



City of Winter Park



Park Avenue Refresh

A Comprehensive Outlook

Prepared By Stringfellow Planning & Design

City Commission Presentation April 23, 2025

Lighting Approval

Receive approval for the proposed Park Avenue Streetlight Design & Purchase



Project Update

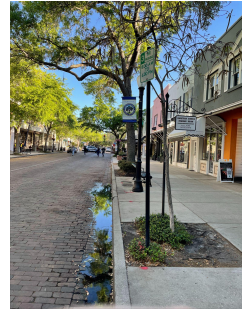
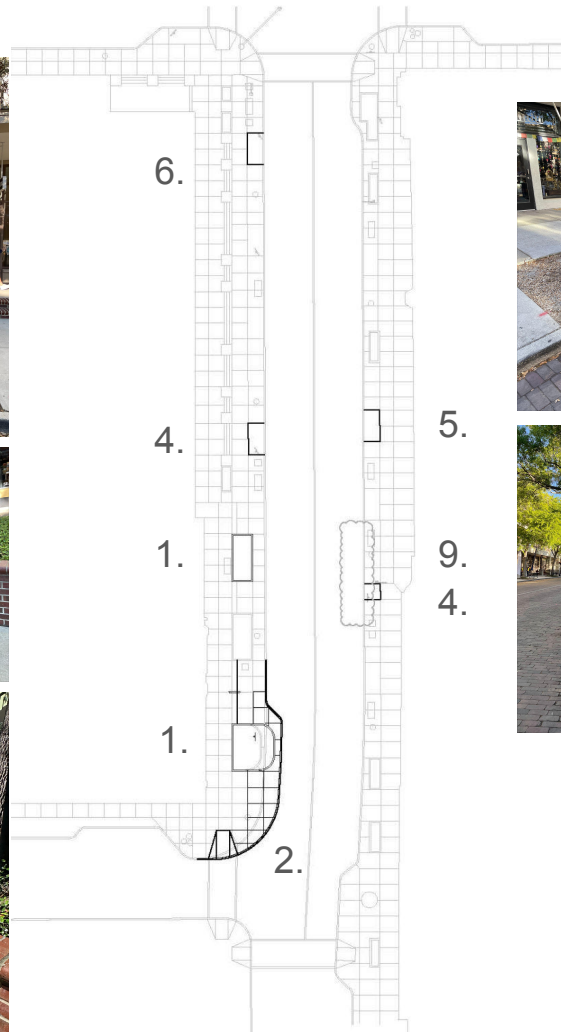
Ongoing Efforts

1. Survey Complete on April 11th
2. Phase 1 Budget Schematic
3. Installation of Gateways expected to begin the week of May 26th with dedication
4. Mobility Hub approved on April 9th with launch expected with Gateways in June
5. Light Design Complete
6. Contractor and Consultant Site Walk

Phase 1 - Garfield to Canton

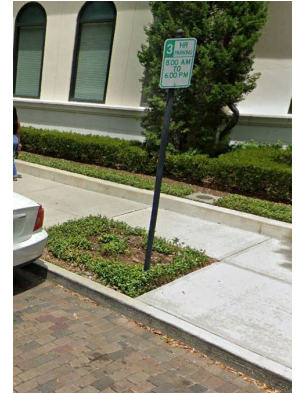
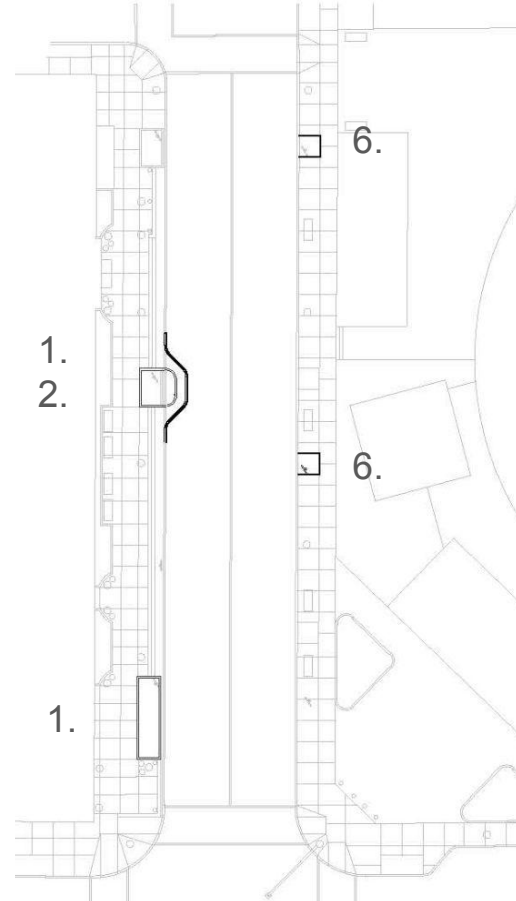
Garfield - Canton

1. Replace/Repair two damaged raised planter bed N of Garfield.
2. Bulb out/curb extension into Park Ave from Garfield. Install Bollards for safety.
3. New Electrical, Low Voltage, Irrigation.
4. Remove Crepe/Palm Tree/Elm and replace with Live Oaks.
5. New Oak Trees have root barriers, tree grate properly installed, irrigation and coordinate with light locations.
6. Air Spade tree planters, add quality soil and plant 3-4 inch groundcover with irrigation.
7. Replacement of trash cans, pots, etc
8. Updated light poles and accessories.
9. Assess on street drainage issues.



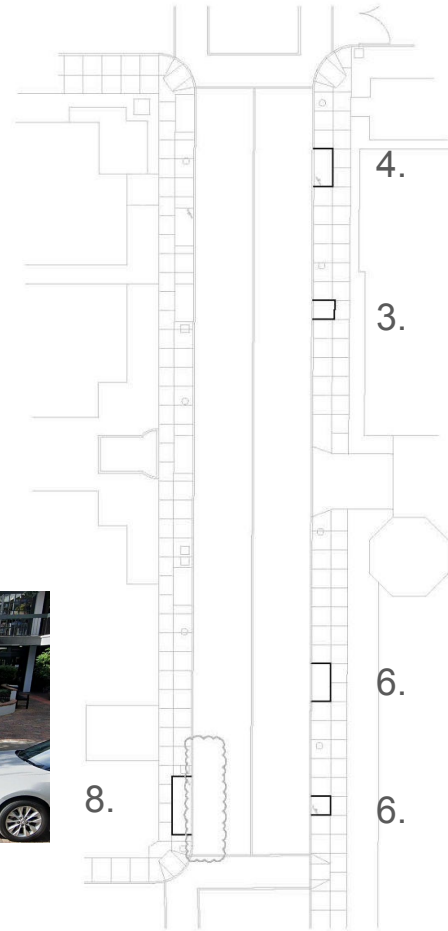
Phase 1 - Canton to Cole

1. Replace/Repair two damaged raised planter beds.
2. Bulb out into Park Ave at mid block to protect vehicles and raised brick planter.
3. New Electrical, Low Voltage, Irrigation.
4. Updated light poles and accessories.
5. Remove non-shade trees.
6. Patch/replace concrete where designated.
7. New Live Oak Trees with root barriers, tree grate properly installed, irrigation and coordinated with light locations.
8. Air Spade tree planters, add quality soil and plant 3-4 inch ground cover plants with irrigation.
9. Replacement of trash cans, pots, etc
10. Eliminate non-required signage.



Phase 1 - Cole to Swoope

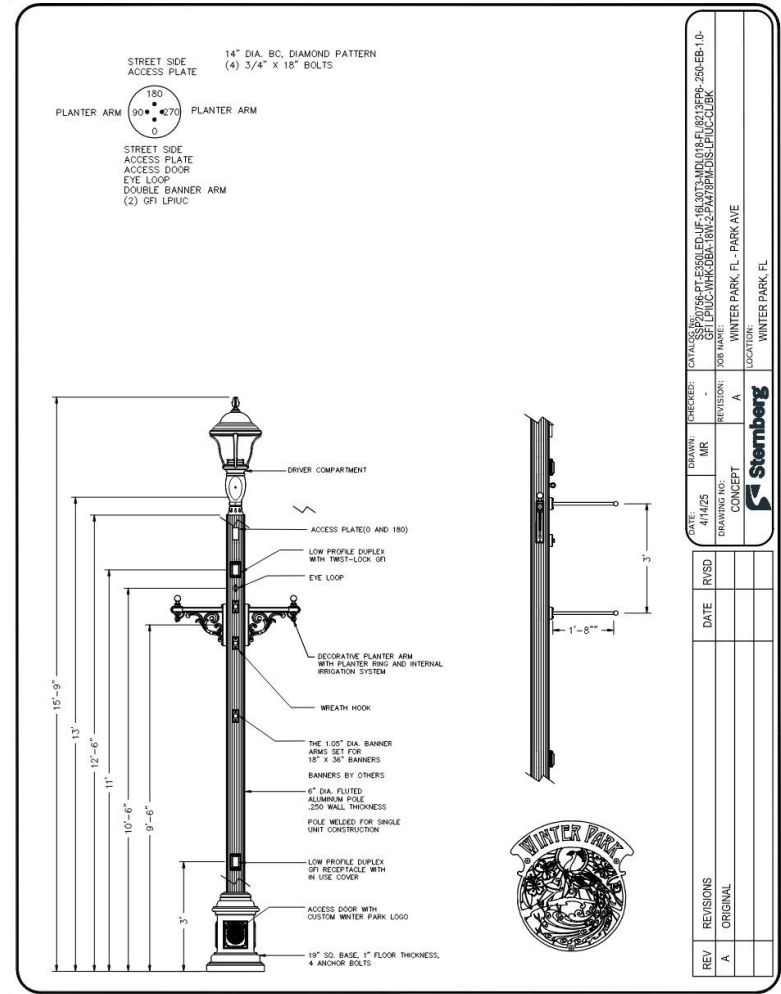
1. New Electrical, Low Voltage, Irrigation.
2. Updated light poles and accessories.
3. Remove non-shade trees.
4. New Live Oak Trees with root barriers, tree grate properly installed, irrigation and coordinated with light locations.
5. Air Spade tree planters, add quality soil and plant 3-4 inch ground cover plants with irrigation.
6. Patch/replace concrete where designated.
7. Replacement of trash cans, pots, etc.
8. Eliminate non-required signage.
9. Assess on street drainage issues.



Lighting Approval

Lighting/Technology

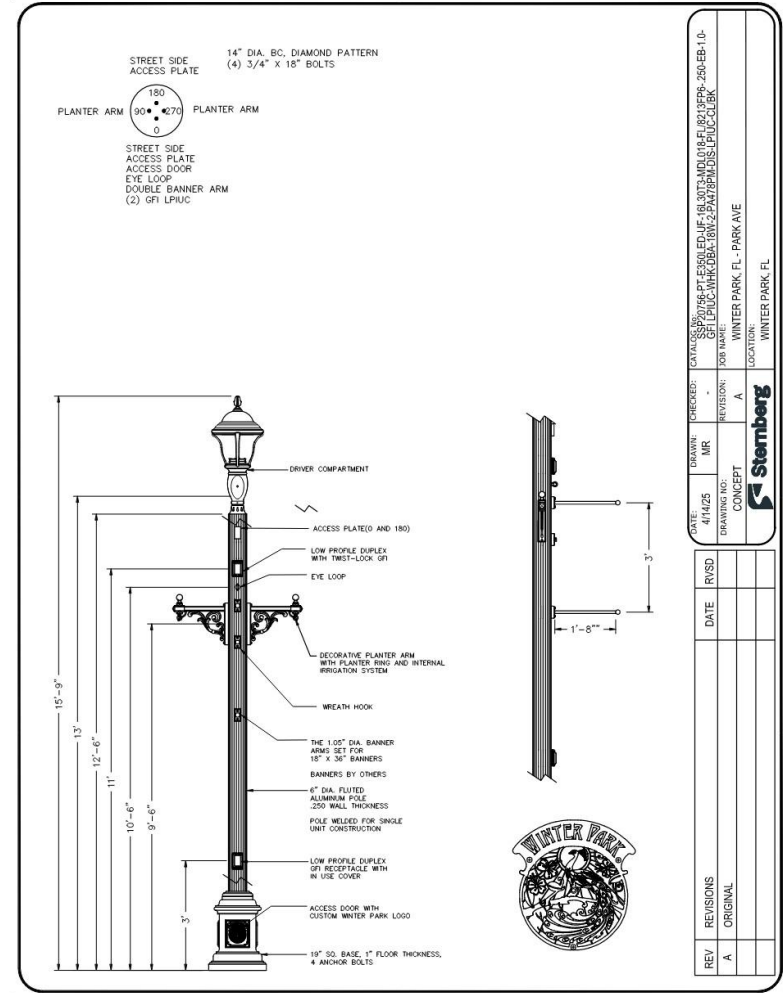
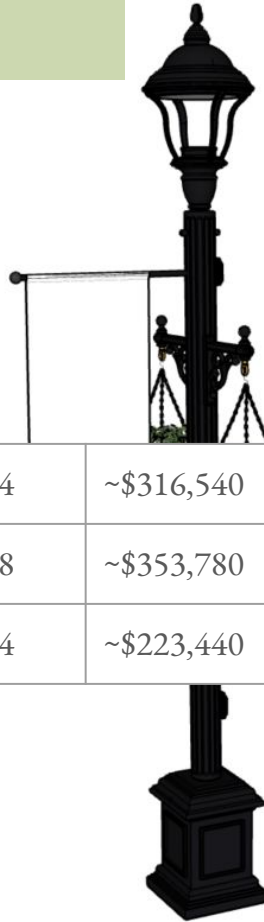
1. Dark Sky Compliant
2. Timers & Photocells
3. Speakers & Outlets Top/Bottom
4. Irrigation for Hanging Plants
5. Wifi Equipment Compatible
6. Cameras in Key Locations
7. Smart City Capable
8. Branded for Winter Park



Lighting Approval

Unit Cost	Quantity	Total
\$9,310.00	~100	\$931,000.00

Phase 1	Webster to Canton	~34	~\$316,540
Phase 2	Canton to New England	~38	~\$353,780
Phase 3	New England to Fairbanks	~24	~\$223,440



Request

Approval of Sternberg streetlight design and purchase plan, as presented.



STRINGFELLOW
PLANNING & DESIGN