



# City of Winter Park



## Park Avenue Refresh

A Comprehensive Outlook

Prepared By Stringfellow Planning & Design



STRINGFELLOW  
PLANNING & DESIGN



# Project Intent

Refreshing Park Avenue's landscape, hardscape and lighting for consistency.



# Outline

1. General Project Updates
2. Design Intent
3. Updated Timeline



# What We Heard

1. East West Side Streets
2. Phasing (Start on the North)
3. Smart City and Forward Thinking Design



# Project Updates

1. Surveying is underway on the north end
2. Conceptual Pole Design
3. Conceptual Hardscape/Landscape Selections
4. Continuing to build the project team







## Phase 1 - Webster to Garfield

Webster

Whipple

Swoope

Cole

Canton

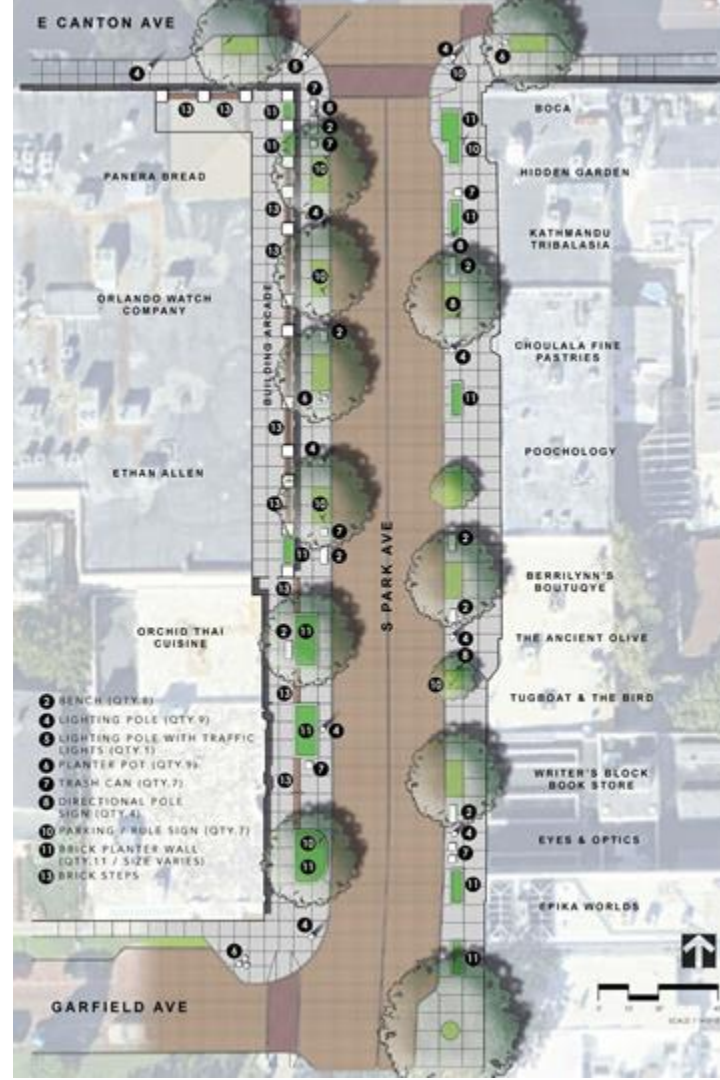
Garfield



## Phase 1 - Garfield to Canton

### Garfield - Canton

1. Replace/Repair two damaged raised planter bed N of Garfield.
2. Bulb out/curb extension into Park Ave from Garfield. Install Bollards for safety.
3. New Electrical, Low Voltage, Irrigation
4. Remove Crepe/Palm Tree/Elm and replace with Live Oaks
5. New Oak Trees have root barriers, tree grate properly installed, irrigation and coordinate with light locations
6. Air Spade tree planters, add quality soil and plant 3-4 inch groundcover with irrigation
7. Replacement of trash cans, pots, etc
8. Updated light poles and accessories



## Phase 1 - Canton to Cole

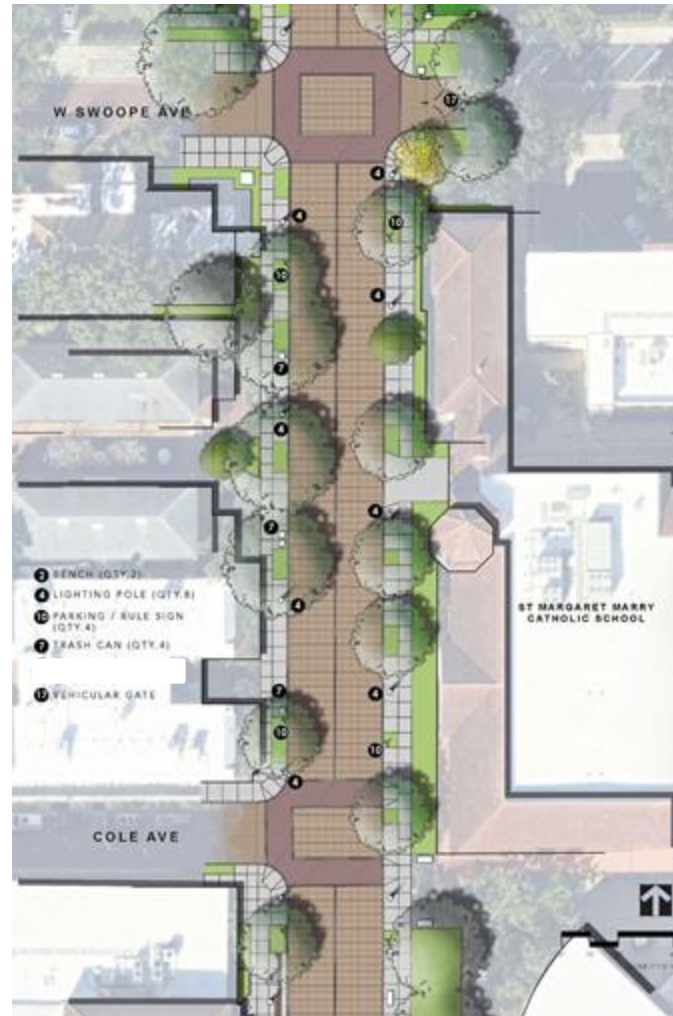
1. New Electrical, Low Voltage, Irrigation
2. Updated light poles and accessories
3. Remove non-shade trees
4. New Live Oak Trees with root barriers, tree grate properly installed, irrigation and coordinated with light locations
5. Air Spade tree planters, add quality soil and plant 3-4 inch ground cover plants with irrigation
6. Replacement of trash cans, pots, etc
7. Eliminate non-required signage.





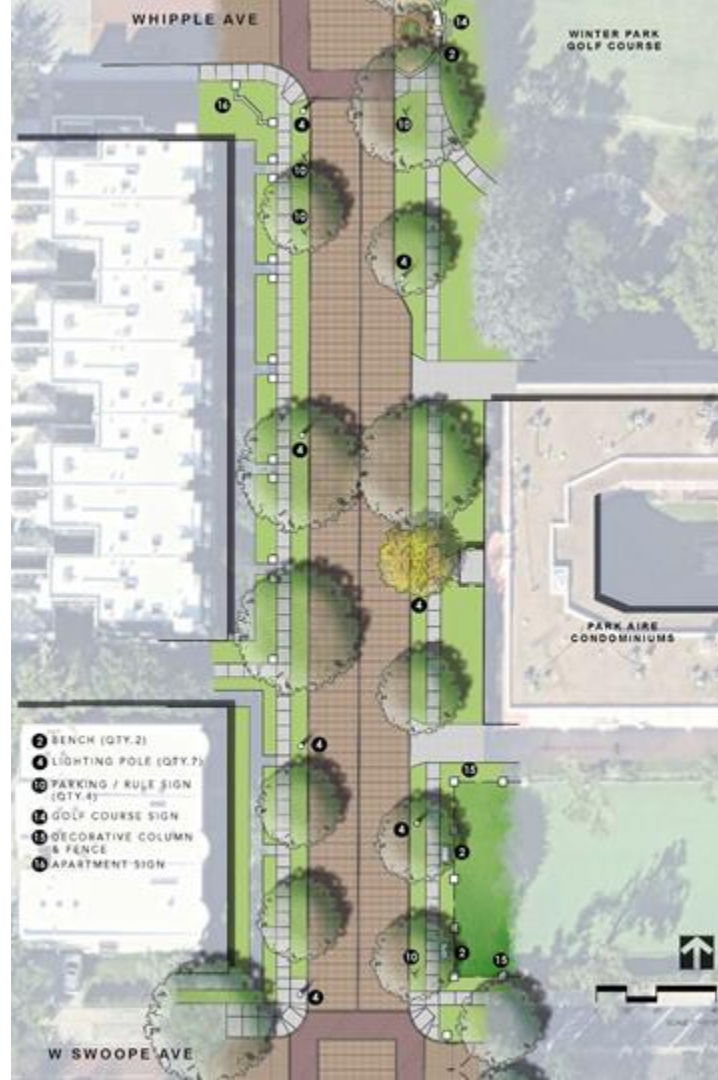
## Phase 1 - Cole to Swoope

1. New Electrical, Low Voltage, Irrigation
2. Updated light poles and accessories
3. Remove non-shade trees
4. New Live Oak Trees with root barriers, tree grate properly installed, irrigation and coordinated with light locations
5. Air Spade tree planters, add quality soil and plant 3-4 inch ground cover plants with irrigation
6. Replacement of trash cans, pots, etc
7. Eliminate non-required signage.



## Phase 1 - Swoope to Whipple

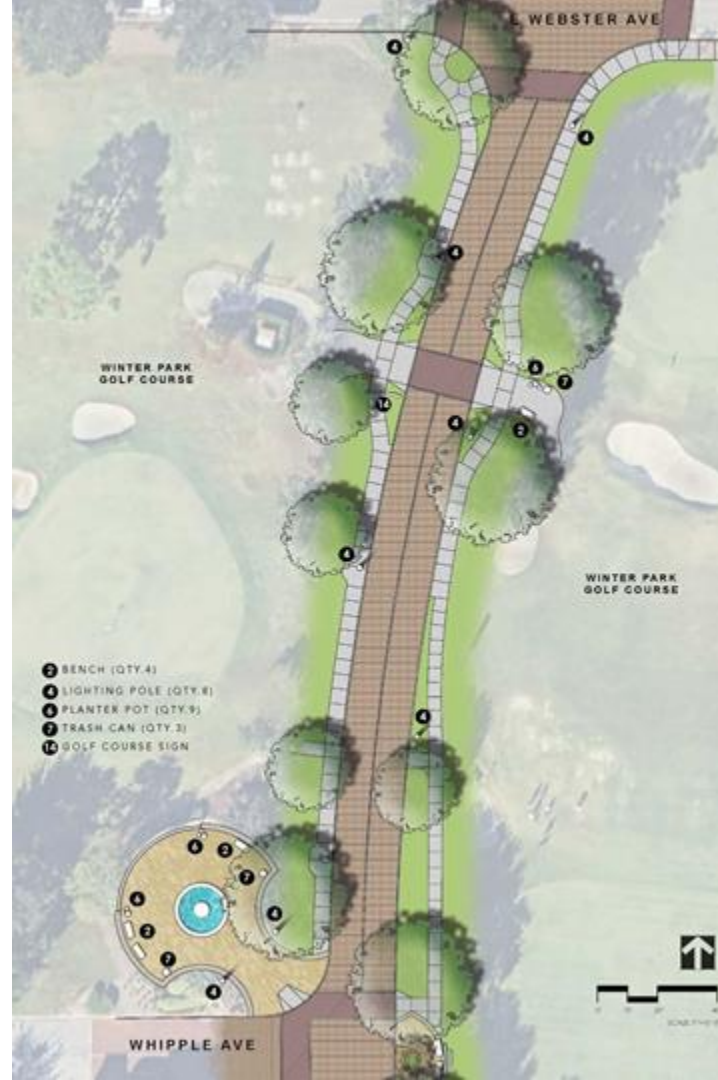
1. New Electrical, Low Voltage, Irrigation
2. Updated light poles and accessories
3. Remove non-shade trees
4. New Live Oak Trees with root barriers, tree grate properly installed, irrigation and coordinated with light locations
5. Air Spade tree planters, add quality soil and plant 3-4 inch ground cover plants with irrigation
6. Replacement of trash cans, pots, etc
7. Eliminate non-required signage.





## Phase 1 - Whipple to Webster

1. Gateway Signage
2. New Electrical, Low Voltage, Irrigation
3. Updated light poles and accessories
4. New Live Oak Trees with root barriers, tree grate properly installed, irrigation and coordinated with light locations
5. Air Spade tree planters, add quality soil and plant 3-4 inch ground cover plants with irrigation
6. Replacement of trash cans, pots, etc
7. Eliminate non-required signage.



## PARK AVENUE REFRESH

02.17.25



PARK AVENUE DESIGN INTENT



---

DARK SKY LIGHT WITH DECORATIVE FINIAL

---

TWO (2) SMART DEVICES & GFI OUTLET

---

BANNER ARM OR WREATH CONNECTION

DOUBLE HANGING PLANTERS

INTEGRATED SMART HUB

---

GFI OUTLET AT BASE

DECORATIVE PEDESTAL

---







Earth Tone Planters

Stone Walls and Planters

Stone Fountains



Stone Vase Urns

Planters - Vases

Porcelain Benches



Iron Benches - Vase Benches

Porcelain Fountains and Sinks

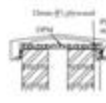
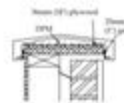
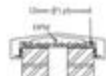
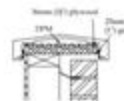
Iron Rail

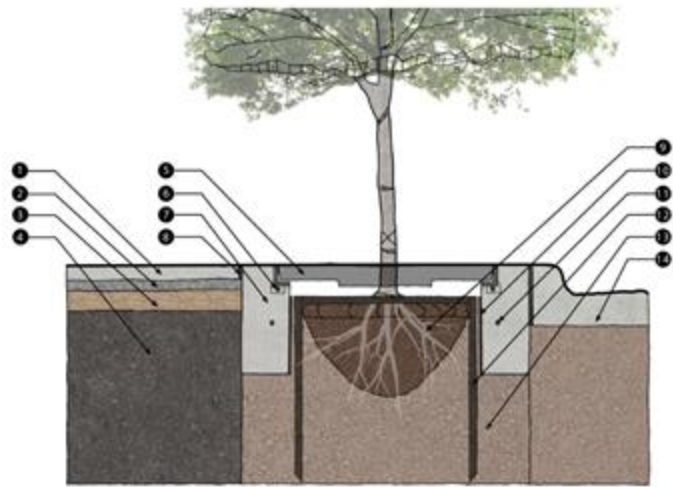


Dark Sky Lighting

Benches - Laminated Forms

Earth Tone Pots and Lids





**LEGEND:**

- |                                       |   |
|---------------------------------------|---|
| 1 CONCRETE WALK                       | 11 EXP. JOINT MATERIAL ALL AROUND                             |
| 2 COMPACTED GRASS                     | 12 TREE ROOT BALL 31 DIA. TOP OF ROOT BALL TO BOTTOM OF CONT. |
| 3 COMPACTED DORNGRASS                 | 13 ROOT BARRIER (SEE SPECIFICATION)                           |
| 4 STRUCTURAL SOIL (SEE SPECIFICATION) | 14 #2 REBAR CONT. - THY UNDERHUNG-TREE STAIRING               |
| 5 TREE GRAFT (STYLE TREE)             | 15 PLANTING SOIL  |
| 6 TREE GRAFT FRAME & ANCHORS          | 16 1/4" COB & GUTTER / STREET PAVING                          |
| 7 CIP CONCRETE TREE                   |   |
| 8 GRADE COLLAR                        |   |

NOTE: ALL NEWLY PLANTED TREES TO HAVE (1) FLOOD BUBBLERS PER TREE

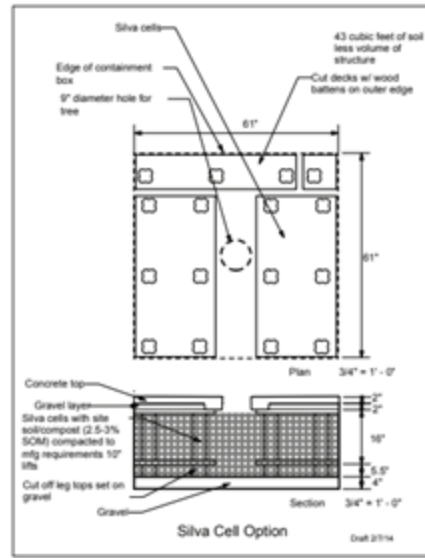


Figure 3. Installation plan drawing for Silva Cells™.

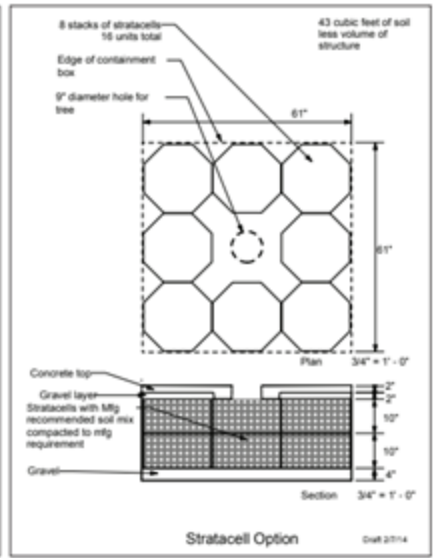


Figure 4. Installation plan drawing for Stratacells™.



### CHRISTMAS (LATE NOVEMBER TO MID-JANUARY)

Primary Option:

Poinsettia – Iconic for dramatic holiday color.

Additional Suggestions:

Cyclamen – Shade-tolerant, vibrant reds, whites, and pinks.

Candy Cane Sorrel - Best in protected areas

Burkii Cedar - Where large spaces allow for a "christmas tree" appearance



### WINTER/SPRING FULL SEASON (MID-JANUARY TO MID-MAY)

Plants that last the entire season:

White Vinca – Sun-tolerant, durable.

Yellow Petunia – Sun-tolerant, bold blooms for vibrant displays.

Purple Angelonia - Sun-tolerant, drought tolerant

Additional Suggestions:

Snapdragon – Full sun, cold-tolerant, vertical color.

Dusty Miller – Full sun, silver foliage for texture.



### MID-CYCLE SWAPS (EARLY APRIL - MAY)

Swap Out:

Geraniums and Dianthus.

Replacement Options:

Impatiens – Shade-tolerant, consistent blooms in a variety of colors.

Verbena – Full sun, spreading habit with colorful blooms.



### SUMMER/FALL (MID-MAY TO LATE NOVEMBER)

Last Entire Cycle:

Lantana – Heat-tolerant, full sun, vibrant clusters of blooms.

New Guinea Impatiens – Partial shade, striking flowers.

Pentas – Full sun, butterfly-friendly, vibrant colors.



### MID-CYCLE SWAPS (EARLY OCTOBER)

Marigolds, Coleus, Begonias

Additional Suggestions:

Salvia – Full sun, vertical spikes of dramatic color.

Torenia – Shade-tolerant, colorful snapdragon-like blooms.



# PUBLIC HEARING TIMELINE

		2025									
STATUS	TASK	JAN	FEB	MAR	APR	MAY	JUN	JUL	AUG	SEPT	OCT
Ongoing	Design & Coordination	[Ongoing from Jan to Oct]									
Complete	Com. Work Session	1/23									
Complete	Commission Meeting		2/26								
Complete	Light Pole Approval				4/23						
Complete	Final Budget for Phase 1								8/20		



