



City of Winter Park



Park Avenue Refresh

A Comprehensive Outlook

Prepared By Stringfellow Planning & Design

Overview

Refreshing Park Avenue's landscape, hardscape and lighting for consistency.





Phase 1 - Webster to Garfield

Webster

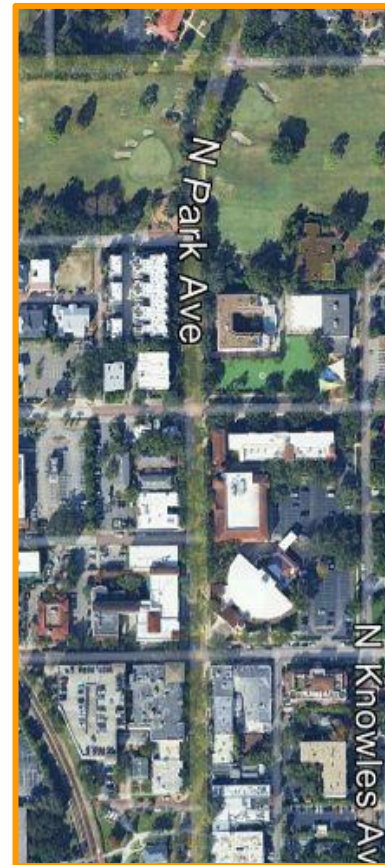
Whipple

Swoope

Cole

Canton

Garfield





Earth Tone Protective Planters



Seat Walls and Planters



Water Fountain - Klynchudson



Iron Tree Grate - Ironsawtooths



Planters - Vestre



Hanging Baskets



Iron Bench - Victor Stanley



Precast Caps and Trim



Bike Rack - Klynchudson



Dark Sky Lighting



Receptacle - Landscape Forms



Earth Tone Pots and Urns



DARK SKY LIGHT WITH DECORATIVE FINIAL

TWO (2) SMART DEVICES & GFI OUTLET

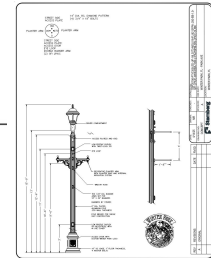
BANNER ARM OR WREATH CONNECTION

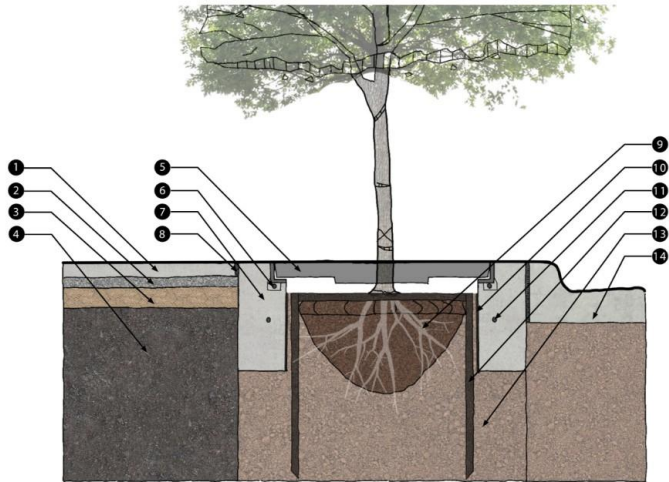
DOUBLE HANGING PLANTERS

INTEGRATED SMART HUB

GFI OUTLET AT BASE

DECORATIVE PEDESTAL

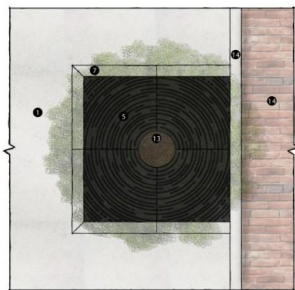




LEGEND:

- | | |
|---------------------------------------|--|
| 1 CONCRETE WALK | 5 EXP. JOINT MATERIAL ALL AROUND |
| 2 COMPACTED BASE | 6 TREE ROOT BALL 2" MIN. TOP OF ROOT BALL TO BOTTOM OF GRATE |
| 3 COMPACTED SUBGRADE | 7 ROOT BARRIER (SEE SPECIFICATION) |
| 4 STRUCTURAL SOIL (SEE SPECIFICATION) | 8 #3 REBAR CONT. - TYP UNDERGROUND TREE STAKING |
| 5 TREE GRATE (STYLE TBD) | 9 PLANTING SOIL |
| 6 TREE GRATE FRAME & ANCHORS | 10 TYP. CURB & GUTTER / STREET PAVING |
| 7 CIP CONCRETE TREE GRATE COLLAR | |

NOTE: ALL NEWLY PLANTED TREES TO HAVE (2) FLOOD BUBBLERS PER TREE



MID-CYCLE SWAPS (EARLY APRIL - MAY)

Swap Out:

Geraniums and Dianthus.

Replacement Options:

Impatiens – Shade-tolerant, consistent blooms in a variety of colors.

Verbena – Full sun, spreading habit with colorful blooms.



SUMMER/FALL (MID-MAY TO LATE NOVEMBER)

Last Entire Cycle:

Lantana – Heat-tolerant, full sun, vibrant clusters of blooms.

New Guinea Impatiens – Partial shade, striking flowers.

Pentas – Full sun, butterfly-friendly, vibrant colors.



MID-CYCLE SWAPS (EARLY OCTOBER)

Marigolds, Coleus, Begonias

Additional Suggestions:

Salvia – Full sun, vertical spikes of dramatic color.

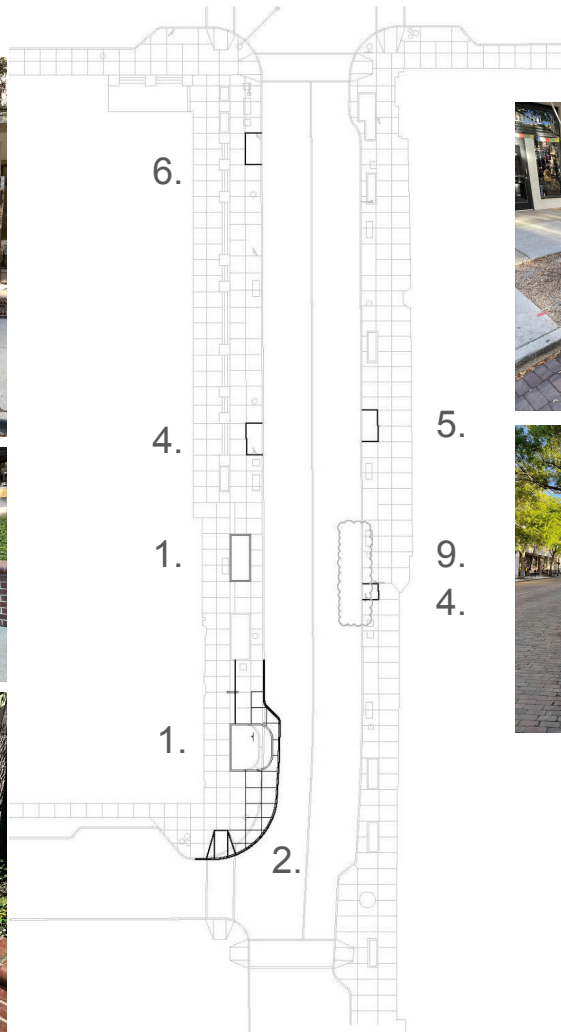
Torenia – Shade-tolerant, colorful snapdragon-like blooms.



Phase 1 - Garfield to Canton

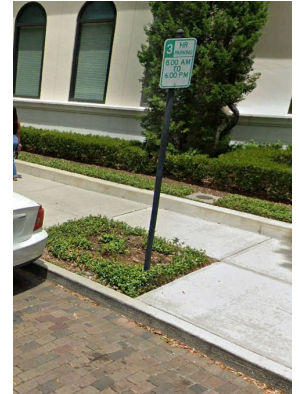
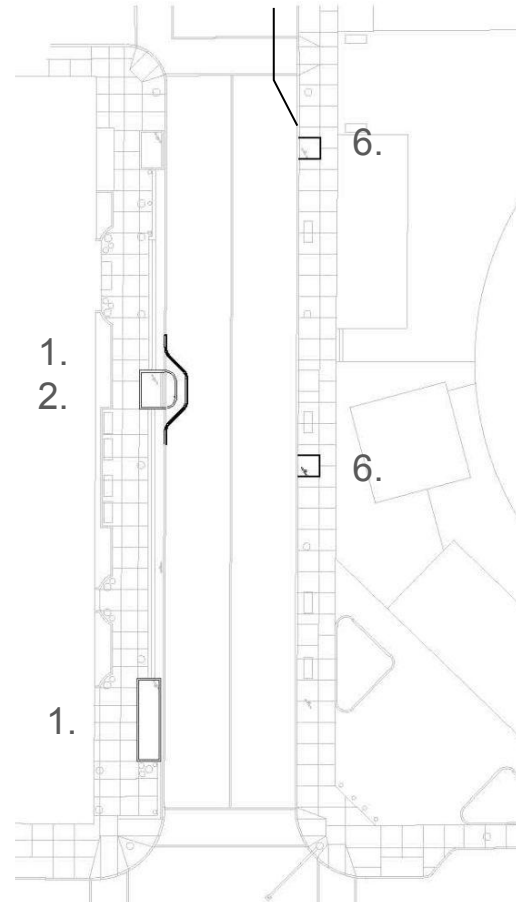
Garfield - Canton

1. Replace/Repair two damaged raised planter bed N of Garfield.
2. Bulb out/curb extension into Park Ave from Garfield. Install Bollards for safety.
3. New Electrical, Low Voltage, Irrigation.
4. Remove Crepe/Palm Tree/Elm and replace with Live Oaks.
5. New Oak Trees have root barriers, tree grate properly installed, irrigation and coordinate with light locations.
6. Air Spade tree planters, add quality soil and plant 3-4 inch groundcover with irrigation.
7. Replacement of trash cans, pots, etc
8. Updated light poles and accessories.
9. Assess on street drainage issues.



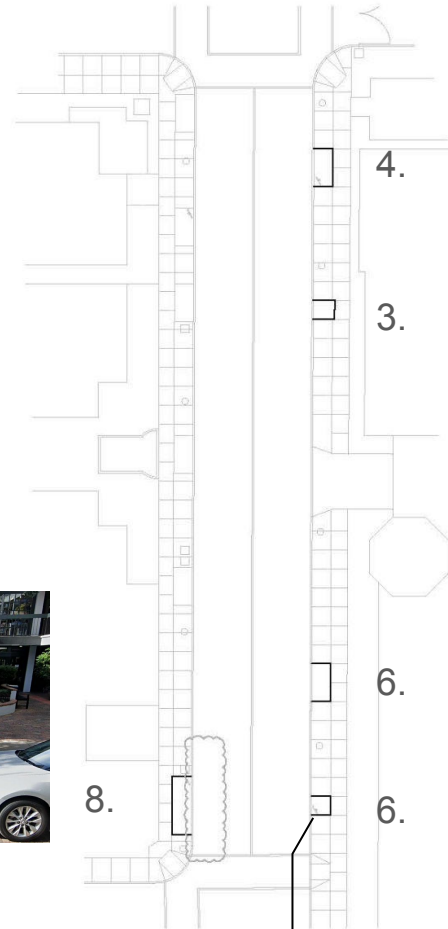
Phase 1 - Canton to Cole

1. Replace/Repair two damaged raised planter beds.
2. Bulb out into Park Ave at mid block to protect vehicles and raised brick planter.
3. New Electrical, Low Voltage, Irrigation.
4. Updated light poles and accessories.
5. Remove non-shade trees.
6. Patch/replace concrete where designated.
7. New Live Oak Trees with root barriers, tree grate properly installed, irrigation and coordinated with light locations.
8. Air Spade tree planters, add quality soil and plant 3-4 inch ground cover plants with irrigation.
9. Replacement of trash cans, pots, etc
10. Eliminate non-required signage.



Phase 1 - Cole to Swoope

1. New Electrical, Low Voltage, Irrigation.
2. Updated light poles and accessories.
3. Remove non-shade trees.
4. New Live Oak Trees with root barriers, tree grate properly installed, irrigation and coordinated with light locations.
5. Air Spade tree planters, add quality soil and plant 3-4 inch ground cover plants with irrigation.
6. Patch/replace concrete where designated.
7. Replacement of trash cans, pots, etc.
8. Eliminate non-required signage.
9. Assess on street drainage issues.



Project Update

Ongoing Efforts

1. Phase 1 Construction Documents underway
2. Installation of Gateways expected to begin the week of May 26th with dedication
3. Mobility Hub approved in April with launch expected this summer
4. Light Design Approved



City of Winter Park



Park Avenue Refresh

A Comprehensive Outlook

Prepared By Stringfellow Planning & Design