



City of Winter Park

Park Avenue Refresh

A Comprehensive Outlook

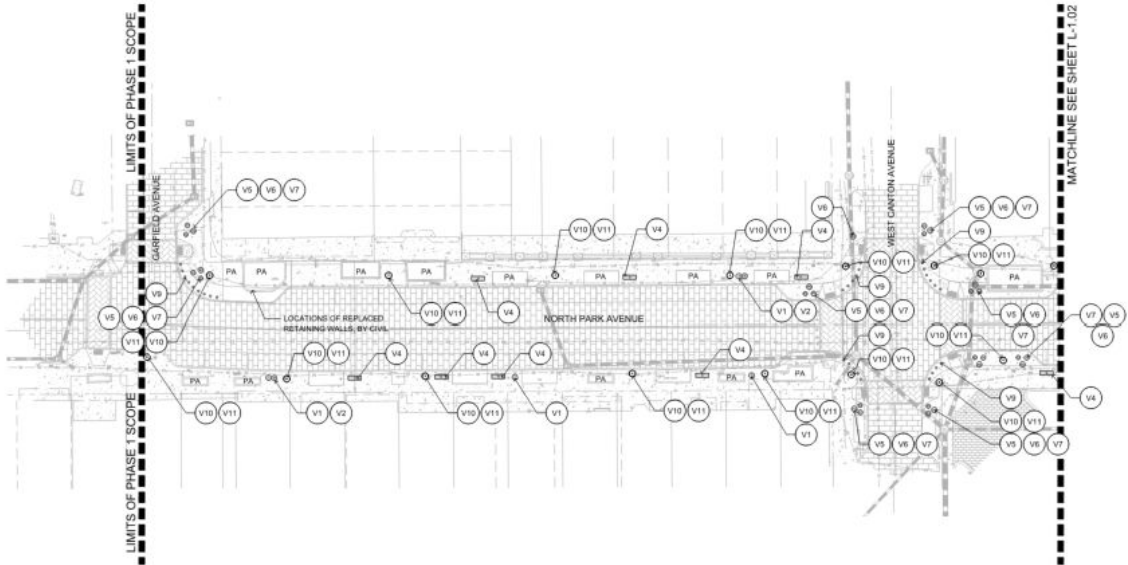
Prepared By Stringfellow Planning & Design

Project Updates

1. 80% Construction Plans Completed for:
 - Civil Engineering
 - Electrical Engineering
 - Landscape Architecture
 - Irrigation
2. January Construction Start
3. Coordination underway with Ovation and all subcontractors
4. Light Pole samples under evaluation
5. Planter Pots in Shop Drawing phase



Landscape & Irrigation



SHEET LEGEND:

- (P1) MEDIUM POT
- (P2) LARGE POT
- (P3) SMALL POT
- (T) TRASH RECEPTACLE
- (R) RECYCLE RECEPTACLE
- (L) LIGHT FIXTURE
- (B) BENCH
- (O) BOLLARD

FOR ALL PLANTER POT SIZES AND COLOR SEE MATERIAL SCHEDULE ON SHEET L-1.10



STRINGFELLOW
Planning & Design
www.stringfellowplanning.com
info@stringfellowplanning.com
P. 321.217.9780

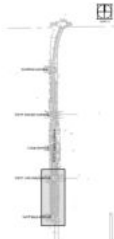
PARK AVENUE REFRESH PHASE 1

Winter Park, Florida
SEA

DANIEL A. ROGERS, P.L.A.
FLORIDA LICENSE #46888620

DATE: 06/07/2025

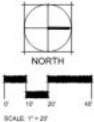
KEY PLAN:



REV.	DATE	DESCRIPTION

HARDSCAPE PLAN

Sheet Title	
JOB NO.	2024.036
SCALE:	AS SHOWN
DATE:	06/07/2025
DESIGN:	BRW
DRAWN:	BRW
CHECKED:	DRP



D
DANIEL
ROGERS

PRICING DOCUMENTS
NOT FOR CONSTRUCTION

L-1.01

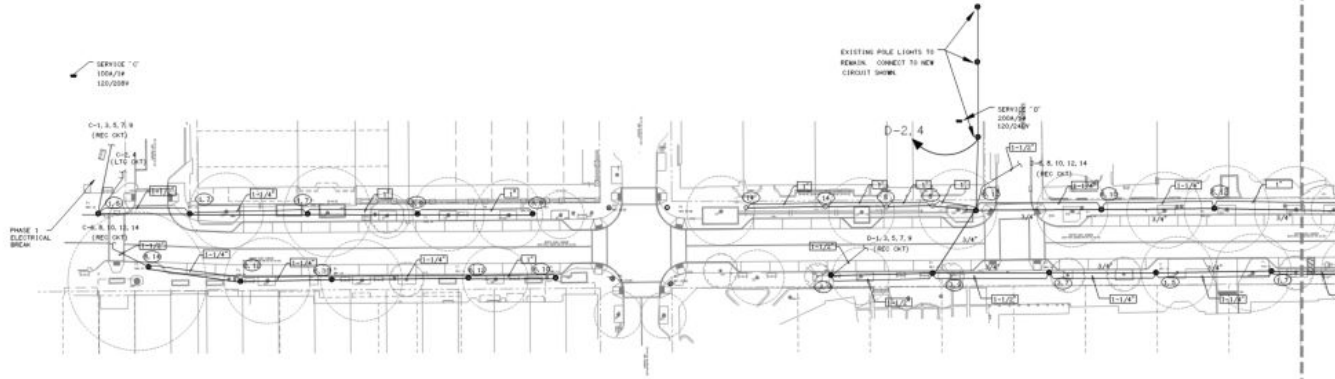
Electrical

PLAN NOTES

1. POLE LIGHTING CIRCUITRY AND RECEPTACLE CIRCUITRY TO BE ROUNDED IN SEPARATE CONDUITS.
2. ALL POLE LIGHTING CIRCUITS IN 3/4" CONDUIT.
3. PROVIDE NECESSARY PULL BOXES AS REQUIRED.

LEGEND

- POLE LIGHT-SEE SCHEDULE SHEET E-1
- (1/2) DENOTES CONDUIT SIZE
- EXISTING SERVICE PANEL-SEE SCHEDULES



PARTIAL ELECTRICAL SITE PLAN

SCALE 1" = 30' 2025.07E



PARK AVENUE REFRESH PARTIAL ELECTRICAL SITE PLAN



PROJECT NO: 25060
 DRAWN BY: M.L.D.
 CHECKED BY: M.L.D.
 APPROVED BY: M.L.D.
 DATE: 07/25/25
 SCALE: 1" = 30' 4D
 FILENAME: 25060-0-SITE

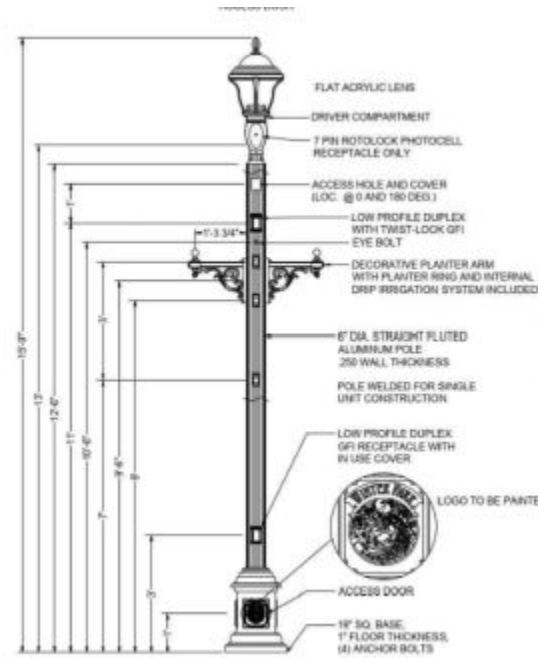
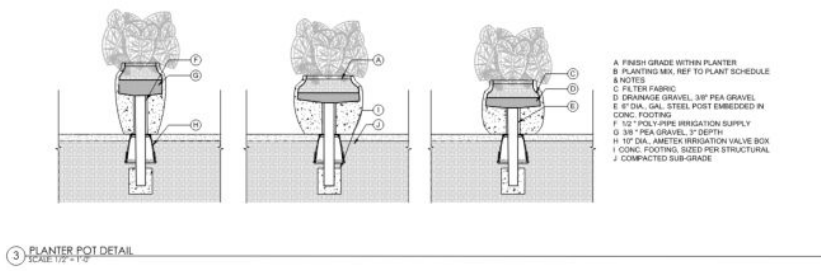
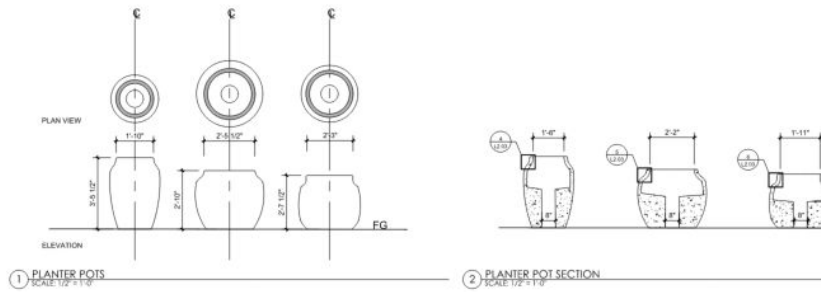
E-4

Filename: C:\Users\jsharpe\Documents\Projects\Park_Avenue_Refresh\25060-0-SITE.dwg Plotted by: jsharpe 7/25/25 11:38



Mechanical
 Electrical
 Plumbing
 Fire Protection





Next Steps

1. Refine Preliminary Bids
2. Complete Coordination
3. Value Engineering as needed
4. Finalize Plans
5. Pre-construction meetings prior to mobilization in January



