



City of Winter Park

Park Avenue Refresh

Phase 2 Design Update

Prepared By Stringfellow Planning & Design

Outline

1. Project Intent
2. Findings
3. Conceptual Plans
4. Draft Timeline



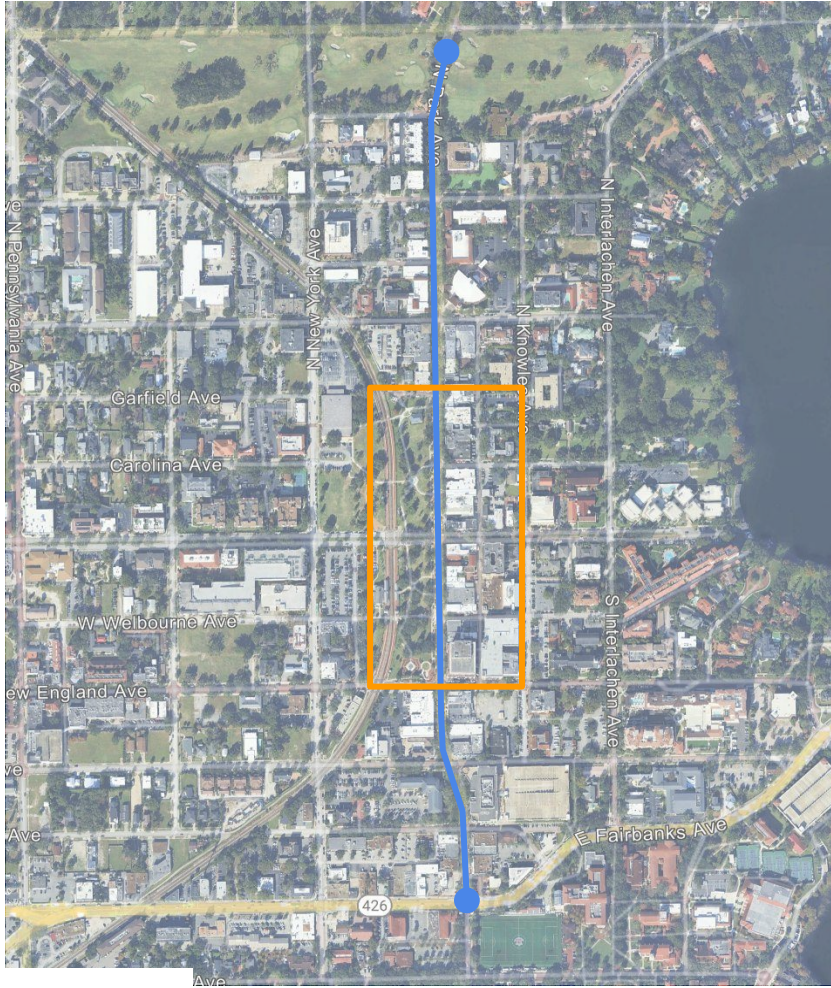
Project Intent

Refreshing Park Avenue's landscape, hardscape and lighting for consistency, enhanced safety, and infrastructure improvements.









Phase 2 - Garfield to New England

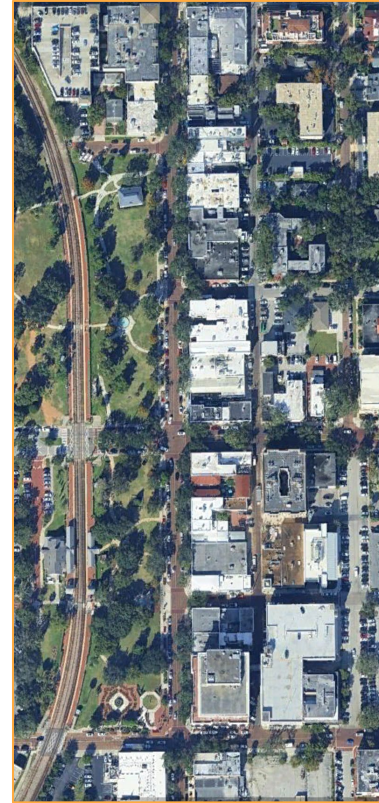
Garfield

Lincoln

Morse

Welbourne

New England







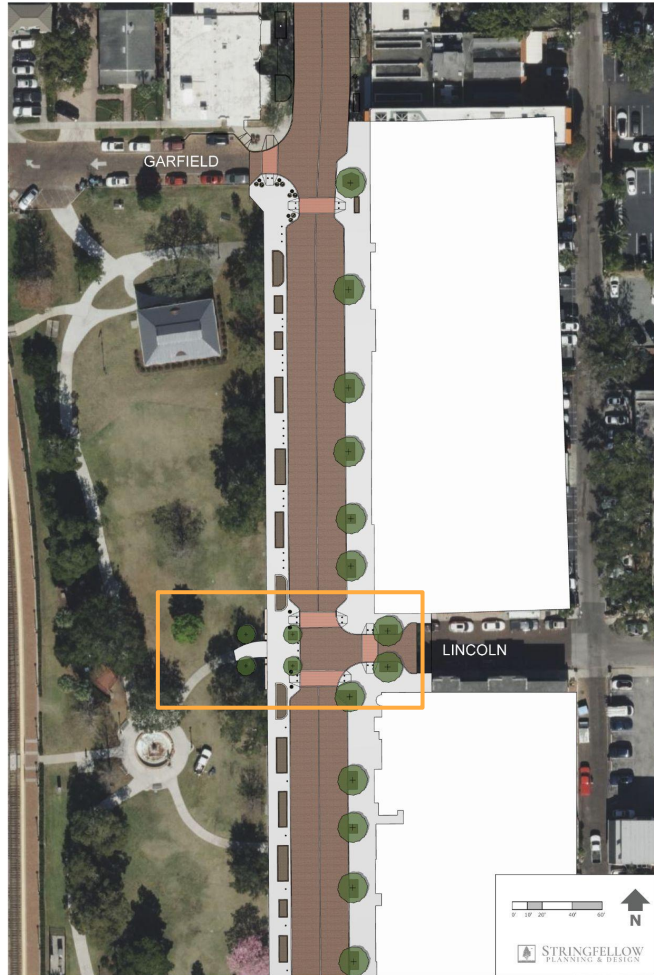
PARK AVE PHASE 2 CONCEPTUALS



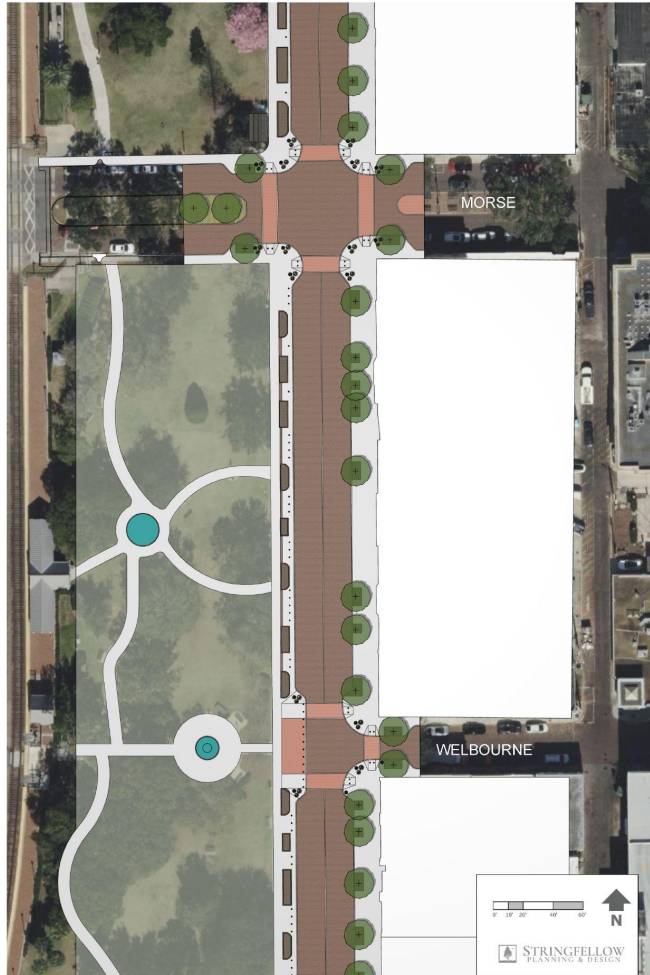
1. 3 Bulb Outs
2. Planter Pots at intersection (approx. 26 pots)
3. Bollards between Raised Planters
4. Wall Caps on existing raised beds
5. Entry Feature at Central Park and Lincoln



PARK AVE PHASE 2 CONCEPTUALS



PARK AVE PHASE 2 CONCEPTUALS



1. 6 Bulb Outs
2. Planter Pots at intersection (approx. 36 pots)
3. Bollards between Raised Planters
4. Wall Caps
5. Bus Stop Building



PARK AVE PHASE 2 CONCEPTUALS



PARK AVE PHASE 2 CONCEPTUALS



1. 2 Bulb Outs
2. Planter Pots at intersection (approx. 12 pots)
3. Bollards between Raised Planters
4. Wall Caps
5. Rose Garden discussion w/ Parks & Recreation Advisory Board



Coordination with Parks & Recreation Advisory Board forthcoming.

1. 11 Bulb Outs (could include south side of New England)
2. Planter Pots at intersection (approx. 70 pots)
3. Bollards between Raised Planters (approx. 130)
4. Wall Caps (approx 30 beds)
5. Handrails (approx 8 handrails)
6. New Trees (mix of Crape and Oak, approx 4)
7. New Light Poles (approx 38)



DRAFT TIMELINE

