

DR. MARTIN LUTHER KING, Jr. PARK

PLAYGROUND UPDATE WORKSHOP

Hosted by the City of Winter Park

August 12, 2025



Ovation
Construction



WHERE WE
STARTED...



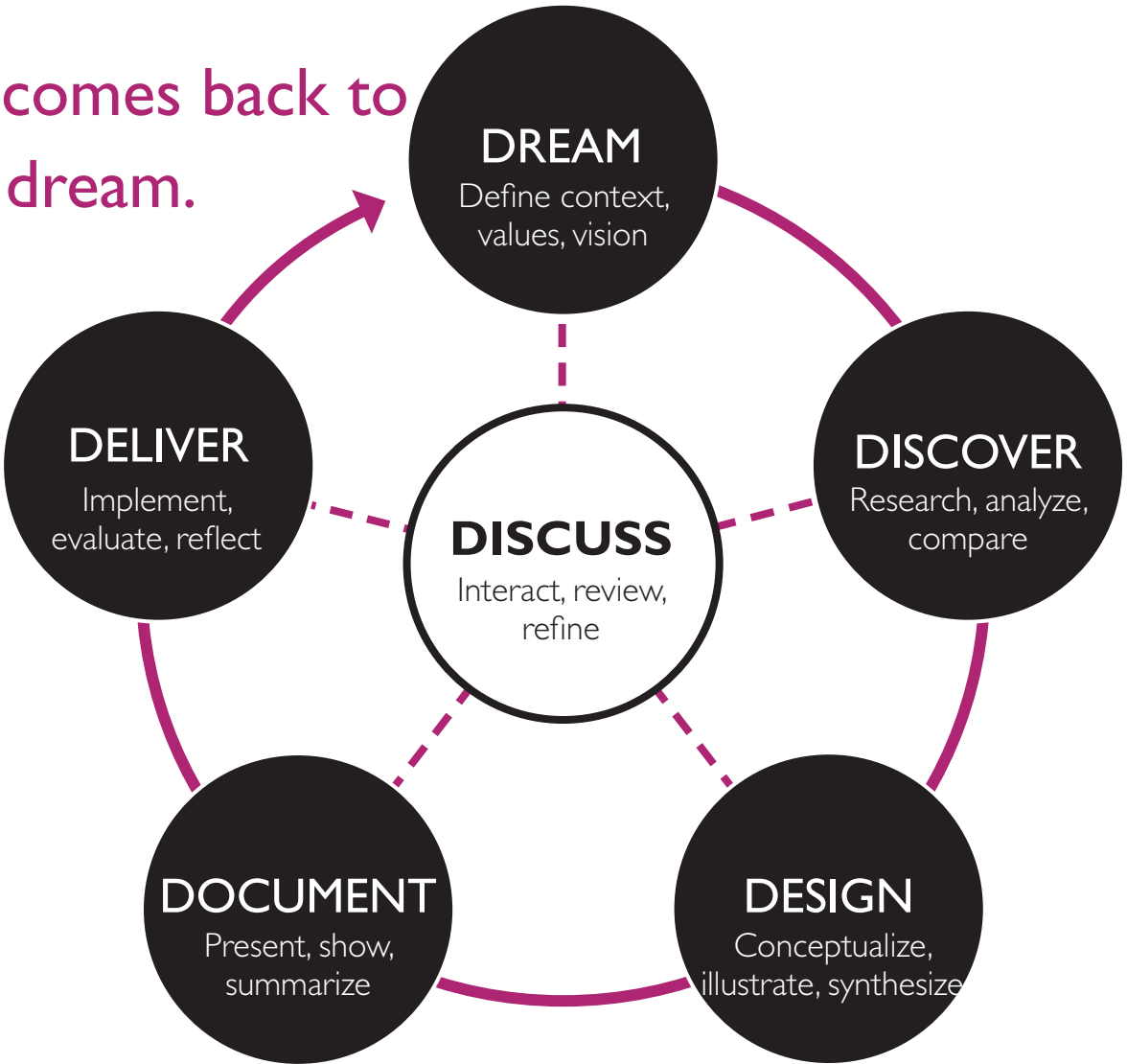
...AND WHERE WE ARE TODAY!

6D PROCESS

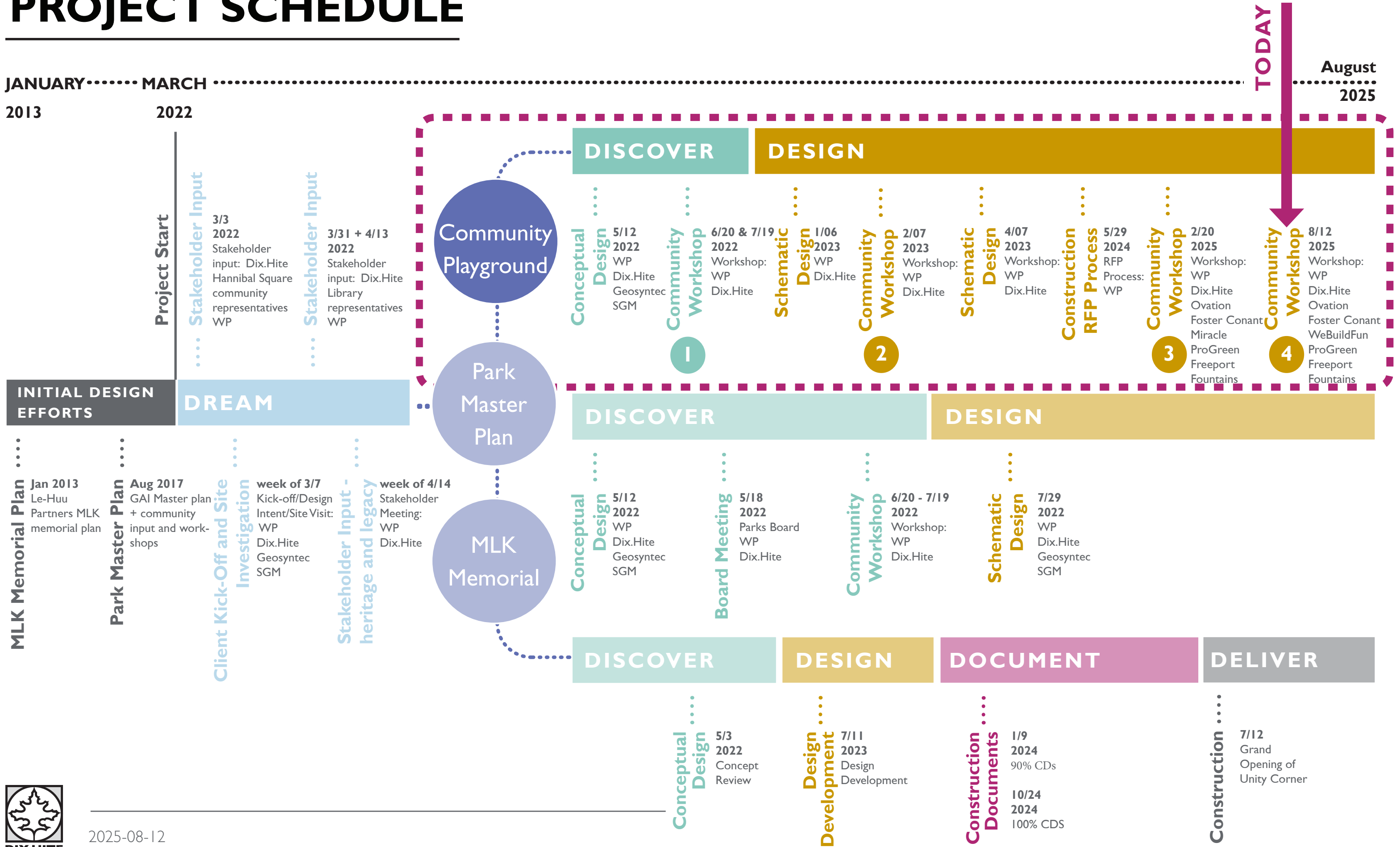
We're true believers in the power of the design process. To help clients meet their goals, we apply the "6D" approach: a transparent and scalable process that engages the entire design team in collectively identifying opportunities and constraints.

These steps provide a framework for project management, ensuring that outcome matches the intent and that the results fulfill the vision. As details of the project are uncovered, we adapt our approach to meet specific goals, deliverables and timeframes.

Everything comes back to the client's dream.



PROJECT SCHEDULE



2025-08-12

MAY 2022
CONCEPTUAL
DESIGN



MAY 2022
PLAYGROUND
EXPLORATION



JULY 2022
FOUNDATION FOR
THE DREAM...



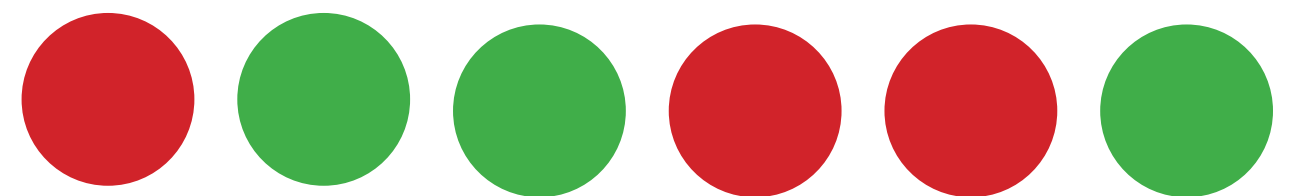
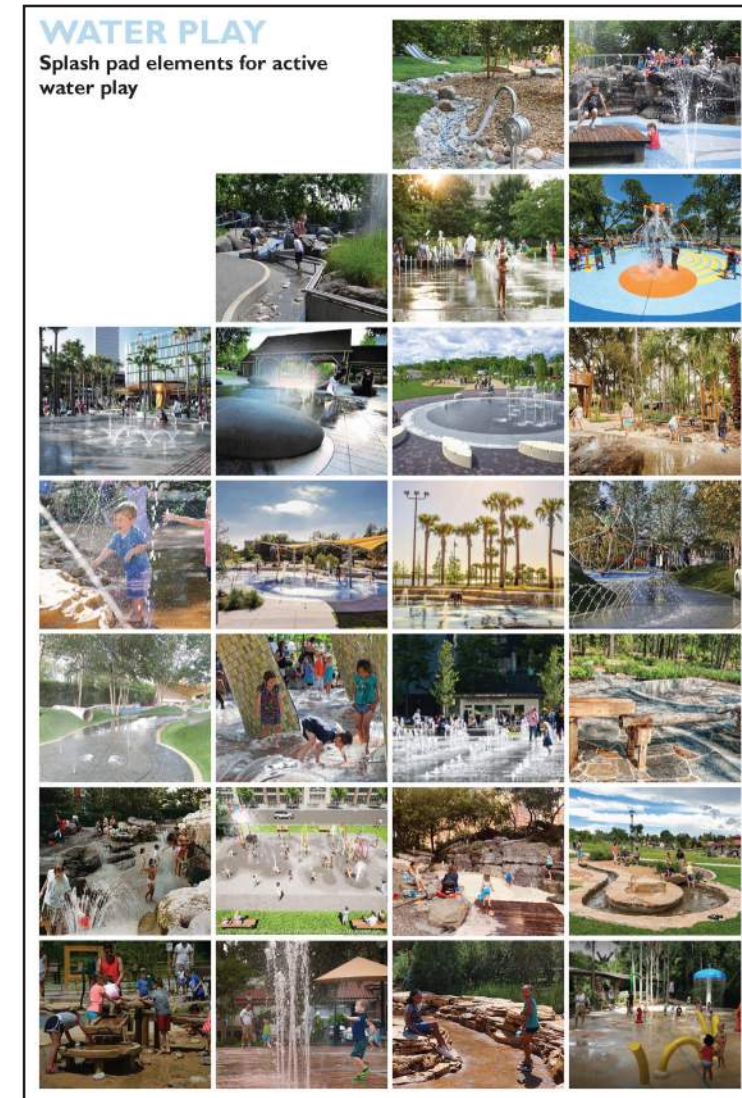
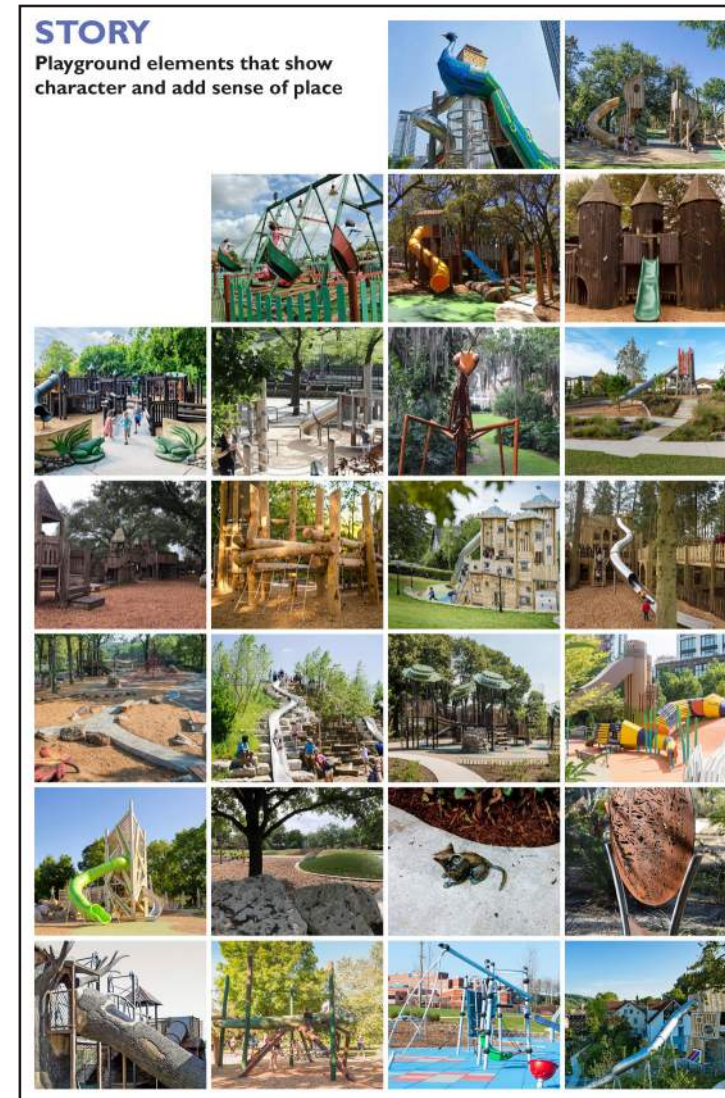
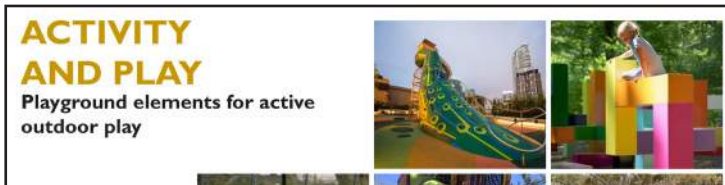
JULY 2022
HAVE FUN !
DREAM BIG !



JULY 2022

RED DOT

GREEN DOT



PLAYGROUND RE-IMAGINED WORKSHOP FEEDBACK

JULY 2022

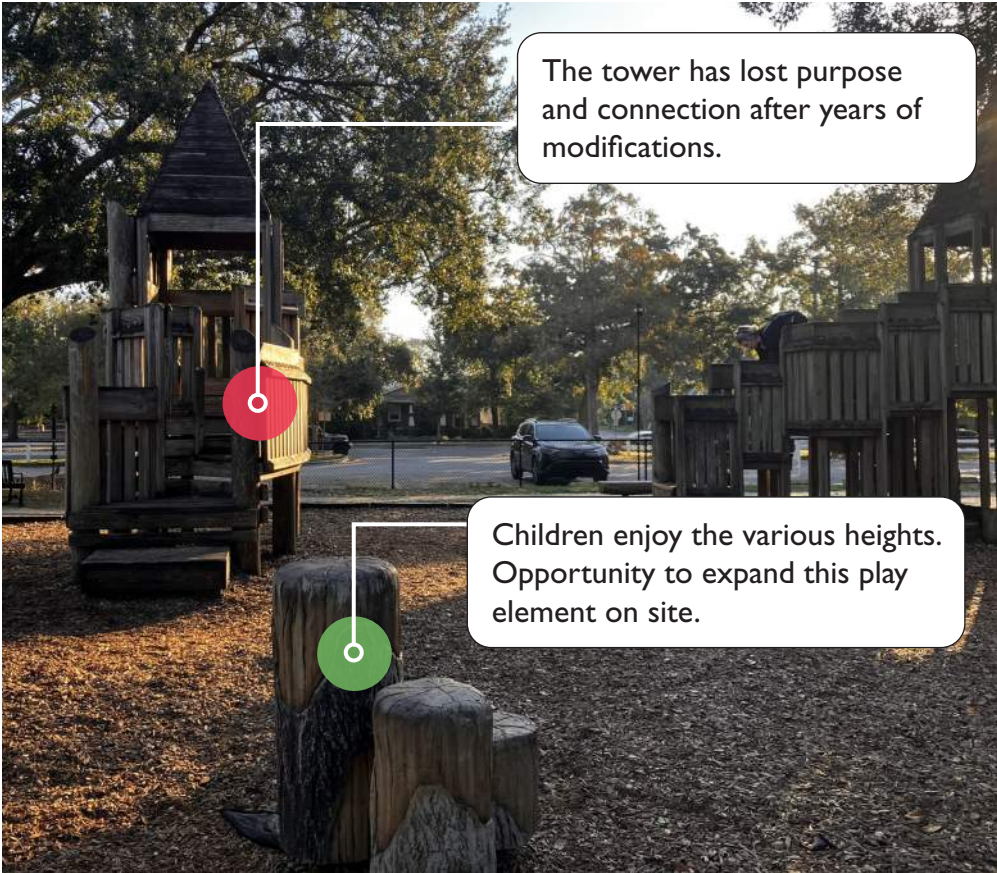
“WHAT WE HEARD”

TOP TAKE AWAYS	PLAY & SPLASH PAD	QUESTIONS & CONCERNS
<ul style="list-style-type: none">• Play:<ul style="list-style-type: none">• Variety of equipment appealing to multiple ages• Naturalistic in material, aesthetic, form• Structure to be low maintenance• Multiple surfaces & textures• Safe• Simple• Splash Pad:<ul style="list-style-type: none">• Incorporate multiple depths• Mimic nature• Inclusive / accessible• Multi-generational• Clear surveillance from multiple seating points• Improve parking lighting• Provide more color & interest among surrounding plant material	<ul style="list-style-type: none">• Include composite material or alternative to wood• Incorporate different materials & surfaces• Keep elements of play connected• Relate to nature & natural elements when possible• Provide ample spaces to foster imagination & creativity• Incorporate more colors• Pay homage to original structure with a modern update• Keep visibility of structures & tunnels clear• Love vertical elements that allow for climbing• Incorporate elements for multiple age groups & levels of play• Provide ample seating around playground for parents• Love rope swing options• Density over spread is key for play structures• Incorporate stepping & weaving motions• Scale play equipment to accommodate popular features• Include multiple bridge access points to castle structure• Improve upon existing castle with additional viewing & clear areas• Include a variety of difficulty levels on castle bridges• Love swinging areas being located away from main castle structure• Provide seating in direct view of playground elements• Include shade over areas of water interaction• Provide variety of water depth levels for varying levels of difficulty• Be sure to include accessible water interaction opportunities• Include safe water interactions for a variety of ages	<ul style="list-style-type: none">• No proposed areas for dogs - should there be?• Dog run & water fountains• Keep existing dog bag stations• Shade options need to be provided for all structures & amenities• Reference other proposed and existing parks in the area for problems• Provide enough trash receptacles to keep the park clean• What type of fencing is used? How opaque should it be?• Are there going to be auto-closing gates?• Should a park attendant be hired to watch over the splash pad?• Summer months would be preferred to have a member on staff• Observation from watchtower building or office• Ensure accessibility coming from the Memorial corner• Incorporate ample lighting around edges of play & parking areas• Questionable visibility with the longer tunnels - shorten?• Is exercise equipment going to be incorporated anywhere?• Integrated on site or nearby?• Are there designated areas for stroller parking? Bike parking?• Is there a way to prevent / discourage people from sleeping in tunnels?• How can sound be incorporated into equipment or plant material?• Can we provide sensory elements along a designated trail?• Can these tie into the trail leading to the library?



FEBRUARY 2023 INVENTORY AND ANALYSIS

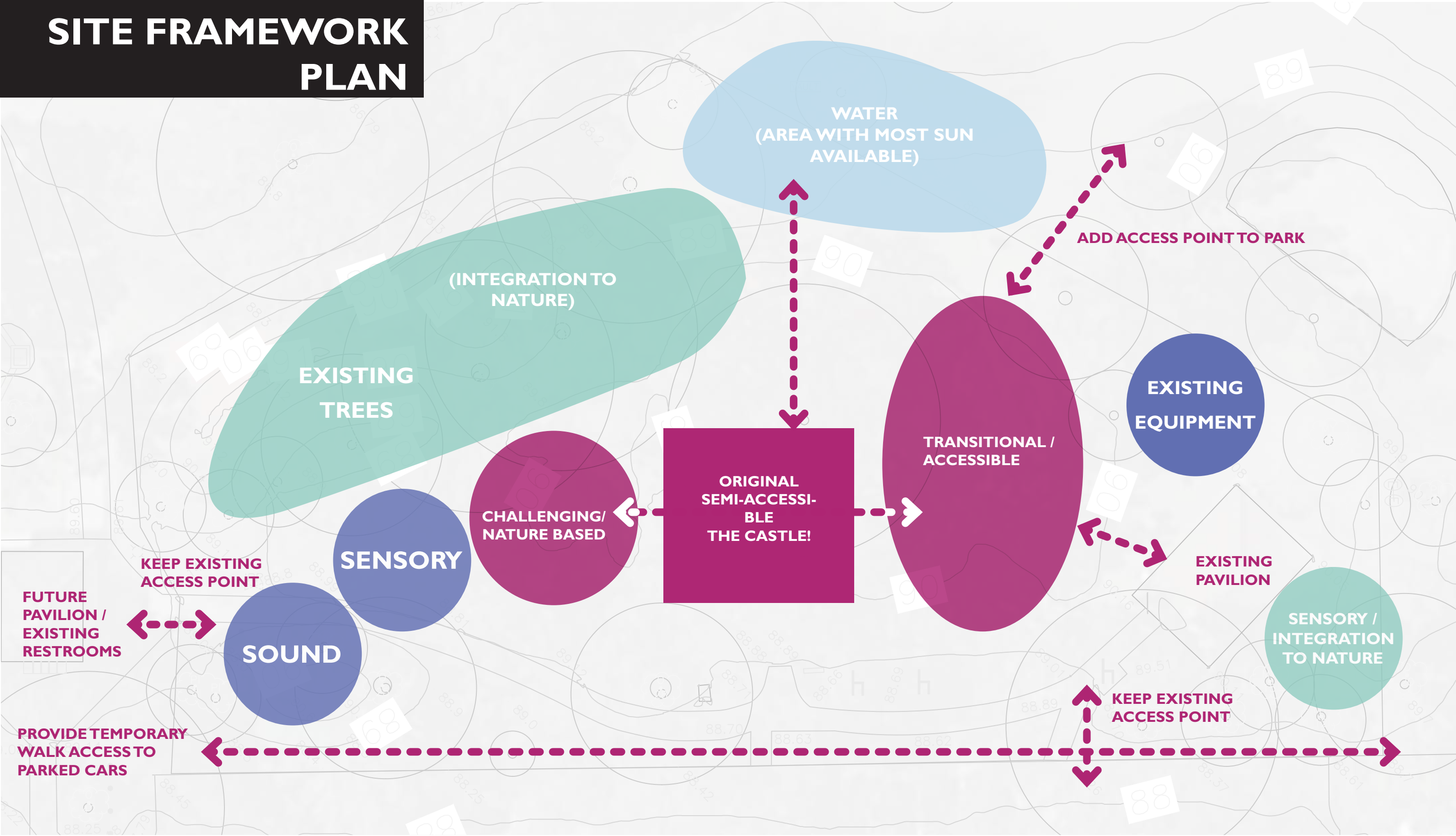




**SITE INVENTORY
+ ANALYSIS**



FEBRUARY 2023
SITE FRAMEWORK
PLAN

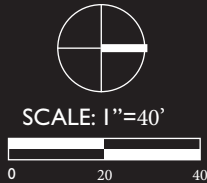


DR. MARTIN LUTHER KING JR. PARK:
PLAYGROUND + SPLASH PAD

- 1 ENTRY FROM PARKING LOT
- 2 EXISTING PAVILION
- 3 NATURE SENSORY STATION
- 4 RELOCATED SINGLE AND GROUP SWINGS
- 5 CASTLE PLATFORM OVER 5' ARTIFICIAL TURF MOUND
- 6 CONCRETE WALK ACCESS TO CASTLE PLATFORM
- 7 ROLLER SLIDES OVER TURF MOUND
- 8 OPEN TUBE SLIDE OVER MOUND
- 9 CLIMBING ROCKS
- 10 BRIDGE CONNECTION TO EXISTING CASTLE
- 11 EXISTING CASTLE PORTION TO REMAIN
- 12 CLIMBING TOWER
- 13 TUNNEL ENTRIES ON SENSORY WALL
- 14 POURED IN PLACE RUBBER PATH
- 15 PLAYGROUND MULCH
- 16 ROPE SWING
- 17 TRUNK STEPS TO SODDED EXISTING MOUND
- 18 SPLASH PAD / RIVERINE
- 19 RELOCATED PICNIC TABLES OVER MULCH
- 20 RELOCATED TODDLER SWINGS
- 21 ARTIFICIAL TURF MOUND WITH SENSORY "ROOMS" AND TUNNEL
- 22 SOUND EQUIPMENT ON ARTIFICIAL TURF
- 23 ENTRY FROM EXISTING RESTROOM
- 24 ENTRY FROM NORTH OF PARK
- 25 PLAYGROUND FENCE
- 26 EXISTING TREES, TYP.
- 27 PLAYGROUND SEATING ,TYP.
- 28 PROPOSED PALM TREES
- 29 SPLASH PAD EQUIPMENT



2022-05-10





Existing structure to be refurbished: new roofs, wood replacement, bringing to current safety standards

Netted bridge to original castle piece allows visual clarity

Platform to rolling slides can be accessed by the sloped walk, climbing elements, the old castle and by the surrounding mound

Artificial turf mound as a flexible and accessible point of access to the classic castle

Relocated swings near existing pavilion



All elements connect with the story of the castle including tunnels, climbing walls and ground material

Climbing tree trunks integrated into the natural mound by the existing Oak trees

Climbing tower connects to the south point of the castle, with sensory elements at various levels



KEY MAP

Splash pad is in riverine form, allowing for children's imagination to continue the castle and fort story throughout the playground

Raised artificial turf by caprock walls allow spaces for children and babies to sunbathe and rest

Various water experiences provided for different ages and preferences



SITE FURNISHINGS

PICNIC TABLE



EXISTING TABLES TO BE RELOCATED IF IN GOOD CONDITION



IF TABLES ARE TO BE REPLACED, USE MONOLINE CAROUSEL TABLE
MANUFACTURER: SITE PIECES
COLOR: TBD

SEATING



EXISTING LOG BENCHES TO BE RELOCATED IF IN GOOD CONDITION



ALL OTHER BENCHES TO FOLLOW EXISTING CITY STANDARD

TRASH RECEPTACLE



EXISTING TRASH RECEPTACLES TO BE RELOCATED IF IN GOOD CONDITION

BIKE RACK

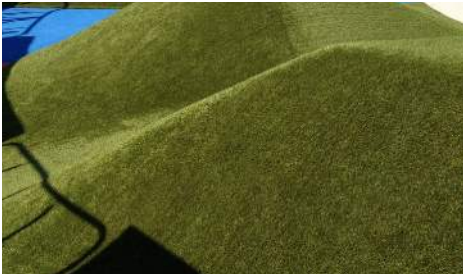


ROUND RACK
MANUFACTURER: DERO
COLOR: TBD

MATERIALS PALETTE



POURED IN PLACE RUBBER



ARTIFICIAL TURF



FLORIDA STONE WALLS



CONCRETE ROCK FORMATION



BOARD FORMED / STAMPED CONCRETE



EXPOSED AGGREGATE CONCRETE



SHREDDED HARDWOOD MULCH

LANDSCAPE MATERIAL



SABAL MINOR
DWARF PALMETTO



MUHLENBERGIA CAPILLARIS
MUHLY GRASS



NEPHROLEPIS BISERRATA
MACHO FERN



VIBURNUM OBOVATUM Densa
DWARF WALTER'S VIBURNUM



ILEX VOMITORIA
DWARF YAUPON



TRIPSACUM DACTYLOIDES
FAKAHATCHEE GRASS



HAMELIA PATENS
FIREBUSH

**FEBRUARY 2023
COMMUNITY
WORKSHOP 2**



FEBRUARY 2025
...IT TAKES
A VILLAGE...



...DREAM BIG! THE BEST IS YET TO COME.

FEBRUARY 2025
COMMUNITY
WORKSHOP 3



AUGUST 2025
COMMUNITY
WORKSHOP 4

WE ARE ONE STEP CLOSER TO A
RE-IMAGINED PLAYGROUND!





Recapping Where Were in February 2025...


PLAN KEY

- 1. PARK ENTRY GATE WITH FAUX DRAW BRIDGE AND 'CASTLE' TOWERS
- 2. EXISTING PAVILION
- 3. NATURE SENSORY STATION
- 4. RELOCATED SINGLE AND GROUP SWINGS
- 5. CASTLE PLATFORM OVER 5' ARTIFICIAL TURF MOUND
- 6. ROLLER SLIDES OVER TURF MOUND
- 7. OPEN TUBE SLIDE OVER MOUND
- 8. ROCKS WITH REPELLING ROPES
- 9. RETAINING WALL AT EXISTING TREE
- 10. CONCRETE ACCESS WALK
- 11. CONCRETE ACCESS STEPS
- 12. BRIDGE CONNECTION TO EXISTING CASTLE
- 13. EXISTING CASTLE PORTION TO REMAIN AND BE REFURBISHED
- 14. TOWER FEATURE WITH SLIDE
- 15. CLIMBING NET
- 16. TRAVERSING CARGO NET
- 17. CLIMBING WALLS
- 18. SENSORY WALL
- 19. 'DRAGON TAIL' CLIMBING FEATURE WITH TUNNELS
- 20. 'DRAGON HEAD' PLAY AREA ENTRY
- 21. POURED IN PLACE RUBBER PLAY SURFACING
- 22. PLAYGROUND MULCH
- 23. ROPE SWING
- 24. SPLASH PAD / RIVERINE WITH INTERACTIVE POP-JETS
- 25. RELOCATED PICNIC TABLES OVER MULCH
- 26. RELOCATED TODDLER SWING
- 27. ARTIFICIAL TURF MOUND WITH SENSORY 'ROOMS'
- 28. SOUND EQUIPMENT ON ARTIFICIAL TURF
- 29. ENTRY GATE FROM EXISTING RESTROOM
- 30. ENTRY GATE FROM PARK LAWN
- 31. PLAYGROUND FENCE
- 32. PLAYGROUND SEATING, TYP.
- 33. SPLASH PAD EQUIPMENT
- 34. SPLASH PAD SHOWER
- 35. BIKE RACKS WITH TRASH RECEPTACLE
- 36. LOW SCREEN WALL WITH LANDSCAPE




Universal Play
“An environment that is designed for all children of all abilities and their families.”


Inclusive Play
“Provides play opportunities to all children, regardless of disability or background.”



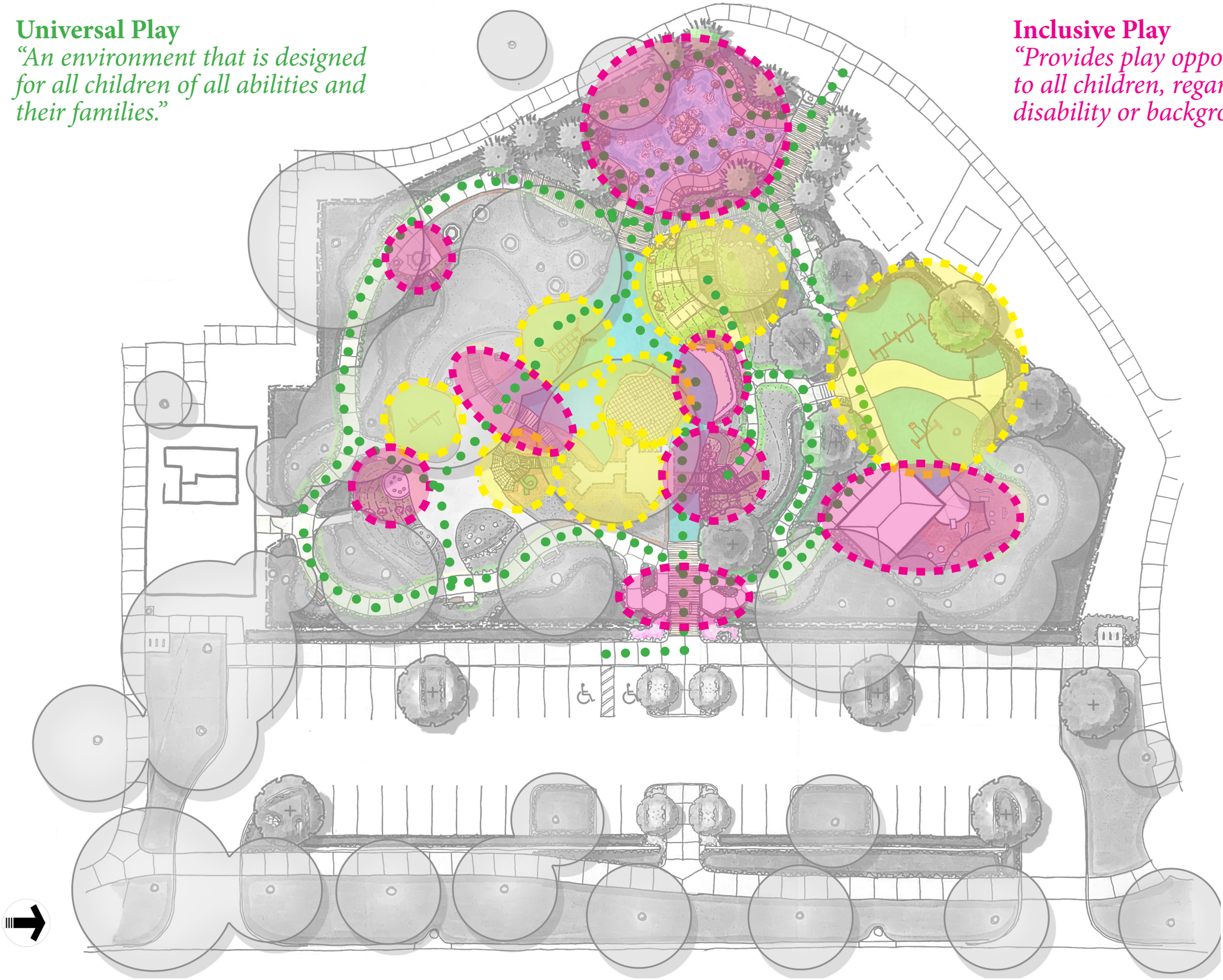
ADA/WHEELCHAIR CIRCULATION ROUTE



INDEPENDENT/INCLUSIVE PLAY OPPORTUNITY



ACCESSIBLE, ASSISTED PLAY OPPORTUNITY









'CASTLE TOWERS' ENTRY GATE - FRONT ELEVATION



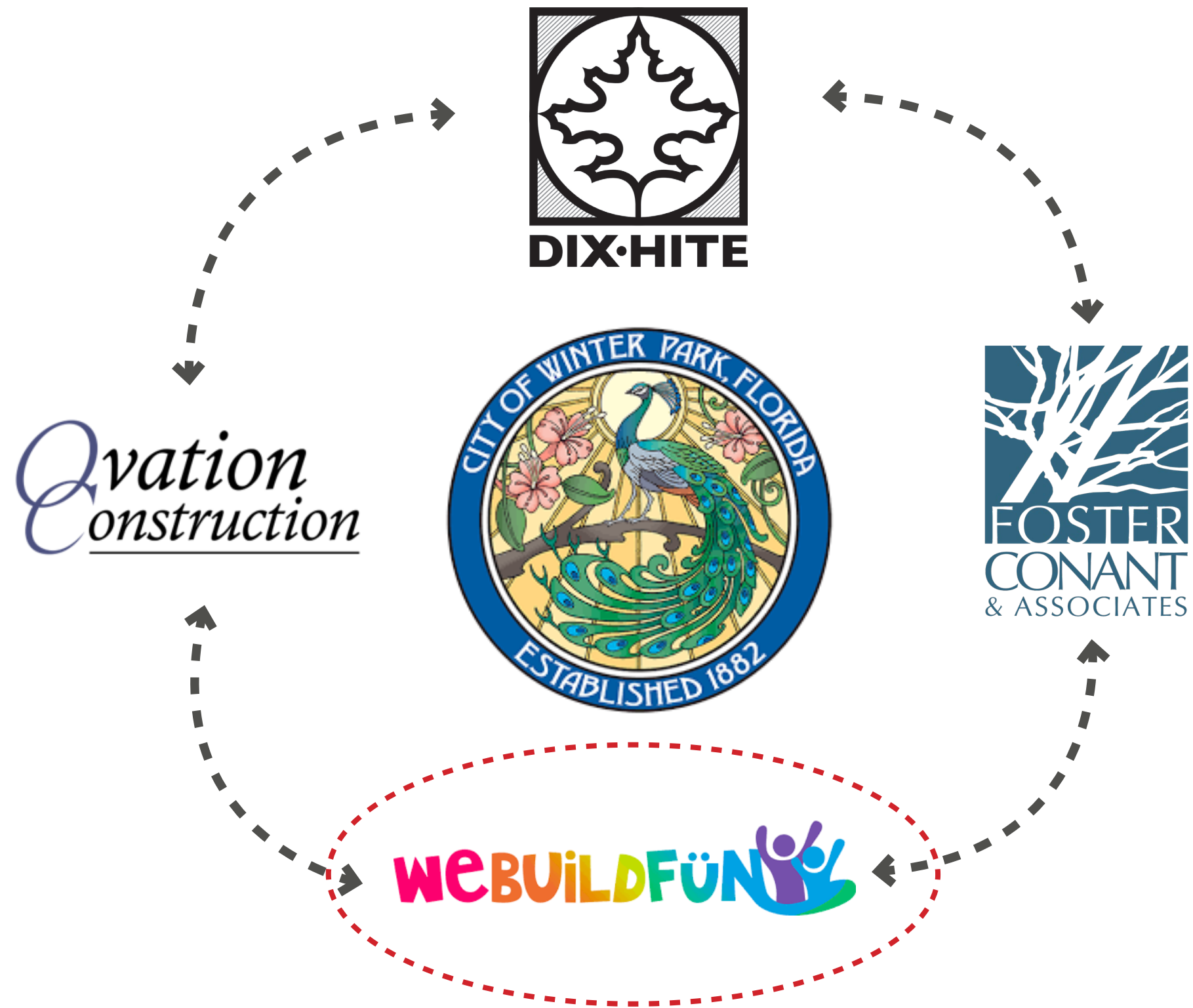
'CASTLE TOWER' ENTRY GATE - SIDE ELEVATION



PLAYGROUND 'CENTER PIECE' - FRONT ELEVATION FACING EAST



PLAYGROUND 'CENTER PIECE' - REAR ELEVATION FACING WEST



About Us

webuildfun is a commercial playground supplier for parks, schools, churches, homeowner associations, daycares and more. We are a certified WBENC have been the exclusive dealer for Miracle Recreation Equipment in DFW and Austin since 2007 and have expanded our territory to include West Texas, New Mexico, Michigan and now Florida

webuildfun currently holds the sales record for Miracle Recreation and is a repeat recipient of Sales Agency of the Year.



Building a Future of Fun, One Playground at a Time









ARTIST'S RENDERING







ARTIST'S RENDERING



ARTIST'S RENDERING





ARTIST'S RENDERING



THANK YOU! ✨