

CITY COMMISSION WORK SESSION
May 5, 2014

The work session was called to order by Mayor Kenneth Bradley at 4:04 p.m. in the Commission Chambers, 401 Park Avenue South, Winter Park, Florida.

Members present:

Mayor Kenneth Bradley
Commissioner Steven Leary
Commissioner Sarah Sprinkel
Commissioner Carolyn Cooper
Commissioner Tom McMacken

Also present:

City Manager Randy Knight
City Clerk Cynthia Bonham
Deputy City Clerk Michelle Bernstein
Public Works Director Troy Attaway

Others present:

Christopher Simoneaux, P.E., Comprehensive Engineering Services, Inc. (CES, Inc.)

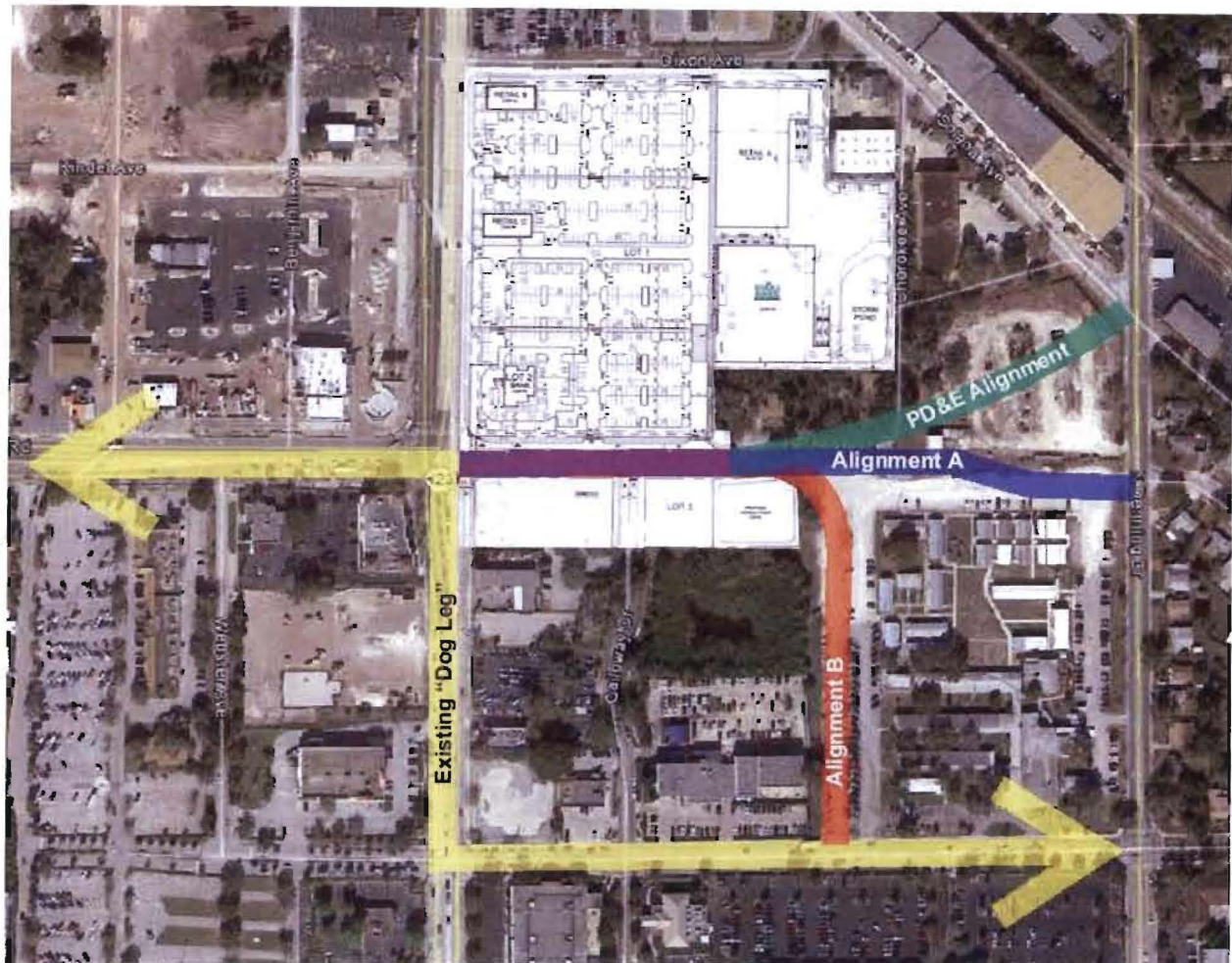
This meeting was a work session with no public input. Its purpose was to brief the Commissioners on the proposed Lee Road extension.

Public Works Director Troy Attaway explained that in 2004 FDOT completed a Project Development and Environmental (PD&E) report for improvements including the extension of Lee Road east of US 17-92 to Denning Drive in an effort to relieve congestion at the Webster Avenue/US 17-92 and Lee Road/US 17-92 intersections, primarily resulting from the large volume of left hand turning vehicles. This report was presented and approved by the Commission on May 24, 2004.

It was noted during the February 24, 2014 Commission meeting that the original Lee Road extension project is currently ranked #10 on MetroPlan Orlando's project list which is scheduled to be funded around 2018. As a result of the current developer wanting access to the traffic light at Lee Road for the proposed redevelopment of the Winter Park Corporate Square property, FDOT asked the developer to forward fund his project and go ahead with the street cut through now as part of his development; otherwise, he will not have access to this traffic light. In an effort to move things forward, the developer submitted to the City a copy of their traffic study report. In turn, the City hired traffic consultant CES, Inc. to review these alignments in light of the proposed development and provide recommendations.

On April 29, 2014, the City and the developer held a public workshop for the purpose of showing the proposed Lee Road Extension alternatives and gaining valuable public input. Over 100 participants attended and the City garnered 49 written comments, with a majority favoring the "Alignment B" option.

Mt. Attaway presented the three different alignment options as shown below for feedback and consideration.



"PD&E" alignment: The preferred alignment from the 2004 FDOT study shows Lee Road extending east along the Cherokee Avenue right of way then curving northward to a reconfigured Denning/Solana intersection using the school board property. The cost to construct this extension was originally estimated to be \$11.1 mil, including ROW acquisition. An updated cost estimate performed August 23, 2013 is \$13.7 mil.

"Alignment A": The developer proposed an alignment which shows Lee Road extending eastward and aligning with the Denning /Carver Street intersection. The developer proposed to restrict vehicles from turning left onto Denning or going straight to Carver Street from the extension in order to reduce the potential for additional trips on N. Park Avenue and surrounding neighborhoods.


"Alignment B": Through various discussions with the development team, the City proposed a third alignment where Lee Road extends eastward and then turns to the south intersecting Webster Avenue along the west property line of school board property.

A brief discussion transpired regarding the pros/cons with each scenario including the potential cut through traffic impacts to the local area and neighborhoods. In an effort to help keep traffic flowing more freely on US 17-92, a suggestion was made to not allow left hand turns to be made from US 17-92 onto Webster Avenue.

Christopher Simoneaux, representing CES, Inc. summarized their traffic report findings and recommended "Alignment B" as the preferred alignment stating various reasons including that it did the most to alleviate concerns of increasing trips along North Park Avenue or surrounding neighborhoods. Upon request, Mr. Simoneaux answered questions.

In conclusion, City Manager Knight advised that FDOT has asked the City to adopt a resolution supporting an alignment and asked for direction. A majority of the Commission favored the "Alignment B" option and requested that this item be added to the May 12 agenda for consideration.

The meeting adjourned at 5:01 p.m.

A handwritten signature in cursive script, reading "Cynthia S. Bonham". The signature is written in dark ink and is positioned above a horizontal line.

City Clerk Cynthia S. Bonham, MMC