



fiscal year
2015
city of **winter park**
REPORT CARD

Wonder how your city is performing? Throughout Fiscal Year (FY) 2015, key indicators were collected to track the City of Winter Park's performance across a number of categories. Inside you will find how the city measures up to its top priorities.

objectives

1. Exceptional quality of life
2. Intelligent growth & development
3. Fiscal stewardship
4. Public health & safety
5. Investment in public assets & infrastructure

Find the complete listing of the city's performance measurements at cityofwinterpark.org/pm.

Be the best place to live, work and play in Florida
for today's residents and future generations.

911 calls answered within 10 seconds

quarter	first	second	third	fourth
within 10 sec	98%	97%	97%	97%
call volume	6,042	6,180	5,886	5,814

goal answer 95% or more 911 calls within 10 seconds

objective Public health & safety

Police priority #1 response times

quarter	first	second	third	fourth
response times	0:02:55	0:02:23	0:02:13	0:02:47
call volume	66	69	59	71

goal respond under 3 minutes

objective Public health & safety

Fire-Rescue service response times [fire]

quarter	first	second	third	fourth
response times	0:07:09	0:07:10	0:07:34	0:07:52
call volume	13	13	13	07

benchmark respond under 12 min, 20 sec

objective Public health & safety

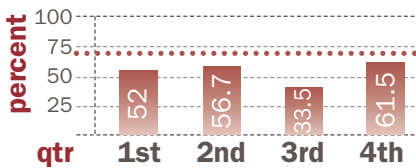
Fire-Rescue response times [medical]

quarter	first	second	third	fourth
response times	0:07:19	0:07:15	0:07:20	0:07:24
call volume	611	901	914	883

benchmark respond under 12 minutes

objective Public health & safety

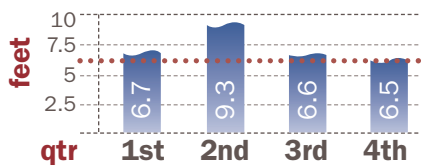
Code Compliance cases resolved in 30 days



goal resolve 70% of cases within 30 days

objective Public health & safety

Average lake clarity



goal clarity of 6.5 feet or more

objective Investment in public assets & infrastructure

..... goal line

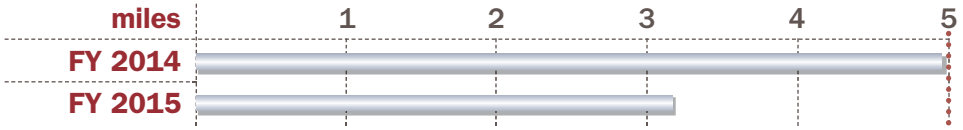
Tree plantings

quarter	first	second	third	fourth
trees planted	93	140	118	142

For every tree removed, one was planted in FY 2015.

objective quality of life

New electric lines underground



goal 5 miles

objective Investment in public assets & infrastructure

SAIDI

fiscal year	2014	2015
minutes	65.30	73.63

goal less than 60 minutes

objective Investment in public assets & infrastructure

SAIDI is the average outage duration for each customer served

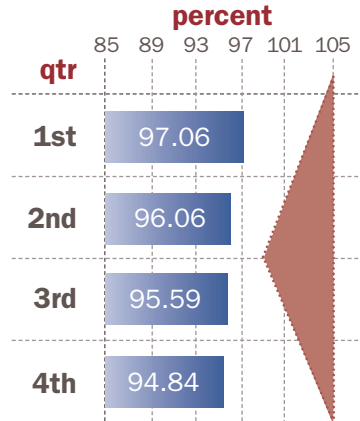
Parks maintenance costs



goal \$8,500 per acre

objective Fiscal stewardship

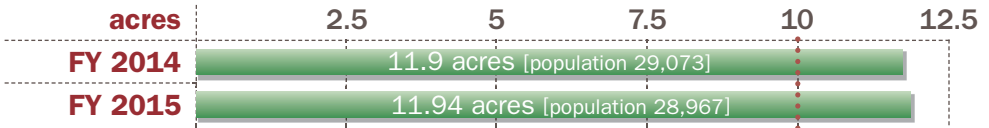
Electric Utility rates vs. state average



goal rates less than 105% of state average

objective Fiscal stewardship

Parks acreage per 1,000 people



goal greater than 10 park acres per 1,000 people

objective Exceptional quality of life

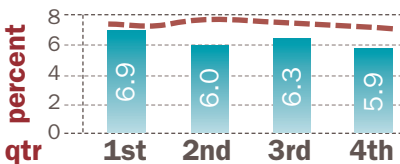
Roads paved

The city completed **7.2 miles** of road improvements, that includes bricking and repaving, using **94 percent** of the **\$280K** for materials budgeted in **FY 2015**.

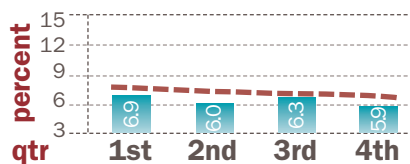
objective Investment in public assets & infrastructure

Economic indicators

Retail vacancies FY 15



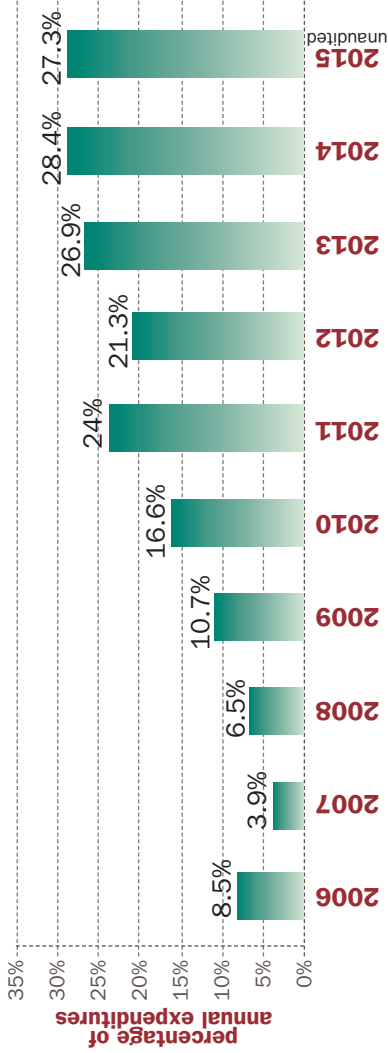
Office vacancies FY 15



objective Intelligent growth & development

----- regional vacancy rate

General Fund cash reserves



objective Fiscal stewardship

Governments hold cash in reserve for a variety of reasons. Often money is set aside to prepare for emergencies, such as natural disasters or unrealized revenues. Reserves may also be accumulated to fund specific projects or to position the city to take advantage of matching grants or land purchase opportunities.



401 South Park Avenue
Winter Park, FL 32789