

CITY OF WINTER PARK, FLORIDA

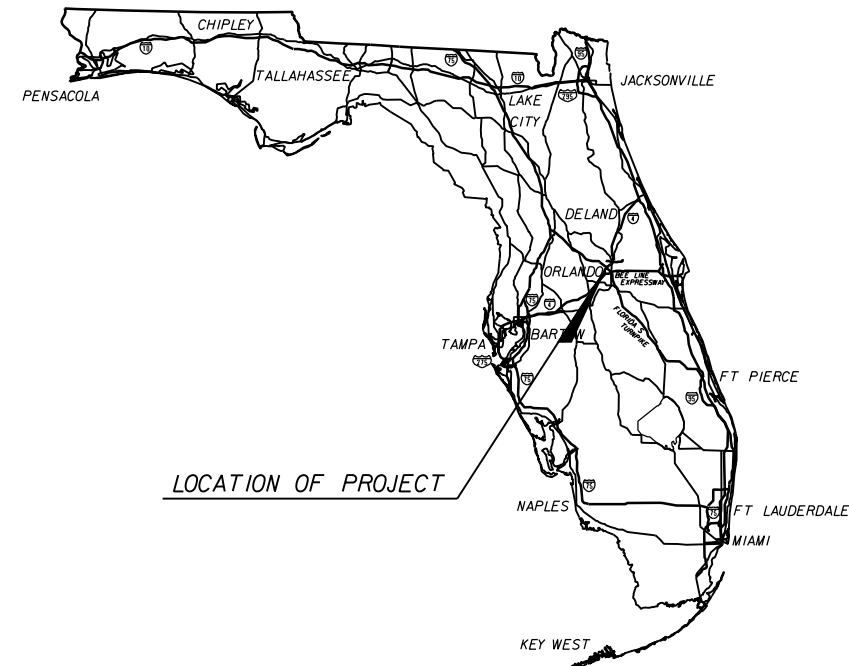
CONTRACT PLANS

FAIRBANKS AVENUE (S.R. 426)
FROM I-4 TO US 17-92
FPID 423353-I-58-01
ORANGE COUNTY (75006)

SIGNALIZATION PLANS

INDEX OF SIGNALIZATION PLANS

SHEET NO.	SHEET DESCRIPTION
T-1	KEY SHEET
T-2	TABULATION OF QUANTITIES
T-3 - T-4	GENERAL NOTES
T-5 - T-8	SIGNALIZATION PLANS
T-9	GUIDE SIGN WORKSHEET
T-10	MAST ARM TABULATION
T-11	STANDARD MAST ARM ASSEMBLIES DATA TABLE
T-12	UTILITY CONFLICT PLAN
T-13 - T-14	REPORT OF SPT BORINGS FOR MAST ARMS SIGNAL POLES ON FAIRBANKS AVENUE
T-15	TRAFFIC MONITORING SITES



SIGNALIZATION SHOP DRAWINGS
TO BE SUBMITTED TO:
DEEANGELA R. TJIKUENI, P.E.
CH2M HILL
225 E. ROBINSON ST.
SUITE 505
ORLANDO, FLORIDA 32801
(407) 423-0030

PLANS PREPARED BY:

CH2MHILL
225 E. ROBINSON ST.
SUITE 505
ORLANDO, FLORIDA 32801
(407) 423-0030

NOTE: THE SCALE OF THESE PLANS MAY
HAVE CHANGED DUE TO REPRODUCTION.

90% PLANS
MAY 2011

KEY SHEET REVISIONS		
DATE	BY	DESCRIPTION

SIGNALIZATION PLANS
ENGINEER OF RECORD: DEEANGELA R. TJIKUENI

P.E. NO.: 68301

FISCAL YEAR	SHEET NO.
2011	T-1

CITY PROJECT MANAGER: DAVID L. ZUSI, P.E. FDOT PROJECT MANAGER: TUSHAR PATEL

TABULATION OF QUANTITIES																																	
PAY ITEM NO.	DESCRIPTION	UNIT	SHEET NUMBERS																				TOTAL THIS SHEET		GRAND TOTAL		REF. SHEET						
			T-5		T-6		T-7		T-8		T-15																						
			PLAN	FINAL	PLAN	FINAL	PLAN	FINAL	PLAN	FINAL	PLAN	FINAL	PLAN	FINAL	PLAN	FINAL	PLAN	FINAL	PLAN	FINAL	PLAN	FINAL	PLAN	FINAL	PLAN	FINAL		PLAN	FINAL				
630-1-12	CONDUIT-SIGNALS, F&I, UNDERGROUND	LF	298		182		678		682		15												1855		1855								
630-1-13	CONDUIT-SIGNALS, F&I, SAWCUT & PLACE UNDER EXISTING PAVEMENT	LF	120		18		176		115		2												431		431								
630-1-14	CONDUIT, SIGNALS, F&I, UNDERGROUND JACKED	LF	349		385		245		240														1219		1219								
632-7-1	CABLE, SIGNAL, FURNISH & INSTALL	PI					1		1														2		2								
635-1-11	PULL & JUNCTION BOXES, F&I, PULL BOX	EA	10		8		9		9		2												38		38								
639-1-21	SIGNALS, ELECTRICAL POWER SERVICE, UNDERGROUND, METER FURNISHED BY POWER COMPANY	AS					1		1														2		2								
639-2-1	SIGNALS, ELECTRICAL SERVICE WIRE	LF					295		296														591		591								
641-2-12	PRESTRESSED CONCRETE POLE, F&I, TYPE P-11 SERVICE POLE	EA					1		1														2		2								
649-31-214	MAST ARM, F&I, WIND SPEED-130, DOUBLE ARM, W/O LUMINAIRE, 46' AND 46'	EA							1														1		1								
649-31-215	MAST ARM, F&I, WIND SPEED-130, DOUBLE ARM, W/O LUMINAIRE, 46' AND 60'	EA					1																1		1								
649-31-216	MAST ARM, F&I, WIND SPEED-130, DOUBLE ARM, W/O LUMINAIRE, 46' AND 70.5'	EA							1														1		1								
649-31-217	MAST ARM, F&I, WIND SPEED-130, DOUBLE ARM, W/O LUMINAIRE, 60' AND 60'	EA					1																1		1								
650-51-311	TRAFFIC SIGNAL, F&I, 3 SECTION, 1WAY, STANDARD	AS					8		7														15		15								
650-51-411	TRAFFIC SIGNAL, F&I, 4 SECTIONS, 1WAY, STANDARD	AS					1		2														3		3								
653-191	PEDESTRIAN SIGNAL, F&I, LED-COUNT DOWN, 1 DIRECTION	AS	1		2				4														7		7								
653-192	PEDESTRIAN SIGNAL, F&I, LED-COUNT DOWN, 2 DIRECTION	AS					4		2														6		6								
659-106	SIGNAL HEAD AUXILIARIES, F&I, TUNNEL VISOR	EA					28		29														57		57								
659-107	SIGNAL HEAD AUXILIARIES, F&I, ALUMINUM PEDESTAL	EA	1		2		4		2														9		9								
660-2-102	LOOP ASSEMBLY, F&I, TYPE B	AS	4		4																		8		8								
660-2-106	LOOP ASSEMBLY, F&I, TYPE F	AS	4		5																		9		9								
663-74-11	VEHICLE DETECTOR ASSEM, F&I, OPTICAL TYPE	EA					4		4														8		8								
665-12	PEDESTRIAN DETECTOR, F&I, DETECTOR STATION WITH POST & SIGN	EA							4														4		4								
665-13	PEDESTRIAN DETECTOR, F&I, DETECTOR WITH SIGN ONLY	EA	1		2		8		4														15		15								
665-40	PEDESTRIAN DETECTOR, RELOCATE	EA	1		1																		2		2								
670-5-110	TRAFFIC CONTROLLER ASSEMBLY, F&I, NEMA	AS					1		1														2		2								
690-10	SIGNAL HEAD TRAFFIC ASSEMBLY REMOVAL	EA					5		7														12		12								
690-20	SIGNAL PEDESTRIAN ASSEMBLY REMOVAL	EA	1		2		2		1														6		6								
690-32-1	POLE REMOVAL, SHALLOW DIRECT BURIAL	EA					2		2														4		4								
690-50	CONTROLLER ASSEMBLY, REMOVE, COMPLETE ASSEMBLY	EA					1		1														2		2								
690-60	DETECTOR VEHICLE ASSEMBLY REMOVE	EA					10		10														20		20								
690-70	DETECTOR PEDESTRIAN ASSEMBLY REMOVE	EA	1		2		2		2														7		7								
690-80	SPAN WIRE ASSEMBLY, REMOVE	EA					1		1														2		2								
690-90	CONDUIT & CABLING REMOVE	PI					1		1														2		2								
690-100	SIGNAL EQUIPMENT MISCELLANEOUS REMOVE	PI	1		1																		2		2								
699-1-1	INTERNAL ILLUM SIGN, F&I, STREET NAME	EA					4		4														8		8								
741-70-111	TMS VEHICLE SENSOR, CLASS 11, F&I, TYP 1, 1/2 LN	EA									4												4		4								
745-70-12	TMS INDUCTIVE LOOP ASSEM, F&I, 2 LOOPS/LANE	AS									16												16		16								
746-71-131	TMS CABINET, F&I, TYP 111, PEDESTAL MOUNT, 1 BACKPLANE	EA									2												2		2								
REVISIONS																																	
DATE	BY	DESCRIPTION					DATE	BY	DESCRIPTION					Engineer of Record: DeeAngela R. Tjikueni P.E. License No.: 68301 CH2M HILL 225 E. ROBINSON STREET SUITE 505 ORLANDO, FL 32801-4322 CERTIFICATE OF AUTHORIZATION NO. 000072										CITY OF WINTER PARK			TABULATION OF QUANTITIES						SHEET NO.
														SR 426	ORANGE		2010-01												T-2				

GENERAL NOTES:

1. UNLESS OTHERWISE NOTED, ALL REMOVED EQUIPMENT SHALL BE TURNED OVER TO THE CITY OF WINTER PARK AT 707 NICOLET AVENUE OR DISPOSED OF AS DIRECTED BY THE ENGINEER, EXCEPT POLES, WHICH SHALL BE DISPOSED OF BY THE CONTRACTOR. CONTRACTOR TO NOTIFY THE CITY OF WINTER PARK, WAYNE (BUTCH) MARGRAF AT (407) 599-3411 TWO (2) BUSINESS DAYS PRIOR TO BEGINNING CONSTRUCTION.
2. IT SHOULD BE NOTED THAT NO TEST BORINGS WERE MADE WHERE CONDUIT RUNS ARE TO BE INSTALLED BY JACKING, DIRECTIONAL BORING, OR TRENCHING. IT SHALL BE THE CONTRACTORS RESPONSIBILITY TO EXAMINE THE JOB SITE CONDITIONS BEFORE SUBMITTING BID PROPOSALS IN ACCORDANCE WITH SECTION 2-4 OF THE SPECIFICATIONS.
3. THE CONTRACTOR SHALL MAINTAIN THE EXISTING TRAFFIC SIGNALS DURING THIS PROJECT.
4. THE CONTRACTOR SHALL NOTIFY THE SUNSHINE STATE ONE CALL AT 811-432-4770 AND THE APPROPRIATE UTILITY COMPANIES LISTED BELOW AT LEAST 2 FULL BUSINESS DAYS IN ADVANCE OF CONSTRUCTION OPERATIONS.
5. THE CONTRACTOR SHALL ADHERE TO ALL CITY AND COUNTY ORDINANCES AND STATE REGULATIONS DURING ALL CONSTRUCTION OPERATIONS.
6. THE CONTRACTOR SHALL VERIFY THE LOCATION OF ALL UTILITIES PRIOR TO EXCAVATION.
7. THE CONTRACTOR SHALL PROVIDE THE CITY OF WINTER PARK ONE SET OF AS-BUILTS MEETING REQUIREMENTS OF SECTION 611 OF THE FDOT SPECIFICATIONS.
8. THE CONTRACTOR SHALL ADHERE TO OSHA RULE (29 CFR PART 1926 - EFFECTIVE 11/10) AS REFERENCED IN FDOT ROADWAY DESIGN BULLETIN 11-03.

SIGNALIZATION GENERAL NOTES:

1. ALL PEDESTRIAN PHASES TO BE ACTUATED BY PUSH BUTTON.
2. THE CONTRACTOR WHO IS ENGAGED IN INSTALLING OR MAINTAINING TRAFFIC SIGNALS SHALL HAVE ALL WORK PERFORMED UNDER THE SUPERVISION OF A TECHNICIAN CERTIFIED BY THE INTERNATIONAL MUNICIPAL SIGNAL ORGANIZATION (IMSA) AS A LEVEL 11 TRAFFIC SIGNALS TECHNICIAN. THE TECHNICIAN SHALL REPORT TO THE JOB SITE WITHIN TWO HOURS OF NOTIFICATION TO THE WORK SITE SUPERVISOR TO CORRECT ANY PROBLEM OR EMERGENCY THAT MAY ARISE. IN ADDITION, A TECHNICIAN CERTIFIED AS AN IMSA LEVEL 1 TRAFFIC SIGNAL TECHNICIAN SHALL BE PRESENT ON THE JOB SITE AT ALL TIMES THE TRAFFIC SIGNALIZATION WORK IS IN PROGRESS. THE CONTRACTOR SHALL PROVIDE A LOCAL 24 HOUR TELEPHONE NUMBER TO THE FDOT ENGINEER PRIOR TO ANY CONSTRUCTION OF SIGNALIZED LOCATION.
3. INSTALL CONDUIT ACCORDING TO ROADWAY AND TRAFFIC DESIGN STANDARDS, INDEX 17721.
4. USE CONDUITS OF SUFFICIENT SIZE TO ALLOW THE CONDUCTORS TO BE INSTALLED WITHOUT ANY DAMAGE AND MEETING NEC REQUIREMENTS. USE CONDUIT THAT IS AT LEAST TWO INCHES (50MM) IN DIAMETER, EXCEPT FOR ELECTRICAL POWER AND TELEPHONE SERVICE DUCTS, WHICH SHALL BE MINIMUM OF ONE INCH (25MM) IN DIAMETER.
5. VERIFY COLOR CODES FOR THE SIGNAL CABLE WITH THE LOCAL TRAFFIC SIGNAL MAINTAINING AGENCY PRIOR TO ORDERING MATERIAL.
6. PROVIDE PULL BOXES WITH LIDS CONSTRUCTED OF NON-DIELECTRIC COMPOSITE MATERIAL. THESE LIDS SHALL BE STAMPED OR CAST WITH THE MANUFACTURER'S LOGO AND THE LEGEND "TRAFFIC SIGNAL".
7. THE CONTRACTOR SHALL ADJUST CONDUIT & PULL BOXES IN ORDER TO AVOID ANY POSSIBLE CONFLICTS WITH UNDERGROUND UTILITIES.
8. IF REQUIRED, THE CONTRACTOR SHALL PROVIDE THE NECESSARY EQUIPMENT FOR SUPPORTING EXISTING UTILITY POLES DURING CONSTRUCTION OF NEW SIGNAL POLES AND FOUNDATIONS. THE CONTRACTOR SHALL COORDINATE THIS EFFORT WITH THE UTILITY COMPANIES.
9. SIGNAL POLE STATIONING AND OFFSETS MAY REQUIRE MINOR ADJUSTMENTS IN THE FIELD TO INSURE HORIZONTAL CLEARANCE IS MAINTAINED FROM THE EDGE OF TRAVEL TO THE CLOSEST SURFACE OF THE POLE AND WITHIN ROADWAY RIGHT-OF-WAY.
10. THE CONTRACTOR IS RESPONSIBLE FOR VERIFYING ALL SIGNAL POLE AND ROADWAY ELEVATIONS PRIOR TO POLE FABRICATION AND PLACEMENT.
11. THE CONTRACTOR TO HAND DIG THE FIRST 4' AT EACH POLE LOCATION AND 2' AT EACH PEDESTAL TO VERIFY THAT THERE ARE NO UTILITY CONFLICTS. CONTACT THE APPROPRIATE UTILITY COMPANIES FOR LOCATES 2 FULL BUSINESS DAYS PRIOR TO ANY EXCAVATION.
12. THE CONTRACTOR IS REQUIRED TO INSPECT THE INSTALLATION OF THE TRAFFIC SIGNALS IN ACCORDANCE WITH FDOT SPECIFICATION 105-5.10. THE CONTRACTOR SHALL COORDINATE THE FINAL ACCEPTANCE INSPECTION IN ACCORDANCE WITH FDOT SPECIFICATION 611-2.2 WITH THE ENGINEER AT LEAST TEN DAYS IN ADVANCE. THE CITY OF WINTER PARK TRAFFIC MANAGER, BUTCH MARGRAF AT (407) 599-3411 AND THE FDOT TRAFFIC SIGNAL QUALITY ASSURANCE MANAGER AT (386) 943-5318 SHOULD ALSO BE CONTACTED TEN DAYS BEFORE THE INSPECTION IS TO BE PERFORMED SO THEY MAY BE PRESENT.
13. FOR MISCELLANEOUS STRUCTURES THAT HAVE BEEN COMPLETED AND SCHEDULED FOR ACCEPTANCE, THE CONTRACTOR SHALL CONTACT DISTRICT FIVE STRUCTURES MAINTENANCE OFFICE AT (386)-740-3463 ONE MONTH PRIOR TO COMPLETION OF PROJECT TO SCHEDULE AN INSPECTION OF STRUCTURES INCLUDING: CABLE SIGNS, CANTILEVER SIGNS, TRUSS SIGNS, HIGH MAST LIGHT POLES, ITS, DMS AND TRAFFIC SIGNAL MAST ARMS.
14. ANY NEW OR EXISTING STRIPING CUT BECAUSE OF LOOP PLACEMENT SHALL BE RE-STRIPED PRIOR TO ACCEPTANCE.
15. TYPE "F" LOOPS SHALL BE 6' X 40' AND EXTEND 5' PAST THE STOP BAR UNLESS SHOWN OTHERWISE IN PLANS.

16. IN THE EVENT PERMANENT VEHICLE DETECTION IS DISRUPTED, PROVIDE AN ALTERNATIVE MEANS OF DETECTION TO ALL LANES APPROACHING THE INTERSECTION, SEPARATING EACH MOVEMENT WHICH PREVIOUSLY HAD DETECTION. THE TYPE OF DETECTOR SHALL BE APPROVED BY THE ENGINEER PRIOR TO INSTALLATION. EQUIPMENT SHALL ONLY DETECT THE INTENDED MOVEMENT.
17. WHENEVER POSSIBLE, ALL LOOPS AND SYSTEM SENSORS SHALL BE CUT INTO THE ASPHALTIC CONCRETE STRUCTURAL COURSE PRIOR TO PLACEMENT OF THE FRICTION COURSE. ALL LOOP LEAD-IN CABLES SHALL BE PLACED IN CONDUIT.

PAY ITEM NOTES:

1. THE CONTRACTOR HAS THE OPTION TO USE DIRECTIONAL BORE AS THE CONDUIT INSTALLATION METHOD FOR PAY ITEM 630-1-14
2. PAY ITEM 639-1-21 TO INCLUDE ALL FEES BY THE POWER COMPANY FOR ENERGIZING THE POWER SERVICE.
3. PAY ITEM 699-1-1 SHALL INCLUDE A MASTER PHOTOCELL MOUNTED EITHER INSIDE THE CABINET WITH A 2" PLEXIGLASS WINDOW, OR NEAR THE ELECTRIC SERVICE WITHIN REACH OF A LIFT TRUCK. THE PHOTOCELL SHALL BE INSTALLED WHERE STREETLIGHTS DO NOT AFFECT OPERATION.

CONTROLLER NOTES:

1. THE CONTROLLER ASSEMBLY SHALL CONSIST OF A NEMA TS 2 CABINET WITH A TS2 TYPE 2 CONTROLLER. THE CONTROLLER ASSEMBLY SHALL HAVE ALL NECESSARY HARDWARE TO COMMUNICATE WITH CITY OF WINTER PARK SIGNAL SYSTEM. ANY ADDITIONAL EQUIPMENT AND/OR ACCESSORIES REQUIRED FOR THE TERMINATION AND OPERATION OF THE FIBER OPTIC INTERCONNECT CABLE SHALL BE FURNISHED AND INSTALLED AS PART OF THE CONTROLLER ASSEMBLY.
2. A MANUAL PUSH-BUTTON CORD SHALL BE FURNISHED IN THE CONTROLLER CABINET.
3. THE CONTROLLER CABINET SHALL BE ORIENTED SO THAT THE DOOR OPENS AWAY FROM THE INTERSECTION.

SIGNAL HEAD NOTES:

1. ALL VEHICULAR SIGNAL HEAD ASSEMBLIES SHALL BE BLACK, CAST ALUMINUM WITH TUNNEL VISORS AND LEDS.

PED FEATURES NOTES:

1. THREE (3) SPARE CONDUCTORS ARE TO BE RUN TO THE FURTHEST PEDESTRIAN SIGNAL HEAD.
2. ALL PEDESTRIAN SIGNALS SHALL BE 16" LED, COUNTDOWN TYPE.

MAST ARM NOTES:

1. IF A CONTINUOUS RUN OF SIGNAL CABLE IS NOT POSSIBLE FROM THE CABINET TO THE SIGNAL HEAD, THEN A TERMINAL BLOCK SHALL BE USED.
2. SIX FEET OF ADDITIONAL SIGNAL CABLE SLACK SHALL BE WOUND INSIDE THE UPRIGHT AND SUPPORTED BY THE CABLE CLAMP SUCH THAT THE TERMINAL BLOCK CAN BE REMOVED FROM THE UPRIGHT TO ALLOW FOR TROUBLE SHOOTING.
3. THE CABLE GRIP SHALL BE OF SUFFICIENT SIZE TO NOT COMPROMISE THE INSULATION ON THE SIGNAL CABLE.
4. FDOT WILL BE THE OWNER AND THE CITY OF WINTER PARK WILL BE MAINTAINING AGENCY OF THE MAST ARMS UPON PROJECT ACCEPTANCE.

TRAFFIC MONITORING SITE NOTES:

1. NOTIFY THE DISTRICT TRAFFIC OPERATIONS OFFICE AT LEAST TEN (10) WORKING DAYS PRIOR TO BEGINNING ANY WORK. CONTACT JERRY TRAUDT AT (386) 943-5380 CONCERNING ANY QUESTIONS. THE DISTRICT TRAFFIC OPERATIONS OFFICE MUST APPROVE ANY CHANGE TO THE PROPOSED COUNT STATION LOCATION.
2. INSTALL TYPE 111 BASE-MOUNTED TRAFFIC MONITORING SITE CABINETS, PER ROADWAY AND TRAFFIC DESIGN STANDARD 17900. AND THE FOLLOWING:

- A PULL BOX IS TO BE PLACED APPROXIMATELY 4 FEET FROM THE PAVEMENT EDGE.

- THE CABINETS SHALL BE WIRED WITH THE "J" & "P" AMPHENOL CLASSIFICATION AND ADR-1000 WIRING HARNESSES.
3. FURNISH AND INSTALL PIEZOELECTRIC AXLE SENSORS AND SPEED CLASSIFICATION LOOP ASSEMBLIES PER ROADWAY AND TRAFFIC DESIGN STANDARDS 17721, 17781 AND 17900.
4. SPLICE ALL LOOP WIRES, IN PULL BOXES, TO SHIELDED "HOMERUN CABLE" (INCLUDED IN THE LOOP ASSEMBLY), AND EXTEND THEM THROUGH A 2-INCH CONDUIT TO THE CABINET. PIEZO LEADS SHALL NOT BE SPLICED. RUN THE PIEZO AXLE SENSOR LEADS THROUGH A SEPARATE 2-INCH CONDUIT TO THE CABINET.
5. PULL BOXES AND COVERS SHALL BE FDOT APPROVED OF NON-METALLIC CONSTRUCTION WITH RECESSED COVER LOGO "TRAFFIC SIGNALS".

R E V I S I O N S						Engineer of Record: DeeAngela R. Tjikueni P.E. License No.: 68301 CH2M HILL 225 E. ROBINSON STREET SUITE 505 ORLANDO, FL 32801-4322 CERTIFICATE OF AUTHORIZATION NO. 000072	CITY OF WINTER PARK			SHEET NO.
DATE	BY	DESCRIPTION	DATE	BY	DESCRIPTION		ROAD NO.	COUNTY	CITY PROJECT NO.	
							SR 426	ORANGE	2010-01	

GENERAL NOTES

T-3

PROGRESS ENERGY CONSTRUCTION GUIDELINES:

1. NOTIFICATIONS TO PROGRESS ENERGY-TRANSMISSION:
- a. ANY TEMPORARY BRACING OR HOLDING OF PROGRESS ENERGY-TRANSMISSION POLES, EXISTING OR PROPOSED, REQUIRED FOR CONSTRUCTION WILL REQUIRE 30 WORKING DAYS ADVANCE NOTICE TO THE PROGRESS ENERGY-TRANSMISSION FIELD REPRESENTATIVE.

b. WHEN REQUESTING OUTAGES THE CONTRACTOR(S) MUST FOLLOW THE FOLLOWING GUIDELINES:

1. PROGRESS ENERGY-TRANSMISSION REQUIRES 21 DAYS LEAD TIME FOR ANY REQUESTED OUTAGE FOR ANY TRANSMISSION LINE. TOTAL START TO FINISH DURATION FOR EACH REQUESTED OUTAGE IS REQUIRED, ALONG WITH DAILY TIME FRAMES.

2. IN CASES OF MULTIPLE TRANSMISSION LINES, PROGRESS ENERGY-TRANSMISSION WILL ONLY ALLOW ONE CIRCUIT OUT OF SERVICE AT ANY GIVEN TIME.

3. IF AT ANY TIME A DE-ENERGIZED LINE WILL NEED TO BE PLACED BACK INTO SERVICE, SUCH AS A SYSTEM EMERGENCY (HURRICANE, LOSS OF ANOTHER TRANSMISSION LINE, AND/OR EXTREME LOAD, ETC.), PROGRESS ENERGY-TRANSMISSION WILL ASK THE ROADWAY CONTRACTOR, WITHIN A TWO HOUR PERIOD, TO SHUT DOWN ANY CONSTRUCTION THAT WOULD RESTRICT PROGRESS ENERGY-TRANSMISSION CONSTRUCTION CREWS FROM PLACING THE DE-ENERGIZED LINE BACK INTO SERVICE.

4. TYPICALLY, ANY DE-ENERGIZING OF ANY PROGRESS ENERGY-TRANSMISSION LINES CAN ONLY OCCUR DURING THE FOLLOWING TIME PERIODS; OCTOBER 1st TO NOVEMBER 15th, AND MARCH 1st TO APRIL 15th. ANY ADDITIONAL REQUIRED DE-ENERGIZED TIME PERIODS NEEDED THROUGHOUT THE PROJECT WILL NEED TO BE COORDINATED WITH EITHER THE UTILITY AGENCY OWNER (UAO) FIELD OR PROJECT REPRESENTATIVE.

5. DE-ENERGIZED TIME PERIODS CAN NOT EXCEED A TWO WEEK DURATION, A NEW REQUEST IS REQUIRED IF ADDITIONAL TIME IS NEEDED.

6. PROGRESS ENERGY-TRANSMISSION CAN NOT GUARANTEE THAT THE CONTRACTOR WILL GET THE APPROVAL FOR THE OUTAGE, IT IS THE ROADWAY CONTRACTORS RESPONSIBILITY TO FOLLOW UP WITH THE FIELD REPRESENTATIVE.
2. DURING CONSTRUCTION, THE CONTRACTOR(S) CAN NOT HAVE ANY EQUIPMENT HEIGHT EXCEEDING 20 FEET UNDER OR NEAR OVERHEAD ENERGIZED TRANSMISSION LINES TO AVOID INJURY OR DEATH BY ELECTROCUTION.
3. WHEN THE ROADWAY CONTRACTOR IS EXCAVATING NEAR OR AROUND PROGRESS ENERGY-TRANSMISSION FACILITIES, THEY SHALL PROVIDE AT LEAST A FIFTEEN (15') FEET HORIZONTAL RADIUS ADJACENT TO THE FACILITY, IF THIS CANNOT BE MET, A NOTIFICATION TO THE PROGRESS ENERGY FLORIDA (PEF) FIELD REPRESENTATIVE TO ARRANGE FOR A FIELD MEETING.
4. THE ROADWAY CONTRACTOR IS PROHIBITED TO STACK MATERIAL (SOILS, FILL DIRT, GRAVEL, ETC.) UNDER OR NEAR ENERGIZED OVERHEAD POWER LINES EXCEEDING NATIONAL ELECTRIC SAFETY CODE (NESC) AND PEF REQUIREMENTS. THE ROADWAY CONTRACTOR MUST MAINTAIN TO FOLLOWING VERTICAL CLEARANCES FROM THE TRANSMISSION WIRES:

a. 69kv TRANSMISSION LINES20 feet

b. 115kv TRANSMISSION LINES21 feet

c. 230kv TRANSMISSION LINES23 feet

d. 500kv TRANSMISSION LINES29 feet

IF THE ROADWAY CONTRACTOR NEEDS ASSISTANCE IN CALCULATING THE MAXIMUM HEIGHT OF THE MATERIAL PILES, HE CAN CONTACT THE UAO PROJECT REPRESENTATIVE PRIOR TO UNLOADING THE MATERIAL.

THE USE OF EQUIPMENT ENCROACHING INTO THE ABOVE MENTIONED CLEARANCES WILL RESULT IN AN OSHA AND NESC VIOLATION.

UTILITY CONTACTS

1. THE CONTRACTOR SHALL NOTIFY UTILITY OWNERS LISTED BELOW THROUGH SUNSHINE ONE CALL OF FLORIDA, INC. (1-800-432-4770) TWO BUSINESS DAYS IN ADVANCE OF BEGINNING CONSTRUCTION ON THE JOB SITE:

UTILITY AGENCY OWNER	TELEPHONE NUMBER
AT&T Corp/ PEA (Long Distance)	(813) 342-0512
AT&T FLORIDA	(407) 273-5084
BRIGHT HOUSE NETWORKS, LLC	(407) 532-8509
CENTURY LINK (f/k/a EMBARQ FLORIDA)	(407) 830-3650
CITY OF WINTER PARK	(407) 559-3240
PROGRESS ENERGY (TRANSMISSION)	(407) 942-9243
PROGRESS ENERGY (DISTRIBUTION)	(407) 942-9421
TECO PEOPLES GAS	(407) 420-2678
T W TELECOM	(407) 215-6895
VERIZON BUSINESS	(407) 541-2083

THE FOLLOWING LIST OF UTILITY COMPANIES HAVE FACILITIES WITHIN THE PROJECT LIMITS. IT HAS BEEN DETERMINED THAT NO RELOCATION IS ANTICIPATED BY THE FOLLOWING COMPANIES FOR THIS PROJECT:

UTILITY AGENCY OWNER	TELEPHONE NUMBER
AT&T Corp/ PEA (Long Distance)	(813) 342-0512
AT&T FLORIDA	(407) 273-5084
BRIGHT HOUSE NETWORKS, LLC	(407) 532-8509
CENTURY LINK (f/k/a EMBARQ FLORIDA)	(407) 830-3650
PROGRESS ENERGY (TRANSMISSION)	(407) 942-9243
PROGRESS ENERGY (DISTRIBUTION)	(407) 942-9421
T W TELECOM	(407) 215-6895
VERIZON BUSINESS	(407) 541-2083

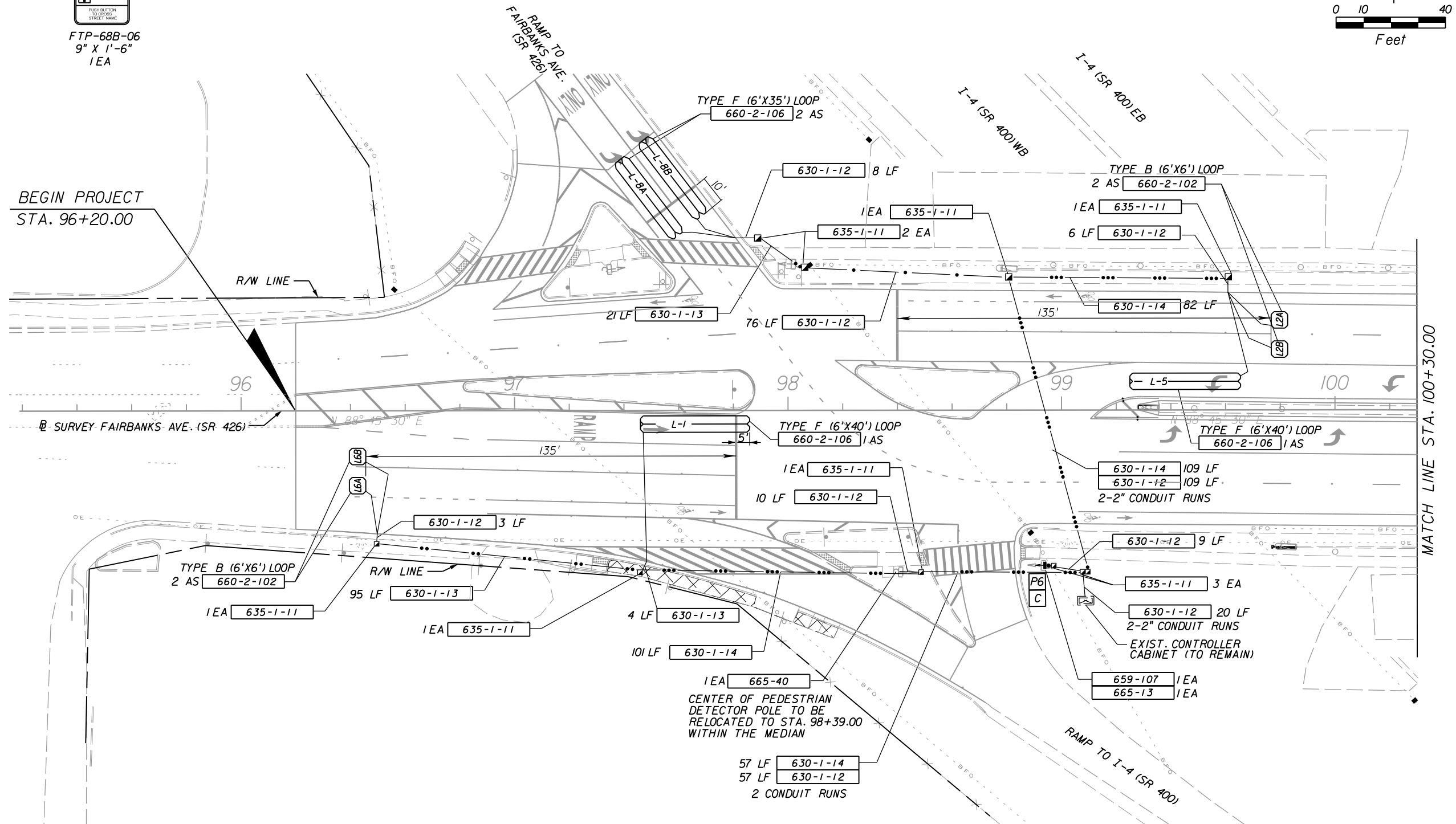
R E V I S I O N S						Engineer of Record: DeeAngela R. Tjikueni P.E. License No.: 68301 CH2M HILL 225 E. ROBINSON STREET SUITE 505 ORLANDO, FL 32801-4322 CERTIFICATE OF AUTHORIZATION NO. 000072	CITY OF WINTER PARK			GENERAL NOTES	SHEET NO.
DATE	BY	DESCRIPTION	DATE	BY	DESCRIPTION		ROAD NO.	COUNTY	CITY PROJECT NO.		T-4
							SR 426	ORANGE	2010-01		

653-191 / AS

A diagram of a pedestrian crossing button. At the top, a square box contains the letter 'C'. Below this is a rectangular button with a black border. The button is divided into four horizontal sections. The top section contains a black silhouette of a person walking and the text 'START CROSSING' and 'Watch For Vehicles'. The second section contains a black silhouette of a hand pressing a button and the text 'DON'T START' and 'Finish Crossing If Started'. The third section contains a black silhouette of a clock face and the text 'TIME REMAINING' and 'To Finish Crossing'. The bottom section contains a black silhouette of a hand pressing a button and the text 'DONT CROSS'. At the very bottom of the button, the text 'PUSH BUTTON TO CROSS' and 'STREET NAME' is visible.

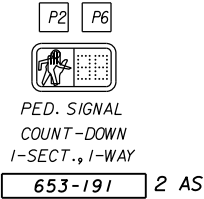
FTP-68B-06
9" X 1'-6"
1 EA

EXISTING SIGNAL EQUIPMENT TO BE REMOVED	
PAY ITEM NO.	QUANTITY
690-20 (PED SIGNAL)	1 EA
690-70 (PED DETECTION ASSEM.)	1 EA
690-100 (SIGNAL EQUIPMENT MISC.)	1 PI

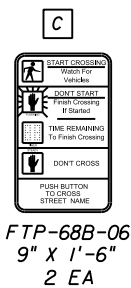


R E V I S I O N S						Engineer of Record: DeeAngela R. Tjikueni P.E. License No.: 68301 CH2M HILL 225 E. ROBINSON STREET SUITE 505 ORLANDO, FL 32801-4322 CERTIFICATE OF AUTHORIZATION NO. 000072	CITY OF WINTER PARK			SIGNALIZATION PLAN I-4 (SR 400) WB RAMPS	SHEET NO.
DATE	BY	DESCRIPTION	DATE	BY	DESCRIPTION		ROAD NO.	COUNTY	CITY PROJECT NO.		T-5
							SR 426	ORANGE	2010-01		

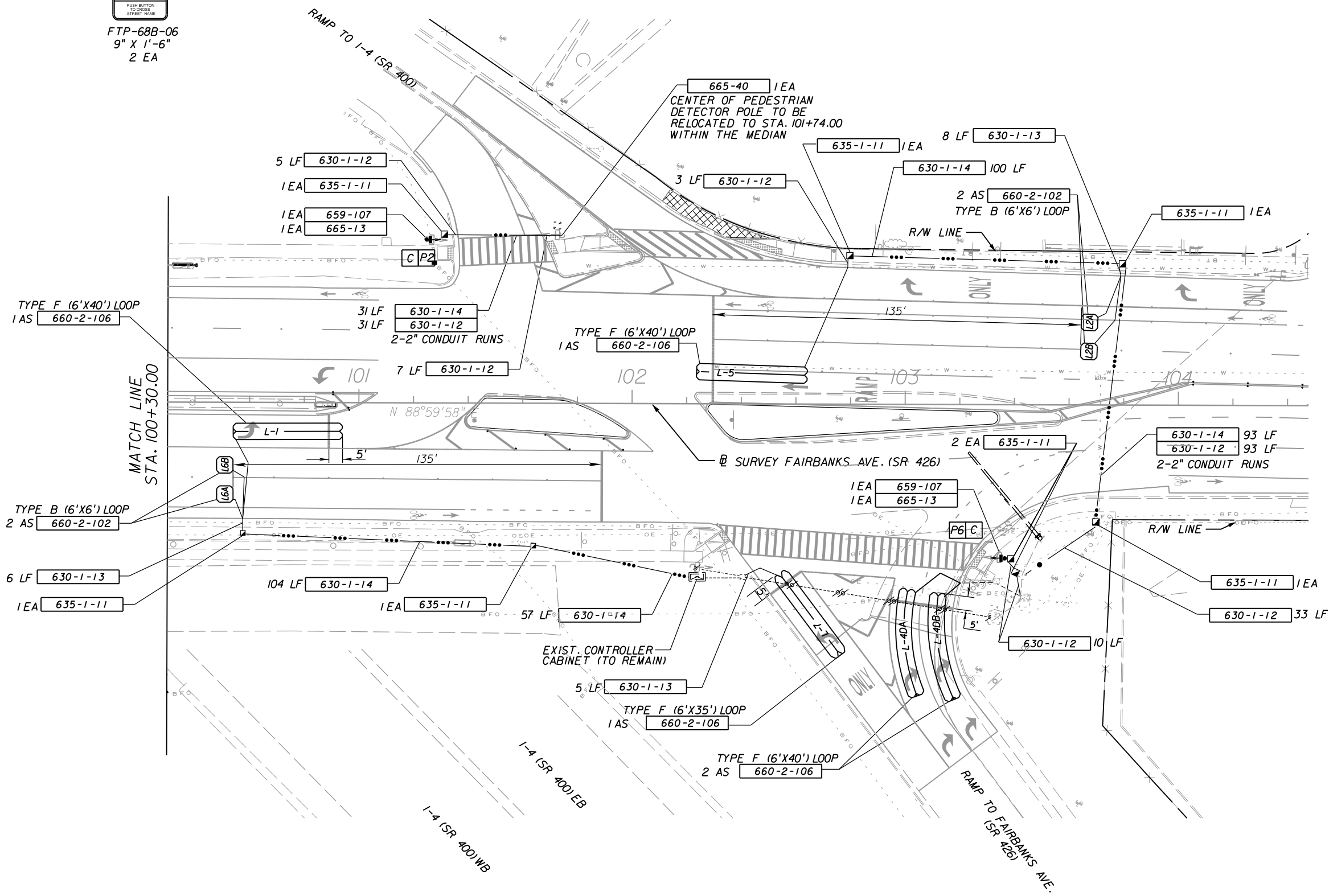
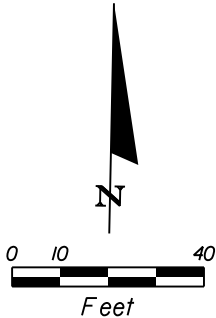
PEDESTRIAN DETAILS



SIGN DETAILS



EXISTING SIGNAL EQUIPMENT TO BE REMOVED	
PAY ITEM NO.	QUANTITY
690-20 (PED SIGNAL)	2 EA
690-70 (PED DETECTION ASSEM.)	2 EA
690-100 (SIGNAL EQUIPMENT MISC.)	1 PI



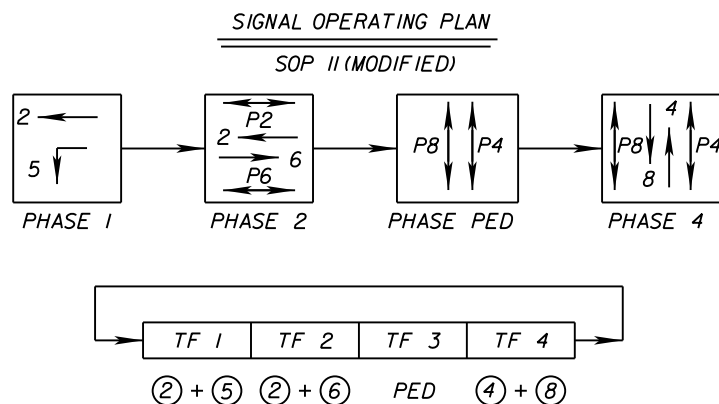
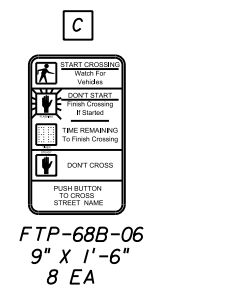
REVISIONS					
DATE	BY	DESCRIPTION	DATE	BY	DESCRIPTION

Engineer of Record: DeeAngela R. Tjikueni
P.E. License No.: 68301
CH2M HILL
225 E. ROBINSON STREET
SUITE 505
ORLANDO, FL 32801-4322
CERTIFICATE OF AUTHORIZATION NO. 000072

CITY OF WINTER PARK		
ROAD NO.	COUNTY	CITY PROJECT NO.
SR 426	ORANGE	2010-01

SIGNALIZATION PLAN	
I-4 (SR 400) EB RAMP	

SHEET NO.
T-6

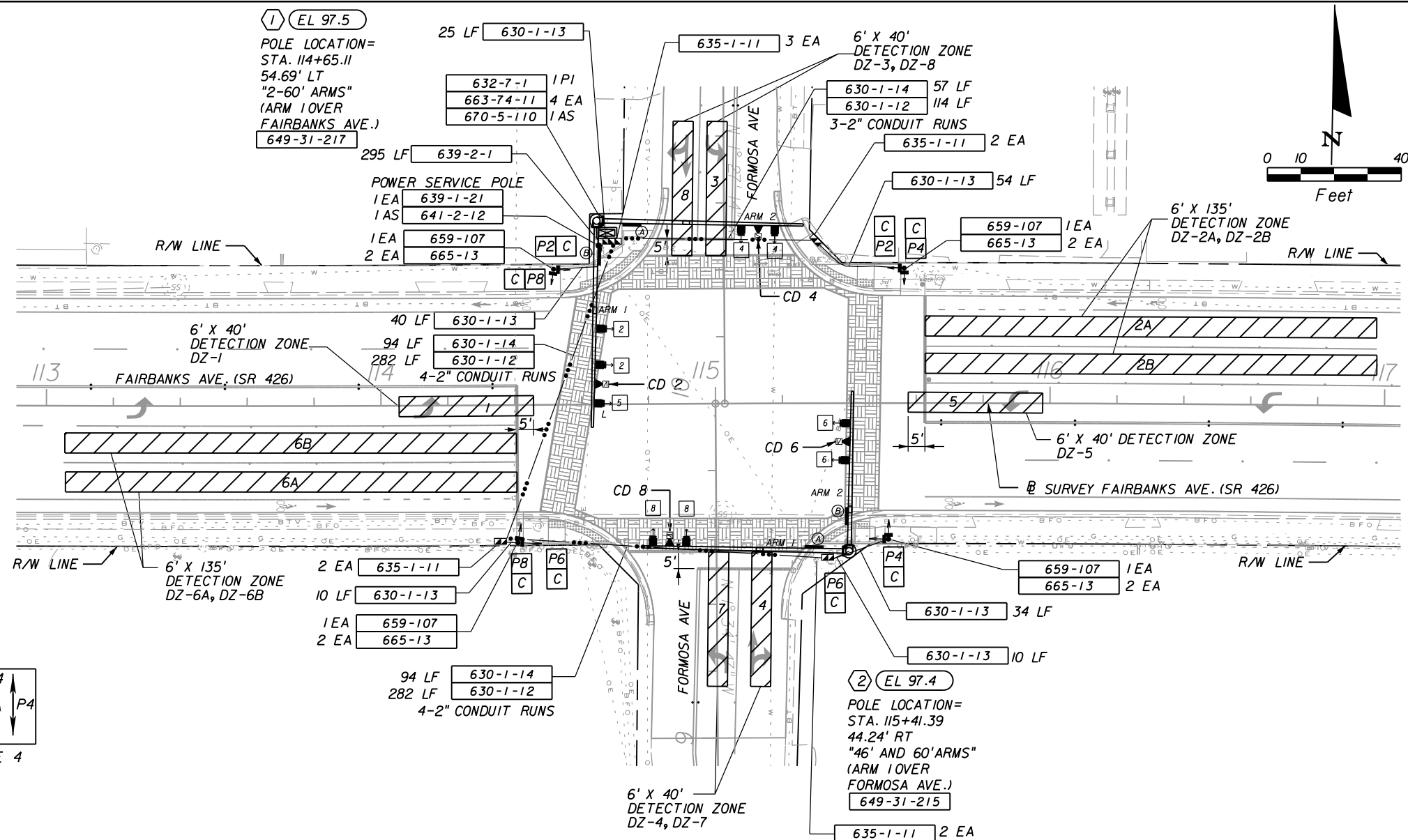


CONTROLLER TIMINGS							
TIMING FUNCTION		TF1&2	TF4	TF1	TF2	TF4	TF3
MOVEMENT NUMBER		2	4	5	6	8	PED
TIMING FUNCTION	MINIMUM GREEN	12	6	6	12	6	
	MAXIMUM GREEN	50	15	30	50	15	
	EXTENSION	0.5	3.5	3.5	0.5	3.5	
	YELLOW CLEARANCE	4	4	4	4	4	4
	ALL RED	2	2	2	2	2	
	PEDESTRIAN WALK	7	7	-	7	7	4
	PED. CLEARANCE	18	25	-	18	25	
	RECALL	MIN	OFF	OFF	MIN	OFF	OFF
DETECTION FUNCTION		L	NL	NL	L	NL	NL
FLASH OPERATION		Y	R	R	Y	R	

TIMINGS ARE INITIAL AND MAY REQUIRE FIELD
ADJUSTING AS DIRECTED PROJECT ENGINEER.

NOTES:

1. MAJOR STREET IS FAIRBANKS AVENUE (SR 426).
THE POSTED SPEED LIMIT IS 35 MPH.
2. THE MINOR STREET IS FORMOSA AVENUE.
3. PEDESTRIAN SIGNAL LED'S SHALL BE FULL MAN AND
FULL HAND OVERLAY, COUNTDOWN TYPE.
4. CONTROLLER BASE SHALL BE THE SAME ELEVATION AS
CENTERLINE OF FAIRBANKS AVENUE OR GREATER.
5. SEE SHEET T-12 FOR ADDITIONAL INFORMATION ON THE
MAST ARMS AND UTILITY CONFLICTS.



EXISTING SIGNAL EQUIPMENT TO BE REMOVED	
PAY ITEM NO.	QUANTITY
690-10 (SIGNAL HEADS)	5 EA
690-20 (PED SIGNAL)	2 EA
690-32-1 (CONC POLES)	2 EA
690-50 (CONTROLLER ASSEM.)	1 EA
690-60 (VEHICLE DETEC)	10 EA
690-70 (PED DETECTION ASSEM.)	2 EA
690-80 (SPAN WIRE)	1 EA
690-90 (CONDUIT & CABLE)	1 PI

VIDEO DETECTION ASSIGNMENT			
VIDEO DETECTOR	DETECTION ZONES	# OF ZONES	DELAY TIME (SEC)
CD 2	DZ-2A, 2B, 5	3	
CD 4	DZ-7, DZ-4	2	5
CD 6	DZ-6A, 6B, 1	3	
CD 8	DZ-3, DZ-8	2	5

DELAY TIME IS INITIAL AND MAY REQUIRE ADJUSTING

R E V I S I O N S						Engineer of Record: DeeAngela R. Tjikueni P.E. License No.: 68301 CH2M HILL 225 E. ROBINSON STREET SUITE 505 ORLANDO, FL 32801-4322 CERTIFICATE OF AUTHORIZATION NO. 000072	CITY OF WINTER PARK			SHEET NO.
DATE	BY	DESCRIPTION	DATE	BY	DESCRIPTION		ROAD NO.	COUNTY	CITY PROJECT NO.	
							SR 426	ORANGE	2010-01	
							SIGNALIZATION PLAN			T-7
							FAIRBANKS AVE/FORMOSA AVE			

2 4 6 8 5 7

R
Y
G

3-SECT., 1-WAY

650-51-311 7 AS

659-106 21 EA

~~R~~
~~Y~~
~~G~~

4-SECT., 1-WAY

650-51-411 2 AS

659-106 8 EA

Diagram illustrating a standard intersection with two 2-lane approaches (EA) and a center circle 'C'.

Approach 1 (Fairbanks Ave): 10'-0" x 2'-6", 699-1-1 2 EA

Approach 2 (Clay St): 6'-6" x 2'-6", 699-1-1 2 EA

Center Circle: C

PHASE 1

PHASE 2

PHASE 3

PHASE 4

TF 1

TF 2

TF 3

TF 4

$(2) + (5)$

$(2) + (6)$

$(4) + (7)$

$(4) + (8)$

1. MAJOR STREET IS FAIRBANKS AVENUE (SR 426).
THE POSTED SPEED LIMIT IS 35 MPH.
2. THE MINOR STREET IS CLAY STREET.
3. PEDESTRIAN SIGNAL LED'S SHALL BE FULL MAN AND
FULL HAND OVERLAY, COUNTDOWN TYPE.
4. CONTROLLER BASE SHALL BE THE SAME ELEVATION AS
CENTERLINE OF FAIRBANKS AVENUE OR GREATER.
5. SEE SHEET T-12 FOR ADDITIONAL INFORMATION ON THE
MAST ARMS AND UTILITY CONFLICTS.

TIMINGS ARE INITIAL AND MAY REQUIRE FIELD ADJUSTING AS DIRECTED PROJECT ENGINEER.

VIDEO DETECTION ASSIGNMENT			
VIDEO DETECTOR	DETECTION ZONES	# OF ZONES	DELAY TIME (SEC)
CD 2	DZ-2A, 2B, 5	3	
CD 4	DZ-4, DZ-7	2	5
CD 6	DZ-6A, 6B, 1	3	
CD 8	DZ-3, DZ-8	2	5

DELAY TIME IS INITIAL AND MAY REQUIRE ADJUSTING

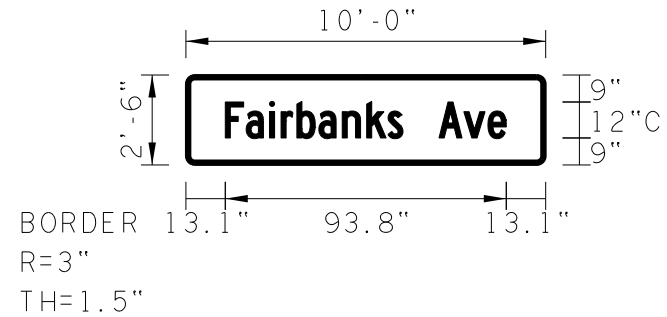
REVISIONS						Engineer of Record: DeeAngela R. Tjikueni P.E. License No.: 68301 CH2M HILL 225 E. ROBINSON STREET SUITE 505 ORLANDO, FL 32801-4322 CERTIFICATE OF AUTHORIZATION NO. 000072	CITY OF WINTER PARK			SIGNALIZATION PLAN FAIRBANKS AVE/CLAY STREET	SHEET NO.
DATE	BY	DESCRIPTION	DATE	BY	DESCRIPTION		ROAD NO.	COUNTY	CITY PROJECT NO.		T-8
							SR 426	ORANGE	2010-01		

SIGN NAME	A	STATION(S)				
QUANTITY	4	1				
WIDTH	10'-0"	2				
HEIGHT	2'-6"	3				
BORDER WIDTH	1.5"	4				
BORDER RADII	3.0"	5				
PANEL COLOR	Blue					
LEGEND	White					
BORDER	White					
SYMBOL(S)	ANGLE	X	Y	WID	HT	
SIGN NUMBER	CLEARANCE EDGE OF LANE	COLUMN SIZE			AVERAGE LENGTH	

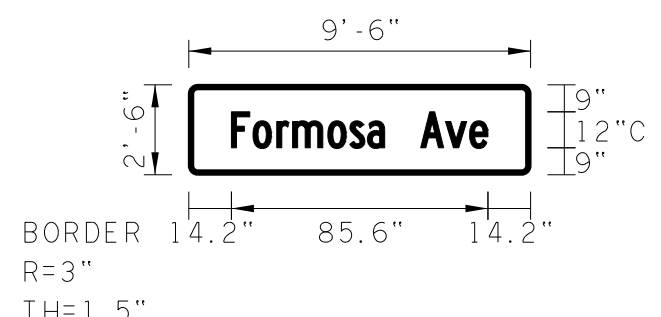
BORDER 13.1" 93.8" 13.1"
R=3"
TH=1.5"

SIGN NAME	B	STATION(S)				
QUANTITY	2	1				
WIDTH	9'-6"	2				
HEIGHT	2'-6"	3				
BORDER WIDTH	1.5"	4				
BORDER RADII	3.0"	5				
PANEL COLOR	Blue					
LEGEND	White					
BORDER	White					
SYMBOL(S)	ANGLE	X	Y	WID	HT	
SIGN NUMBER	CLEARANCE EDGE OF LANE	COLUMN SIZE			AVERAGE LENGTH	

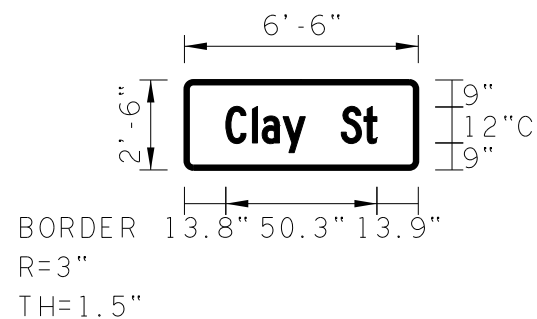
BORDER 14.2" 85.6" 14.2"
R=3"
TH=1.5"



SIGN NAME	B	STATION(S)			
QUANTITY	2	1			
WIDTH	9'-6"	2			
HEIGHT	2'-6"	3			
BORDER WIDTH	1.5"	4			
BORDER RADII	3.0"	5			
PANEL COLOR	Blue				
LEGEND	White				
BORDER	White				
SYMBOL(S)	ANGLE	X	Y	WID	HT
SIGN NUMBER	CLEARANCE EDGE OF LANE	COLUMN SIZE		AVERAGE LENGTH	

[illegible][illegible]

SIGN NAME		E		STATION(S)		
QUANTITY		2		1		
WIDTH		6'-6"		2		
HEIGHT		2'-6"		3		
BORDER WIDTH		1.5"		4		
BORDER RADII		3.0"		5		
PANEL COLOR		Blue				
LEGEND		White				
BORDER		White				
SYMBOL(S)		ANGLE	X	Y	WID	HT
SIGN NUMBER		CLEARANCE EDGE OF LAKE		COLUMN SIZE		AVERAGE LENGTH

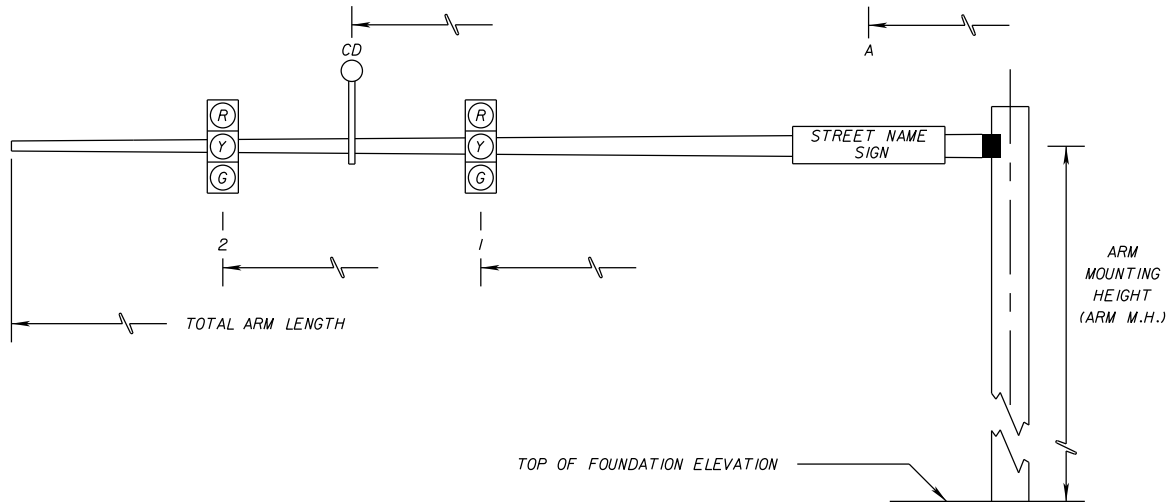
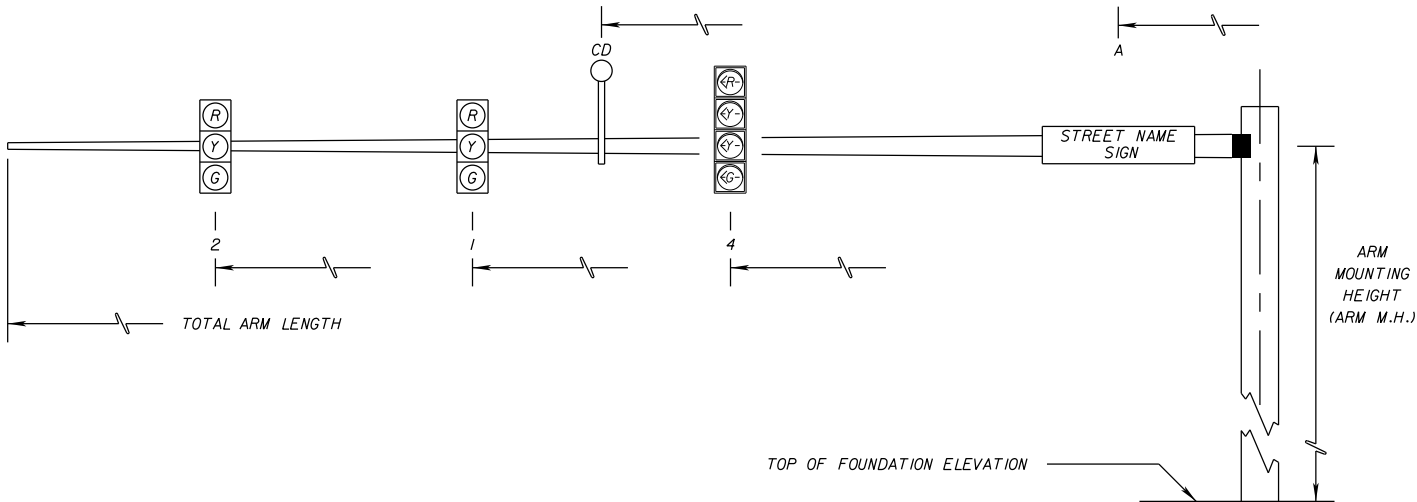
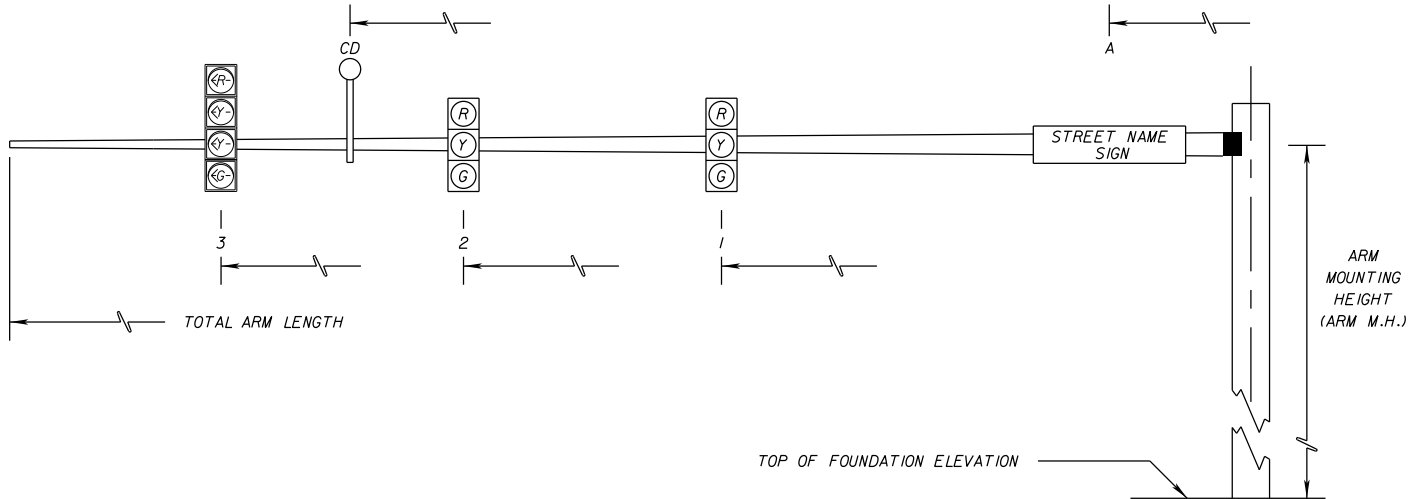


SIGN NAME		STATION(S)			
QUANTITY		1			
WIDTH		2			
HEIGHT		3			
BORDER WIDTH		4			
BORDER RADII		5			
PANEL COLOR					
LEGEND					
BORDER					
SYMBOL(S)	ANGLE	X	Y	WID	HT
SIGN NUMBER	CLEARANCE EDGE OF LANE	COLUMN SIZE		AVERAGE LENGTH	

[illegible][illegible]

<i>R E V I S I O N S</i>						Engineer of Record: DeeAngela R. Tjikuene P.E. License No.: 68301 CH2M HILL 225 E. ROBINSON STREET SUITE 505 ORLANDO, FL 32801-4322 CERTIFICATE OF AUTHORIZATION NO. 000072	<i>CITY OF WINTER PARK</i>			<i>GUIDE SIGN WORKSHEET</i>	SHEET NO.
DATE	BY	DESCRIPTION	DATE	BY	DESCRIPTION						ROAD NO.
							SR 426	ORANGE	2010-01		

SPECIAL INSTRUCTIONS					
ID NO.	PED. BUTTON		PED. SIGNALS		HANDHOLE LOCATION
3			P2	24	
3			P8	272	
4			P4	0	
4			P6	90	



* DENOTES NUMBER OF SECTIONS IN SIGNAL HEAD ASSEMBLY

						SIGNAL DATA															SIGN / DETECTOR DATA																			
ID NO.	SHEET NO.	LOCATION BY STA.	TOP OF FOUNDATION ELEVATION	RDWY ARM NO.	CROWN ELEV.	SIGNAL V/H	BACK PLATES Y/N	PED. SIGNAL Y/N	DISTANCE FROM POLE								TOTAL ARM LENGTH	ARM M.H.	∠ BETWEEN DUAL ARMS 90/270	DISTANCE FROM POLE / HEIGHT AND WIDTH OF SIGN																PAINT COLOR				
									1	*	2	*	3	*	4	*				5	*	A	HI	WI														CD		
**	1		114+65.11	97.5	1	98.3	V	Y	N	32.3'	3	43.1'	3	54.6'	4				60.0'	21.5'	90°	10.5'	2.5	9.5													48.8'	BLACK		
					2	97.1	V	Y		43.3'	3	53.2'	3						60.0'	21.5'		10.5'	2.5	10													48.3'			
					2	97.1	V	Y				53.2'	3			42.0'	5			60.0'	21.5'		10.5'	2.5	10												48.3'			
**	2		115+41.39	97.4	1	97.5	V	Y	N	48.7'	3	58.7'	3						60.0'	21.5'	270°	10.5'	2.5	10													53.7'	BLACK		
					1	97.5	V	Y	N			58.7'	3			47.5'	5			60.0'	21.5'		10.5'	2.5	10												53.7'			
					2	98.2	V	Y		27.2'	3	38.2'	3						46.0'	21.5'		10.5'	2.5	9.5													32.7'			
**					2	98.2	V	Y		21.2'	3	32.2'	3	43.3'	4				46.0'	21.5'		10.5'	2.5	9.5													37.8'			
	3		127+92.32	93.6	1	94.4	V	Y	Y	24.5'	3	35.5'	3	44.0'	4				46.0'	21.5'	90°	10.5'	2.5	6.5													39.7'	BLACK		
					2	93.5	V	Y		35.9'	3	43.9'	3			27.9'	4			46.0'	21.5'		10.5'	2.5	10												31.5'			
**	4		128+51.12	93.9	1	93.8	V	Y	Y	56.2'	3	65.7'	3						70.5'	21.5'	270°	10.5'	2.5	10													61.3'	BLACK		
					1	93.8	V	Y	Y	56.2'	3	65.7'	3			48.0'	4			70.5'	21.5'		10.5'	2.5	10												61.3'			
					2	94.2	V	Y		22.9'	3	33.9'	3						46.0'	21.5'		10.5'	2.5	6.5													28.4'			
**					2	94.2	V	Y		20.6'	3	31.8'	3	43.1'	4				46.0'	21.5'		10.5'	2.5	6.5													38.6'			

** THE EQUIPMENT TYPE/LOCATION SHOWN REFLECTS FUTURE LOADING

R E V I S I O N S						Engineer of Record: DeeAngela R. Tjikueni P.E. License No.: 68301 CH2M HILL 225 E. ROBINSON STREET SUITE 505 ORLANDO, FL 32801-4322 CERTIFICATE OF AUTHORIZATION NO. 000072	CITY OF WINTER PARK			SHEET NO. T-10	
DATE	BY	DESCRIPTION			DATE		BY	DESCRIPTION			
							ROAD NO.	COUNTY	CITY PROJECT NO.	MAST ARM TABULATION	
							SR 426	ORANGE	2010-01		

STANDARD MAST ARM ASSEMBLIES DATA TABLE																		
STRUCTURE ID NUMBERS	ASSEMBLY NUMBERS ⁽¹⁾	FIRST ARM			SECOND ARM			UF (deg)	LL (deg)	POLE				SPECIAL DRILLED SHAFT ⁽⁴⁾				GROUT PAD
		ARM TYPE	FAA ⁽²⁾ (ft.)	FBA ⁽²⁾ (in.)	ARM TYPE	FAA ⁽²⁾ (ft.)	FBA ⁽²⁾ (in.)			POLE TYPE	UAA ⁽³⁾ (ft.)	UB (ft.)	UCA ⁽³⁾ (in.)	DA (ft.)	DB (ft.)	RA	RB	
																		Y/N
1	E5-E5-T4	E5			E5			90		T4	23	21.5	18.78					N
2	E5-E4-T4	E5			E4			270		T4	23	21.5	18.78					N
3	E4-E4-T3	E4			E4			90		T3	23	21.5	15.78					N
4	E6-E4-T4	E6			E4			270		T4	23	21.5	18.78					N

TABLE NOTES:

1. ASSEMBLY NUMBER LEGEND

SINGLE ARM:
ARM TYPE - POLE TYPE = D# - S#
= E# - T#
= F# - W#

DOUBLE ARM:
FIRST ARM TYPE - SECOND ARM TYPE - POLE TYPE = D# - D# - S#
= E# - E# - T#
= F# - F# - W#

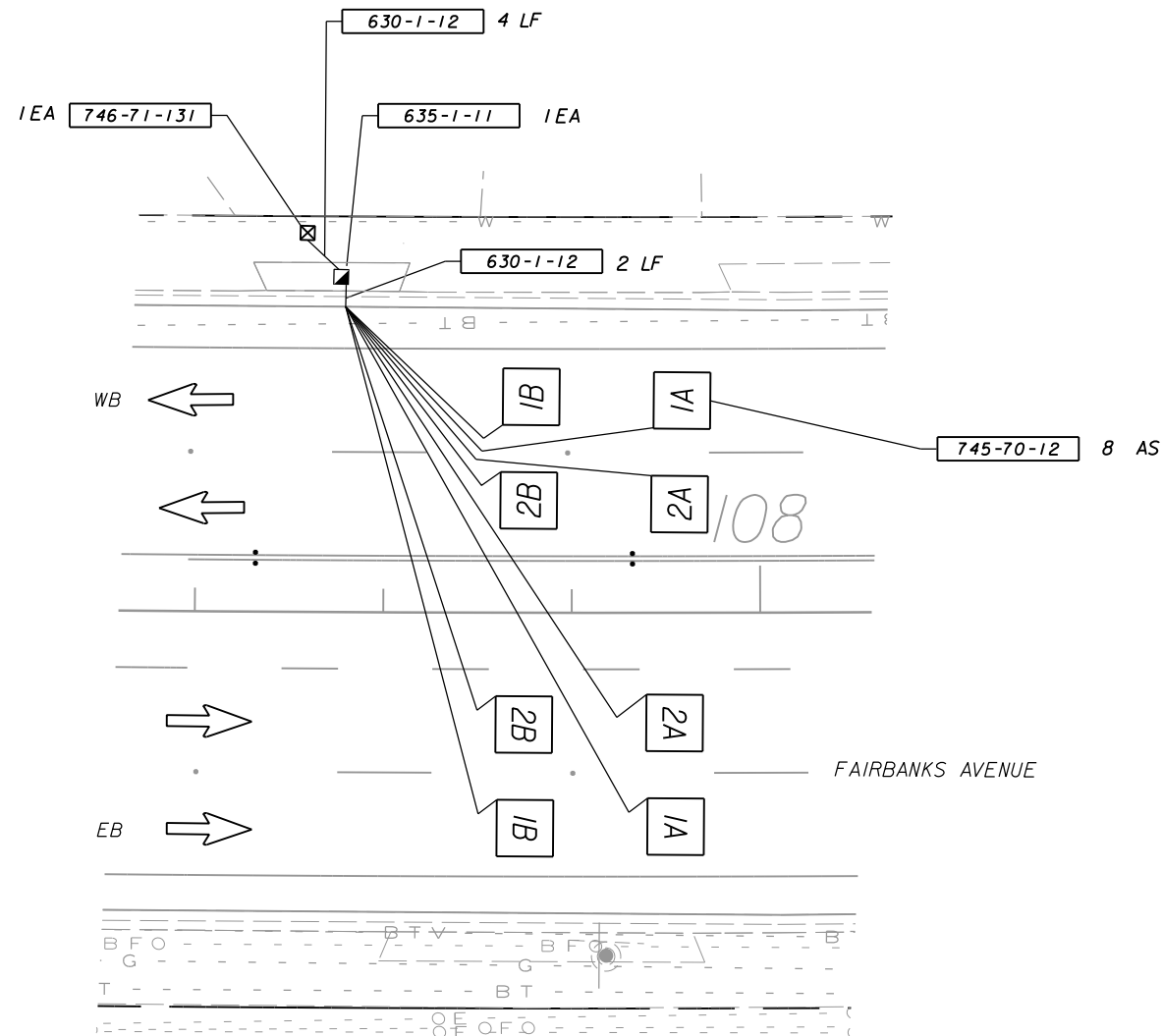
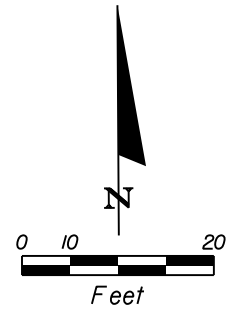
2. IF AN ENTRY APPEARS IN COLUMNS "FAA" AND "FBA", A SHORTER ARM IS REQUIRED. THIS IS OBTAINED BY REMOVING LENGTH FROM THE ARM TIP. FOR THESE CASES THE MAST ARM LENGTH SHALL BE SHORTENED FROM "FA" TO "FAA" AND THE TIP DIAMETER SHALL BE INCREASED FROM "FB" TO "FBA".
3. IF AN ENTRY APPEARS IN COLUMNS "UAA" AND "UCA", A SHORTER POLE IS REQUIRED. THIS IS OBTAINED BY REMOVING LENGTH FROM THE POLE TIP. FOR THESE CASES THE POLE HEIGHT SHALL BE SHORTENED FROM "UA" TO "UAA" AND THE POLE TIP DIAMETER SHALL BE INCREASED FROM "UC" TO "UCA".
4. THE FOUNDATIONS FOR STANDARD MAST ARM ASSEMBLIES ARE PRE-DESIGNED AND ARE BASED UPON THE FOLLOWING CONSERVATIVE SOIL CRITERIA WHICH COVERS THE GREAT MAJORITY OF SOIL TYPES FOUND IN FLORIDA. ONLY COMPLETE THE "SPECIAL DRILLED SHAFT" DATA INFORMATION IF SITE CONDITIONS DICTATE DRILLED SHAFTS WITH ADDITIONAL FOUNDATION CAPACITY.

CLASSIFICATION = COHESIONLESS (FINE SAND)
FRICTION ANGLE = 30 DEGREES (30°)
UNIT WEIGHT = 50 LBS. / CU. FT. (ASSUMED SATURATED)

GENERAL NOTES:

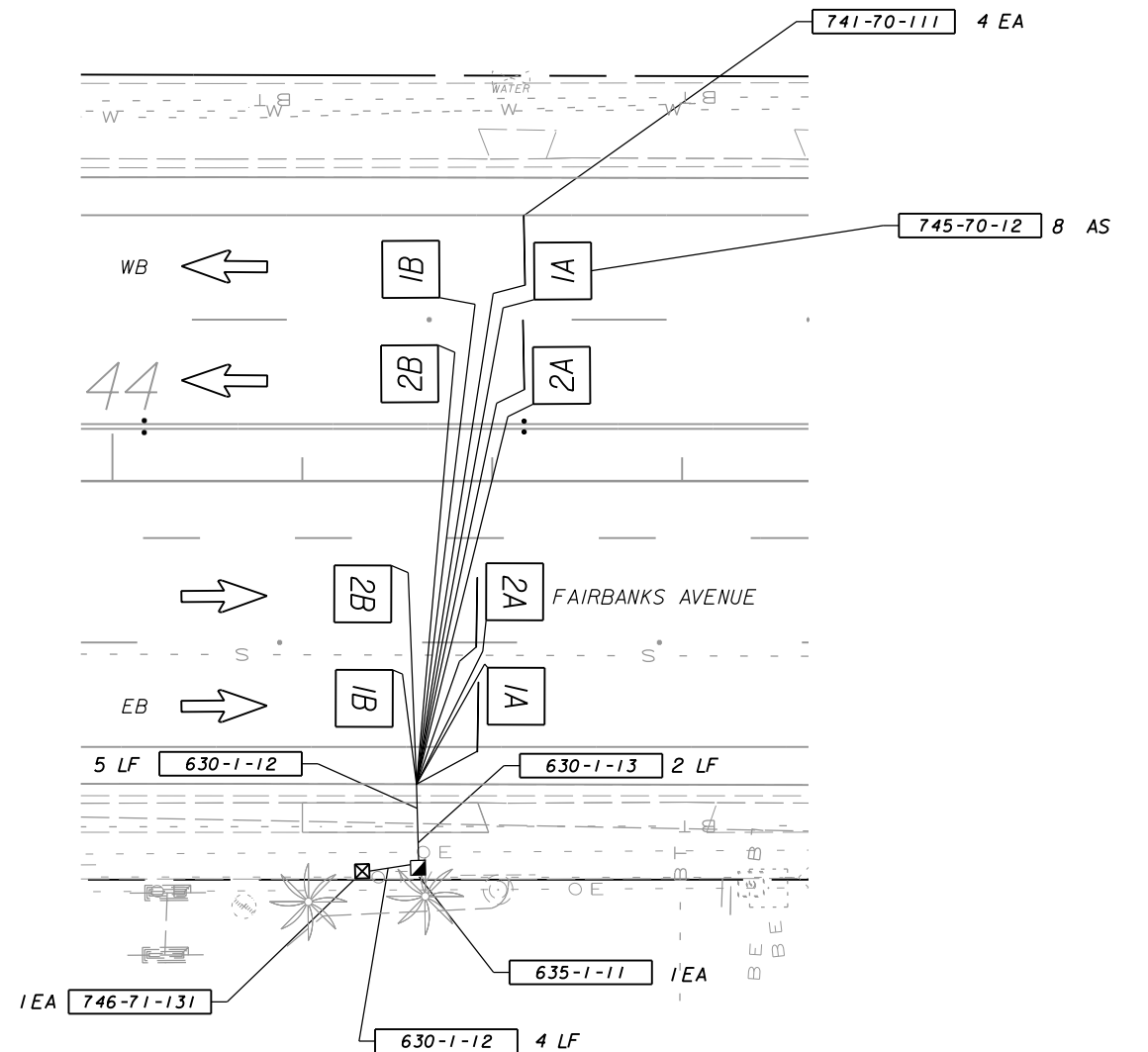
1. WORK THIS SHEET WITH THE SIGNAL DESIGNER'S "MAST ARM TABULATION". SEE "MAST ARM TABULATION" FOR SPECIAL INSTRUCTIONS THAT INCLUDE NON-STANDARD HANDHOLE LOCATION, PAINT COLOR, TERMINAL COMPARTMENT REQUIREMENT, AND PEDESTRIAN FEATURES.
2. WORK WITH INDEX NOS. I7743 AND I7745.
3. WHEN PLACING STANDARD MAST ARM ASSEMBLIES ON EXISTING FOUNDATIONS, REMOVE EXISTING GROUT PAD AND CUT EXISTING ANCHOR BOLTS FLUSH WITH TOP OF FOUNDATION. REPLACE DAMAGED OR REMOVED PORTIONS OF THE FOUNDATION, USING EPOXY BONDING COMPOUND ACCORDING TO SECTION 400 OF THE SPECIFICATIONS. REPLACE GROUT PAD ACCORDING TO SECTION 934 OF THE SPECIFICATIONS.

R E V I S I O N S						Engineer of Record: DeeAngela R. Tjikueni P.E. License No.: 68301 CH2M HILL 225 E. ROBINSON STREET SUITE 505 ORLANDO, FL 32801-4322 CERTIFICATE OF AUTHORIZATION NO. 000072	CITY OF WINTER PARK			STANDARD MAST ARM ASSEMBLIES DATA TABLE	SHEET NO.
DATE	BY	DESCRIPTION	DATE	BY	DESCRIPTION		ROAD NO.	COUNTY	CITY PROJECT NO.		
							SR 426	ORANGE	2010-01		T-II



TRAFFIC MONITORING SITE (TMS): 750585

MILE POST 0.207



TRAFFIC MONITORING SITE (TMS): 750435LP

MILE POST 0.900

R E V I S I O N S						Engineer of Record: DeeAngela R. Tjikueni P.E. License No.: 68301 CH2M HILL 225 E. ROBINSON STREET SUITE 505 ORLANDO, FL 32801-4322 CERTIFICATE OF AUTHORIZATION NO. 000072	CITY OF WINTER PARK			TRAFFIC MONITORING SITES	SHEET NO.
DATE	BY	DESCRIPTION	DATE	BY	DESCRIPTION		ROAD NO.	COUNTY	CITY PROJECT NO.		
							SR 426	ORANGE	2010-01		