

CITY OF WINTER PARK

WATER & WASTEWATER UTILITY DEPARTMENT

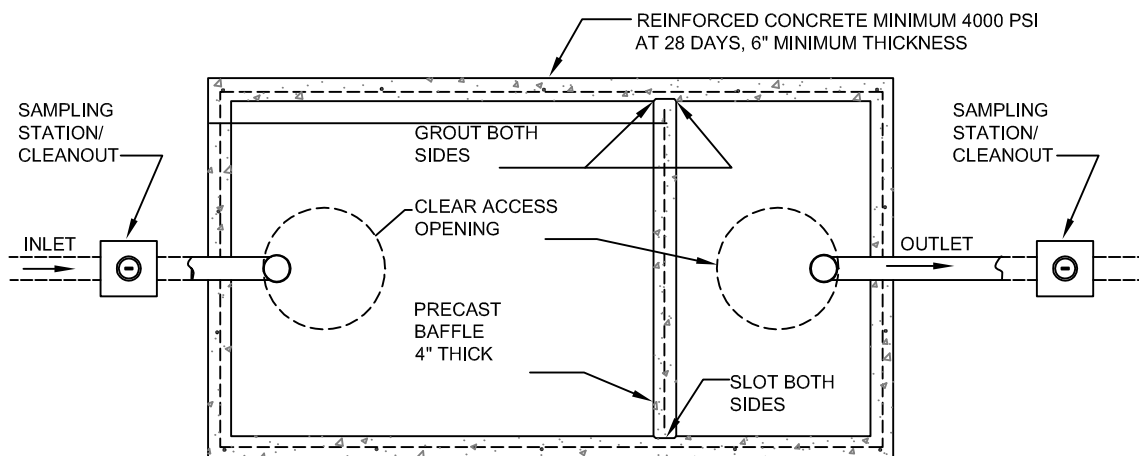
REFERENCE THE "WATER & WASTEWATER UTILITY STANDARDS, SPECIFICATIONS & DETAILS MANUAL"

DATE: JUNE 19, 2009

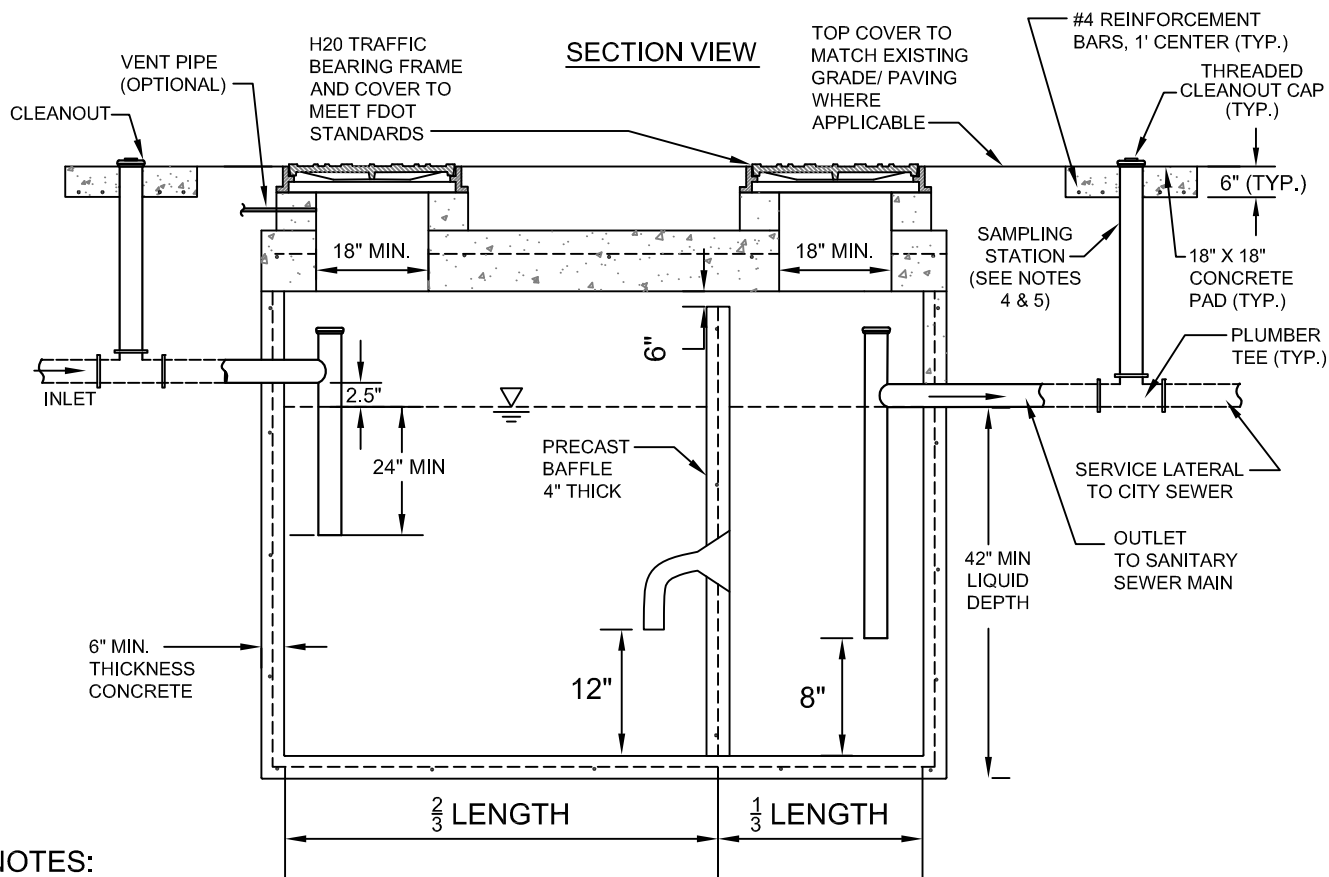
GREASE TRAP W/ SAMPLING STATION

SCALE: N.T.S

PLAN VIEW



SECTION VIEW



NOTES:

1. SIZE OF GREASE TRAP SHALL BE IN ACCORDANCE WITH THE CITY OF WINTER PARK'S SIZING SPECIFICATIONS AND/OR FLORIDA PLUMBING CODE.
2. GRAY WATER ONLY, BLACK WATER SHALL BE CARRIED BY SEPARATE SEWER.
3. GREASE TRAP SHALL BE WATER AND GAS TIGHT.
3. LOADS: H-20 TRUCK WHEELS WITH 30% IMPACT PER AASHTO. TRAFFIC BEARING FRAME AND COVERS TO MEET FDOT STANDARDS IF APPLICABLE
4. SAMPLING STATION CONNECTION MUST BE IN ACCORDANCE WITH THE STANDARD PLUMBING CODES.
5. THE SAMPLING STATION PIPE SHALL BE THE SAME SIZE AS THE DISCHARGE PIPE (MIN. 1 1/2")
6. BAFFLED, CONCRETE TANK IS REQUIRED UNLESS ALTERNATIVE HAS PRIOR APPROVAL.

FIGURE 41