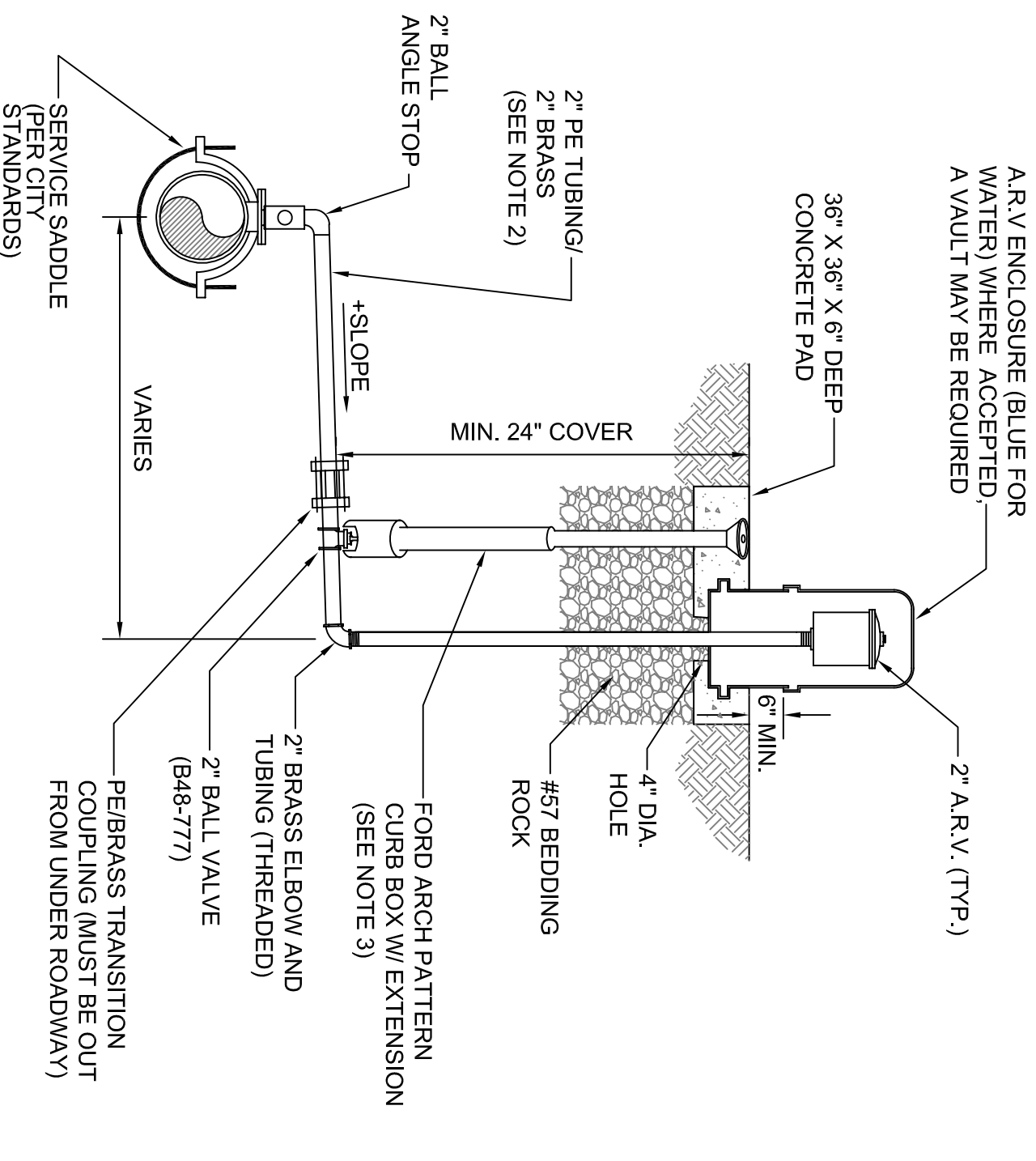
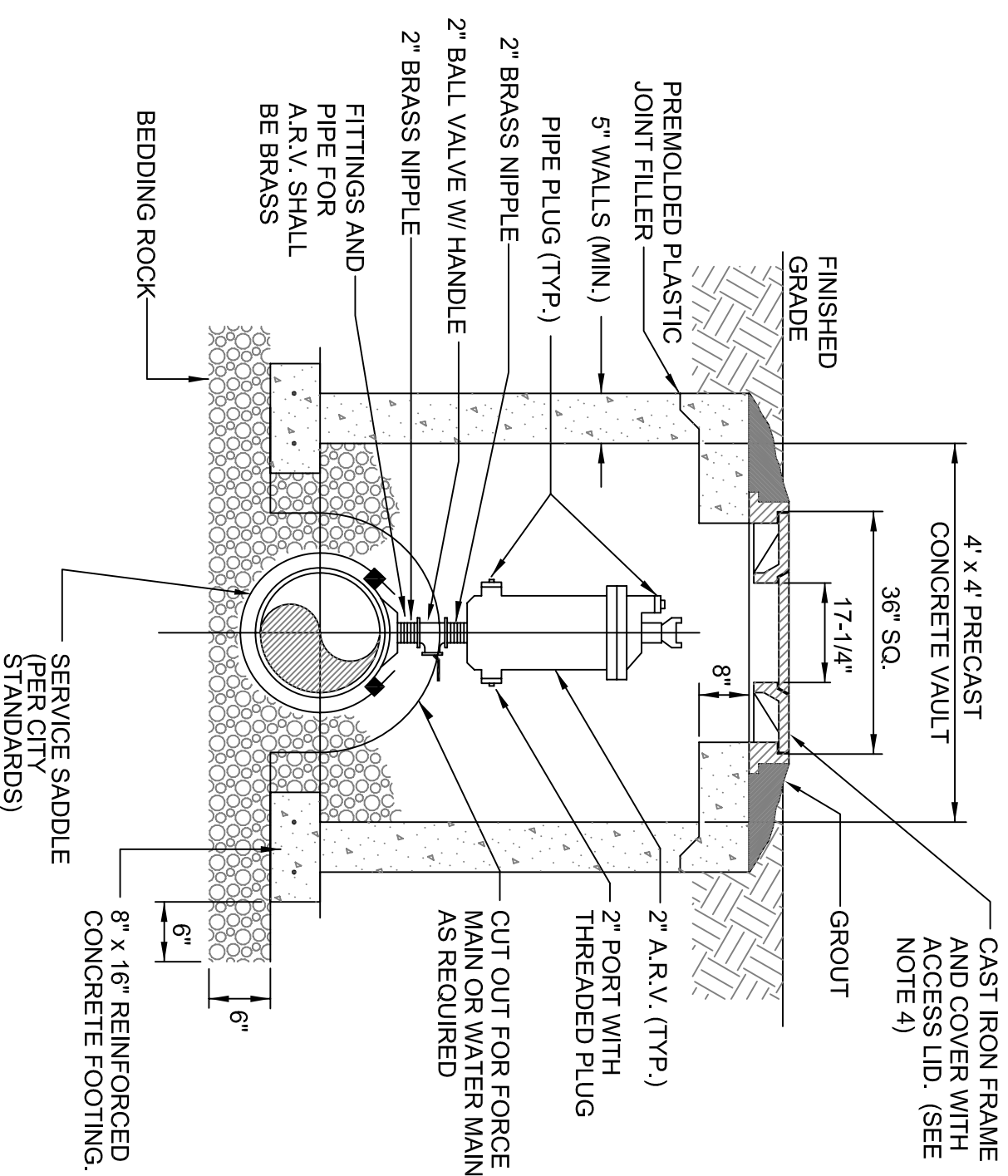


AIR OR COMBINATION AIR/VACUUM RELEASE VALVE-WATER

OFFSET FROM THE WATERMAIN



DIRECTLY SET ON THE WATERMAIN



NOTES:

1. THE ABOVE DETAILS ARE BASED ON 2" COMBINATION AIR/VACUUM RELEASE VALVES. CHANGE PIPE AND FITTINGS ACCORDINGLY FOR OTHER VALVE SIZES AND TYPES. VALVE SIZES TO BE DETERMINED BY THE ENGINEER AND APPROVED BY THE CITY OF WINTER PARK PRIOR TO INSTALLATION.
2. IF OFFSET IS GREATER THAN 6', 2" PE TUBING MUST BE USED. IF OFFSET IS LESS THAN 6' BRASS PIPE MUST BE USED (NO COUPLINGS).
3. SEE FIGURES 1 AND 2 FOR DETAILED SPECIFICATIONS.
4. H-20 LOADING, TRAFFIC RATED LID REQUIRED.

FIGURE 36