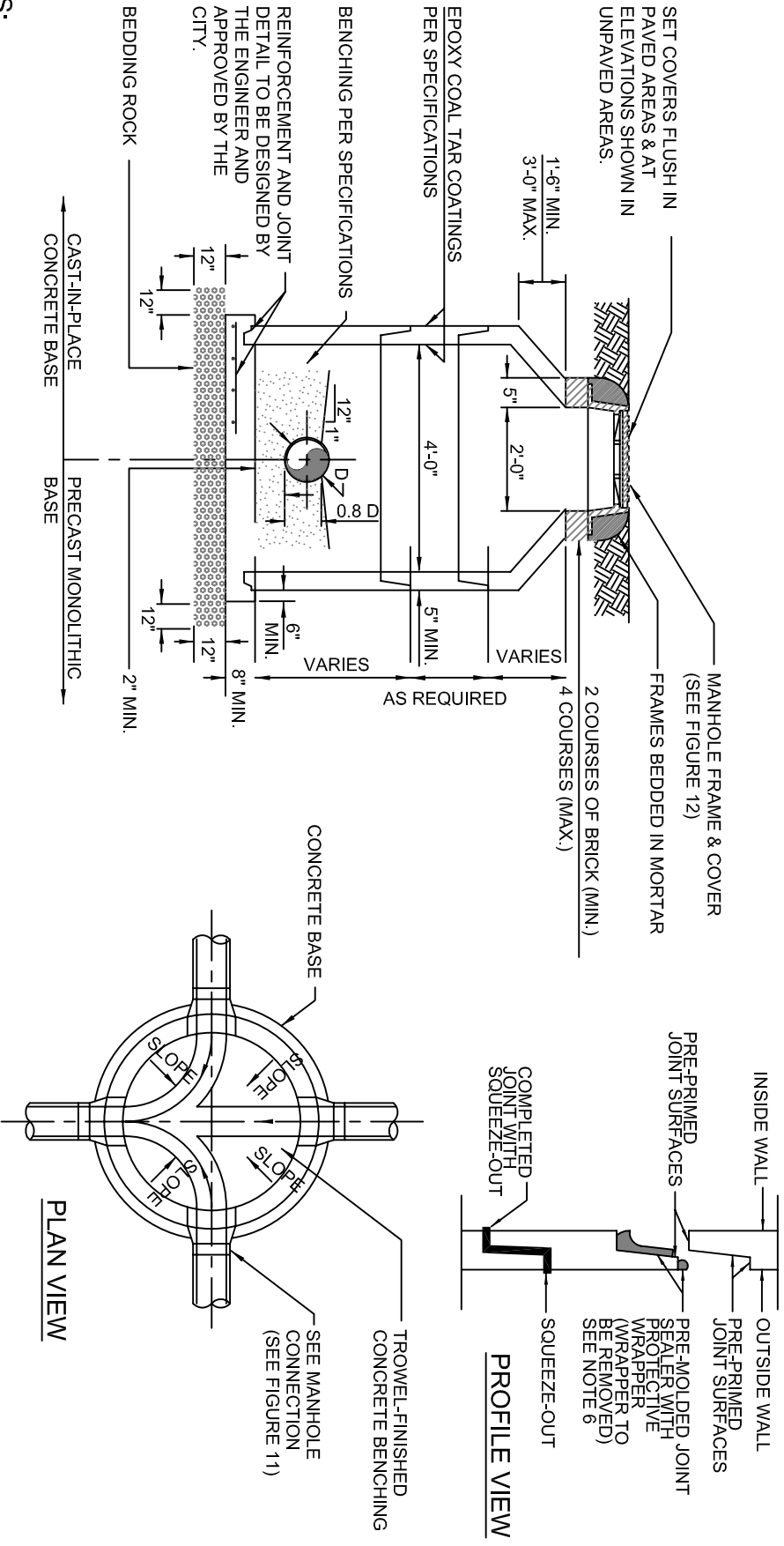


**CITY OF WINTER PARK**  
**WATER & WASTEWATER UTILITY DEPARTMENT**  
**REFERENCE THE "WATER & WASTEWATER UTILITY STANDARDS, SPECIFICATIONS & DETAILS MANUAL"**

**DATE: January 2, 2008**

**PRECAST CONCRETE MANHOLE**

**SCALE: N.T.S.**



- NOTES:**
1. MANHOLE (SHOWN) IS FOR SEWER SIZE 8" THROUGH 24". COMPLY WITH CITY REQUIREMENTS FOR MANHOLES HAVING SEWER SIZES GREATER THAN 24".
  2. DROP CONNECTIONS ARE REQUIRED WHENEVER INVERT OF INFLUENT SEWER IS 24" OR MORE ABOVE THE INVERT OF THE MANHOLE, SEE MANHOLE CONNECTION SPECIFICATIONS, FIGURE 11.
  3. ECCENTRIC CONE DESIGN MAY BE USED AS AN ALTERNATIVE ONLY WITH PRIOR APPROVAL FROM THE UTILITY DEPARTMENT.
  4. CONTRACTOR MUST PERFORM TWO COMPACTION TEST (1' LIFTS) IN THE MANHOLE EXCAVATION AREA. SOIL MUST BE COMPACTED TO 95% MAXIMUM DENSITY OF THE MODIFIED PROCTOR. DENSITY TEST RESULTS ARE TO BE FORWARDED TO THE CITY ENGINEER.
  5. SPECIALIZED LINING MAY BE REQUIRED UNDER SPECIAL CONDITIONS.
  6. CASTING SECTIONS MUST BE ADEQUATELY SEALED WITH APPROVED MATERIAL, RAM NECK OR EQUAL. MUST BE WATER TIGHT.

**FIGURE 13**