

---

# TRANSFORMING PROGRESS POINT

## A COMMUNITY VIRTUAL CHARRETTE



**TRANSFORMING PROGRESS POINT**  
A COMMUNITY VIRTUAL CHARRETTE

**WELCOME !**

**UNDERSTANDING OUR PURPOSE**

**HISTORICAL CONTEXT**

**PLACEMAKING AS A FRAMEWORK**

**COMMUNITY INPUT**

**NEXT STEPS**

## UNDERSTANDING OUR PURPOSE



TRANSFORMING PROGRESS POINT  
A COMMUNITY VIRTUAL CHARRETTE

- Facilitate a public conversation to help shape the transformation of activating city-owned land with a world-class public park and destination as a city gateway to surrounding neighbors, merchants and visitors.
- Build upon initial Commission-led work sessions with citizens, volunteers and professionals that provided a vision framework of possibilities, along with further fact finding and public input to maximize the vision and the value that can be created by activating the land with public space and complimentary uses and events.
- Clearly express Winter Park's quality of life attributes and the unique values and innovative features of Winter Park's extraordinary natural environment and sense of place that can be activated by people, uses and experiences in this location and connect to other City parks and destinations.
- Incorporate public insights into a set of redevelopment guidelines with an action plan for public presentation to the City Commission to review and implement the findings of the recommended redevelopment plan for Progress Point.



# CONNECTING OUR PARKS & GREENWAYS





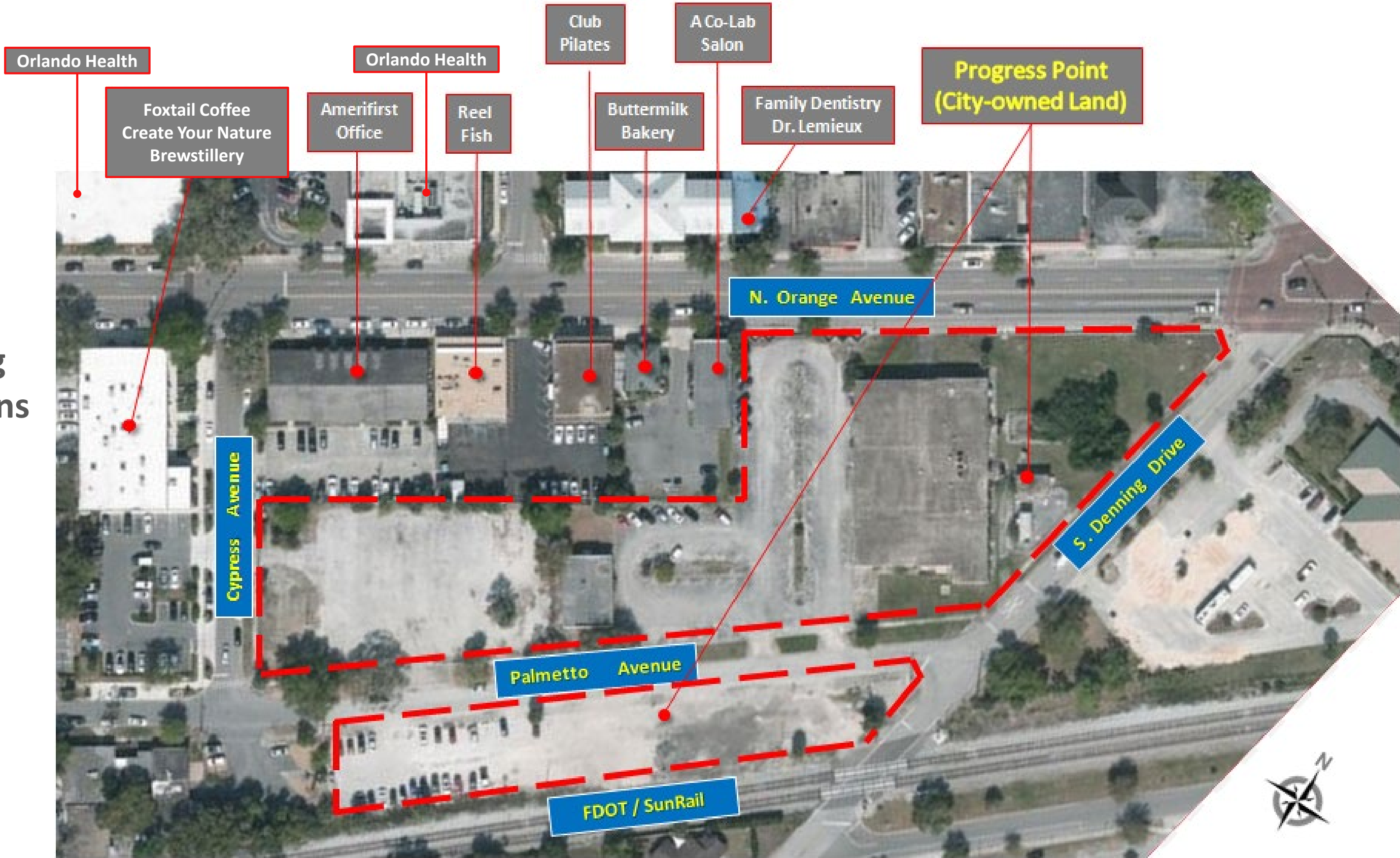
# PROGRESS POINT LOCATION





# PROGRESS POINT - TODAY

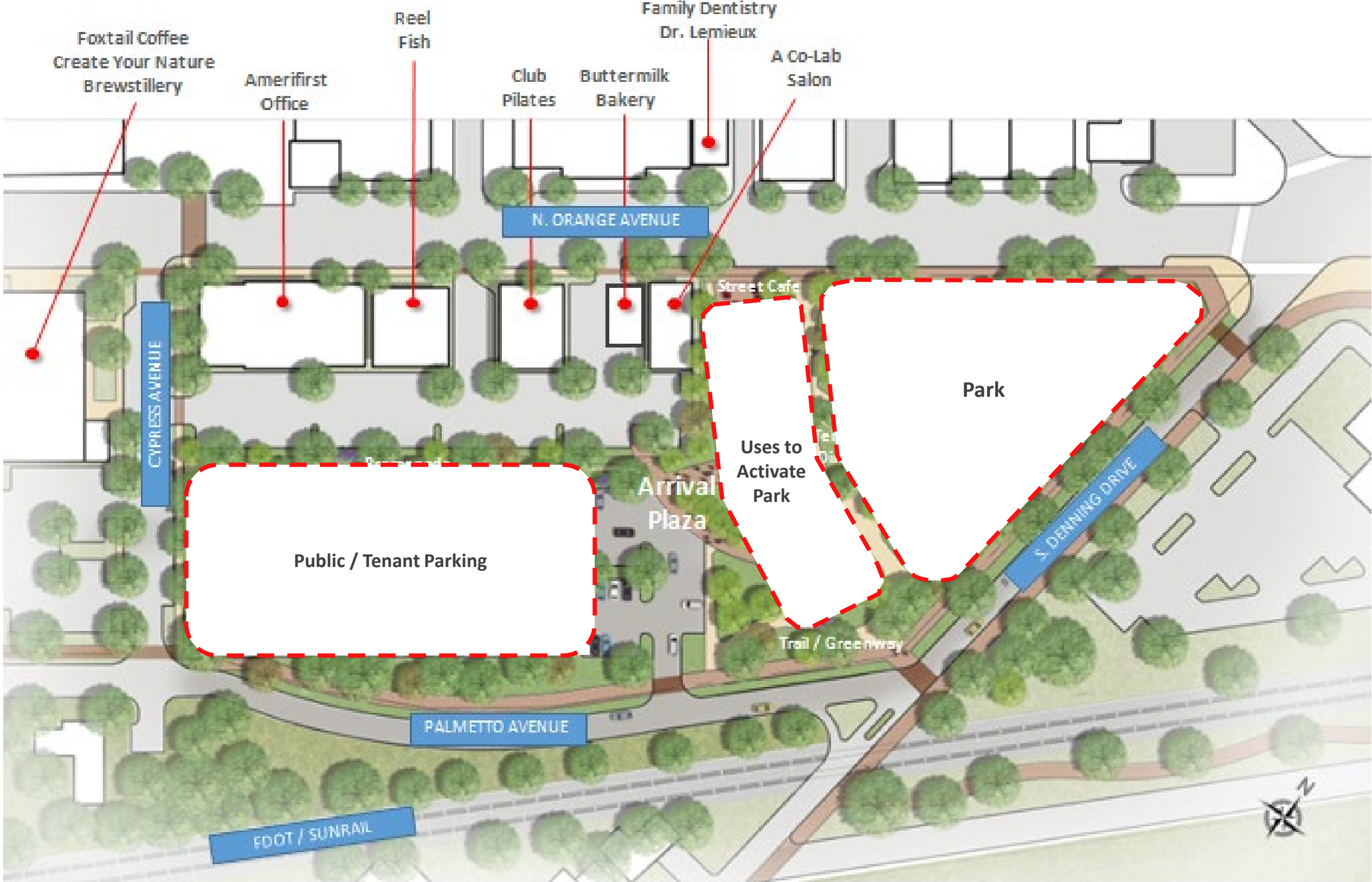
Existing  
Conditions





# EARLY VISION FRAMEWORK POSSIBILITIES

## Commission Work Sessions







TRANSFORMING PROGRESS POINT  
A COMMUNITY VIRTUAL CHARRETTE

WELCOME !

UNDERSTANDING OUR PURPOSE

HISTORICAL CONTEXT

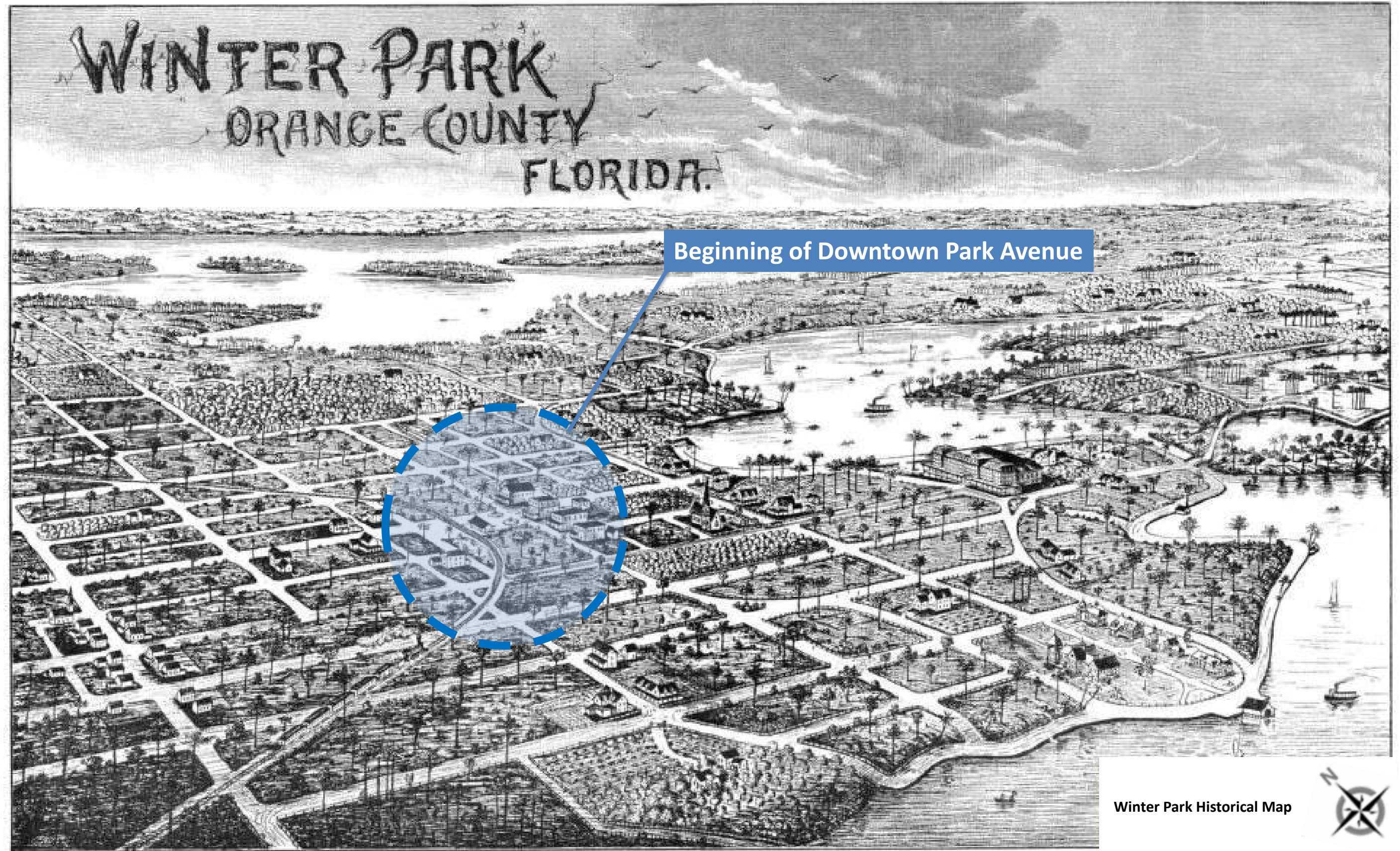
PLACEMAKING AS A FRAMEWORK

COMMUNITY INPUT

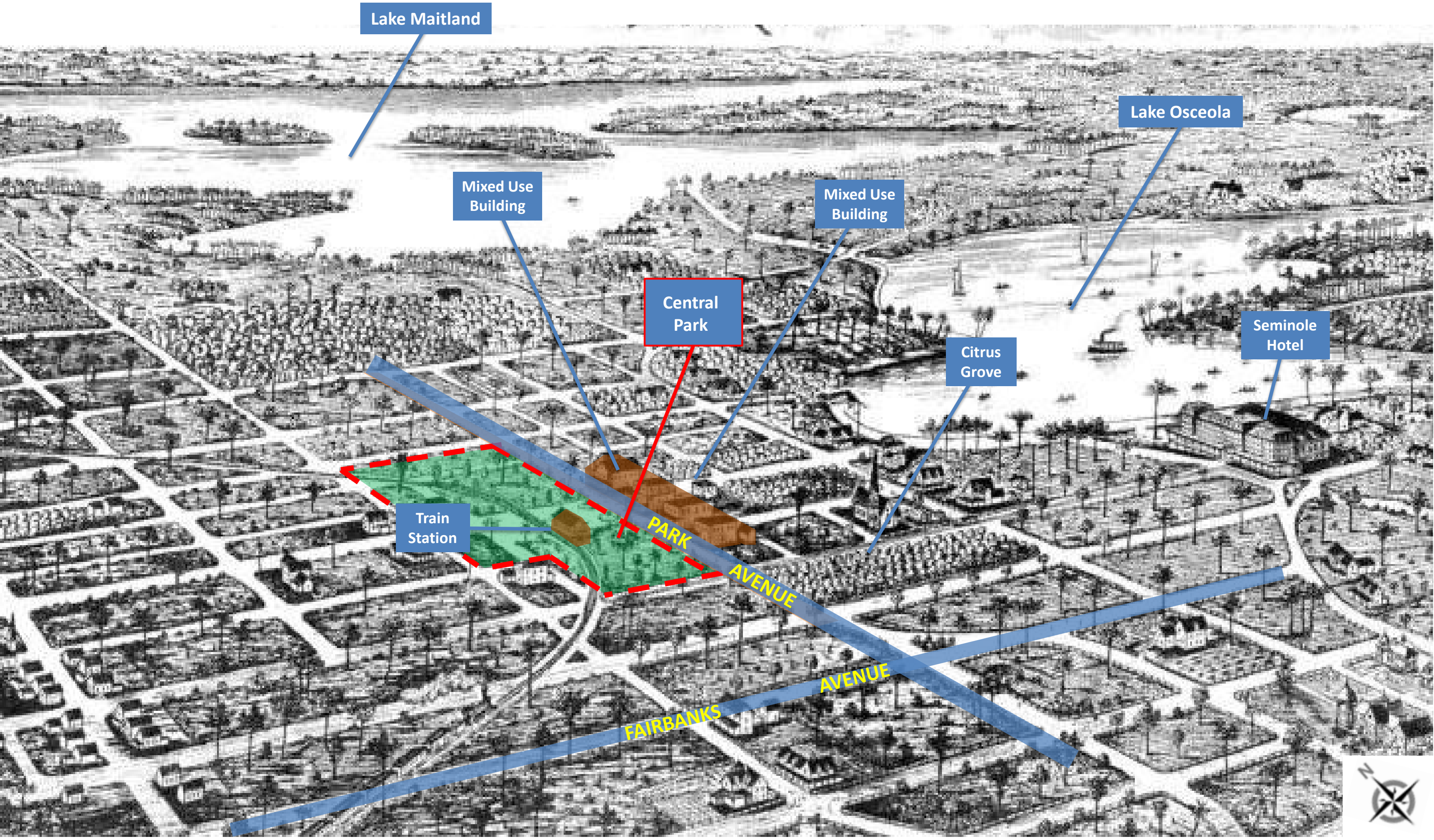
NEXT STEPS



# Circa 1885 Downtown Winter Park



# Circa 1885 Downtown Winter Park



Lake Maitland

Lake Osceola

Mixed Use  
Building

Mixed Use  
Building

Central  
Park

Citrus  
Grove

Seminole  
Hotel

Train  
Station

PARK  
AVENUE  
FAIRBANKS  
AVENUE





# Early Winter Park circa 1900 - 1930





# Today's Central Park

## Under-story View to Park Avenue Village-scale Buildings





## Early View of Progress Point - Orange Ave & South Denning Drive





## Today's View of Progress Point - Orange Ave & South Denning Drive







TRANSFORMING PROGRESS POINT  
A COMMUNITY VIRTUAL CHARRETTE

WELCOME !

UNDERSTANDING OUR PURPOSE

HISTORICAL CONTEXT

**PLACEMAKING AS A FRAMEWORK**

COMMUNITY INPUT

NEXT STEPS



# Placemaking:

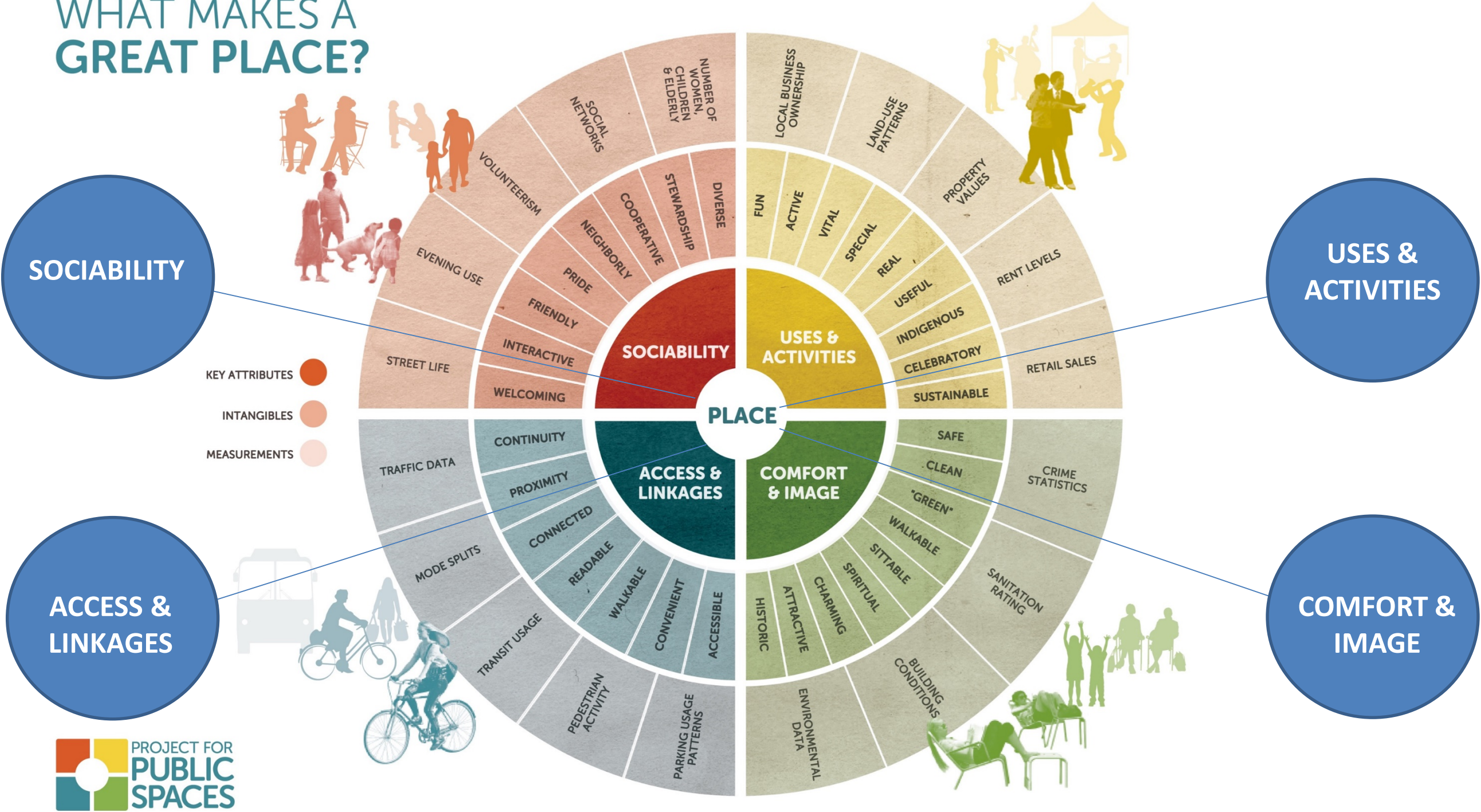
A people-centered approach to reinvigorate the public realm by remaking the relationship between place & economy in ways that generate broad based & locally-led prosperity.

- Brookings Institute



# PLACEMAKING ELEMENTS

WHAT MAKES A GREAT PLACE?





# Winter “Park”





## Promenade - Plaza - Passages





## “Third Place”



Central Green – “Movable Chairs”



Children-at-play



Gathering



## Activating Parks with Civic-Cafes-Food-Shops-Collaborative Space



Multiple Vendors



Uses, Activities and Events





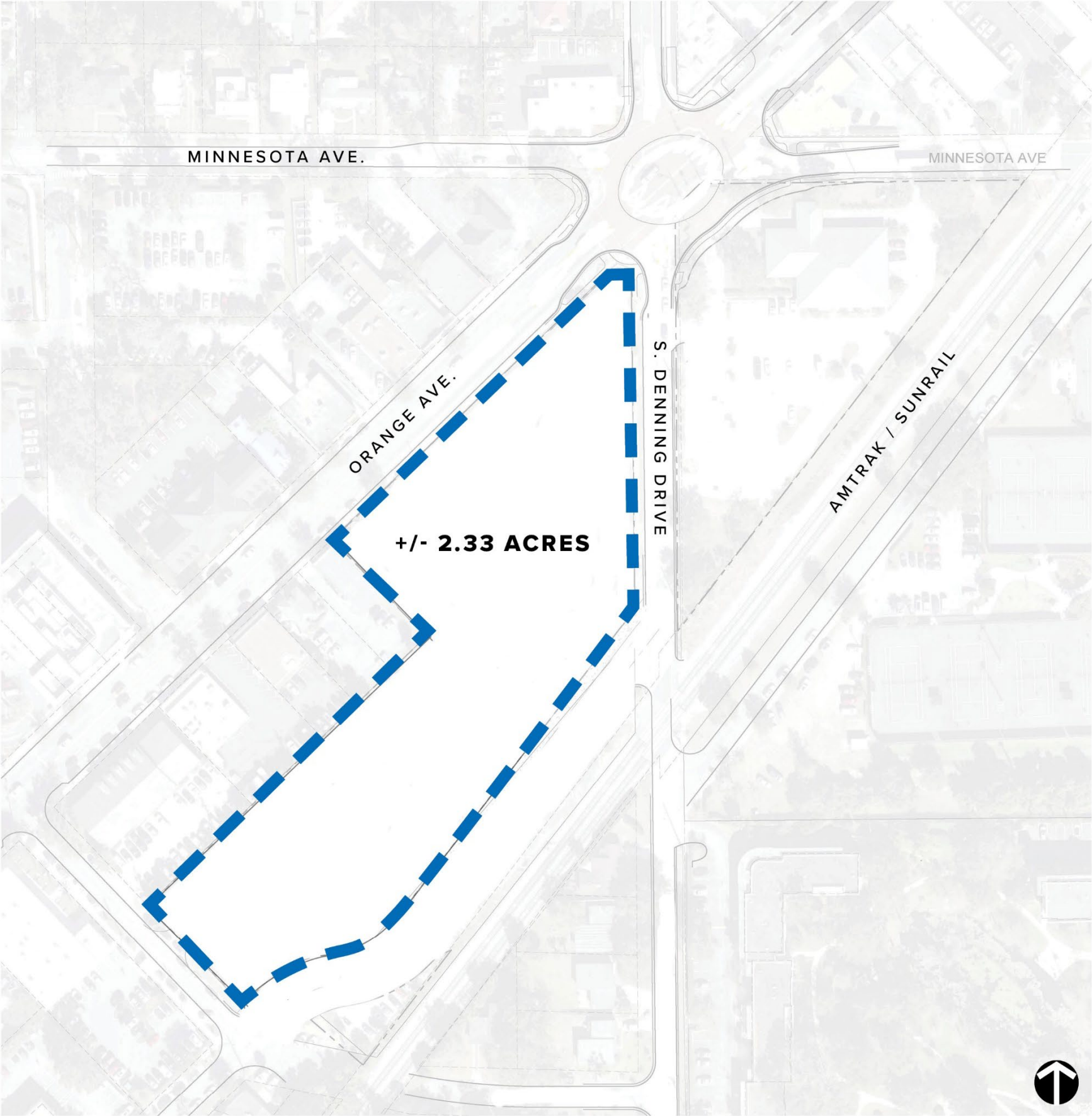
# Rooftops Overlook & Extend Park Experience





SITE ELEMENTS / FRAMEWORK

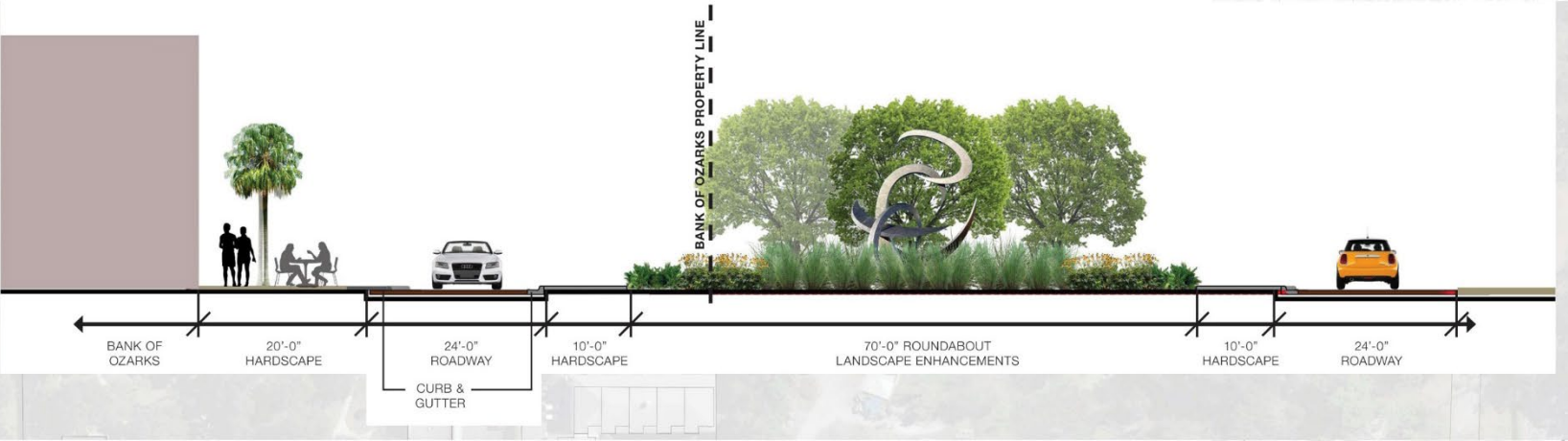
- SITE BOUNDARY



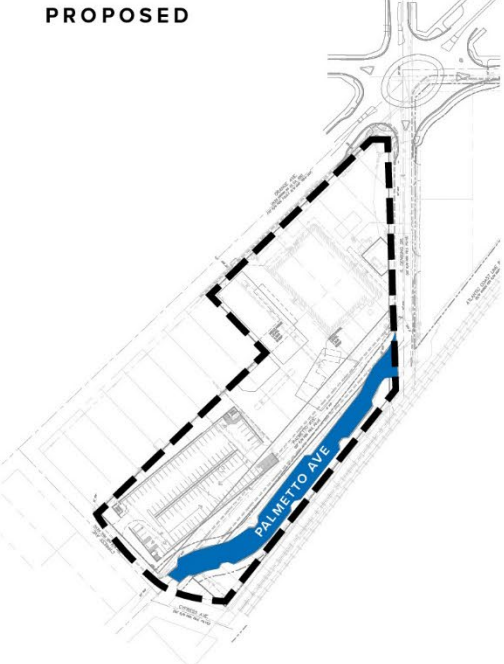
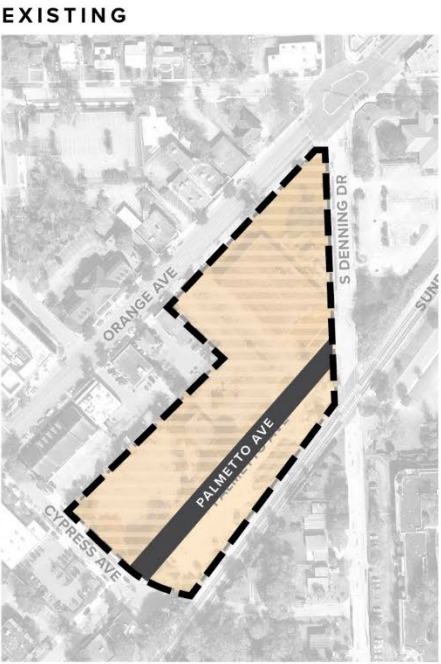


SITE ELEMENTS / FRAMEWORK

- PARK BOUNDARY
- ROADWAY IMPROVEMENTS:
  - ROUNDABOUT ON ORANGE AVE.
  - RE-ALIGNMENT OF PALMETTO AVE.



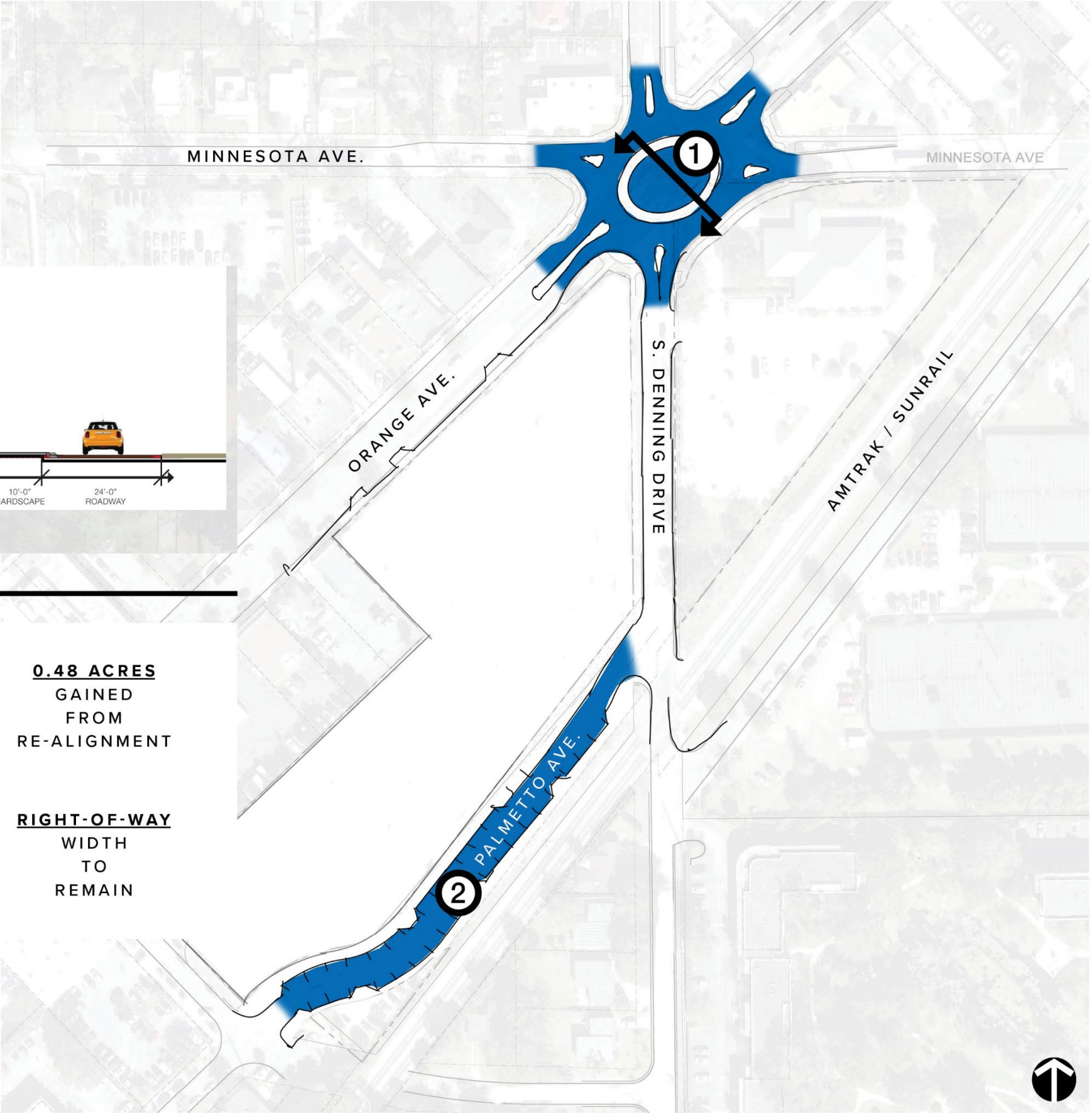
1 PROPOSED ROUNDABOUT SECTION ON ORANGE AVE.



0.48 ACRES  
GAINED  
FROM  
RE-ALIGNMENT

RIGHT-OF-WAY  
WIDTH  
TO  
REMAIN

2 PROPOSED RE-ALIGNMENT OF PALMETTO AVE.



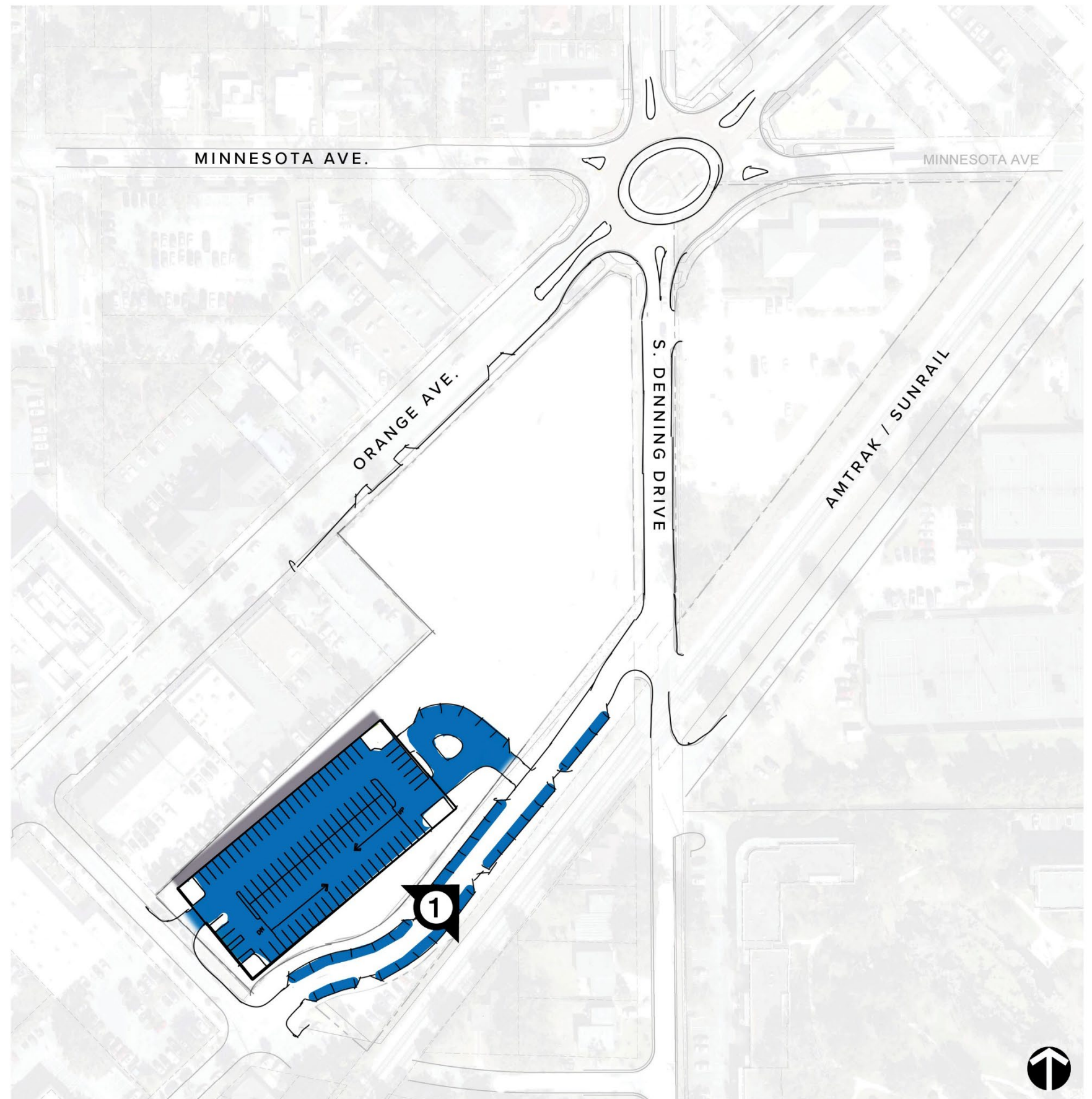


## SITE ELEMENTS / FRAMEWORK

- PARK BOUNDARY
- ROADWAY IMPROVEMENTS:
  - ROUNDABOUT ON ORANGE AVE.
  - RE-ALIGNMENT OF PALMETTO AVE.
- PARKING
  - DESIGNATED UBER / LYFT DROP-OFF
  - ON-STREET PARKING



① ON-STREET PARKING ON PALMETTO AVE.









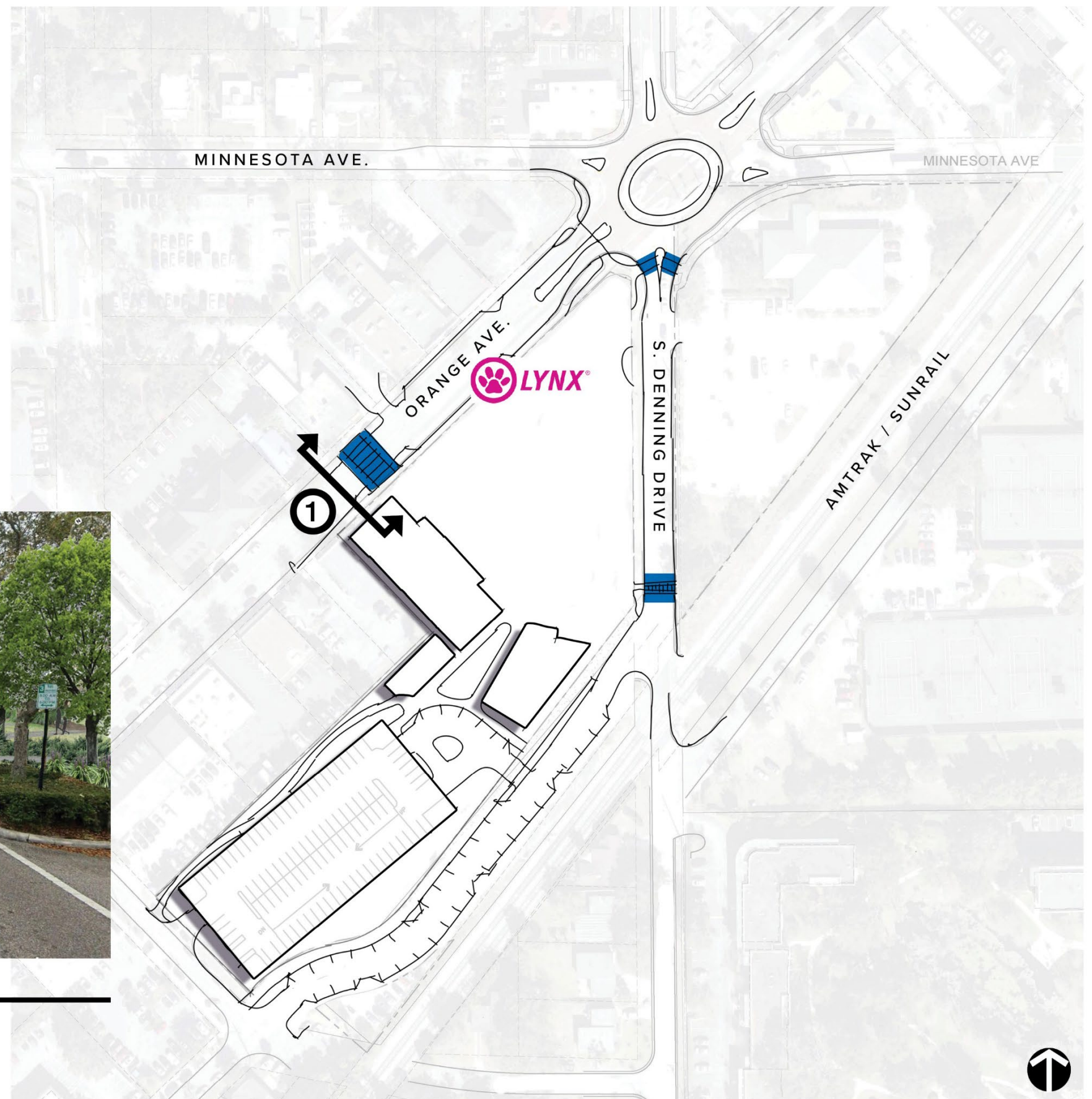
## SITE ELEMENTS / FRAMEWORK

- PARK BOUNDARY
- ROADWAY IMPROVEMENTS:
  - ROUNDABOUT ON ORANGE AVE.
  - RE-ALIGNMENT OF PALMETTO AVE.
- PARKING
  - DESIGNATED UBER / LYFT DROP-OFF
  - ON-STREET PARKING
- 17,820 SF. TOTAL PROPOSED BUILDING FOOTPRINT
- CROSSWALKS / ENHANCED BUS STOP



①

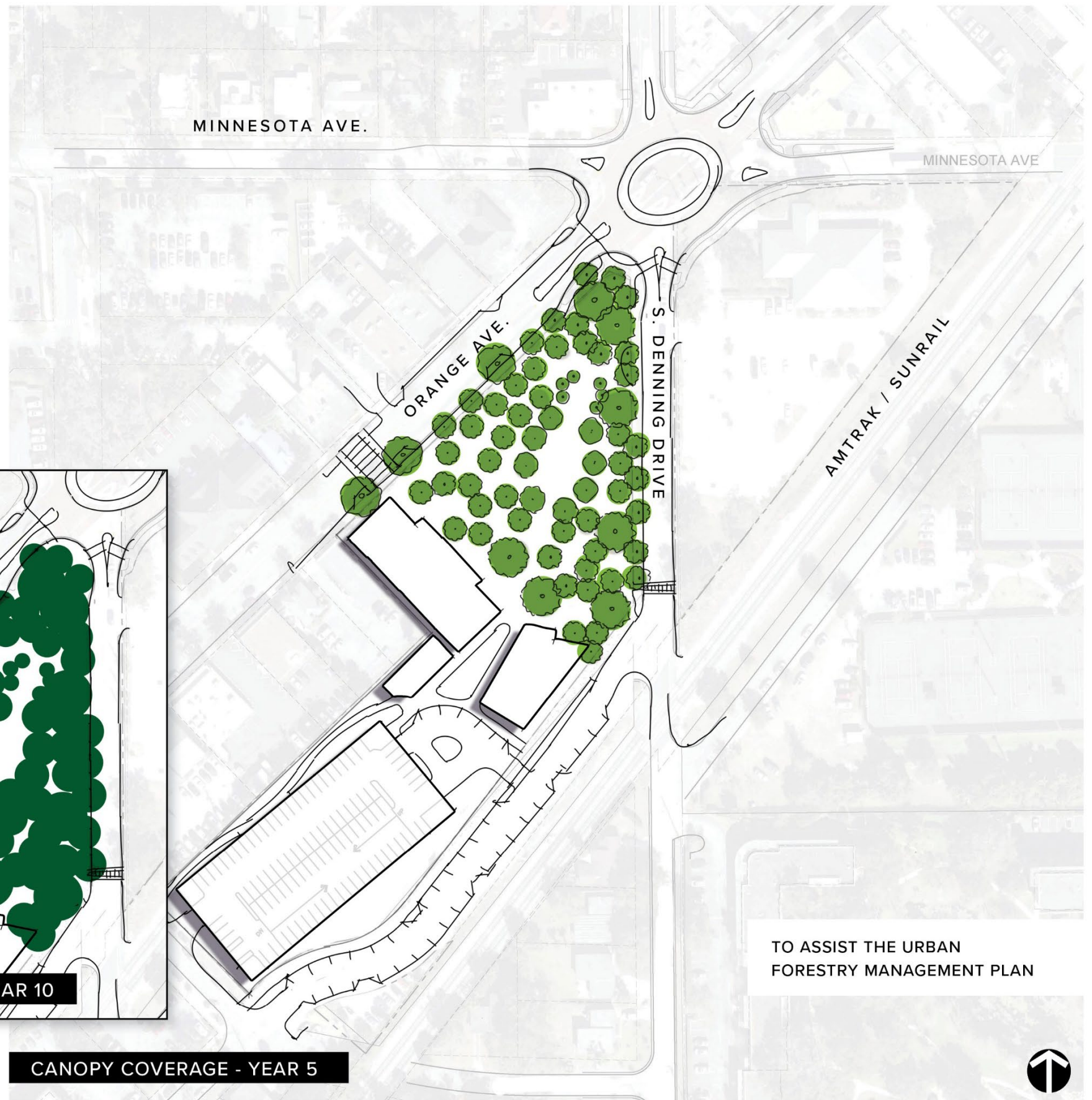
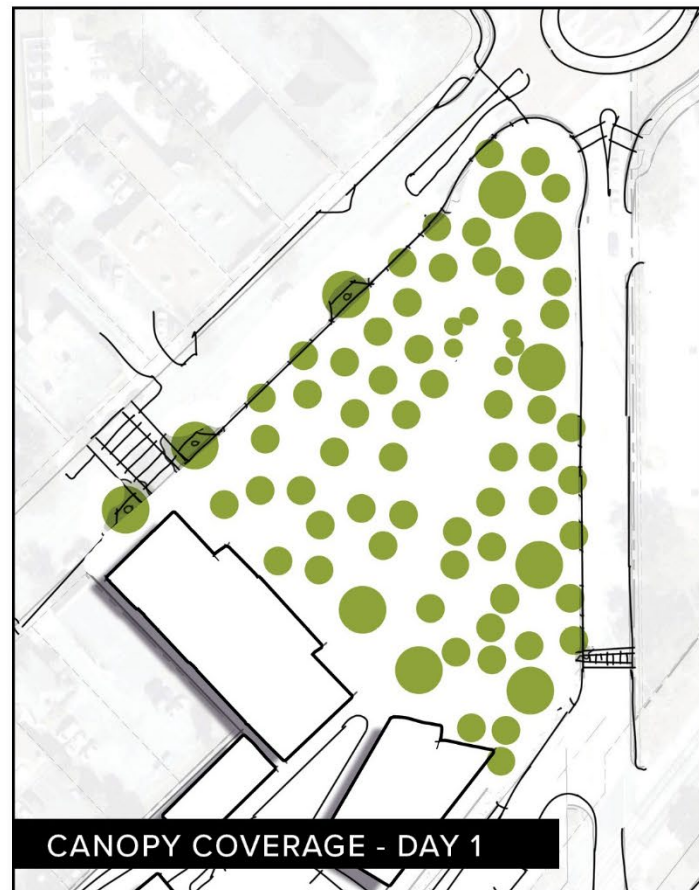
ORANGE AVE / PROPOSED CROSSWALK





## SITE ELEMENTS / FRAMEWORK

- PARK BOUNDARY
- ROADWAY IMPROVEMENTS:
  - ROUNDABOUT ON ORANGE AVE.
  - RE-ALIGNMENT OF PALMETTO AVE.
- PARKING
  - DESIGNATED UBER / LYFT DROP-OFF
  - ON-STREET PARKING
- 17,820 SF. TOTAL PROPOSED BUILDING FOOTPRINT
- CROSSWALKS / ENHANCED BUS STOP
- HEAVY TREE CANOPY





## SITE ELEMENTS / FRAMEWORK

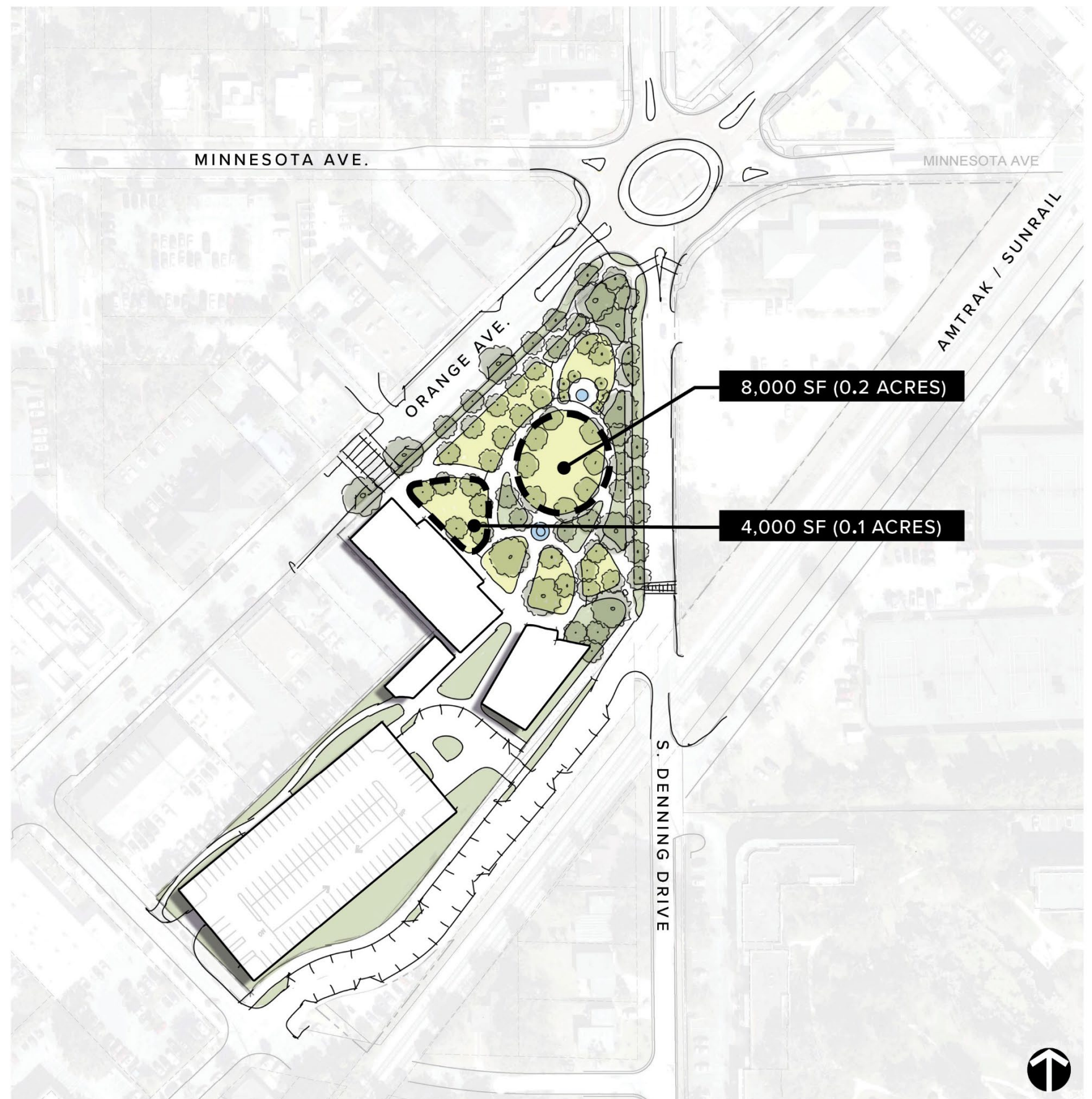
- PARK BOUNDARY
- ROADWAY IMPROVEMENTS:
  - ROUNDABOUT ON ORANGE AVE.
  - RE-ALIGNMENT OF PALMETTO AVE.
- PARKING
  - DESIGNATED UBER / LYFT DROP-OFF
  - ON-STREET PARKING
- 17,820 SF. TOTAL PROPOSED BUILDING FOOTPRINT
- CROSSWALKS / ENHANCED BUS STOP
- HEAVY TREE CANOPY
- WALKWAY PATHS





## SITE ELEMENTS / FRAMEWORK

- PARK BOUNDARY
- ROADWAY IMPROVEMENTS:
  - ROUNDABOUT ON ORANGE AVE.
  - RE-ALIGNMENT OF PALMETTO AVE.
- PARKING
  - DESIGNATED UBER / LYFT DROP-OFF
  - ON-STREET PARKING
- 17,820 SF. TOTAL PROPOSED BUILDING FOOTPRINT
- CROSSWALKS / ENHANCED BUS STOP
- HEAVY TREE CANOPY
- WALKWAY PATHS
- OPEN RECREATIONAL LAWN
- FEATURE WATER FOUNTAINS
- LANDSCAPE





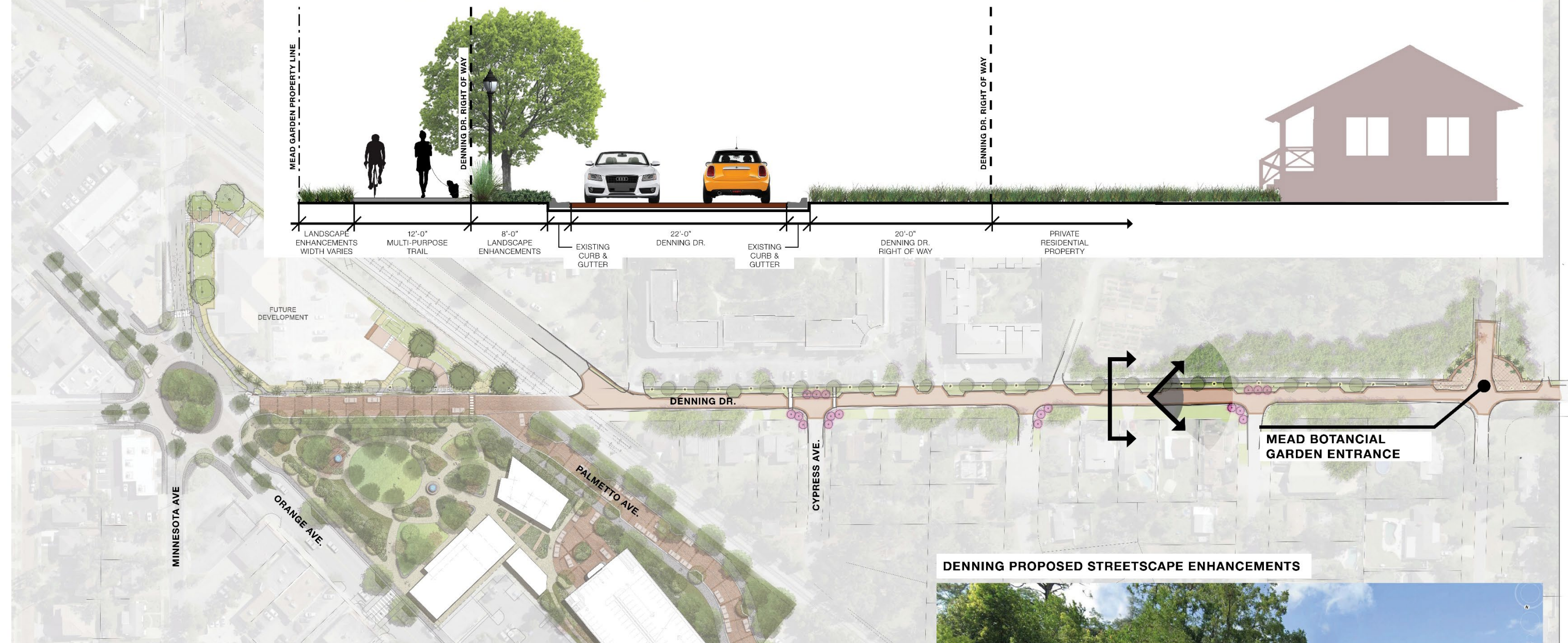
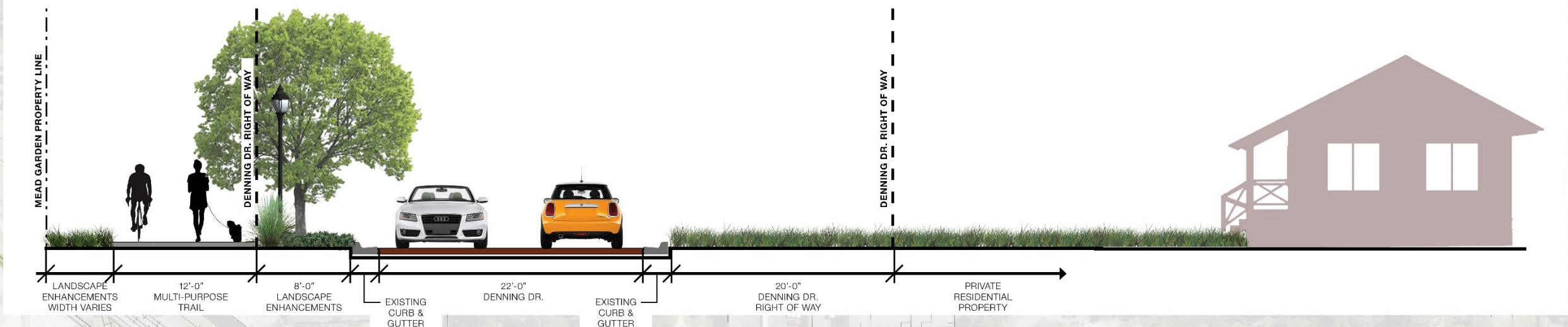
## SITE ELEMENTS / FRAMEWORK

- PARK BOUNDARY
- ROADWAY IMPROVEMENTS:
  - ROUNDABOUT ON ORANGE AVE.
  - RE-ALIGNMENT OF PALMETTO AVE.
- PARKING
  - DESIGNATED UBER / LYFT DROP-OFF
  - ON-STREET PARKING
- 17,820 SF. TOTAL PROPOSED BUILDING FOOTPRINT
- CROSSWALKS / ENHANCED BUS STOP
- HEAVY TREE CANOPY
- WALKWAY PATHS
- OPEN RECREATIONAL LAWN
- FEATURE WATER FOUNTAINS
- LANDSCAPE
- DENNING DRIVE IMPROVEMENTS





# PROPOSED SECTION



## IMPROVEMENTS

- CONTINUATION OF TRAIL
- CANOPY TREES
- PEDESTRIAN LIGHTING
- LANDSCAPE EDGE
- BRICK RESURFACING
- UNDERGROUND POWER

## DENNING EXISTING CONDITIONS

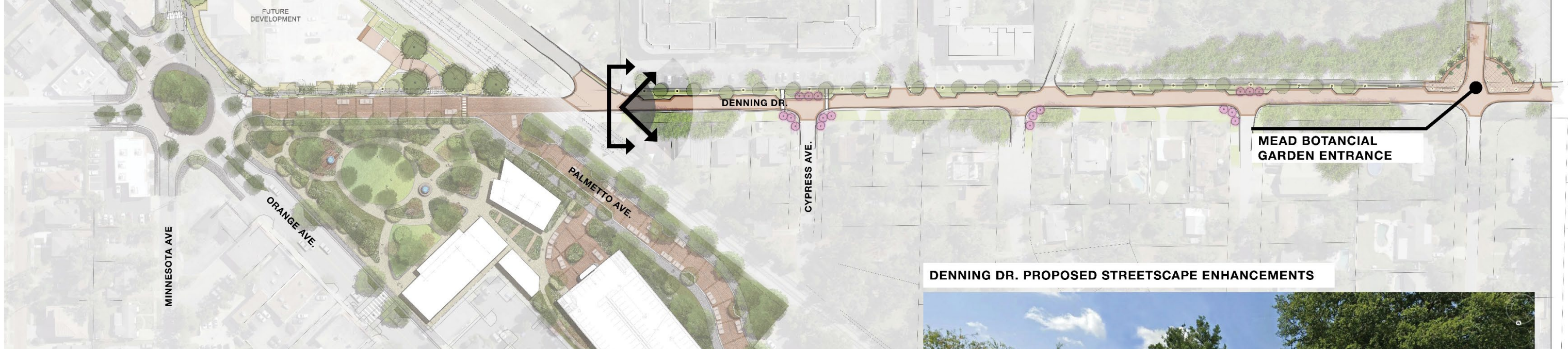
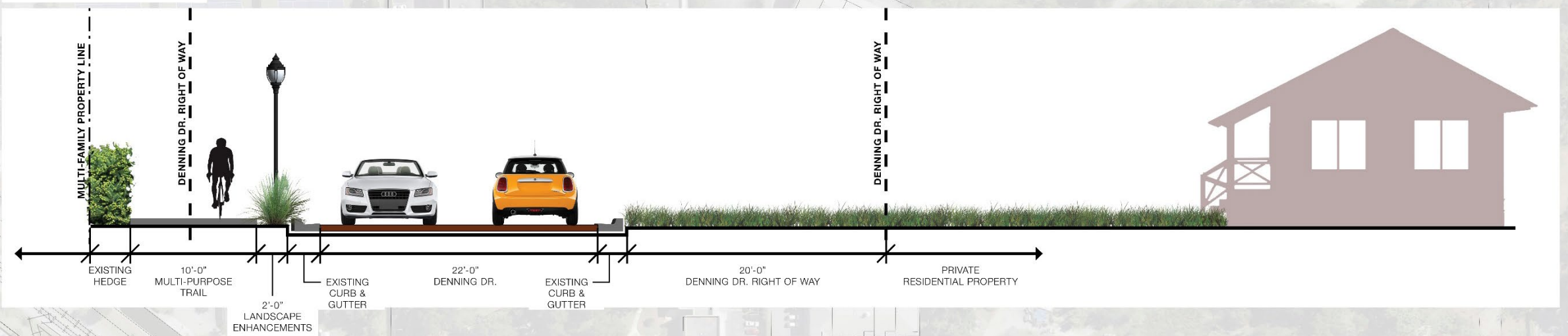


## DENNING PROPOSED STREETScape ENHANCEMENTS





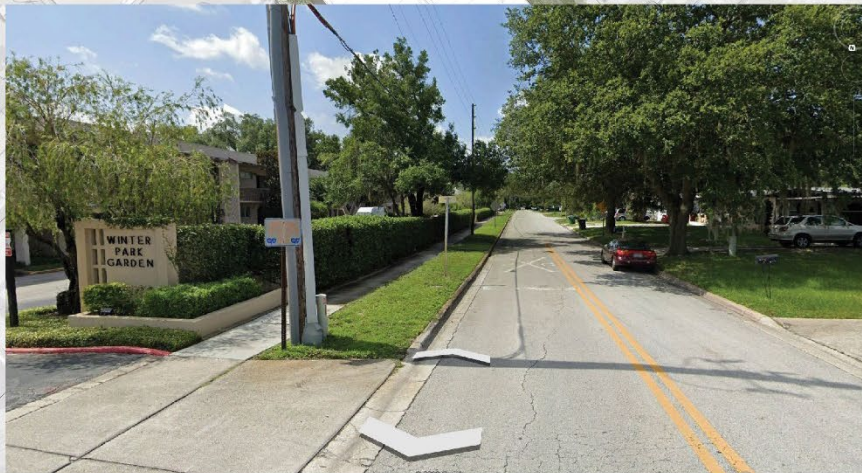
## PROPOSED SECTION



## IMPROVEMENTS

- CONTINUATION OF TRAIL
- PEDESTRIAN LIGHTING
- LANDSCAPE EDGE
- BRICK RESURFACING
- UNDERGROUND POWER

## DENNING DR. EXISTING CONDITIONS

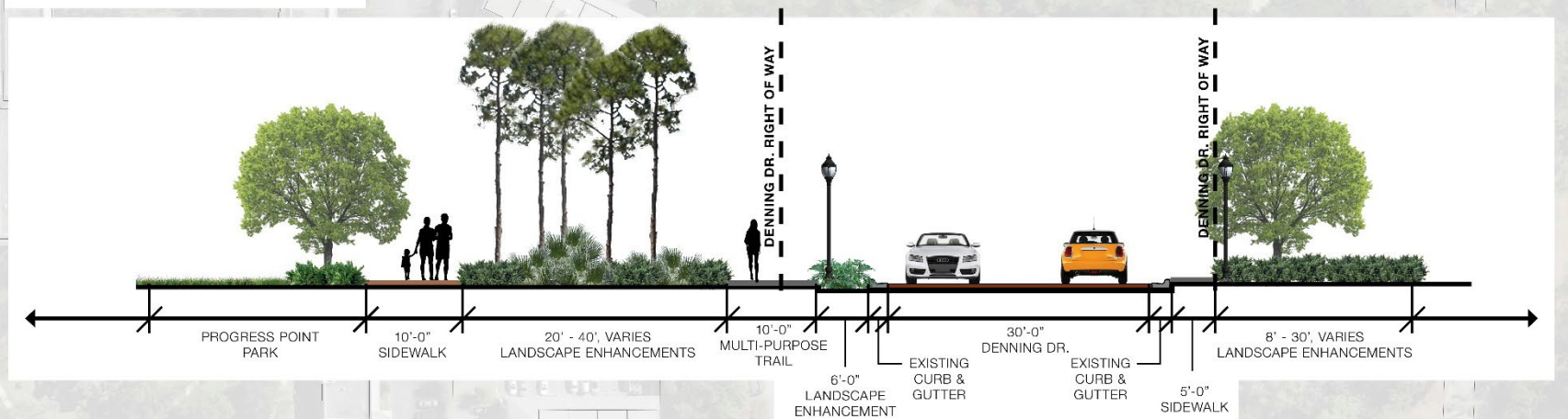


## DENNING DR. PROPOSED STREETScape ENHANCEMENTS





# PROPOSED PARK SECTION



DENNING DR.

PALMETTO AVE.

CYPRESS AVE.

MEAD BOTANICAL GARDEN ENTRANCE

## DENNING DR. PROPOSED STREETScape ENHANCEMENTS

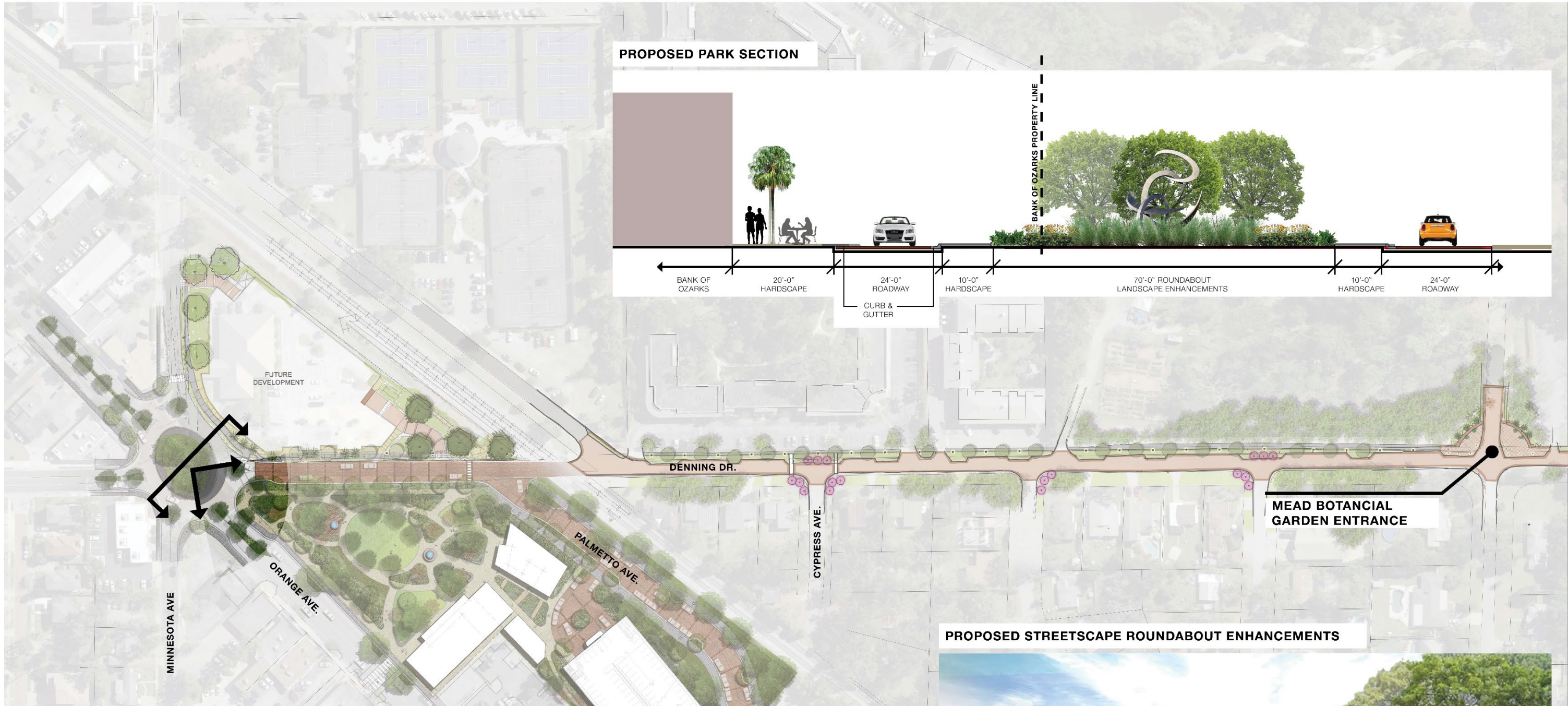
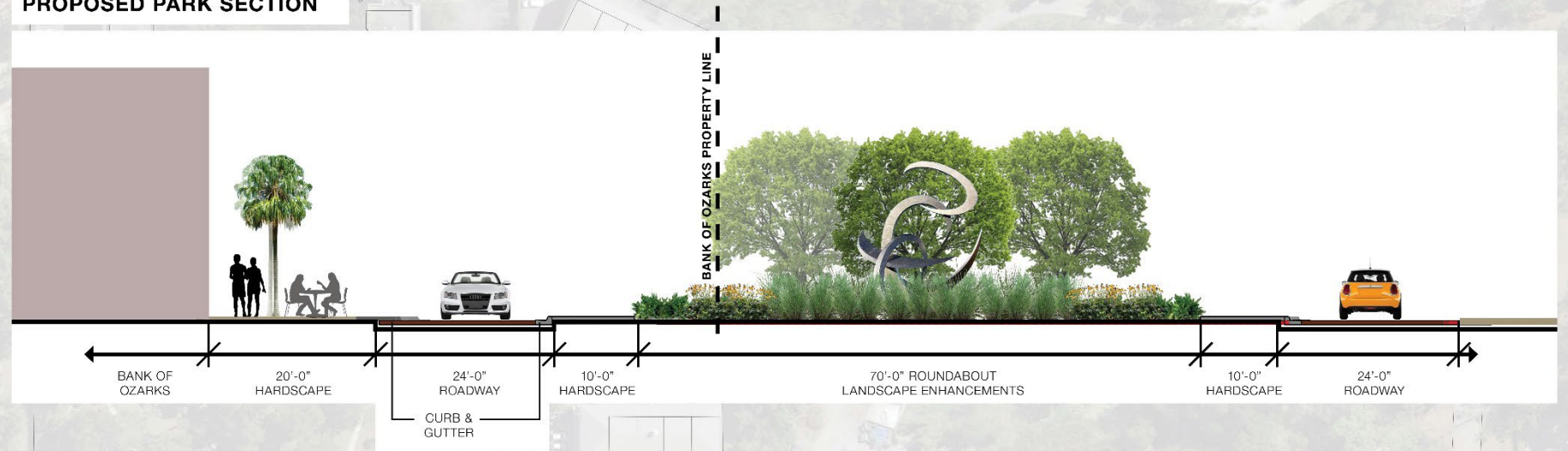


## DENNING DR. EXISTING CONDITIONS





# PROPOSED PARK SECTION



## IMPROVEMENTS

- TRAFFIC CALMING CIRCULATION
- CONTINUATION OF TRAIL
- CANOPY TREES
- PEDESTRIAN LIGHTING
- LANDSCAPE EDGE
- BRICK RESURFACING
- UNDERGROUND POWER

## INTERSECTION EXISTING CONDITIONS

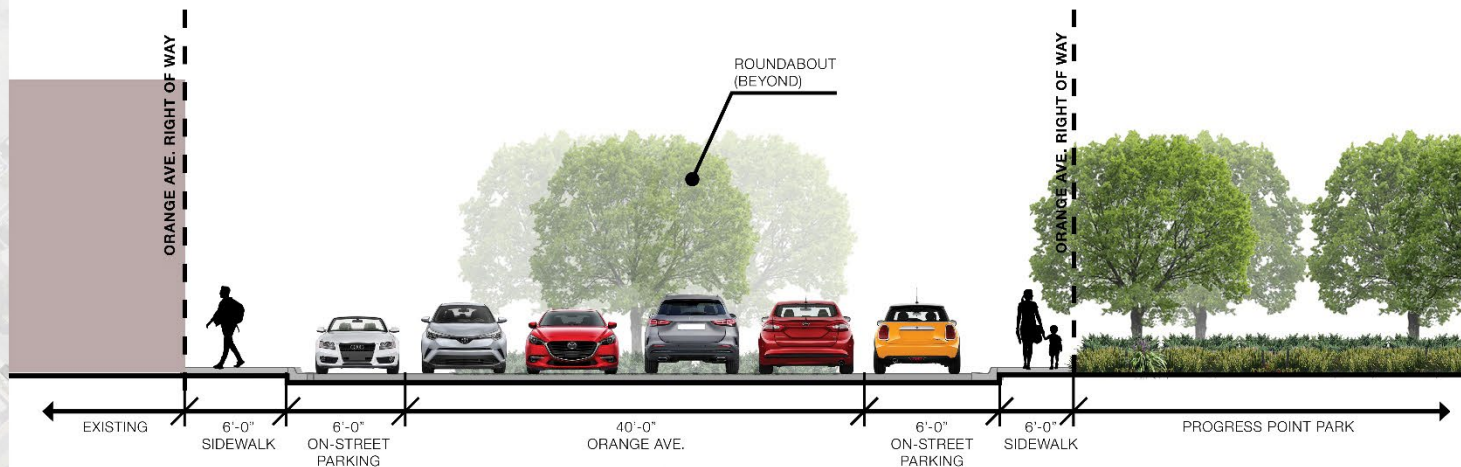


## PROPOSED STREETSCAPE ROUNDABOUT ENHANCEMENTS





## PROPOSED SECTION A - A<sub>1</sub>



## PROPOSED SECTION B - B<sub>1</sub>



### IMPROVEMENTS

- CROSSWALK
- LANDSCAPE ISLANDS
- CANOPY TREES
- PEDESTRIAN LIGHTING

### ORANGE AVE. EXISTING CONDITIONS

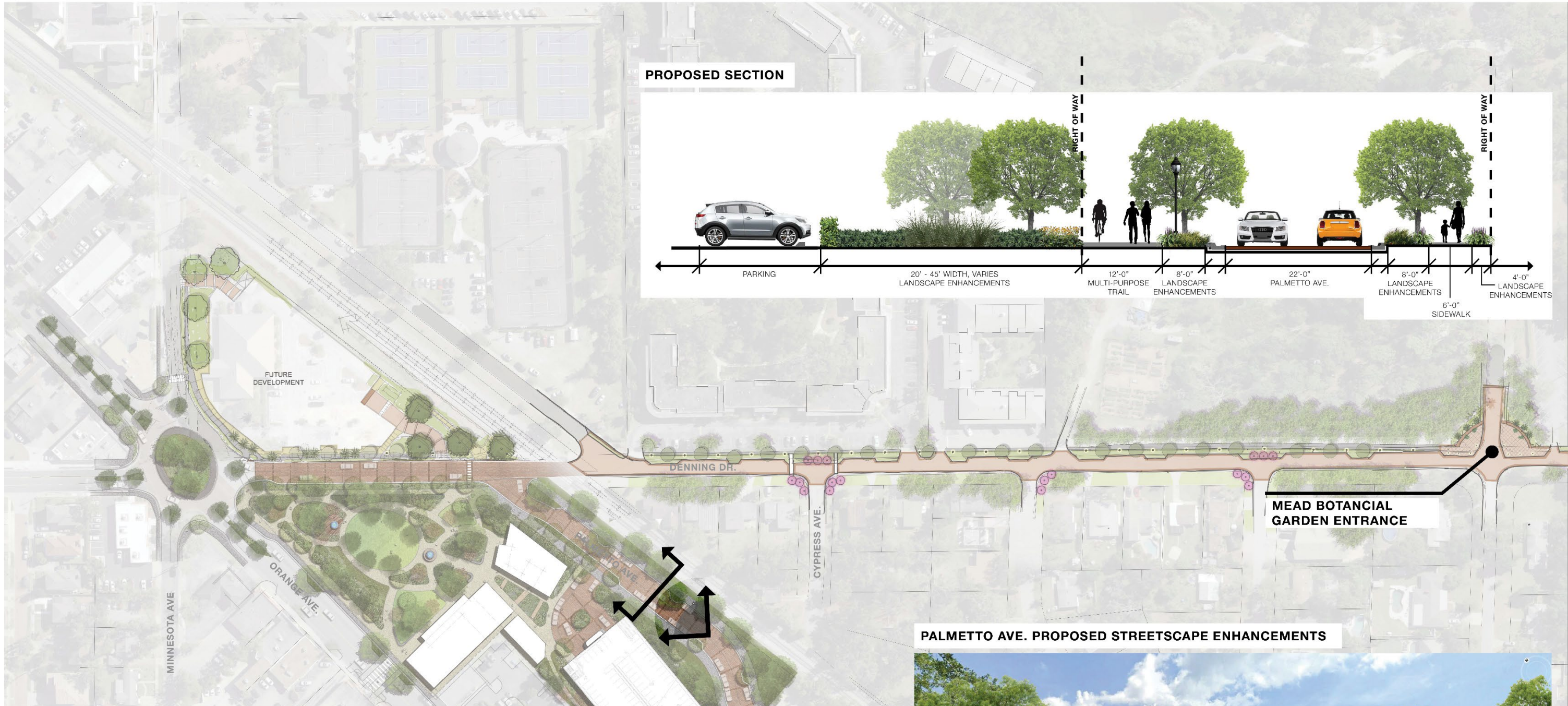
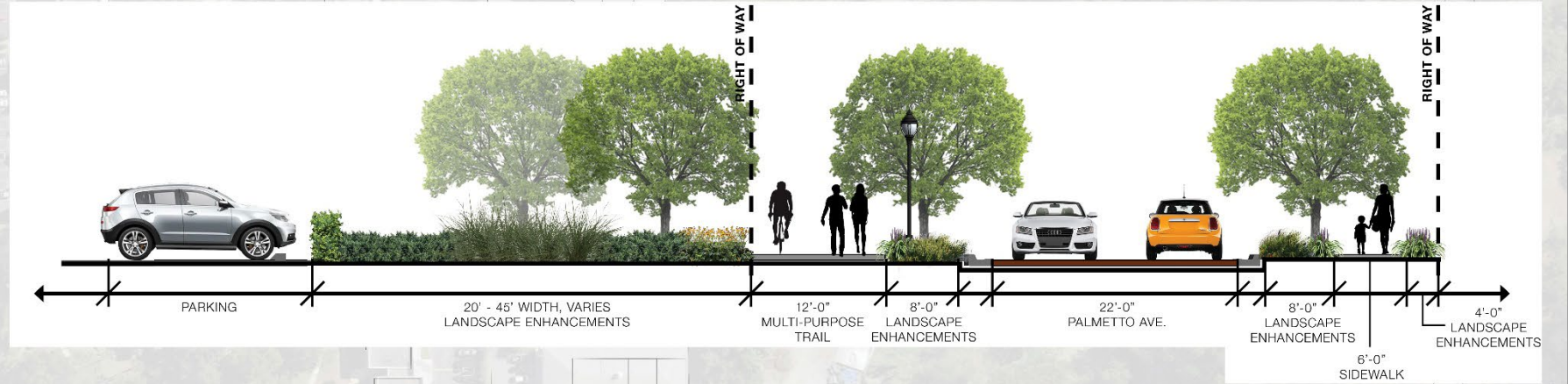


### ORANGE AVE. PROPOSED STREETSCAPE ENHANCEMENTS





# PROPOSED SECTION



## IMPROVEMENTS

- TRAFFIC CALMING CIRCULATION
- CONTINUATION OF TRAIL
- CANOPY TREES
- PEDESTRIAN LIGHTING
- BRICK RESURFACING
- UBER / LYFT DROP-OFF

## PALMETTO AVE. EXISTING CONDITIONS



## PALMETTO AVE. PROPOSED STREETScape ENHANCEMENTS







TRANSFORMING PROGRESS POINT  
A COMMUNITY VIRTUAL CHARRETTE

WELCOME !

UNDERSTANDING OUR PURPOSE

HISTORICAL CONTEXT

PLACEMAKING AS A FRAMEWORK

COMMUNITY INPUT

NEXT STEPS

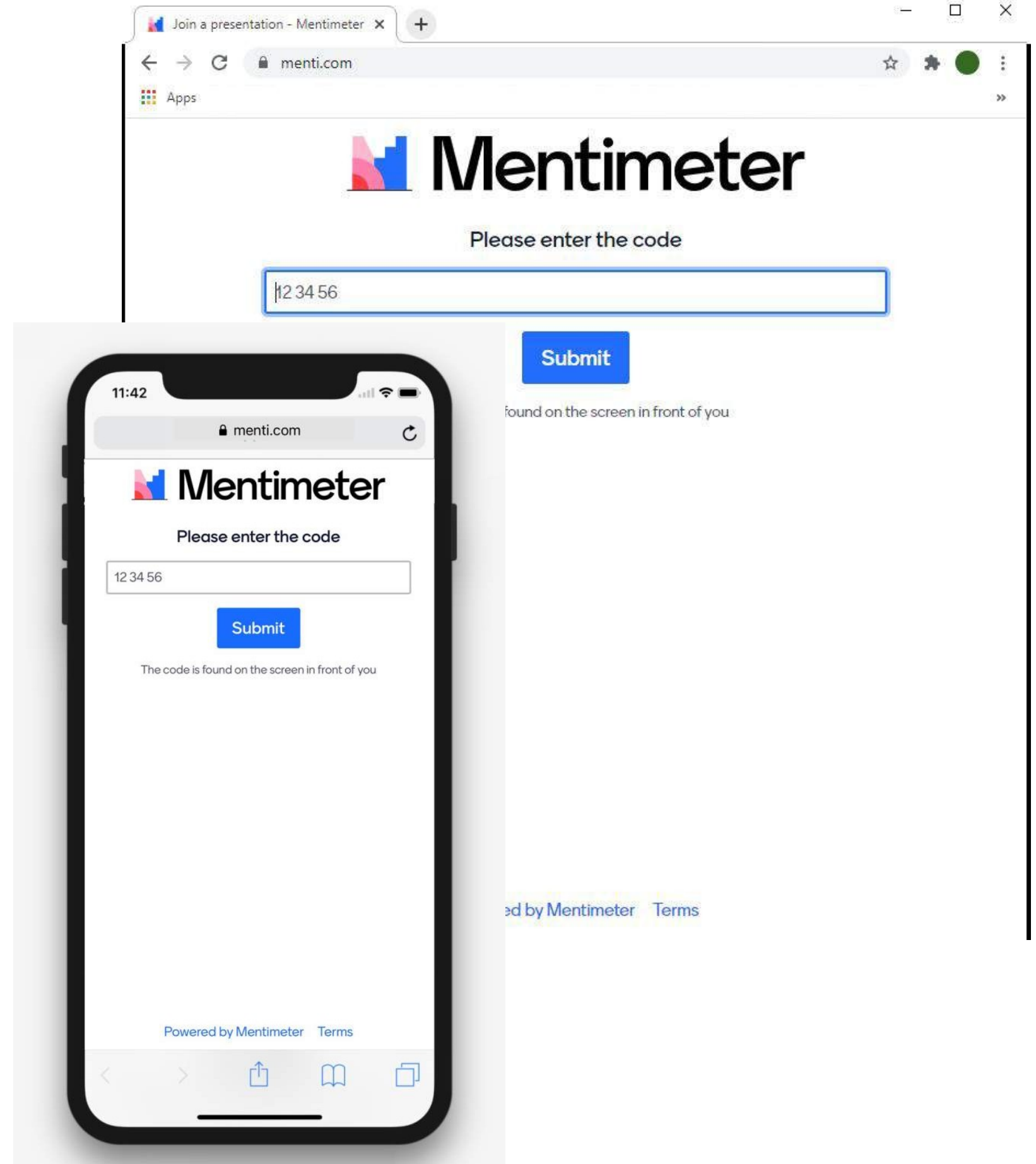


PLEASE GO TO:

**WWW.MENTI.COM**

ON DESKTOP OR MOBILE TO PARTICIPATE  
IN THE LIVE POLLING QUESTIONS.

POLLING RESPONSES  
ARE ANONYMOUS.







- **QUESTIONS MAY ONLY BE ANSWERED ONCE.**
- **YOU MAY NOT GO BACK TO CHANGE AN ANSWER.**
- **Q&A TO FOLLOW THROUGH ZOOM.**
- **RESULTS WILL BE POSTED ON THE CITY'S WEBSITE AT A LATER DATE.**




2

WHEN THIS SLIDE APPEARS ON THE FOLLOWING SCREEN, TYPE THE CODE SHOWN TO BEGIN THE SURVEY:


Go to [www.menti.com](http://www.menti.com) and use the code 7737 5433

**RESIDENT STATUS**




QUESTION  
1 of 17

# Are you a Winter Park resident?



0	0	0	0
Yes - Full-time resident	Yes - Part-time resident	No - I live in Central Florida, but work in Winter Park	No - Just a visitor







TRANSFORMING PROGRESS POINT  
A COMMUNITY VIRTUAL CHARRETTE

**WELCOME !**

UNDERSTANDING OUR PURPOSE

HISTORICAL CONTEXT

PLACEMAKING AS A FRAMEWORK

COMMUNITY INPUT

**NEXT STEPS**



# NEXT STEPS

Fall 2020

TODAY

Est. Spring/Summer 2021



INITIAL  
PARK  
VISION

PROGRAM  
SCHEMATIC DESIGN  
CIVIL ENG. DOCUMENTATION

PUBLIC & DEVELOPER  
INPUT

REDEVELOPMENT  
GUIDELINES

REQUEST  
FOR  
PARTNERSHIPS





TRANSFORMING PROGRESS POINT  
A COMMUNITY VIRTUAL CHARRETTE

**THANK YOU FOR  
YOUR PARTICIPATION !**