

CONSERVATION ELEMENT



CHERISH AND SUSTAIN WINTER PARK'S EXTRAORDINARY QUALITY OF LIFE

PLAN OUR GROWTH THROUGH A COLLABORATIVE PROCESS THAT PROTECTS OUR CITY'S TIMELESS SCALE AND CHARACTER

ENHANCE THE WINTER PARK BRAND THROUGH A FLOURISHING COMMUNITY OF ARTS AND CULTURE

BUILD AND EMBRACE OUR LOCAL INSTITUTIONS FOR LIFELONG LEARNING AND FUTURE GENERATIONS

GOAL 5-1: NATURAL & ENVIRONMENTAL RESOURCES

Provide for the preservation, conservation and appropriate management of the City's natural resources so that their economic, educational, environmental, social and aesthetic values are preserved and enhanced and available to future generations.

OBJECTIVE 5-1.1: Air Quality Winter Park shall participate in any regional or statewide effort to attain satisfactory air quality and reduction of carbon emissions in Central Florida at a condition equal to or better than state and federal air quality standards through the implementation of the following policies (below).

Policy 5-1.1.1: Transportation Alternatives The City shall continue to plan for transportation alternatives to gasoline-powered automobiles by promoting electric vehicles (EV) usage with public-facing charging stations, planning efficient pedestrian and bicycle systems and by evaluating future feasibility for multimodal systems, including bus and passenger rail transit, and by adapting streets, and parking structures to facilitate pedestrian and bicycle transportation.

Policy 5-1.1.2: Support Transit Service The City shall continue to support transit services within Winter Park, including annual allocation of city funds for such service if services are determined to provide a benefit commensurate with the cost to Winter Park residents and businesses and also meet City carbon reduction goals and objectives.

Policy 5-1.1.3: Urban Form & Pattern The City shall integrate land use patterns and transportation systems by assuring that character, design, and intensity of development is compatible with adjacent transportation infrastructure and services. The City shall continue to facilitate an urban form following planning concepts inherent to neo-traditional neighborhood planning philosophies (i.e., grid system street pattern, residential and non-residential uses within walking distance, public open spaces and plazas).

Policy 5-1.1.4: Outdoor Burning Prohibition The City shall continue to enforce the prohibition on open burning of trash and debris.

Policy 5-1.1.5: Air Monitoring Participation The City shall continue to assist Orange County's air quality monitoring program by maintaining the availability of the Martin Luther King Jr. Park air quality monitoring station.

Policy 5-1.1.6: Public Education The City shall support LYNX (aka Central Florida Regional Transportation Authority), the METROPLAN Orlando, and Orange County efforts to educate and promote public awareness about mass transit, car-pooling, bikeways, park-n-ride lots, and other alternative transportation modes as a means to reduce automobile emission pollution.

Policy 5-1.1.7: Air Quality Standards The City shall support enforcement of applicable standards for air quality to control significant emissions of air pollutants in order to maintain and improve the existing air quality.

Policy 5-1.1.8: Combat Erosion & Generation of Dust Particles Construction or clearing activities that expose, destabilize, or otherwise alter soil shall be required to implement best management principles and practices for soil protection to reduce wind-related soil erosion and dust particles as air pollutant.

Policy 5-1.1.9: Promote Alternative Transportation Fuels As part of the capital purchasing process for new motor vehicles used to transport City staff serving functions other than life/safety or maintenance operations, the City shall purchase vehicles powered by alternative fuels or engine design, such as hybrid or electric vehicles.

Policy 5-1.1.10: Energy Conservation & Alternative Energy Use Because the City of Winter Park owns the electric utility serving the city, it is able to pursue policies and programs designed to conserve energy and to make use of alternative energy sources. The City shall consider: 1) Incentives and provide technical assistance for commercial and residential energy conservation, 2) Incentives for the installation of solar power generation and solar hot water heating by its residential and commercial customers, 3) The purchase of "green power" for sale to its customers.

Policy 5-1.1.11: Green Technology for Municipal Buildings The City shall consider the feasibility of retrofit in existing municipal buildings and design new buildings to minimize the use of energy, water and other resources, to facilitate the generation of solar power and to serve as examples for others of environmental sustainability.

GOAL 5-2: MAINTAIN AND IMPROVE THE QUALITY OF CITY LAKES & OTHER WATERBODIES

OBJECTIVE 5-2.1: Surface Water Quality & Quantity – Lakes, Streams & Canals

The City shall conserve, appropriately use, and protect the quality and quantity of surface water sources to maintain environmental and recreational benefits through the implementation of the following policies.

Policy 5-2.1.1: Construction Impacts on Surface Water Quality Soil and silt material disturbed by clearing and construction activities shall remain onsite and away from lake and streams through application of soil protection methods including application of the following techniques where applicable.

1. Soil erosion created by wind and stormwater runoff shall be reduced through the application of best management construction practices that retain soils on-site to the greatest extent practical.
2. Tree and vegetation protection standards shall prevent the clearing of land or the removal of trees, particularly within littoral zones (shoreline areas), except when authorized by the City through development or clearing permits.
3. Temporary stormwater drainage systems, such as swales and berms, shall be installed with new construction and clearing activities to capture direct surface run-off waters that may carry sand, silt, and other debris into lakes or streams.

Policy 5-2.1.2: Infrastructure Improvements The City shall continually implement surface water quality improvement projects that minimize debris, nutrient and bacteriological contamination of the lakes to include street and sediment trap cleaning, retention systems, protection and restoration of native aquatic vegetation, and utilizing technologies such as stormwater alum injection systems.

Policy 5-2.1.3: Stormwater Utility Fees The City shall continue the stormwater utility fee as a means of generating revenue for surface water quality improvement projects.

Policy 5-2.1.4: Aquatic Plant Management The City shall employ aquatic plant management practices that reduce the emergence of non-native, undesirable aquatic plants and improve conditions for safe recreational boating and fishing activities.

Policy 5-2.1.5: Alternative Approaches to Aquatic Plant Management The City shall continue to implement integrated management plans that includes physical, biological and chemical controls for its aquatic plant management program in order to protect water quality while also controlling undesirable and non-native aquatic plants. The City shall coordinate with the Florida Fish and Wildlife Conservation Commission

(FWC) on an annual basis regarding best management practices and alternative methods to control emergence and proliferation of undesirable aquatic plants.

Policy 5-2.1.6: Septic Tank Use The City shall require approval of the Orange County Health Department for any septic system construction or renovation.

Policy 5-2.1.7: Stormwater Design Compatibility with Natural Systems Stormwater retention/detention areas shall be designed and landscaped to appear as a natural waterbody. Any stormwater detention or retention areas located near lakes or other waterbodies within the corporate limits of the Winter Park shall be designed with shorelines that are sinuous rather than straight and that create curvilinear shorelines at the water/land interface. The City shall include design criteria and landscape requirements for stormwater retention/detention facilities.

Policy 5-2.1.8: Regional Surface Water Quality Programs & Improvements The City shall coordinate its surface water improvement program with the St. Johns River Water Management District (SJRWMD) and the Florida Department of Environmental Protection (FDEP) as applicable to the middle basin of the St. Johns River and the Econlockhatchee River System. The City shall also coordinate with SJRWMD/FDEP regarding City surface water improvement projects that may be eligible for SJRWMD/FDEP funding assistance.

Policy 5-2.1.9: Educational outreach The City shall conduct educational outreach to engage the community, both residents and visitors, for the protection and enhancement of water quality. Such engagements shall include the following.

1. Provide public awareness on fertilizer use to reduce excess nutrient loading into lakes and creeks.
2. Provide aquatic plant restoration events to provide education on the important of healthy shorelines with community engagement and volunteers.
3. Implement a citizen guide to healthy shoreline living that educates lakefront residents on how to further protect water quality, from selecting vendors that do not violate shoreline ordinances to proper landscape management services that refrain from discharging grass clippings into lakes and creeks.
4. Provide public awareness on the prevention of importing invasive aquatic plant material found on boats/trailers entering into the public waters known as the Chain of Lakes.

OBJECTIVE 5-2.2: Protection of Potable Water Resources The City shall conserve, appropriately use and protect the water quality and quantity of current and projected water sources through the implementation of the following policies.

Policy 5-2.2.1: Central Florida Water Initiative The City shall continue to participate in workshops and intergovernmental coordination activities conducted as part of the SJRWMD's Central Florida Water Initiative, which strives to identify long term solutions to regional groundwater supply problems and to identify potential alternative water sources other than the Floridan aquifer.

Policy 5-2.2.2: Water Supply Evaluation. Upon the effective date of the City of Winter Park Comprehensive Plan, the City shall not approve an amendment to the Future Land Use Map, a modification of any land use designation resulting in an increase in density or intensity, or a modification to any land use designation that will change uses and activities allowed therein, unless one of the two following criteria are met:

- 1.** Water supply necessary to service a utility service area must be available under the allocation allowed by a consumptive use permit issued by the SJRWMD. The water supply allocation must be able to meet the water demands anticipated from the utility service area as well as the additional demands generated by development allowed by an amendment to the City of Winter Park Comprehensive Plan. Infrastructure and wells necessary to withdraw water supplies demanded by a utility service area must be in place and approved by FDEP and the SJRWMD.
- 2.** At the time of the issuance of a building permit, the City shall verify with the Water and Wastewater Utility Department that adequate water supplies will be available to serve the new development no later than the anticipated date of issuance of a certificate of occupancy.

Policy 5-2.2.3: Consumptive Use Permit The City shall comply, as required, with the provisions of the consumptive water use permit issued to Winter Park Utilities by the SJRWMD.

Policy 5-2.2.4: Utility Rate Structure The City shall encourage and foster water conservation through its inverted water utility rates. The City shall periodically evaluate the utility service's water rate methods and service to determine if rate adjustments are necessary to discourage overuse.

Policy 5-2.2.5: Public Education The City shall support public awareness of water conservation needs through informative and education material made available to residents and business through mediums such as notices included with water bills and postings on the City's web site. The City shall also cooperate with the SJRWMD regarding its public education programs that promote water conservation.

Policy 5-2.2.6: Water Restriction Notices The City shall utilize utility bills, the City's newsletter, or its web site to facilitate public education addressing methods to achieve compliance within any restrictions on water usage and lawn irrigation imposed by the St. Johns River Water Management District.

Policy 5-2.2.7: Wellhead Protection Activities that may potentially threaten groundwater quality shall be located away from potable water wellheads. The City shall protect subsurface aquifer water sources and thereby conserve the source of the City's future potable water by prohibiting uses such as the storage or disposal of hazardous materials, new underground storage tanks and new septic tanks within a

500 foot radius surrounding wellfields. Wellhead protection standards shall be consistent with any standards imposed by the SJRWMD or the FDEP.

Policy 5-2.2.8: Wellfield Protection Areas The City shall ensure the protection of potable water supply by prohibiting uses such as the storage or disposal of hazardous materials, new underground storage tanks and new septic tanks or have the potential to harm the water supply in accordance with Chapters 62-521 and 62-555, F.A.C. within a 500 foot radius surrounding wellfields. The area enclosed within a 500 foot radial distance surrounding the well is designated as a wellfield protection area.

Policy 5-2.2.9: Drought Tolerant Landscaping Landscape standards shall continue to include requirements to encourage the use of low-water tolerant plant species as well as the installation of rain or moisture monitor devices for irrigation systems.

Policy 5-2.2.10: Incentives for Use of Low Water-Tolerant Landscaping The City shall allow the elimination of a required irrigation system when a landscape plan is approved by the Parks Department that includes the use of native plants and other vegetation which will survive without irrigation, while still achieving the landscape buffering.

Policy 5-2.2.11: Water-Saving Fixtures For building rehabilitation or remodeling projects, the City shall evaluate and consider adopting incentives to encourage plumbing fixture retrofits for water-saving fixtures. Public fountains installed at City parks and facilities after the effective date of the City of Winter Park Comprehensive Plan shall be designed to use recirculating water.

Policy 5-2.2.12: Development within Area of Special Well Construction (ASWC) All new development occurring within an area designated by the SJRWMD as an "Area of Special Well Construction" must be served by a central water and sewer system.

Policy 5-2.2.13: Emergency Water Conservation Winter Park shall cooperate with the SJRWMD to conserve water resources during water supply emergencies.

Policy 5-2.2.14: Extension of Gray Water/Re-use Lines The City shall encourage the extension of gray water systems and re-use lines to those developed areas of Winter Park currently not served by such systems. If such coordination efforts reveal that extension of re-use lines is not financially feasible, the City shall investigate potential grant funds administered by state or federal agencies that may be eligible to assist with the extension of such systems.

Policy 5-2.2.15: Multi-jurisdictional Planning Initiatives Identify partnerships with surrounding utilities such as Orange County, Orlando Utilities Commission, and

Seminole County on regional tradition and alternative water supply development projects to provide wholesale water to the City of Winter Park.

OBJECTIVE 5-2.3: Maintenance of Floodplain The City shall protect the natural functions of the 100-year floodplain to maintain its current flood carrying and flood storage capacity and to minimize damage to property caused by flooding.

Policy 5-2.3.1: Alteration of Streams & Floodways The City shall continue to prohibit the altering of, or construction in any stream or floodway, adding any fill, development proposing compensating storage in streams and wetland floodplain areas. The City's Floodplain Protection Ordinance shall maintain consistency with program policies of the Federal Insurance Administration.

Policy 5-2.3.2: Floodplain Protection Standards The City shall continue to require a conditional use permit for any type of construction within the stream floodplain areas, a lakefront, canalfront and streamfront site plan review by the Lakes and Waterways Board and/or Lake Killarney Board for approval of all construction within lake, canal and stream floodplain areas, new habitable construction to locate outside all lakefront and stream floodplain areas, and require connection to sewer over septic where possible.

Policy 5-2.3.3: FEMA Construction Standards The City shall require that construction meet or exceed the Federal Emergency Management Agency (FEMA) standards.

OBJECTIVE 5-2.4: Protect & Preserve Wetlands Preserve, protect, restore and replace wetlands to achieve no net loss of functional wetlands after the adoption of this comprehensive plan. The City shall ensure the protection of wetlands and wetland functional values by prioritizing protective activities with avoidance of impacts as the first priority, minimization of impacts as the second priority, and mitigation for impacts as the third priority.

Policy 5-2.4.1: Wetland Definition & Delineation The use of the term wetlands in the Goals, Objectives and Policies of this Comprehensive Plan shall be pursuant to this definition and delineation, as established by the State of Florida.

Policy 5-2.4.2: Dedication of Conservation Areas Conservation future land use designation shall be placed on all stream front wetlands or other adjacent environmentally sensitive lands as a condition or requirement of a development approval for all properties containing any designated wetland.

Policy 5-2.4.4: Protection of Wetlands With the exception found in Policy 5-2.4.3, the City's protection of all wetlands in the City including adjacent environmentally sensitive lands shall be to prohibit any development within fifty (50) feet of all designated wetlands. No fill disturbance or development may occur within this fifty (50) foot buffer protection zone.

Policy 5-2.4.4: Protection of Wetlands The City's protection of all wetlands in the City (except for the remaining isolated sections of the Crane Strand wetland) including adjacent environmentally sensitive lands shall be to prohibit any building and structures within fifty (50) feet of all designated wetlands. No fill disturbance or development may occur within this fifty (50) foot buffer protection zone.

Policy 5-2.4.5: Protection of Environmentally Sensitive Lands The City's protection of environmentally sensitive lands shall be to prohibit all development within fifty (50) feet of all designated wetlands, any stream, canal, or lake and within fifty (50) feet of any wildlife habitat containing endangered or threatened species as detailed on Map 5-5 in this element.

Policy 5-2.4.6: Conservation Designation. The Future Land Use Element and Map shall require a conservation designation to be placed upon all wetlands, floodways and stream floodplain areas designated by the FEMA floodplain maps along all stream front areas in the city specifically to protect these areas from development impacts and potential encroachment. The Future Land Use Map shall place a Conservation Designation upon such wetlands along Howell Branch Creek northeast of Lake Maitland known as Howell Branch Preserve as well as the Howell Branch Creek wetlands located between Lakes Sue and Virginia.

Policy 5-2.4.7: Wetland Mitigation Disturbance or destruction of wetlands shall be avoided on lands designated conservation. Where the SJRWMD has approved the removal, alteration, or destruction of wetlands, within the remaining isolated sections of the Crane Strand wetland, mitigation shall occur consistent with those requirements. Prior to issuance of any land clearing or construction permit from the City, an applicant must receive and adhere to all environmental permits that are required by the SJRWMD and/or State of Florida.

Policy 5-2.4.8: Wetland Mitigation Sites Where wetland mitigation is required by the SJRWMD, the mitigation site must occur within or adjacent to the City of Winter Park except when a site cannot be found that meets the approval of the SJRWMD and the City. The City will encourage the protection and preservation of wetlands within the City limits instead of off-site locations.

Policy 5-2.4.9 Wetland Regulations Shall Avoid Duplication Wetland regulations adopted by the City shall avoid duplication of wetland regulation by maintaining consistency with the regulations of FDEP and SJRWMD.

- A.** The City shall regulate activities which will result in the destruction and/or degradation of functional wetlands that have been permitted by FDEP or SJRWMD based on FDEP and SJRWMD professional staff application of criteria, evaluation and conditions of approval.
- B.** Any permitted wetland degradation or destruction shall provide for mitigation as designated in the Conservation Element.

OBJECTIVE 5-2.5: Protection of Natural Resources The City shall conserve and protect the remaining natural systems through appropriate land use designations. All future development or redevelopment of land affecting natural resources shall be consistent with the City of Winter Park Comprehensive Plan.

Policy 5-2.5.1: Protect Conservation Areas The City shall protect conservation areas, parks and open space lands from activities that would significantly damage the natural integrity, character or environmental balance of said areas.

Policy 5-2.5.2: Designation of Conservation Land Resources The Future Land Use Map series delineates Conservation Future Land Use for wetlands whose value warrants long-term preservation. Such areas include wetlands, floodways and floodplains along Howell Branch Creek northeast of Lake Maitland known as Howell Branch Preserve as well as along the Howell Branch Creek wetlands located between Lakes Sue and Virginia. All conservation land resources shall either remain undeveloped or shall undergo "restricted development." "Restricted development" shall be defined as the development options allowed by the development rights and restrictions stipulated in the Future Land Use Element. Passive recreation shall be a use that is allowed within the Conservation future land use designation.

Policy 5-2.5.3: Use of Conservation, Open Space & Recreation Areas Those areas designated on the Future Land Use Map for conservation, open space and recreation shall not be developed except in furtherance of those purposes and as allowed by City of Winter Park's Comprehensive Plan. Remaining areas of important natural habitat shall not be altered or converted to active recreational facilities.

Policy 5-2.5.4: Intergovernmental Coordination & Natural Resource Management The City shall coordinate with the FDEP, SJRWMD, East Central Florida Regional Planning Council, Florida Fish and Wildlife Conservation Commission, Florida Department of Health, Orange and Seminole County, and surrounding municipalities regarding management or protection of natural resources. Such intergovernmental coordinating activities shall protect the values and functions of natural systems. The methods for coordinating with other local governments, state, federal, and private plans/programs for conservation of natural resources shall be incorporated into the City's planning process.

Policy 5-2.5.5: Enforcement Activities The City shall protect and conserve the natural functions of existing vegetative communities, fauna, flora, soils, lakes, floodplains, and other identified natural resources.

Policy 5-2.5.6: Evaluate Opportunities for Land Acquisition The City shall annually consider the usefulness and availability of state and federal grant programs for the acquisition lands for conservation areas or passive recreation.

OBJECTIVE 5-2.6: Protect Native Vegetation & Aquatic Habitats The City shall protect and retain major vegetative communities, aquatic habitats, and endangered and threatened plant species through implementation of the following policies.

Policy 5-2.6.1: Implementing Protection of Vegetative Communities & Lake Habitats The City shall require that development protect trees by minimizing the removal of protected trees and requiring compensation and replanting for the loss of protected trees based on the diameter of tree. Plans for lakeshore development shall be reviewed to prevent shoreline erosion, degradation of water quality, and harmful impacts on lake habitat.

Policy 5-2.6.2: Preservation of Native Plant Communities Tree protection and land clearing standards within the Land Development Code shall continue to mandate that new development preserve shoreline vegetation, wetlands, and vegetative habits known to serve as nesting areas or habitat for endangered or threatened species, or that mitigate the impacts of runoff on lakes and wetlands.

Policy 5-2.6.3: Removal of Undesirable Exotic Vegetation. All nuisance and invasive exotic plant species shall be removed from development sites by a property owner/developer prior to issuance of a certificate of occupancy.

Policy 5-2.6.4: Location of Park & Open Space Dedications Where park and open space dedications required of new development are placed on-site, they shall be placed in areas that provide the greatest protection to and preserve the most environmentally important and sensitive.

Policy 5-2.6.5: Use of Florida-Friendly Plants for Landscaping Landscape plans and plant materials required of new development shall promote the use of Florida-friendly plant species and avoid the planting of exotic plants known to create nuisances.

Policy 5-2.6.6: Restoration of Buffer Strips Along Shorelines Shoreline landowners shall be encouraged to replace shorelines landscaped in turf grass with buffer strips of native vegetation at least ten feet in width.

OBJECTIVE 5-2.7: Trees & Treescape Conservation and Protection The City shall maintain, manage, conserve, and foster the extensive tree inventory and tree canopy within the City through the Forestry Management Plan.

Policy 5-2.7.1: Tree Planting Program The City shall maintain, manage, conserve and foster the extensive tree inventory and canopy within Winter Park by continuing an urban forestry program that includes tree planting, and tree maintenance along City right-of-ways and on City owned property, develop and implement educational programs to assist homeowners with the maintenance and care of trees, and the administration of a tree inventory, keeping record of the location and status of trees within public lands and along public right-of-ways. A comprehensive approach to the management of streetscape trees shall include the following:

1. Establish an accurate information database on the existing street tree inventory on a block-by-block basis;
2. Project the useful life expectancy of street trees in order to assess the replacement cost and other implementation requirements. The objective of the data is to assess the likely impact on individual streets when existing street trees die as well as to assess and quantify the requirements for replacement on a block-by-block basis for each fiscal year;
3. As a result of developing accurate forecasts and the costs of the replanting requirements, the City shall develop a funding plan to implement a streetscape tree protection and reforestation program.

Policy 5-2.7.2: Tree Protection from Development Activities The City shall protect and conserve specimen and other significant trees from destruction by development activities through the site development process.

Policy 5-2.7.3: Tree City USA Program The City shall continue to participate in the Tree City USA program and sponsor related arbor celebration events.

Policy 5-2.7.4: Establish & Implement a Reforestation Plan The City shall develop and implement a reforestation plan to maintain and enhance the city's tree canopy.

OBJECTIVE 5-2.8: Protect Fisheries, Wildlife & Wildlife Habitats The City shall conserve habitat for fish, wildlife, and aquatic species including species that are threatened and endangered.

Policy 5-2.8.1: Conduct an Inventory of Natural Habitats The City shall work cooperatively with others environmental interest groups and agencies having jurisdiction to conduct an inventories of natural habitat remaining within its boundaries.

Policy 5-2.8.2 Protect & Restore Areas of Existing Wildlife Habitat The City shall protect areas of important wildlife habitat through appropriate restoration and management of City owned land, through acquisition of remaining open space, and through application of measures to prevent the filling and development of wetlands.

Policy 5-2.8.3 Protect Shoreline Ecosystems The City shall continue to conserve and protect ecosystems occurring within the littoral zone of lakes by enforcing the City's shoreline protection ordinance.

Policy 5-2.8.4: Protect Listed Species The City shall maintain, to the best of its abilities, the populations of species listed as threatened, endangered and species of special concern, and shall restrict activities known to adversely affect the survival of these species.

Policy 5-2.8.5: Coordination with Environmental Agencies If development activity is proposed on or near property where listed species (endangered, threatened,

or species of special concern), the City shall coordinate with the Florida Fish and Wildlife Conservation Commission in determining whether a development permit can be issued.

Policy 5-2.8.6: Lake Management Programs The City shall maintain and enforce its Lake Management Program that prioritizes actions designed to protect, conserve and enhance natural shoreline habitat, aquatic and wildlife habitat and the preservation of threatened or endangered species that use surface waters for habitat.

Policy 5-2.8.7: Open Space in New Development Where natural habitat exists in areas of new development or where open space is required as part of new development, maintaining or restoring natural habitat should be an option for providing open space that may be required by the City.

OBJECTIVE 5-2.9: Soil & Shoreline Protection The City shall continually conserve and protect soils through the prevention of soil erosion.

Policy 5-2.9.1: Soil Erosion Prevention through Construction Activities The City shall protect and conserve the natural functions of existing soil resources by requiring construction activities to apply soil erosion prevention techniques to prevent soils from eroding onto adjacent properties, right-of-ways, lakes and streams.

Policy 5-2.9.2: Turf Grass & Landscaping Maintenance Ground plants, trees and turf grass shall be maintained consistent with landscape plans approved by the City. The City shall assure that site vegetation is maintained and complies with the approved landscape plan.

Policy 5-2.9.3: Lake Management Program The City shall continue to fund and operate tree and vegetation planting programs for lakefront areas and littoral zones. The City shall continue to manage the operation of boat docks and accessory structures that may occur along shoreline areas to prevent environmental degradation and ensure public safety.

Policy 5-2.9.4: Protection of Littoral Zone Vegetation The City shall enforce the shoreline protection regulations that provide controls that protect, conserve and enhance significant native vegetative species from destruction by development activities.

Policy 5-2.9.5: Construction Activities Consistent with Soil Types Where soil conditions do not appear to be consistent with proposed construction, the City shall require soil testing and evaluation as a prerequisite to building permits. The City shall limit land uses or construction techniques to best management principles and practices compatible with soil conditions specific to the site.

OBJECTIVE 5-2.10: Managing Disposal of Wastes The City shall assure that generation, storage, transport, and disposal of wastes in Winter Park are managed with the best available technology to protect environmental quality.

Policy 5-2.10.1: Collection of Residential Hazardous Wastes The City shall continue to operate an annual special collection day for household hazardous wastes and shall cooperate with the Orange County Environmental Protection Division to ensure the proper use, storage, disposal and recycling of hazardous materials.

Policy 5-2.10.2: Intergovernmental Coordination for Solid & Hazardous Waste The City shall continue to coordinate with the Orange County regarding countywide hazardous waste disposal and monitoring programs.

Policy 5-2.10.3: Managing Hazardous Waste The City shall ensure the appropriate locations for the use, handling or storage of hazardous wastes, including their proximity to public water system wellheads and surface water resources. The City shall protect subsurface aquifer water sources by restricting uses within a 500 foot radius surrounding wellfields to those that do not include hazardous materials of any type. Wellhead protection standards shall be consistent with any standards imposed by the SJRWMD or the FDEP.

Policy 5-2.10.4: Identification of Hazardous Waste The City shall continue its practice to require the identification of any and all hazardous wastes or materials used or stored by any licensed business within the City. This practice shall continue to be implemented through the review of a business licenses for information regarding hazardous materials to be use or stored on-site.

Policy 5-2.10.5: Monitor Small Quantity Generators The City shall utilize the Fire Department's business inspection program to monitor the businesses using hazardous materials, shall report all potential problems, and shall respond to any resultant problems.

Policy 5-2.10.6: Hazardous Waste Mismanagement The City shall utilize the Fire Department's Inspection Program, Public Works Department Inspection Program and the Code Enforcement Division Inspection Program to seek out, report and mandate corrections to any misuse of hazardous wastes to ensure the public safety and to avoid degradation to natural resources, including water quality.

OBJECTIVE 5-2.11: Protection of Archaeological & Historic Resources Land development and clearing activities shall incorporate appropriate measures to prevent damage to archaeologically and historically significant resources of local, regional, state, and federal significance.

Policy 5-2.11.1: Coordinate Archaeological & Historic Preservation Activities The City shall continue coordination with the Florida Department of State and the federal government to implement City, State, and federal policies for

identifying, preserving, and enhancing sites of historical and archaeological significance within Winter Park.

Policy 5-2.11.2: Preventing Adverse Impact of Development on Historic or Archaeological Sites The City shall continue programs to identify and preserve historic places and prevent development impacts from adversely disturbing archaeological sites that are identified during or before construction activity.

Policy 5-2.11.3: Protection of Designated Historic Sites The City shall continue to preserve historic and archaeological resources and protect these resources from adverse impacts of development through the site development process.

OBJECTIVE 5-2.12: Evaluation of the Conservation Element Effectiveness The City shall enforce the following policies to ensure that the Conservation Element protects the natural resources within the City of Winter Park.

Policy 5-2.12.1: Review the Impact of Changing Conditions on Conservation Policy The City shall monitor and evaluate significant changes in the characteristics of natural resources within Winter Park. Policy implications of such changes shall be examined and corrective measures shall be pursued. Conservation policies shall be refined as needed in order to remain responsive to evolving problems and issues.

Policy 5-2.12.2: Schedule, Budget & Implement Programmed Activities The timely scheduling, programming, budgeting and implementation of programmed conservation activities identified in this Element shall be evidence of the City's effectiveness in carrying out a systematic program for implementing conservation goals, objectives, and policies.

Policy 5-2.12.3: Coordinate with Public & Private Sectors While continually implementing and evaluating the Conservation Element, the City shall maintain a process of intergovernmental coordination as well as coordination with private sector groups interested in conservation policy and programs. The effectiveness of this approach shall be evaluated by the success of coordination mechanisms in resolving conservation problems and issues.

Policy 5-2.12.4: Achieve Effective Resolution of Conservation Goals, Objectives & Policies The effectiveness of the Conservation Element shall be measured by the City's success in achieving conservation goals, objectives, and policies. The Conservation Element incorporates a systematic planning process for identifying conservation problems and issues and implementing corrective measures.

Policy 5-2.12.5: Sustainability Action Plan The City's Sustainable Action Plan shall promote responsible and proactive decision-making that minimizes negative impacts and maintains balance between social, environmental, and economic growth. The Sustainability Action Plan shall serve as a roadmap depicting the City's current

and future sustainability goals and targets by a specific timeframe. The Sustainability Action Plan is a living document intended to be updated annually and evolve over time.

OBJECTIVE 5-2.13: Protection & Conservation of Ground Water Quantity and Quality The City of Winter Park shall protect and conserve groundwater quantity and quality so that future development activities are conducted in a manner that, at a minimum, meets state water quality standards.

Policy 5-2.13.1: Continue Monitoring Water Quality Near Wellfields Winter Park shall continue a monitoring program and procedures to monitor the water quality in the vicinity of the City's wellfields.

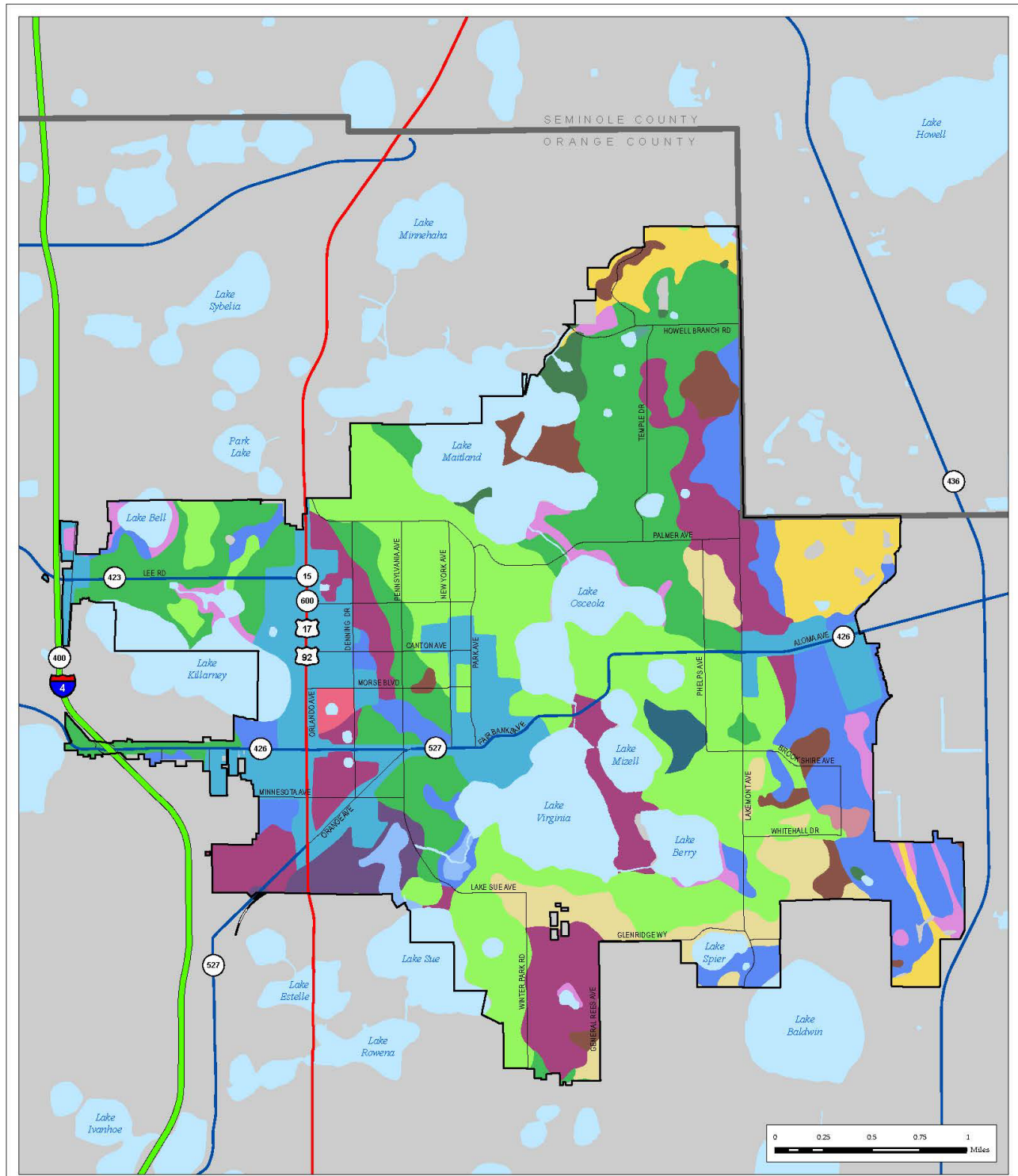
Policy 5-2.13.2: Mitigation of Impacts from Private Business The City shall work with the appropriate regulatory agency to mitigate adverse impacts, if detected, of private businesses which use, generate or produce any material characterized or listed on the Resource Conservation and Recovery Act's or the Environmental Protection Agency's hazardous waste lists.

Policy 5-2.13.3: Cooperation with St. Johns River Water Management District for Emergency Water Shortage Plan Winter Park shall cooperate with the St. Johns River Water Management District in the enforcement of the provisions of their emergency water shortage plans.

Policy 5-2.13.4: City to Take Action to Combat Sources of Pollution Winter Park shall, when identified, take action to combat sources of pollution that could threaten groundwater quality such as malfunctioning drain wells, improperly installed septic tanks, and improper disposal of hazardous waste areas.

CONSERVATION MAP SERIES

- CE-5-01:** Soil Associations
- CE-5-02:** Floodplains & Water Bodies
- CE-5-03:** Wetlands Inventory
- CE-5-04:** Florida Forever & Florida Managed Lands

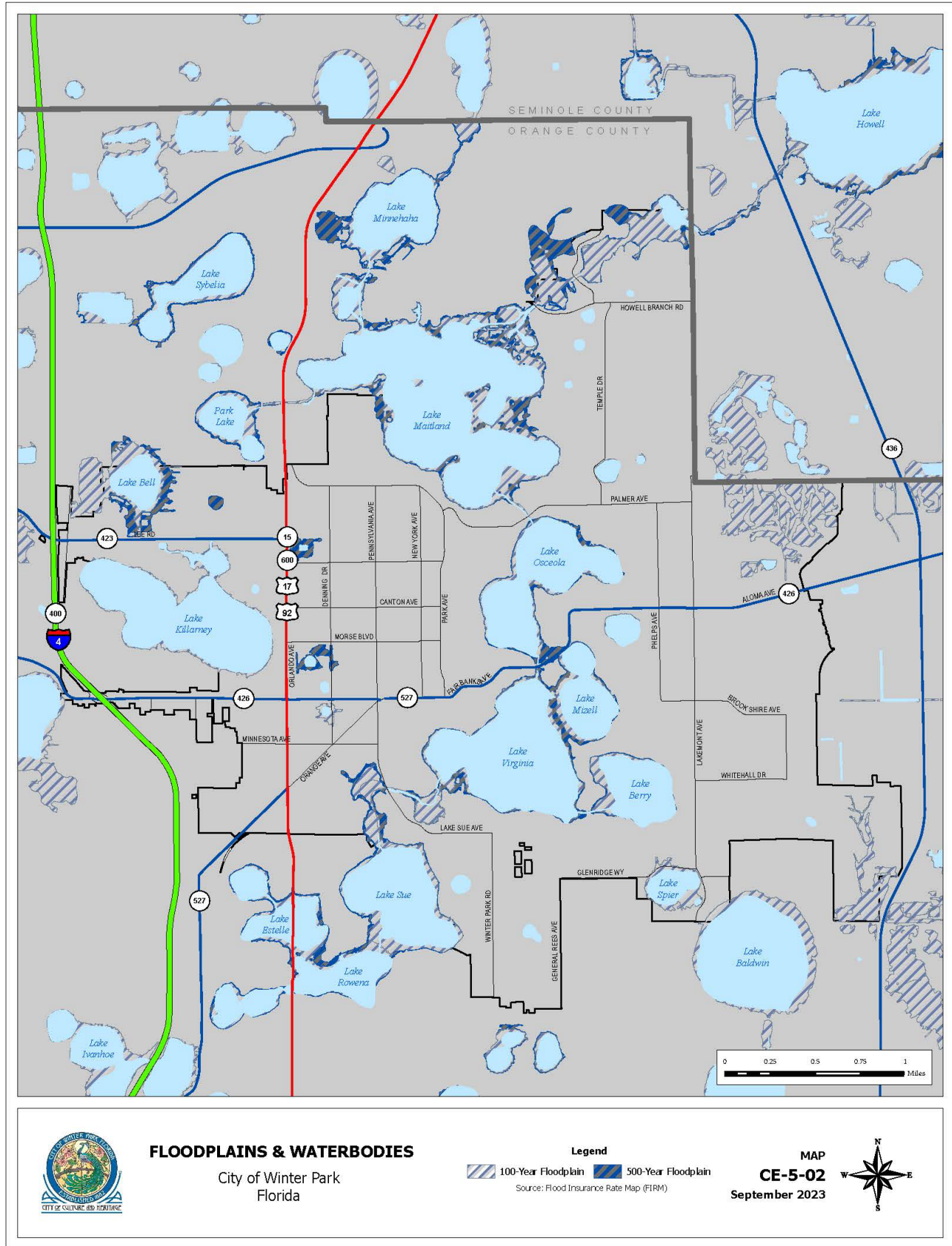


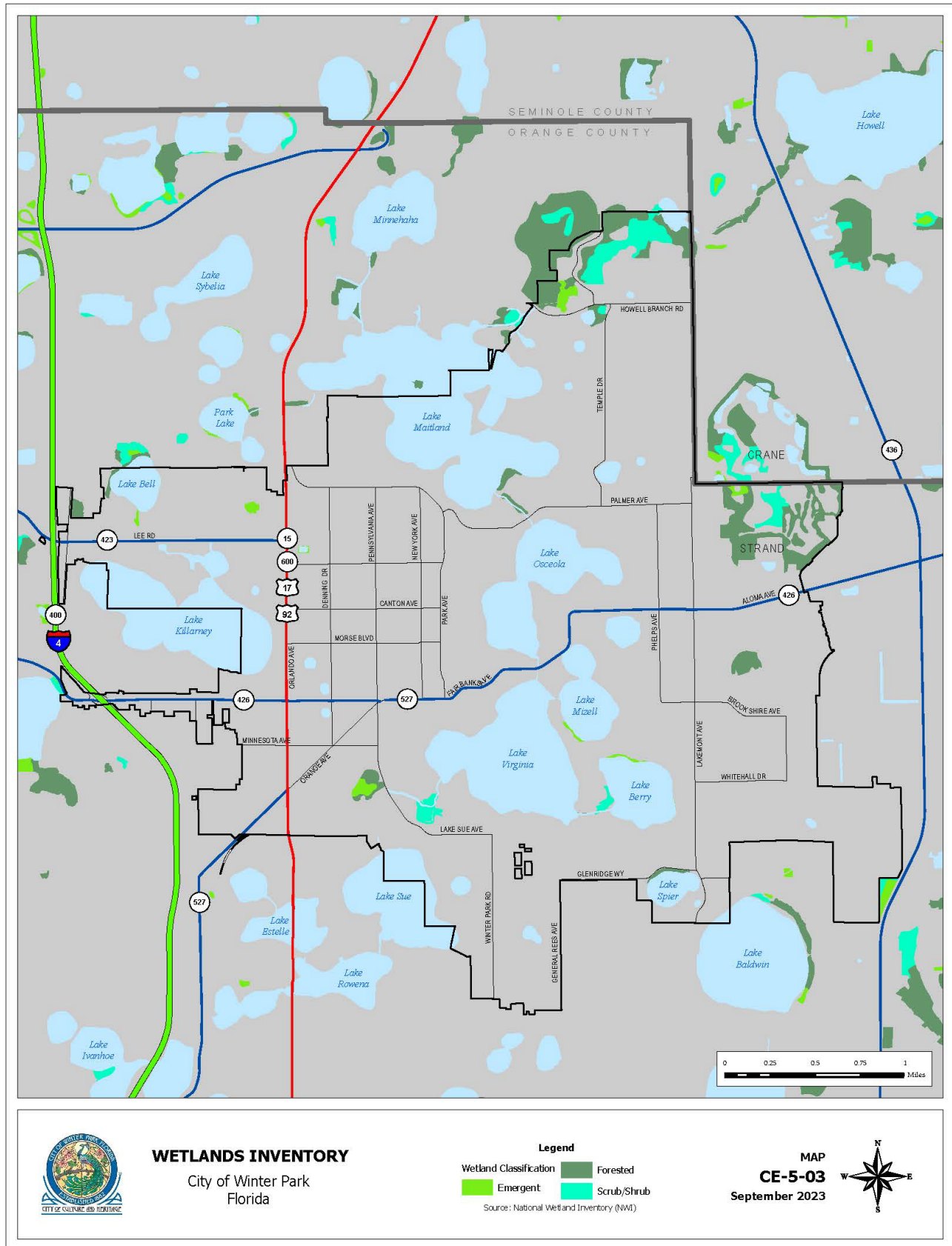
SOIL ASSOCIATIONS
City of Winter Park
Florida

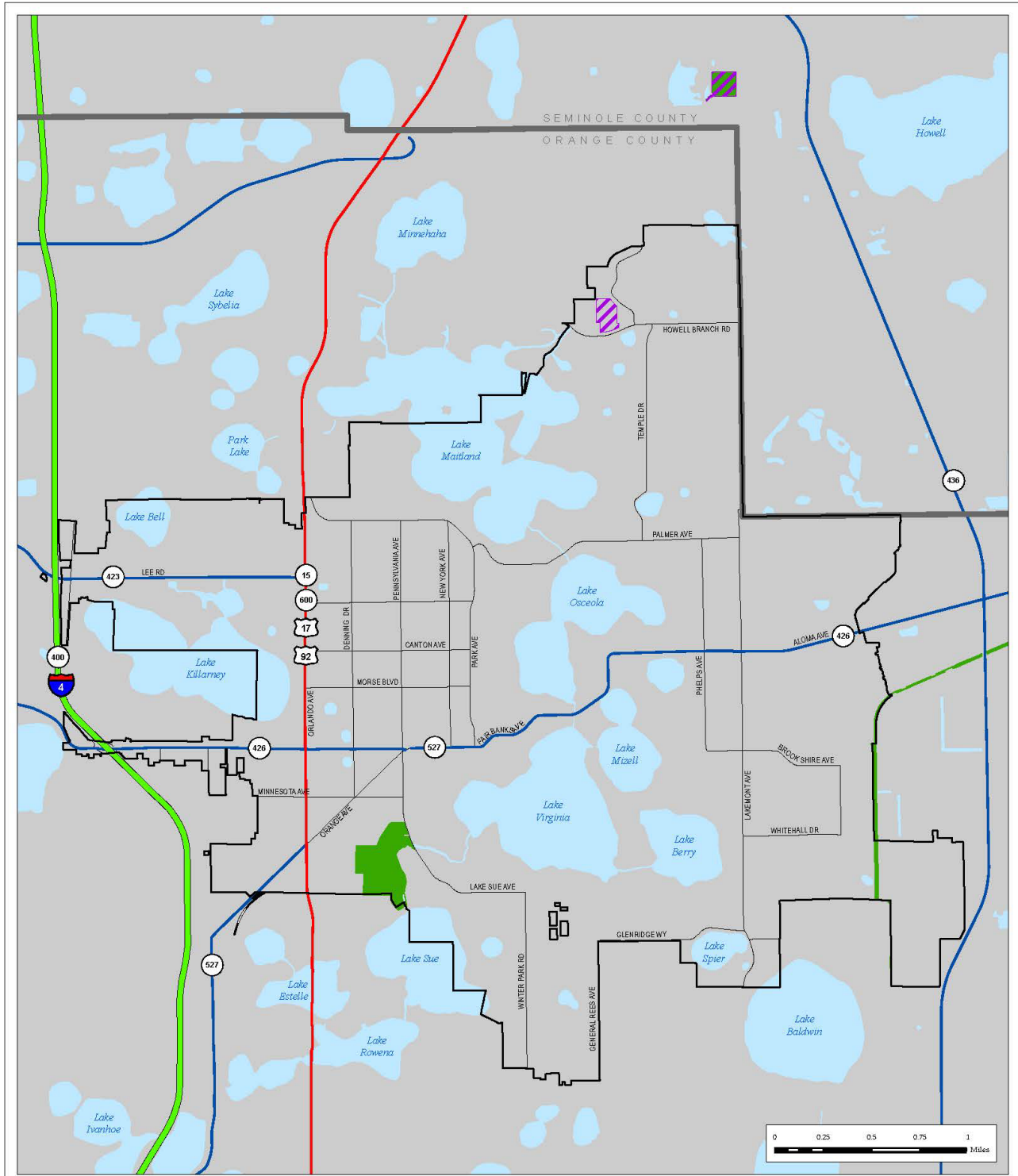
Soil Survey Geographic Database (SSURGO) Soil Types

Arents	Honohan	Pomello	St. Lucie
Basinger	Millhopper	Samsula	Taveres
Candler	Ona	Seffner	Urban Land
Florahome	Pits	Smyrna	Zolfo

MAP
CE-5-01
September 2023







FLORIDA FOREVER & FLORIDA MANAGED LANDS
 City of Winter Park, Florida

Legend
 [Hatched Pattern] Florida Forever Aquisitions
 [Green Fill] Local Florida Managed Areas (FNAI)
 Source: Florida Natural Areas Inventory & Fish and Wildlife Conservation Commission

MAP
CE-5-04
 September 2023