

# Winter Park Commons ■ Conceptual Renderings



City of Winter Park  
401 South Park Avenue  
Winter Park, FL 32789

PRSRT STD  
U.S. POSTAGE  
**PAID**  
ORLANDO FL  
ACG

## citywide PUBLIC NOTICE



### WINTER PARK COMMONS 821+831 W. SWOOPE AVE. & 800+810+830 W. WEBSTER AVE.

#### PUBLIC HEARINGS

Planning & Zoning Board  
TUESDAY 08.01.23\* @ 6 p.m.

City Commission  
WEDNESDAY 08.23.23\* @ 3:30 p.m.

\*Dates are subject to change. For updates,  
please access [cityofwinterpark.org/meetings](http://cityofwinterpark.org/meetings).

2023

City Hall Commission Chambers  
2nd Floor | 401 South Park Avenue  
Winter Park, Florida 32789

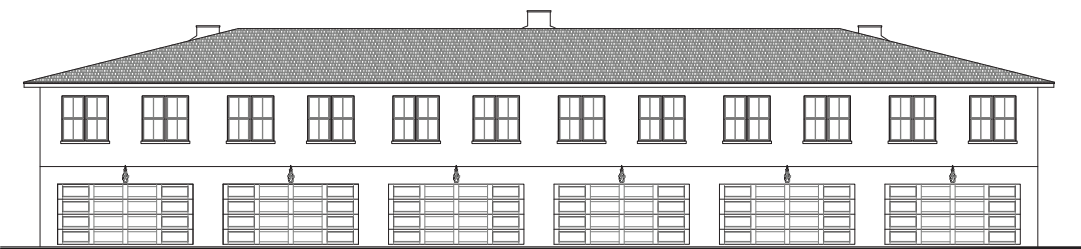
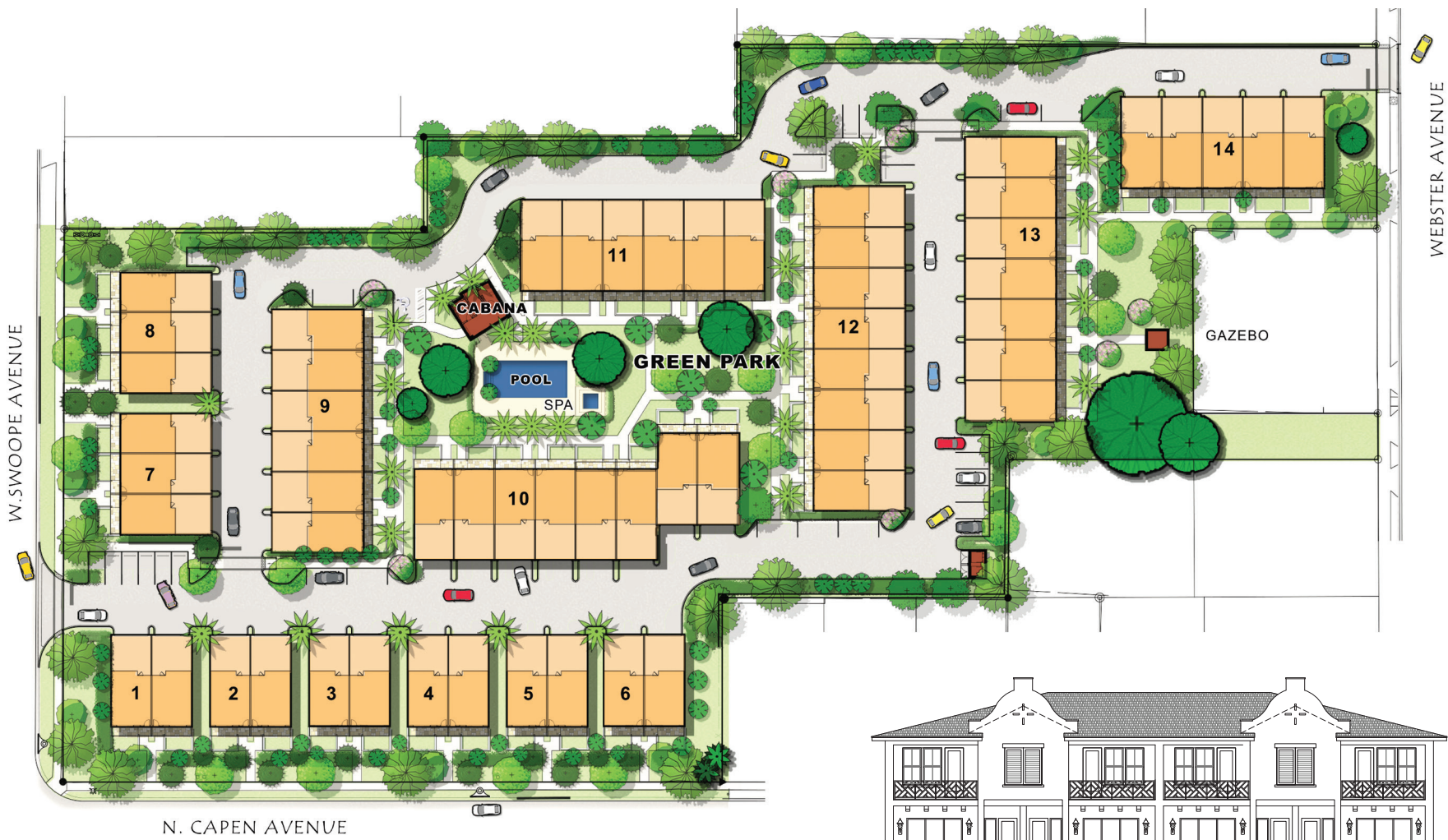
Metro Winter Park, LLC, is requesting to change the Comprehensive Plan Future Land Use designation from Institutional to Medium Density Residential to be consistent with the R-3 zoning of the properties and for Conditional Use approval for a two-story, 58-unit multi-family project on the properties at 821 & 831 W. Swoope Ave. and 800, 810 & 830 W. Webster Ave. The properties are currently developed with a vacant church that is to be demolished.

PLEASE NOTE: If a person decides to appeal any decision made by the Commission with respect to any matter considered at such meeting or hearing, he/she will need a record of the proceedings, and that, for such purpose, he/she may need to ensure that a verbatim record of the proceedings is made, which record includes the testimony and evidence upon which the appeal is to be based. (F.S. 286.0105).

Persons with disabilities needing assistance to participate in any of these proceedings should contact the Planning & Transportation Department at 407-599-3324 at least 48 hours in advance of the meeting.



# Winter Park Commons ■ Site Plan + Front & Rear Elevations



More detailed information can be accessed via the Planning & Zoning Board's agenda packet that will be available Tuesday, July 25, 2023, at [cityofwinterpark.org/meetings](https://cityofwinterpark.org/meetings).