



CITY OF WINTER PARK  
401 South Park Avenue  
Winter Park, FL 32789

PRSR STD  
U.S. POSTAGE  
PAID  
ORLANDO, FL  
ACG

# citywide PUBLIC NOTICE



## EDYTH BUSH CHARITABLE FOUNDATION 199 E. WELBOURNE AVE.

### PUBLIC HEARINGS

2019

Planning & Zoning Board  
TUESDAY 12-03-19\* @ 6 p.m.

City Commission  
MONDAY 01-13-20\* @ 3:30 p.m.

\*Dates are subject to change. Please visit  
[cityofwinterpark.org/citywide-notices](http://cityofwinterpark.org/citywide-notices) for any updates.

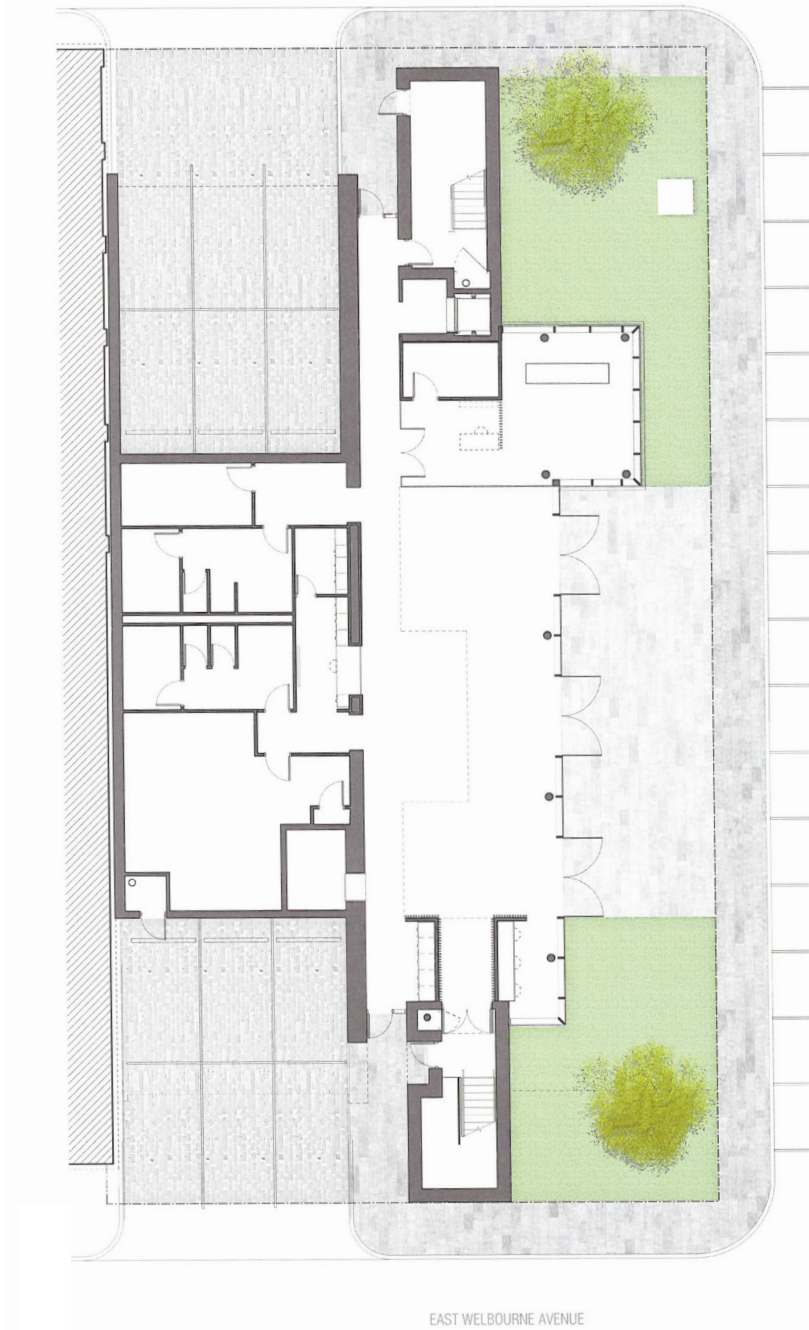
City Hall Commission Chambers  
2nd Floor | 401 S. Park Ave.  
Winter Park, Florida 32789

The Edyth Bush Charitable Foundation is requesting Conditional Use approval to redevelop their existing 3-story building at 199 E. Welbourne Ave., zoned C-2 with a new 3-story, 19,602-square-foot building.

NOTE: If a person decides to appeal any decision made by the Commission with respect to any matter considered at such meeting or hearing, he/she will need a record of the proceedings, and that, for such purpose, he/she may need to ensure that a verbatim record of the proceedings is made, which record includes the testimony and evidence upon which the appeal is to be based. (F.S. 286.0105).

Persons with disabilities needing assistance to participate in any of these proceedings should contact the Planning & Community Development Department at 407-599-3324 at least 48 hours in advance of the meeting.

# Edyth Bush Charitable Foundation ■ Site Plan



# Edyth Bush Charitable Foundation ■ Elevations



	Allowed	Proposed
Land Use	Office/Commercial	Office/Commercial
Zoning	C-2	C-2
Building Height	40 feet	42 feet
Building Size	21,812 square feet 200% FAR	19,602 square feet 179% FAR