



## City of Winter Park

### Americans with Disabilities Act in the Public Right-of-Way Transition Plan

# Table of Contents

1.0 Background and Purpose	3
2.0 Self-Evaluation and Self-Assessment	4
2.1 Methodology	4
2.2 Initial Evaluation and Assessment	6
3.0 Implementation Schedule and Funding for ADA Barriers	8
3.1 Implementation Schedule	8
3.2 Funding for ADA Barriers	10
4.0 Public Engagement and Involvement	10
4.1 External Agency Coordination	11
4.2 Grievance Procedure	11
4.3 Monitoring Progress	11
5.0 Summary	11
6.0 Appendices	13
6.1 Appendix A - Criteria for Data Collection	13
6.2 Appendix B - Data Collected and Existing Sidewalk Improvements	17
6.3 Appendix C - ADA Coordinator Contact	40
6.4 Appendix D - Public Outreach	41
6.5 Appendix E - Grievance Procedure	42

## 1.0 Background and Purpose

The Americans with Disabilities Act (ADA), enacted on July 26, 1990, is a civil rights statute (hereinafter referred to as ADA) that prohibits discrimination against people who have disabilities. The ADA is composed of five separate Titles (sections) that address different areas of public life, including all public and private places that are open to the general public. The five sections are as follows: Employment, State and Local Government Services, Public Accommodations, Telecommunications, and Miscellaneous Provisions. The ADA applies to all facilities, including both facilities built before and after 1990.

Title II of the ADA regarding State and Local Government specifically prohibits Public Agencies from discriminating against persons with disabilities in programs, services, or activities operated by the agency and tasks the agency to address the subject of making public services and public transportation accessible to those with disabilities. As required by Title II, State and Local Governments are required to perform self-evaluations of their current facilities relative to the accessibility requirements of ADA. The Public Agencies are then required to develop a Program Access Plan to address deficiencies.

The City of Winter Park ADA Transition Plan (Plan) for the Public Rights of Way (ROW) documents the City's goals and objectives in order to ensure that existing and future pedestrian facilities within the ROW are accessible for all people including those with disabilities. This document has been developed in accordance with Title II of the ADA, which requires public agencies to develop a transition plan that provides for the mitigation of barriers to accessibility. All updates to the City of Winter Park code affecting public ROW must be in compliance with this Plan and be in accordance with Title II of the ADA.

**This document has been created to specifically cover accessibility within the public rights of way and does not include information on City of Winter Park programs, practices, or building facilities not related to public rights of way. City managed pedestrian facilities in public rights of way typically include but are not limited to sidewalks, pedestrian paths, curb ramps, street crossings, driveway crossings, crosswalks, median crossings, public transit stops, and pedestrian activated signal systems.**

## 2.0 Self-Evaluation and Self-Assessment

Under Title II of the ADA, the City of Winter Park is required to perform a self-evaluation to examine the condition of the City's Pedestrian Access Route (PAR) and identify potential need for PAR infrastructure improvements. This includes sidewalk, curb ramps, bicycle/pedestrian trails, traffic control signals, and transit facilities that are located within the City's ROW. Any barriers to accessibility identified in the self-evaluation and the remedy to the identified barrier are set out in this Plan.

The City of Winter Park has completed the following steps to ensure this Plan satisfies all requirements of the ADA:

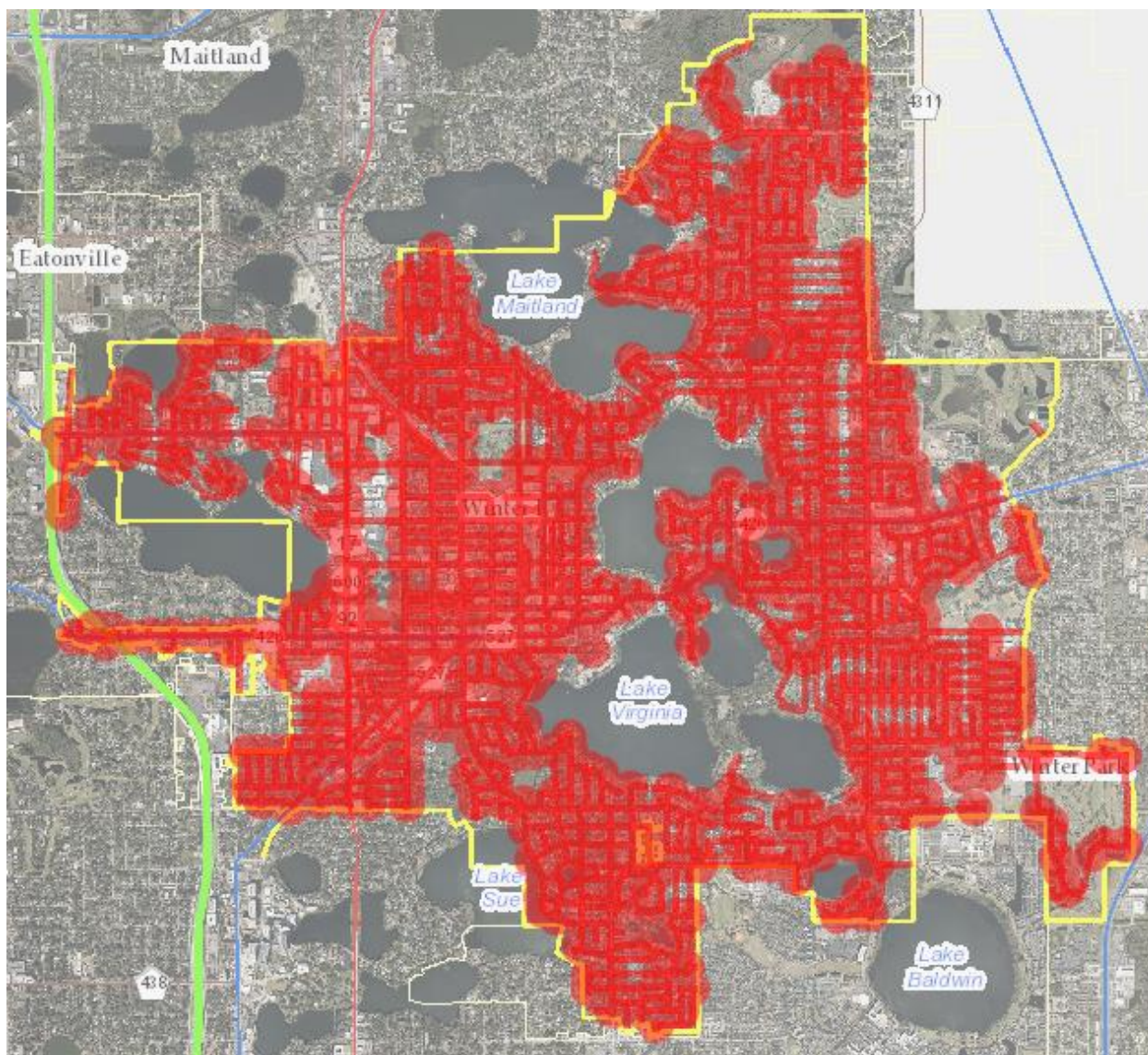
- (1) designated an ADA Coordinator;
- (2) provided notice to the public about ADA requirements;
- (3) established a grievance procedure (Appendix E);
- (4) developed internal design standards, specifications and details;  
and
- (5) assigned personnel for the development, completion, scheduling, implementation, and continued monitoring of this Plan.

### 2.1 Methodology

The first task involved in preparing an ADA Transition Plan is conducting an inventory of existing physical barriers to pedestrian facilities within the City's ROW. As of March 2022, the City of Winter Park's inventory of existing pedestrian facilities within the City ROW is as follows:

- 156.7 miles of sidewalk
- 1472 curb ramps
- 15.2 miles of bike paths
- 27 traffic control signals
- 60 bus and rail access points

The existing pedestrian facilities are provided in **Figure 1** below.



**Figure 1:** Existing Facilities in City of Winter Park for Data Collection and Analysis

To ensure proper evaluation and data collection, the City followed the Public Right-of-Way Accessibility Guidelines (PROWAG). Under the guidance of PROWAG, City staff has developed criteria for personnel to utilize while conducting evaluations in the field. The current standard for ADA can be found in the U.S. Access Board website (<https://www.access-board.gov/prowag/>). The criteria list can be found in **Appendix A**. Personnel evaluation and assessment shall include but is not limited to field reviews using smart levels, on-ground surveys, windshield surveys, aerial photo studies, or drawing reviews. Geographic Information System (GIS) shall be utilized to compile the criteria data collected in the field to determine if facilities are compliant with ADA standards. Data will continue to be



compiled with GIS and periodically updated as new field data and information are collected.

## 2.2 Initial Evaluation and Assessment

For the City's initial evaluation, the City first assessed primarily the Central Business District (CBD) shown in **Figure 2** due to the area's high pedestrian traffic demand. The results of this initial evaluation and sidewalk improvements for Fiscal Year (FY) 2020 and FY 2021 are provided in **Appendix B**.



**Figure 2:** Map of City of Winter Park's Central Business District

**Table 1** and **Table 2** provide the completed sidewalk repairs in FY 2020 and FY 2021, respectively. These repairs are through the City's existing maintenance procedure, which is outlined in **Section 3.0** of this Plan.

**Table 1:** Sidewalk Repairs completed in FY2020  
**FY2020 Existing Sidewalk Repairs**

<b># of Improvements</b>	<b>Total Area Improved (SF)</b>
284	45,587

**Table 2:** Sidewalk Repairs completed in FY2021  
**FY2021 Existing Sidewalk Repairs**

<b>Number of Improvements</b>	<b>Total Area Improved (SF)</b>
315	46,932

Based on the self-evaluation and self-assessment in most of the CBD, the data collected are provided in **Appendix B**, and the results are provided in **Table 3** for Curb Ramp Deficiencies and **Table 4** for Pedestrian Crossing Deficiencies. The City will continue to update the data collected in the master spreadsheet and in the City's GIS as the City moves forward with evaluating and addressing other locations within the City Limits. **Section 4.3** outlines how the City will continue to monitor the progress of this Plan.

**Table 3:** Curb Ramp Deficiencies in Central Business District as of March 2022

**Curb Ramp Deficiencies in Central Business District**

<b>Total Number of Observations</b>	<b>Total Number of Deficiencies</b>
103	97

**Table 4:** Pedestrian Crossing Deficiencies in Central Business District as of March 2022

**Pedestrian Crossing Deficiencies in Central Business District**

<b>Total Number of Observations</b>	<b>Total Number of Deficiencies</b>
60	35

The City will continue assessing all other locations throughout the City in the upcoming years, with priority of evaluation to be based on proximity to specific land uses such as schools, medical facilities, and other areas with high density pedestrian/bicycle traffic, as well as from the receipt of public comments. Lynx Bus stops and SunRail stations are other important areas that will be assessed for ADA standard compliance, and any issues found will be coordinated with the respective agencies.

Additional priority will be given to any location where an improvement project or alteration was constructed after January 26, 1991, and accessibility features were omitted.

While the initial evaluation only considered the CBD area, the City shall evaluate all pedestrian facilities within the City Limits by the end of City's FY 2025 or September 30, 2025. This Plan is a working, on-going document that will be monitored, evaluated, and updated as more evaluations and improvements are completed.

### 3.0 Implementation Schedule and Funding for ADA Barriers

The implementation procedures, schedule, and funding sources for ADA infrastructure improvements are described in this section. The City of Winter Park ADA Coordinator shall be responsible for the implementation of the ADA Transition Plan, and their contact information is included in **Appendix C**.

#### 3.1 Implementation Schedule

The City of Winter Park has several ways to perform ADA infrastructure improvement and modifications:

1. **New Sidewalk Capital Improvement Project** - City staff implements new sidewalks each fiscal year to reduce the number of



sidewalk gaps within the City Limits. While new sidewalks are being constructed, City staff will assess the conditions of the immediately adjacent, if any, pedestrian facilities, and if funding allows, any deficient facilities will be considered for improvement around the same time of the new sidewalk construction.

2. **Sidewalk and Curb Maintenance Program** - This program is currently programmed at a risk mitigation level of service which means that once ADA problems, usually uplifts, separations, crushed, or missing sections, are reported, the area is secured as necessary and repairs are performed promptly, usually within two weeks at the outset. This program will be changed to focus in areas with higher density of pedestrian and bicyclist traffic as mentioned in Section 2.2 above.
3. **Traffic Signal Maintenance** - City staff routinely inspects traffic signals to identify if there are any traffic signal components that do not meet current ADA standards. If deficiencies are found, then the information will be provided to the ADA coordinator, and a traffic signal project will be proposed to address the unmet standard.
4. **Milling & Resurfacing Program** - The City of Winter Park has a paving program that gets reassessed every two (2) to three (3) years. When streets are being repaved, City staff will inspect the sections of road that are being paved to determine if there are any ADA infrastructure deficiencies. If deficiencies are found, then the information will be provided to the ADA coordinator, and a project will be proposed to address the unmet standard.
5. **ADA Retrofit Capital Improvement Project** - In accordance to this Plan, City staff or its designated contractors will evaluate and monitor the conditions of Pedestrian facilities, and if specific areas are found to be deficient in ADA standards, then a CIP will be proposed to rectify the unmet standards. These projects will be incorporated into the Capital Improvement Program (CIP) on a case by case basis as determined by City of Winter Park staff.
6. **Other Capital Improvement Projects** - Any other new improvements proposed as a CIP, ADA infrastructures will be addressed at those specific CIP areas. Improvements include sidewalk and trail connections, parks, transit, signal upgrade, and paving. These projects will be incorporated into the Capital Improvement Program (CIP) on a case by case basis as determined by City of Winter Park staff.

In addition, City staff performs both residential and commercial private development plan reviews. Improvements of existing facilities that are deficient in ADA standards can be captured during the plan review process. Any proposed new pedestrian facilities can be evaluated to ensure they will be constructed to current ADA standards.

Once all of the existing pedestrian facility deficiencies are determined within the City Limits by FY2025, the intent is to improve and retrofit all of the found deficiencies in thirty (30) years by the end of FY2055 or September 30, 2055.

### 3.2 Funding for ADA Barriers

The City of Winter Park Public Works Department receives \$215,000 yearly to address sidewalk repair and ADA deficiencies. This fund is programmed to utilize contractors under direct City staff supervision. This program provides for the construction and maintenance of sidewalks, curbs, and curb cut ramps within the City in order to meet ADA criteria and to safely and efficiently move pedestrians and cyclists, including those with disabilities.

The City of Winter Park Planning & Transportation Department receives \$100,000 yearly as a Capital Improvement Projects (CIP) fund to implement new sidewalks and any improvements for pedestrians and bicyclists.

The City will consider using other CIP funds to rectify ADA infrastructure deficiencies or add facilities meeting ADA standards in the specific CIP area.

City staff will request for more funding on an as-needed basis each fiscal year.

Other funding sources will be considered from research and discussion with other Agencies such as Florida Department of Transportation (FDOT), Metroplan Orlando, and Orange County for any Federal and State grants or funding opportunities dedicated for ADA improvement projects.

## 4.0 Public Engagement and Involvement

The City of Winter Park recognizes that public engagement and involvement is an important component to the Plan. To engage in and encourage public involvement, a copy of this Plan shall be published on the City's website and the ADA notice for this Plan has been advertised through social media as an invitation to provide any comments or request for ADA improvements shown in **Appendix D**.

Any input from the community will be gathered and used to help define additional priority areas and projects for improvements within the jurisdiction. In addition, a public meeting for any discussion regarding ADA will be hosted through the City of Winter Park Transportation Advisory Board annually at the beginning of each fiscal year.

#### 4.1 External Agency Coordination

Many other agencies are responsible for pedestrian facilities within the jurisdiction of FDOT and Orange County. Lynx and SunRail are also agencies that impact the mobility of City of Winter Park residents. City staff will coordinate with those agencies to track and assist in the facilitation of the elimination of accessibility barriers along their routes. In addition, City staff will coordinate with Lynx and SunRail for any transit improvements and addressing pedestrian facility deficiencies.

#### 4.2 Grievance Procedure

As a regulatory requirement of ADA, each agency is required to publish and adopt a grievance procedure providing for prompt and equitable resolution of complaints alleging any action that would be prohibited under Title II. A draft of this public notice is provided in **Appendix E**. If users of City of Winter Park pedestrian facilities and services believe the City has not provided reasonable accommodation under Title II, they have the right to file a grievance utilizing this public notice.

In accordance with 28 CFR 35.107(b), the City of Winter Park has developed a grievance procedure for the purpose of the prompt and equitable resolution of citizens' complaints, concerns, comments, and other grievances. This grievance procedure is outlined in **Appendix E**.

#### 4.3 Monitoring Progress

This document will continue to be updated as conditions within the City of Winter Park evolve. The appendices in this document will be updated annually at the end of each fiscal year, while the main body of the document will be updated in five (5) years with a future update schedule to be developed at that time. With each main body update, a public comment period will occur at the Transportation Advisory Board at the beginning of each fiscal year to continue public engagement and involvement.

### 5.0 Summary

The purpose of this Plan is to ensure that helpful information and successful implementation practices concerning the development and updating of this document are recognized by City staff, consultants and residents. The ideal

conclusion to this process is the elimination of barriers and the acceptance of requirements of ADA as an everyday reality in all future work.

The City of Winter Park believes that the program, standards, policies, and procedures presented above collectively form a comprehensive program that incorporates accessibility in a timely manner into public rights-of-way. The City shall continue to procure all necessary design and construction contracts required for sidewalk improvements to satisfy all ADA sections and provisions as they pertain to public rights-of-way.

## 6.0 Appendices

### 6.1 Appendix A - Criteria for Data Collection

#### **Sidewalks**

Street Name: Click or tap here to enter text.

Cross-Street #1: Click or tap here to enter text.

Cross-Street #2: Click or tap here to enter text.

Location: (North ☐ /South ☐ /East ☐ /West ☐)

Is a sidewalk present? (Yes ☐ /No ☐)

Are there any sidewalk gaps? (Yes ☐ /No ☐)

Length (in feet): Click or tap here to enter text.

Minimum Width (in feet): Click or tap here to enter text.

If width is less than 5', is there a 5' x 5' (minimum) passing zone at a spacing of 200' or less? (Yes ☐ /No ☐)

Slope (percentage): Click or tap here to enter text.

Cross-slope (percentage): Click or tap here to enter text.

Are there sidewalk obstructions present (sign pole, light pole, hydrant, etc)?  
(Yes ☐ /No ☐)

If yes, what? Click or tap here to enter text.

Width measurement at obstruction (in feet): Click or tap here to enter text.

Length of obstruction (in feet): Click or tap here to enter text.

Vertical Clearance Obstruction (less than 6.67' vertical clearance)?  
(Yes ☐ /No ☐)

Notes: Click or tap here to enter text.

## Curb Ramps

Street Name: Click or tap here to enter text.

Cross-Street #1: Click or tap here to enter text.

Cross-Street #2: Click or tap here to enter text.

Location: (Northeast ☐ /Northwest ☐ /Southeast ☐ /Southwest ☐)

Is there a curb ramp? (Yes ☐ /No ☐)

Is there a sidewalk? (Yes ☐ /No ☐)

Is there a marked pedestrian crossing? (Yes ☐ /No ☐)

Type of ramp:  
(perpendicular ☐ /parallel ☐ /combination ☐ /diagonal ☐ /other ☐)

Curb ramp slope (percentage): Click or tap here to enter text.

Gutter slope (percentage): Click or tap here to enter text.

Cross-slope (percentage): Click or tap here to enter text.

Flare slope (percentage): Click or tap here to enter text.

Ramp length (from bottom of ramp to top of ramp in inches):  
Click or tap here to enter text.

Ramp width (at narrowest point in inches): Click or tap here to enter text.

Top landing width (in inches): Click or tap here to enter text.

Bottom Landing width (in inches): Click or tap here to enter text.

Are there detectable warnings (truncated domes)? (Yes ☐ /No ☐)

Detectable Warning Color:  
(Brick Red ☐ /Yellow ☐ /Black ☐ /No Color ☐ /Other ☐)

Detectable warning placement (measured from back of curb to near side in inches): Click or tap here to enter text.

Notes: Click or tap here to enter text.



## **Pedestrian Crossings**

Street Name: Click or tap here to enter text.

Cross-Street Name: Click or tap here to enter text.

Location: (North ☐ /South ☐ /East ☐ /West ☐)

Is there a marked crosswalk? (Yes ☐ /No ☐)

Is there a curb ramp? (Yes ☐ /No ☐)

Is there a ped paddle? (Yes ☐ /No ☐)

Crossing surface material:

(Brick ☐ /Concrete ☐ /Asphalt ☐ /Dirt ☐ /Other ☐)

Crosswalk width (measured inside line to inside line in inches):

Click or tap here to enter text.

Slope (percentage): Click or tap here to enter text.

Cross-slope (percentage): Click or tap here to enter text.

Signalized Pedestrian Crossing? (Yes ☐ /No ☐)

Midblock Crossing? (Yes ☐ /No ☐)

Is there a push-button? (Yes ☐ /No ☐)

Does push-button have 2" raise diameter? (Yes ☐ /No ☐)

Height of button (in inches above walking surface): Click or tap here to enter text.

Level clear space adjacent to push-button? (Yes ☐ /No ☐)

Level clear space dimension #1 (in inches): Click or tap here to enter text.

Level clear space dimension #2 (in inches): Click or tap here to enter text.

Notes: Click or tap here to enter text.

## **Bus Stops – Boarding and Alighting**

Lynx Routes serviced: Click or tap here to enter text.

Is there a curb? (Yes ☐ /No ☐)

Surface material:

(Asphalt ☐ /Concrete ☐ /Dirt ☐ /Grass ☐ /Gravel ☐ /Other ☐)

Width (measured perpendicular to the curb in inches):

Click or tap here to enter text.

Length (measured parallel to curb in inches): Click or tap here to enter text.

Is there a sidewalk present? (Yes ☐ /No ☐)

Is boarding and alighting area connected to sidewalk? (Yes ☐ /No ☐)

Is there a Wheel Chair Obstacle? (Yes ☐ /No ☐)

Is there a Shelter? (Yes ☐ /No ☐)

Notes: Click or tap here to enter text.

## 6.2 Appendix B - Data Collected and Existing Sidewalk Improvements

### Sidewalk Improvements FY2020

#### Existing Sidewalks Repairs

Location	Date	Length (FT)	Width (FT)	Area (SF)	Count
Interlachen Ave (428)	9/30/2020	180	5	900	1
Interlachen Ave (Handicap Ramp)	9/30/2020	0	0	0	1
Interlachen Ave (Handicap Ramp)	9/30/2020	0	0	0	1
Lyman Ave Residence Condominiums	9/30/2020	55	5	275	1
Interlachen Ave (Handicap Ramp)	9/30/2020	0	0	0	1
Interlachen Ave @ Lyman Ave	9/30/2020	65	5	325	1
Palmer Ave (1020)	9/23/2020	60	5	300	1
Palmer Ave (1120)	9/23/2020	25	5	125	1
Palmer Ave (1130)	9/23/2020	25	5	125	1
Palmer Ave (1140)	9/23/2020	40	5	200	1
Palmer Ave (1190)	9/23/2020	25	5	125	1
Palmer Ave (916)	9/22/2020	175	5	875	1
Palmer Ave (1020)	9/17/2020	95	5	475	1
Palmer Ave (968)	9/17/2020	75	5	375	1
Palmer Ave (53)	9/9/2020	25	5	125	1
N Park Ave (1180)	9/9/2020	35	5	175	1
N Park Ave (1150)	9/9/2020	75	5	375	1
N Park Ave (Handicap Ramp)	9/9/2020	0	0	0	1
N Park Ave (2100)	9/9/2020	15	5	75	1
Dunraven (1949)	9/2/2020	10	5	50	1
Dunraven (1033)	9/2/2020	15	5	75	1
Dunraven (1025)	9/2/2020	30	5	150	1
Dunraven (1007)	9/2/2020	30	5	150	1
Dunraven (1001)	9/2/2020	15	5	75	1
Dunraven Rd (963)	9/2/2020	5	5	25	1
Dunraven Rd (957)	9/2/2020	15	5	75	1
Summerfield Rd (1949)	9/2/2020	25	5	125	1
Summerfield Rd (1955)	9/2/2020	15	5	75	1
Palmer Ave (1640)	8/18/2020	30	5	150	1
Palmer Ave (1616)	8/18/2020	20	5	100	1
Palmer Ave (1540)	8/18/2020	35	5	175	1
Palmer Ave (1530)	8/18/2020	15	5	75	1
Palmer Ave (1520)	8/18/2020	10	5	50	1
Palmer Ave (1510)	8/18/2020	20	5	100	1
Palmer Ave (1500)	8/18/2020	25	5	125	1
Winter Park Rd (2502)	8/6/2020	15	5	75	1
Winter Park Rd (2414)	8/6/2020	40	5	200	1
Winter Park Rd (2410)	8/6/2020	20	5	100	1
Winter Park Rd (2702)	8/6/2020	40	5	200	1
Winter Park Rd (Handicap Ramp)	8/6/2020	0	0	0	1
Winter Park Rd (2614)	8/6/2020	10	5	50	1

Location	Date	Length (FT)	Width (FT)	Area (SF)	Count
Winter Park Rd (Handicap Ramp)	8/6/2020	0	0	0	1
Palmer Ave (1351)	7/31/2020	45	5	225	1
Palmer Ave (1361)	7/31/2020	25	5	125	1
Palmer Ave (1391)	7/31/2020	10	5	50	1
Palmer Ave (1421)	7/31/2020	10	5	50	1
Palmer Ave (1441)	7/31/2020	65	5	325	1
Palmer Ave (1440)	7/31/2020	20	5	100	1
Palmer Ave (1680)	7/27/2020	15	5	75	1
Palmer Ave (1700)	7/27/2020	10	5	50	1
Palmer Ave (1710)	7/27/2020	5	5	25	1
Palmer Ave (1716)	7/27/2020	65	5	325	1
Palmer Ave (1720)	7/27/2020	10	5	50	1
Palmer Ave (1726)	7/27/2020	15	5	75	1
Preserve Point Dr (1283)	7/15/2020	110	5	550	1
Preserve Point Dr (1275)	7/15/2020	20	5	100	1
Preserve Point Dr (1259)	7/15/2020	15	5	75	1
Preserve Point Dr (Handicap Ramp)	7/15/2020	0	0	0	1
Lookout Landing Cir (1619)	7/9/2020	30	5	150	1
Lookout Landing Cir (1627)	7/9/2020	20	5	100	1
Lookout Landing Cir (1635)	7/9/2020	45	5	225	1
Lookout Landing Cir (1643)	7/9/2020	40	5	200	1
Lookout Landing Cir (1647)	7/9/2020	5	5	25	1
Lookout Landing Cir (1641)	7/9/2020	15	5	75	1
Oneco Dr (1720 Apron)	6/17/2020	21	9	189	1
Oneco Dr (1711 Apron)	6/17/2020	22	9	198	0
Oneco Dr (1711)	6/17/2020	25	5	125	1
Oneco Dr (1710 Apron)	6/17/2020	25	9	225	0
Oneco Dr (1710)	6/17/2020	5	5	25	1
Oneco Dr (1700 Apron)	6/17/2020	22	9	198	0
Oneco Dr (1700)	6/17/2020	5	5	25	1
Oneco Dr (1701 Apron)	6/17/2020	20	9	180	0
Oneco Dr (1701)	6/17/2020	10	5	50	1
Oneco Dr (1690 Apron)	6/17/2020	22	9	198	0
Oneco Dr (1690)	6/17/2020	5	5	25	1
Oneco Dr (1691 Apron)	6/17/2020	22	9	198	1
Oneco Dr (1680 Apron)	6/17/2020	23	9	207	0
Oneco Dr (1680)	6/17/2020	15	5	75	1
Oneco Dr (1681 Apron)	6/17/2020	23	9	207	0
Oneco Dr (1681)	6/17/2020	5	5	25	1
Oneco Dr (1670 Apron)	6/17/2020	23	9	207	0
Oneco Dr (1670)	6/17/2020	15	5	75	1
Oneco Dr (1671 Apron)	6/17/2020	26	9	234	1
Blairshire Cir (617)	7/2/2020	5	5	25	1
Blairshire Cir (621)	7/2/2020	25	5	125	1
Blairshire Cir (625)	7/2/2020	10	5	50	1
Blairshire Cir (629)	7/2/2020	25	5	125	1
Blairshire Cir (633)	7/2/2020	5	5	25	1

Location	Date	Length (FT)	Width (FT)	Area (SF)	Count
Blairshire Cir (671)	7/2/2020	5	5	25	1
Blairshire Cir (674)	7/2/2020	5	5	25	1
Blairshire Cir (675)	7/2/2020	5	5	25	1
Blairshire Cir (679)	7/2/2020	5	5	25	1
Blairshire Cir (683)	7/2/2020	25	5	125	1
Blairshire Cir (695)	7/2/2020	20	5	100	1
Blairshire Cir (699)	7/2/2020	20	5	100	1
Brookshire Ave (2579)	6/24/2020	5	5	25	1
Brookshire Ave (2547)	6/24/2020	5	5	25	1
Brookshire Ave (2525)	6/24/2020	5	5	25	1
Brookshire Ave (2503)	6/24/2020	35	5	175	1
Brookshire Ave (2487)	6/24/2020	20	5	100	1
Brookshire Ave (2423)	6/24/2020	25	5	125	1
Brookshire Ave (2400)	6/24/2020	20	5	100	1
Brookshire Ave (2401)	6/24/2020	5	5	25	1
Brookshire Ave (in front of school)	6/24/2020	50	5	250	1
Bridgeport Dr (1326)	6/4/2020	10	5	50	1
Bridgeport Dr (1320)	6/4/2020	5	5	25	1
Bridgeport Dr (1312)	6/4/2020	25	5	125	1
Bridgeport Dr (1306)	6/4/2020	25	5	125	1
Bridgeport Dr (1300)	6/4/2020	15	5	75	1
Demmetree Dr (1742)	6/4/2020	45	5	225	1
Bridgeport Dr (across tennis courts)	6/4/2020	50	5	250	1
Strathhaven Rd (1919)	5/28/2020	15	5	75	1
Strathhaven Rd (1925)	5/28/2020	25	5	125	1
Strathhaven Rd (1937)	5/28/2020	15	5	75	1
Strathhaven Rd (1943)	5/28/2020	10	5	50	1
Strathhaven Rd (1949)	5/28/2020	15	5	75	1
Strathhaven Rd (1951)	5/28/2020	15	5	75	1
Lakemont Ave (1040)	5/28/2020	55	5	275	1
Braemar Dr (1039)	5/28/2020	15	5	75	1
Coldstream Dr (2366)	5/20/2020	15	5	75	1
Coldstream Dr (2356)	5/20/2020	20	5	100	1
Coldstream Dr (2346)	5/20/2020	25	5	125	1
Coldstream Dr (2330)	5/20/2020	5	5	25	1
Coldstream Dr (2326)	5/20/2020	35	5	175	1
Coldstream Dr (2316)	5/20/2020	5	5	25	1
Coldstream Dr (2300)	5/20/2020	5	5	25	1
Coldstream Dr (2305)	5/20/2020	20	5	100	1
Coldstream Dr (2270)	5/20/2020	15	5	75	1
Coldstream Dr (2210)	5/20/2020	5	5	25	1
Coldstream Dr (2215)	5/20/2020	5	5	25	1
Coldstream Dr (2235)	5/20/2020	15	5	75	1
Cady Way (2360)	5/14/2020	30	5	150	1
Coldstream Dr (2365)	5/14/2020	55	5	275	1
Coldstream Dr (2355)	5/14/2020	5	5	25	1
Coldstream Dr (2345)	5/14/2020	20	5	100	1

Location	Date	Length (FT)	Width (FT)	Area (SF)	Count
Coldstream Dr (2325)	5/14/2020	5	5	25	1
Coldstream Dr (2315)	5/14/2020	30	5	150	1
Coldstream Dr (2305)	5/14/2020	20	5	100	1
Old England Ave (875)	5/14/2020	0	0	0	1
Cady Way (2360)	5/7/2020	15	5	75	1
Cady Way (2340)	5/7/2020	15	5	75	1
Cady Way (2320)	5/7/2020	45	5	225	1
Cady Way (2310)	5/7/2020	20	5	100	1
Cady Way (2300)	5/7/2020	5	5	25	1
Cady Way (2250)	5/7/2020	5	5	25	1
Cady Way (2240)	5/7/2020	15	5	75	1
Cady Way (2230)	5/7/2020	5	5	25	1
Cady Way (2210)	5/7/2020	5	5	25	1
Cady Way (2200)	5/7/2020	20	5	100	1
Cady Way/Greene Dr (Handicap Ramp)	5/7/2020	0	0	0	1
Cady Way in front of school	5/1/2020	145	5	725	1
Green Dr in front of school	5/1/2020	140	5	700	1
Willard Ave (1911)	4/23/2020	65	4.5	292.5	1
Willard Ave (140)	4/23/2020	25	4.5	112.5	1
Lyndale Blvd (1451)	4/23/2020	25	4.5	112.5	1
Lyndale Blvd (1371)	4/23/2020	25	4.5	112.5	1
Lyndale Blvd (1360)	4/23/2020	15	4.5	67.5	1
Lyndale Blvd (1365)	4/23/2020	15	5	75	1
St Andrews Boulevard Concrete Wall	4/23/2020	25	0.5	12.5	1
St Andrews Boulevard Concrete Wall	4/16/2020	100	0.5	50	1
St Andrews Boulevard Handicap Ramp	4/16/2020	0	0	0	1
St Andrews Boulevard Handicap Ramp	4/16/2020	0	0	0	1
Oak Grove Ct (105)	3/19/2020	110	4.5	495	1
Oak Grove Ct (155)	3/19/2020	15	4.5	67.5	1
Oak Grove Ct (140)	3/19/2020	5	4.5	22.5	1
Oak Grove Ct (119)	3/19/2020	20	4.5	90	1
Oak Grove Ct (123)	3/19/2020	8	4.5	36	1
Oak Grove Ct (153)	3/19/2020	15	4.5	67.5	1
Oak Grove Ct (139)	3/19/2020	15	4.5	67.5	1
Oak Grove Ct (147)	3/19/2020	115	4.5	517.5	1
Oak Grove Ct (168)	3/19/2020	20	4.5	90	1
Oak Grove Ct (160)	3/19/2020	10	4.5	45	1
Oak Grove Ct (128)	3/19/2020	15	4.5	67.5	1
Oak Grove Ct (116)	3/19/2020	20	4.5	90	1
Old England Ave (875)	3/16/2020	35	5	175	1
Old England Ave (875 Apron)	3/16/2020	18	11	198	0
Winter Park Hills	1/29/2020	80	5	400	1
Neola Trail (1525)	1/29/2020	60	5	300	1
Verona Trail (2615)	1/29/2020	15	5	75	1
Verona Trail (2616)	1/29/2020	10	5	50	1
Verona Trail (2621)	1/29/2020	5	5	25	1
Manden Trail (2611)	1/29/2020	15	5	75	1



Location	Date	Length (FT)	Width (FT)	Area (SF)	Count
Manden Trail (2625)	1/29/2020	10	5	50	1
Manden Trail (2631)	1/29/2020	15	5	75	1
Manden Trail (2637)	1/29/2020	35	5	175	1
Manden Trail (2638)	1/29/2020	5	5	25	1
Manden Trail (2612)	1/29/2020	10	5	50	1
Manden Trail (2606)	1/29/2020	15	5	75	1
Manden Trail (1618)	1/29/2020	10	5	50	1
Tioga Trail (1619)	1/23/2020	15	5	75	1
Tioga Trail (1625)	1/23/2020	10	5	50	1
Tioga Trail (1681)	1/23/2020	15	5	75	1
Tioga Trail (2436)	1/23/2020	10	5	50	1
Tioga Trail (2430)	1/23/2020	15	5	75	1
Tioga Trail (2418)	1/23/2020	20	5	100	1
Tioga Trail (2412)	1/23/2020	10	5	50	1
Tioga Trail (2406)	1/23/2020	10	5	50	1
Tioga Trail (2411)	1/23/2020	20	5	100	1
Tioga Trail (2417)	1/23/2020	10	5	50	1
Tioga Trail (2423)	1/23/2020	35	5	175	1
Tioga Trail (1624)	1/23/2020	100	5	500	1
Tioga Trail (1616)	1/23/2020	35	5	175	1
Verona Trail (2610)	1/23/2020	35	5	175	1
Park Point Ln (1265)	1/14/2020	60	5	300	1
Park Point Ln (1250)	1/14/2020	10	5	50	1
Park Point Ln (1260)	1/14/2020	60	5	300	1
Neola Trail (1520)	1/14/2020	5	5	25	1
Neola Trail (1526)	1/14/2020	50	5	250	1
Mandan Trail (2507)	1/14/2020	10	5	50	1
Mandan Trail (2427)	1/14/2020	10	5	50	1
Mandan Trail (2421)	1/14/2020	15	5	75	1
Mandan Trail (2411)	1/14/2020	20	5	100	1
Mandan Trail (2414)	1/14/2020	5	5	25	1
Mandan Trail (2424)	1/14/2020	10	5	50	1
Mandan Trail (2428)	1/14/2020	10	5	50	1
Tioga Trail/Mandan Trail	1/14/2020	55	5	275	1
Mallard Cir (442)	1/9/2020	15	5	75	1
Mallard Cir (450)	1/9/2020	25	5	125	1
Mallard Cir (2216)	1/9/2020	15	5	75	1
Mallard Cir (2208)	1/9/2020	5	5	25	1
Mallard Cir (2152)	1/9/2020	20	5	100	1
Mallard Cir (2144)	1/9/2020	40	5	200	1
Mallard Cir (2128)	1/9/2020	15	5	75	1
Mallard Cir (2120)	1/9/2020	15	5	75	1
Mallard Cir (2104)	1/9/2020	25	5	125	1
Briarwood Dr (447)	1/9/2020	20	5	100	1
Wing Ln (304)	1/9/2020	30	5	150	1
Wing Ln (312)	1/9/2020	15	5	75	1
Turkey Run (2245)	1/9/2020	60	5	300	1

Location	Date	Length (FT)	Width (FT)	Area (SF)	Count
Turkey Run (2237)	1/9/2020	30	5	150	1
Briarwood Dr (448)	1/2/2020	25	5	125	1
Briarwood Dr (456)	1/2/2020	45	5	225	1
Mallard Cir (2111)	1/2/2020	20	5	100	1
Mallard Cir (2127)	1/2/2020	25	5	125	1
Mallard Cir (2112)	1/2/2020	10	5	50	1
Mallard Cir (2104)	1/2/2020	40	5	200	1
Mallard Cir (2010)	1/2/2020	25	5	125	1
Turkey Run (2001)	12/21/2019	55	5	275	1
Turkey Run (415)	12/21/2019	40	5	200	1
Turkey Run (407)	12/21/2019	15	5	75	1
Briarwood Dr (455)	12/21/2019	75	5	375	1
Briarwood Dr (447)	12/21/2019	25	5	125	1
Briarwood Dr (439)	12/21/2019	40	5	200	1
Briarwood Dr (421)	12/21/2019	15	5	75	1
Grouse Ct (389)	12/21/2019	25	5	125	1
Setter Trail (402)	12/21/2019	20	5	100	1
Setter Trail (410)	12/21/2019	10	5	50	1
Setter Trail (426)	12/21/2019	15	5	75	1
Turkey Run (322)	12/12/2019	100	5	500	1
Turkey Run (306)	12/12/2019	35	5	175	1
Turkey Run (2164)	12/12/2019	30	5	150	1
Turkey Run (2172)	12/12/2019	20	5	100	1
Turkey Run (407)	12/12/2019	10	5	50	1
Turkey Run (337)	12/12/2019	20	5	100	1
Turkey Run (329)	12/12/2019	20	5	100	1
Turkey Run (321)	12/12/2019	15	5	75	1
Turkey Run (2147)	12/12/2019	15	5	75	1
Turkey Run (2155)	12/12/2019	15	5	75	1
Turkey Run (2163)	12/12/2019	20	5	100	1
Turkey Run (2179)	12/12/2019	20	5	100	1
Turkey Run (2187)	12/12/2019	5	5	25	1
Anchorage Ct (1016)	12/4/2019	25	5	125	1
Anchorage Ct (1017)	12/4/2019	15	5	75	1
Anchorage Ct (100)	12/4/2019	135	5	675	1
Anchorage Ct (108 curb replace)	12/4/2019	40	12	480	1
Anchorage Ct (1000)	11/26/2019	20	5	100	1
Anchorage Ct (1008)	11/26/2019	25	5	125	1
Mckean Cir (1005)	11/26/2019	100	5	500	1
Mckean Cir (Handicap Ramp)	11/26/2019	0	0	0	1
Palmer Ave/Anchorage Ct	11/21/2019	165	5	825	1
Mayfield Ave (800)	11/21/2019	105	5	525	1
Pennsylvania Ave (1124)	11/13/2019	30	5	150	1
Pennsylvania Ave (1144)	11/13/2019	20	5	100	1
Misty Ln (484)	11/13/2019	15	5	75	1
Waterfall Ln (390)	11/13/2019	15	5	75	1
Church Parking lot	11/13/2019	40	5	200	1

Location	Date	Length (FT)	Width (FT)	Area (SF)	Count
Beloit Ave (460)	11/13/2019	50	5	250	1
Pennsylvania Ave (1104)	11/7/2019	15	5	75	1
Beloit Ave (461)	11/7/2019	10	5	50	1
Beloit Ave (459)	11/7/2019	30	5	150	1
Beloit Ave (455)	11/7/2019	15	5	75	1
Beloit Ave (453)	11/7/2019	15	5	75	1
Beloit Ave (443)	11/7/2019	15	5	75	1
Beloit Ave (361)	11/7/2019	15	5	75	1
Beloit Ave (359)	11/7/2019	25	5	125	1
Beloit Ave (345)	11/7/2019	10	5	50	1
Beloit Ave (339)	11/7/2019	10	5	50	1
Beloit Ave (335)	11/7/2019	20	5	100	1
Beloit Ave (331)	11/7/2019	20	5	100	1
Beloit Ave (450)	11/7/2019	55	5	275	1
Beloit Ave (360)	11/7/2019	8	5	40	1
Beloit Ave (327)	11/7/2019	10	5	50	1
Beloit Ave (321)	11/7/2019	5	5	25	1
Beloit Ave (313)	11/7/2019	5	5	25	1
Beloit Ave (301)	11/7/2019	40	5	200	1
Beloit Ave (Handicap Ramp)	11/7/2019	0	0	0	1
Randell Rd (2351 Apron)	10/30/2019	18	18	324	1
Dunbar St (730)	10/30/2019	20	5	100	1
Dunbar St (720)	10/30/2019	20	5	100	1
Dunbar St (710)	10/30/2019	25	5	125	1
Dunbar St (690)	10/30/2019	15	5	75	1
Dunbar St (678)	10/30/2019	20	5	100	1
Dunbar St (662)	10/30/2019	20	5	100	1
Dunbar St (648)	10/30/2019	5	5	25	1
Dunbar St (630)	10/30/2019	20	5	100	1
Dunbar St (618)	10/30/2019	10	5	50	1
Dunbar St (600)	10/30/2019	20	5	100	1
Park Ave (538,528, 518)	10/22/2019	68	18	1224	1
Depugh St (720)	10/22/2019	10	5	50	1
Depugh St (710)	10/22/2019	10	5	50	1
Depugh St (690)	10/22/2019	25	5	125	1
Depugh St (678)	10/22/2019	15	5	75	1
Depugh St (662)	10/22/2019	5	5	25	1
Depugh St (654)	10/22/2019	5	5	25	1
Depugh St (642)	10/22/2019	15	5	75	1
Depugh St (618)	10/22/2019	5	5	25	1
Depugh St (600)	10/22/2019	15	5	75	1
Capen Ave (438)	10/22/2019	20	5	100	1
Depugh St (707)	10/16/2019	15	5	75	1
Depugh St (691)	10/16/2019	10	5	50	1
Depugh St (677)	10/16/2019	15	5	75	1
Depugh St (663)	10/16/2019	30	5	150	1
Depugh St (709 Curb)	10/16/2019	55	5	275	1

Location	Date	Length (FT)	Width (FT)	Area (SF)	Count
Capen Ave (438 Curb)	10/16/2019	40	5	200	1
Morgan Stanly Ave	10/16/2019	8	8	64	1
Swoope Ave (845)	10/7/2019	55	5	275	1
Swoope Ave (843)	10/7/2019	20	5	100	1
Swoope Ave (821)	10/7/2019	75	5	375	1
Canton Ave (Corner Lot)	10/7/2019	15	5	75	1
Virginia Ave (445)	10/7/2019	20	5	100	1
Virginia Ave (Handicap Ramp)	10/7/2019	0	0	0	1
Comstock Ave/Virginia Ave (Handicap Ramp)	10/7/2019	0	0	0	1
Swoope Ave (731)	10/10/2019	25	5	125	1
Swoope Ave (721)	10/10/2019	5	5	25	1
Swoope Ave (663)	10/10/2019	25	5	125	1
Swoope Ave (601)	10/10/2019	45	5	225	1
Swoope Ave (600)	10/10/2019	60	5	300	1
Swoope Ave (540)	10/10/2019	40	5	200	1
Swoope Ave (602)	10/10/2019	5	5	25	1
Swoope Ave (648)	10/10/2019	20	5	100	1
Swoope Ave (662)	10/10/2019	5	5	25	1
Swoope Ave (690)	10/10/2019	10	5	50	1
Swoope Ave (710)	10/10/2019	10	5	50	1
Swoope Ave (720)	10/10/2019	5	5	25	1
Swoope Ave (730)	10/10/2019	5	5	25	1
Capen Ave (541)	10/10/2019	35	5	175	1

## Sidewalk Improvements FY2021

### Existing Sidewalks Repairs

Location	Date	Length (FT)	Width (FT)	Area (SF)	Count
Interlachen Ave (428)	9/30/2020	180	5	900	1
Symonds Dr (Pennsylvania Ave going west)	9/29/2021	170	5	850	1
Morse Blvd from Haper St towards east	9/21/2021	220	8	1760	0
Morse Blvd from Haper St towards east	9/15/2021	200	8	1600	0
Morse Blvd from Haper St towards east	9/8/2021	200	8	1600	0
Morse Blvd from Haper St towards east	9/1/2021	250	8	2000	1
Park Ave (526)	8/19/2021	95	5	475	1
Demetree Dr (1718)	8/11/2021	55	5	275	1
Demetree Dr (1712)	8/11/2021	10	5	50	1
Demetree Dr (1706)	8/11/2021	15	5	75	1
Alexka Dr (1200)	8/11/2021	35	5	175	1
Alexka Dr (1217)	8/11/2021	15	5	75	1
Alexka Dr (1229)	8/11/2021	35	5	175	1
Germaine Dr (1203)	8/9/2021	40	5	200	1
Germaine Dr (1215)	8/9/2021	10	5	50	1
Germaine Dr (1227)	8/9/2021	20	5	100	1
Demetree Dr (1707)	8/9/2021	40	5	200	1
Alexa Dr (1739)	8/9/2021	15	5	75	1
Lake Berry Dr (1754)	8/9/2021	50	5	250	1
Burning Tree Ln (1270)	8/2/2021	45	5	225	1
Burning Tree Ln (1266)	8/2/2021	10	5	50	1
Burning Tree Ln (1262)	8/2/2021	15	5	75	1
Burning Tree Ln (1258)	8/2/2021	10	5	50	1
Burning Tree Ln (1246)	8/2/2021	10	5	50	1
Burning Tree Ln (1238)	8/2/2021	25	5	125	1
Burning Tree Ln (1230)	8/2/2021	55	5	275	1
Blairshire Circle (625)	6/28/2021	60	5	300	1
Pennsylvania Ave	7/27/2021	25	10	250	1
Shady Park	7/27/2021	85	6	510	0
Shady Park	7/27/2021	70	7	490	1
Garden Drive/Denning Drive (3 Handicap Ramps)	7/20/2021	0	0	0	3
Valencia College Parking Lot (2 Handicap Ramps)	7/20/2021	0	0	0	2
Wing Ln (320 Driveway)	7/13/2021	54	52	2808	1
Eastham Rd (2716 Driveway)	7/6/2021	16	17	272	1
Louisiana Dr (1177)	6/30/2021	10	5	50	1
Louisiana Dr (1155 Driveway)	6/30/2021	13	28	364	1
Louisiana Dr (1155)	6/30/2021	55	5	275	1
Louisiana Dr (1133)	6/30/2021	10	5	50	1
Blairshire Circle (617)	6/28/2021	15	5	75	1
Blairshire Circle (625)	6/28/2021	60	5	300	1
Webster Ave (931)	6/21/2021	35	5	175	1
Golfside Dr (1507)	6/21/2021	55	5	275	1
Golfside Dr (1515)	6/21/2021	15	5	75	1
Golfside Dr (1523)	6/21/2021	55	5	275	1

Location	Date	Length (FT)	Width (FT)	Area (SF)	Count
Golfside Dr (1531)	6/21/2021	30	5	150	1
Golfside Dr (1539)	6/21/2021	20	5	100	1
Langholm Dr (680 Driveway)	5/4/2021	16	21	336	1
Dallas Ave (1 Handicap Ramp)	4/28/2021	0	0	0	1
Dallas Ave (500)	4/28/2021	15	5	75	1
Grove Ave (Verizon)	4/28/2021	10	5	50	1
Grove Ave (Regions)	4/28/2021	105	5	525	1
Grove Ave (Chipotle)	4/28/2021	30	6	180	1
Dallas Ave (240)	4/26/2021	60	5	300	1
Broadview Ave (350)	4/26/2021	40	5	200	1
Broadview Ave (444)	4/26/2021	85	5	425	1
Broadview Ave (451)	4/26/2021	20	5	100	1
Broadview Ave (499)	4/26/2021	30	5	150	1
Broadview Ave (350)	4/21/2021	20	5	100	1
Broadview Ave (2 Handicap Ramps)	4/21/2021	0	0	0	2
Broadview Ave (120)	4/21/2021	20	5	100	1
Shoreview Ave (500)	4/21/2021	40	5	200	1
Shoreview Ave (518)	4/21/2021	25	5	125	1
Shoreview Ave (350)	4/21/2021	25	5	125	1
Alberta Dr (1370)	4/7/2021	25	5	125	1
Bryan Ave (1550)	4/7/2021	20	5	100	1
Jo-Al-Ca Ave (460)	4/7/2021	85	5	425	1
Jo-Al-Ca Ave (450)	4/7/2021	30	5	150	1
Jo-Al-Ca Ave (444)	4/7/2021	15	5	75	1
Shepard Lane (501 Driveway)	4/5/2021	8	25	200	1
Shepard Lane (543)	4/5/2021	35	5	175	1
Shepard Lane (521)	4/5/2021	10	5	50	1
Shepard Lane (501)	4/5/2021	40	5	200	1
Shepard Lane (481)	4/5/2021	5	5	25	1
Alberta Dr (1314)	4/1/2021	15	5	75	1
Alberta Dr (1308)	4/1/2021	5	5	25	1
Alberta Dr (1309)	4/1/2021	40	5	200	1
Alberta Dr (1327)	4/1/2021	65	5	325	1
Alberta Dr (1375)	4/1/2021	45	5	225	1
Alberta Dr (1395)	4/1/2021	15	5	75	1
Hibiscus Ave (1501)	3/29/2021	20	5	100	1
Hibiscus Ave (1443)	3/29/2021	15	5	75	1
Hibiscus Ave (1425)	3/29/2021	10	5	50	1
Hibiscus Ave (1401)	3/29/2021	20	5	100	1
Hibiscus Ave (1385)	3/29/2021	35	5	175	1
Hibiscus Ave (1375)	3/29/2021	25	5	125	1
Hibiscus Ave (1365)	3/29/2021	10	5	50	1
Hibiscus Ave (1334)	3/29/2021	15	5	75	1
Hibiscus Ave (1331)	3/29/2021	5	5	25	1
Temple Dr (2100)	3/29/2021	10	5	50	1
Sunset Dr (2031)	3/23/2021	25	5	125	1
Sunset Dr (2 Handicap Ramps)	3/23/2021	0	0	0	2



Location	Date	Length (FT)	Width (FT)	Area (SF)	Count
Sunset Dr (2030)	3/23/2021	15	5	75	1
Hibiscus Ave (1330)	3/23/2021	15	5	75	1
Hibiscus Ave (1340)	3/23/2021	40	5	200	1
Hibiscus Ave (1360)	3/23/2021	10	5	50	1
Hibiscus Ave (1370)	3/23/2021	10	5	50	1
Hibiscus Ave (1420)	3/23/2021	30	5	150	1
Phelps Ave (220)	3/17/2021	5	5	25	1
Genius Dr (526)	3/17/2021	25	5	125	1
Genius Dr (534)	3/17/2021	10	5	50	1
Genius Dr (542)	3/17/2021	20	5	100	1
Genius Dr (550)	3/17/2021	30	5	150	1
Genius Dr (566)	3/17/2021	15	5	75	1
Genius Dr (574)	3/17/2021	20	5	100	1
Genius Dr (602)	3/17/2021	45	5	225	1
Genius Dr (610)	3/17/2021	5	5	25	1
Genius Dr (627)	3/15/2021	10	5	50	1
Genius Dr (583)	3/15/2021	25	5	125	1
Genius Dr (558)	3/15/2021	20	5	100	1
Genius Dr (567)	3/15/2021	20	5	100	1
Genius Dr (559)	3/15/2021	35	5	175	1
Genius Dr (543)	3/15/2021	25	5	125	1
Genius Dr (535)	3/15/2021	15	5	75	1
Genius Dr (527)	3/15/2021	30	5	150	1
Chapman Circle (1303)	3/10/2021	30	5	150	1
Preserve Point Dr (Water park)	3/10/2021	15	5	75	1
Preserve Point Dr (1284)	3/10/2021	25	5	125	1
Preserve Point Dr (1268)	3/10/2021	15	5	75	1
Preserve Point Dr (Entry way)	3/10/2021	90	5	450	1
Palmer Ave (751)	3/9/2021	20	5	100	1
Palmer Ave (740)	3/9/2021	65	5	325	1
Palmer Ave (720)	3/9/2021	15	5	75	1
Palmer Ave (700)	3/9/2021	10	5	50	1
Palmer Ave (630)	3/9/2021	5	5	25	1
Palmer Ave (610)	3/9/2021	35	5	175	1
Palmer Ave (Vacant)	3/4/2021	100	5	500	1
Hibiscus Ave (1 Handicap Ramp)	3/2/2021	0	0	0	1
Hibiscus Ave (1691)	3/2/2021	10	5	50	1
Hibiscus Ave (1689)	3/2/2021	10	5	50	1
Hibiscus Ave (1683)	3/2/2021	15	5	75	1
Hibiscus Ave (1675)	3/2/2021	35	5	175	1
Hibiscus Ave (1665)	3/2/2021	20	5	100	1
Hibiscus Ave (1657)	3/2/2021	15	5	75	1
Hibiscus Ave (1649)	3/2/2021	5	5	25	1
Hibiscus Ave (1625)	3/2/2021	10	5	50	1
Hibiscus Ave (1617)	3/2/2021	15	5	75	1
Hibiscus Ave (1698)	2/23/2021	20	6	120	1
Hibiscus Ave (1698)	2/23/2021	18	5	90	1

Location	Date	Length (FT)	Width (FT)	Area (SF)	Count
Hibiscus Ave (1682)	2/23/2021	45	5	225	1
Hibiscus Ave (1676)	2/23/2021	25	5	125	1
Hibiscus Ave (1666)	2/23/2021	15	5	75	1
Hibiscus Ave (1658)	2/23/2021	15	5	75	1
Hibiscus Ave (1632)	2/23/2021	5	5	25	1
Hibiscus Ave (1600)	2/23/2021	25	5	125	1
Brookshire Ave (2574)	2/18/2021	15	5	75	1
Whitehall Circle (2409)	2/18/2021	36	5	180	1
Whitehall Circle (2406)	2/18/2021	5	5	25	1
Whitehall Circle (2410)	2/18/2021	35	5	175	1
Whitehall Circle (2414)	2/18/2021	20	5	100	1
Whitehall Circle (2422)	2/18/2021	5	5	25	1
Whitehall Circle (2426)	2/18/2021	15	5	75	1
Whitehall Circle (2434)	2/18/2021	10	5	50	1
Edinburgh Dr N	2/15/2021	132	5	660	1
Glenwood Dr (2045)	2/11/2021	20	5	100	1
Glenwood Dr (2100)	2/11/2021	150	5	750	1
Edinburgh Dr N (1 Handicap Ramp)	2/11/2021	0	0	0	1
Edinburgh Dr N (320)	2/11/2021	55	5	275	1
Edinburgh Dr N (242)	2/11/2021	40	5	200	1
Edinburgh Dr N (2 Handicap Ramps)	2/4/2021	0	0	0	2
Edinburgh Dr N	2/4/2021	162	5	810	1
Denning Dr (920)	2/1/2021	20	5	100	1
Denning Dr (880)	2/1/2021	15	5	75	1
Denning Dr (850)	2/1/2021	5	5	25	1
Denning Dr (840)	2/1/2021	20	5	100	1
Webster Ave (901)	1/28/2021	95	5	475	1
Winter Park Village (2 Handicap Ramps)	1/28/2021	50	6	300	2
Summerfield Rd (2421)	1/25/2021	30	5	150	1
Summerfield Rd (2417)	1/25/2021	30	5	150	1
Summerfield Rd (1 Handicap Ramp)	1/25/2021	0	0	0	1
Summerfield Rd (2401)	1/25/2021	25	5	125	1
Summerfield Rd (2369)	1/25/2021	25	5	125	1
Summerfield Rd (2359)	1/25/2021	25	5	125	1
Summerfield Rd (2337)	1/25/2021	15	5	75	1
Darcey Dr (1 Handicap Ramp)	1/20/2021	0	0	0	1
Darcey Dr (699)	1/20/2021	45	5	225	1
Berwick Dr (1 Handicap Ramp)	1/20/2021	0	0	0	1
Berwick Dr (665)	1/20/2021	35	5	175	1
Berwick Dr (657)	1/20/2021	20	5	100	1
Whitehall Circle (1900)	1/14/2021	20	5	100	1
Whitehall Circle (2452)	1/14/2021	20	5	100	1
Whitehall Circle (2448)	1/14/2021	15	5	75	1
Whitehall Circle (2444)	1/14/2021	5	5	25	1
Whitehall Circle (1 Handicap Ramp)	1/14/2021	0	0	0	1
Whitehall Circle (2434)	1/14/2021	20	5	100	1
Whitehall Circle (2429)	1/14/2021	10	5	50	1

Location	Date	Length (FT)	Width (FT)	Area (SF)	Count
Whitehall Circle (2421)	1/14/2021	5	5	25	1
Whitehall Circle (2413)	1/14/2021	25	5	125	1
Whitehall Circle (2405)	1/14/2021	20	5	100	1
Whitehall Circle (2401)	1/14/2021	5	5	25	1
Whitehall Circle (2473)	1/11/2021	5	5	25	1
Whitehall Circle (2477)	1/11/2021	10	5	50	1
Whitehall Circle (2481)	1/11/2021	10	5	50	1
Whitehall Circle (2485)	1/11/2021	25	5	125	1
Whitehall Circle (2489)	1/11/2021	5	5	25	1
Whitehall Circle (2493)	1/11/2021	5	5	25	1
Whitehall Circle (2497)	1/11/2021	5	5	25	1
Green Dr (2 Handicap Ramps)	1/11/2021	0	0	0	2
Green Dr (699)	1/11/2021	50	5	250	1
Interlachen Ave N (Handicap Ramp)	1/8/2021	0	0	0	1
Interlachen Ave N (324)	1/8/2021	20	5	100	1
Canton Ave (211-269)	1/8/2021	115	5	575	1
Knoles Ave (360)	1/8/2021	35	5	175	1
Georgia Ave (960)	1/6/2021	20	5	100	1
Georgia Ave (920)	1/6/2021	90	5	450	1
Georgia Ave (1 ramp)	1/6/2021	0	0	0	1
Georgia Ave (890)	1/6/2021	15	5	75	1
Georgia Ave (870)	1/6/2021	10	5	50	1
Georgia Ave (802)	1/6/2021	30	5	150	1
Lake Waumpi Dr (2449)	12/28/2020	15	5	75	1
Lake Waumpi Dr (2443)	12/28/2020	50	5	250	1
Drum Street (1742)	12/28/2020	25	5	125	1
Drum Street (1736)	12/28/2020	5	5	25	1
Lolissa Lane (2972)	12/28/2020	30	5	150	1
Lolissa Lane (2966)	12/28/2020	5	5	25	1
Lolissa Lane (2960)	12/28/2020	30	5	150	1
Lolissa Lane (2924)	12/28/2020	15	5	75	1
Lolissa Lane (2931)	12/21/2020	20	5	100	1
Lolissa Lane (2949)	12/21/2020	15	5	75	1
Lolissa Lane (2936)	12/21/2020	5	5	25	1
Lolissa Lane (2930)	12/21/2020	20	5	100	1
Lolissa Lane (2924)	12/21/2020	55	5	275	1
Lolissa Lane (2913)	12/21/2020	25	5	125	1
Lolissa Lane (2907)	12/21/2020	40	5	200	1
Lochberry Rd (1936)	12/16/2020	16	20	320	1
Comstock Ave (540)	12/8/2020	10	5	50	1
Comstock Ave (Vacant)	12/8/2020	45	5	225	1
Comstock Ave (Vacant)	12/8/2020	25	5	125	1
Comstock Ave (400)	12/8/2020	60	5	300	1
Comstock Ave (Vacant)	12/8/2020	15	5	75	1
Comstock Ave (360)	12/8/2020	5	5	25	1
Comstock Ave (320)	12/8/2020	10	5	50	1
Comstock Ave (646)	12/8/2020	10	5	50	1

Location	Date	Length (FT)	Width (FT)	Area (SF)	Count
Comstock Ave (664)	12/8/2020	10	5	50	1
Comstock Ave (730)	12/8/2020	20	5	100	1
Comstock Ave (154)	12/8/2020	10	5	50	1
Comstock Ave (814)	12/8/2020	30	5	150	1
Comstock Ave (Vacant)	12/8/2020	30	5	150	1
New York Ave (501)	12/8/2020	20	5	100	1
Lakeview Dr (904)	12/8/2020	4	6	24	1
Lakeview Dr (Handicap Ramp)	12/8/2020	0	0	0	1
Golfside Dr (906)	12/3/2020	5	5	25	1
Golfside Dr (908)	12/3/2020	25	5	125	1
Golfside Dr (930)	12/3/2020	20	5	100	1
Golfside Dr (938)	12/3/2020	25	5	125	1
Golfside Dr (1012)	12/3/2020	20	5	100	1
Golfside Dr (1020)	12/3/2020	10	5	50	1
Golfside Dr (1036)	12/3/2020	20	5	100	1
Golfside Dr (1044)	12/3/2020	40	5	200	1
Summerfield Rd (262)	12/3/2020	25	5	125	1
Summerfield Rd (Handicap Ramp)	12/3/2020	0	5	0	1
Laurel Rd (1950)	12/1/2020	25	5	125	1
Laurel Rd (1930)	12/1/2020	25	5	125	1
Laurel Rd (1961)	12/1/2020	35	5	175	1
Laurel Rd (1861)	12/1/2020	25	5	125	1
Laurel Rd (Handicap Ramp)	12/1/2020	0	0	0	1
Laurel Rd (1771)	12/1/2020	10	5	50	1
Laurel Rd (1741)	12/1/2020	15	5	75	1
Laurel Rd (1551)	11/23/2020	10	5	50	1
Laurel Rd (1630)	11/23/2020	55	5	275	1
Laurel Rd (1650)	11/23/2020	40	5	200	1
Golfside Dr (1005) - Apron	11/18/2020	13	16	208	1
Golfside Dr (1005)	11/18/2020	65	5	325	1
Parkland Dr (2961)	10/28/2020	35	5	175	1
Parkland Dr (2909)	10/28/2020	15	5	75	1
Parkland Dr (2915)	10/28/2020	15	5	75	1
Parkland Dr (2839)	10/28/2020	10	5	50	1
Parkland Dr (2819)	10/28/2020	10	5	50	1
Parkland Dr (2815)	10/28/2020	10	5	50	1
Parkland Dr (2805)	10/28/2020	10	5	50	1
Parkland Dr (2801)	10/28/2020	10	5	50	1
Parkland Dr (2721)	10/28/2020	15	5	75	1
W New England (470)	10/15/2020	60	5	300	1
S Kentucky Ave (1041)	10/5/2020	10	5	50	1
S Kentucky Ave (1000)	10/5/2020	5	5	25	1
S Kentucky Ave (1010)	10/5/2020	25	5	125	1
S Kentucky Ave (1101)	10/5/2020	55	5	275	1
S Kentucky Ave (Handicap Ramp)	10/5/2020	0	0	0	1
Gator Action Tire Store	10/5/2020	45	5	225	1
Jiffy Lube	10/5/2020	15	5	75	1

Location	Date	Length (FT)	Width (FT)	Area (SF)	Count
N Kentucky Ave (1051)	10/5/2020	5	5	25	1
N Kentucky Ave (1061)	10/5/2020	5	5	25	1

## Curb Ramps

Street	Cross Street	Location	Curb Ramp	Side walk	Marked PedCrossing	Ramp Type	Ramp Length	Ramp Width	Top Landing Width	Bottom Landing Width	Warnings	Warnings Color	Warnings Placement	Notes	Ramp Slope	Gutter Slope	Cross Slope	Flare Slope
W MORSE BLVD	N PARK AVE	Northwest	Yes	Yes	Yes	Perpendicular	93	62	23	120	No				6.9	1.9	2.7	17.1
PARK AVE	E SWOPE AVE	Southeast	Yes	Yes	Yes	Diagonal	65	60	26	120	No				5.1	6.3	0.3	12
LINCOLN AVE	N CENTER ST	Southwest	Yes	Yes	No	Parallel	58	78	72	62	No				10.5		3.9	
N PARK AVE	W CANTON AVE	Southeast	Yes	Yes	Yes	Parallel	94	54	85	120	No				7.9	6.3	0.4	18.5
W CANTON AVE		Northwest	Yes	Yes		Parallel			73		No				8.2	0.4	1.5	28.9
E NEW ENGLAND AVE	S KNOXWELLS AVE	Southeast	Yes	Yes	Yes	Parallel	103	81	78	111	No				4.4	5.4	0.4	31.3
E LYMAN AVE	S KNOXWELLS AVE	Northeast	Yes	Yes	Yes	Parallel	76	46	83	74	No				14.7	16	3.8	31.1
N NEW YORK AVE	CAROLINA AVE	Southwest	Yes	Yes	Yes	Parallel	144	103	60	100	No				4.4	11.6	1.7	28.2
COLE AVE	N PARK AVE	Northeast	Yes	Yes	Yes	Perpendicular	72	54	54	120	No				6.8	3	3	15.5
N PARK AVE	W CANTON AVE	Southwest	Yes	Yes	Yes	Parallel	95	62	105	120	No				9	9.3	1	18.4
S PARK AVE	E MORSE BLVD	Southeast	Yes	Yes	Yes	Parallel	93	68	79	120	No				4.4	6.4	0.3	9.2
PARK AVE	E COMSTOCK AVE	Southeast	Yes	Yes	Yes	Diagonal	73	68	61	120	No	Brick-Red	14		12.2	5.1	0.1	17.4
N NEW YORK AVE		East	Yes	Yes	Yes	Perpendicular	64	65	60	193	No				3.5		1	
W CANTON AVE	N VIRGINIA AVE	Southwest	Yes	Yes	Yes	Diagonal	48	54	59	114	No				3.9	14	2.2	17.9
E CANTON AVE	N KNOXWELLS AVE	Northeast	Yes	Yes	Yes	Diagonal	40	50	64	72	No				15.2	9	4.9	26.9
PARK AVE	COLE AVE	Southwest	Yes	Yes	Yes	Diagonal	82	66	93	120	No				8.2	5.2	1	16.5
PARK AVE	E COMSTOCK AVE	Northeast	Yes	Yes	Yes	Diagonal	72	71	48	120	No				9.6	2	0.8	17.9
W CANTON AVE	N VIRGINIA AVE	Northwest	Yes	Yes	Yes	Diagonal	52	82	47	108	No				4.1	2.3	1.7	22.4
W CANTON AVE	N PARK AVE	Southwest	Yes	Yes	Yes	Parallel	95	62	105	120	No				6.7	2.4	3.5	19.6
W CANTON AVE	N VIRGINIA AVE	Northeast	Yes	Yes	Yes	Diagonal	79	113	77	108	No				10.5	4.4	2.8	22



Street	Cross Street	Location	Curb Ramp	Side walk	Marked PedCrossing	Ramp Type	Ramp Length	Ramp Width	Top Landing Width	Bottom Landing Width	Warnings	Warnings Color	Warnings Placement	Notes	Ramp Slope	Gutter Slope	Cross Slope	Flare Slope
N NEW YORK AVE	GARFIELD AVE	Southwest	Yes	Yes	Yes	Parallel	135	67	61	101	No				6.6	14.8	3.7	24.3
LINCOLN AVE	N PARK AVE	Southeast	Yes	Yes	Yes	Parallel	64	64	136	118	No				8.2	2.6	2.7	17
N NEW YORK AVE	GARFIELD AVE	Northwest	Yes	Yes	Yes	Parallel	158	63	60	101	No				4.4	3	1.1	20.2
W CANTON AVE		Southwest	Yes	Yes		Parallel	90	71	73		No				11.1	0.5	0.5	15.2
PARK AVE	LYMAN AVE	Northwest	Yes	Yes	Yes	Diagonal	144	80	51	108	No				6.1	2	3.4	16.7
E NEW ENGLAND AVE	S KNOX WILES AVE	Southwest	Yes	Yes	Yes	Diagonal	94	72	50	104	No				7.3	4.4	3.2	8.1
LYMAN AVE	PARK AVE	Northeast	Yes	Yes	Yes	Perpendicular	71	63	90	120	No				8.1	1.7	1	19.1
W CANTON AVE		Northeast	Yes	Yes		Parallel					No				4.1	1.7	2.3	22.4
E CANTON AVE	N KNOX WILES AVE	Southeast	Yes	Yes	Yes	Perpendicular	68	36	54	72	No				12.7	7.4	3	32.2
PARK AVE	GARFIELD AVE	Southwest	Yes	Yes	No	Parallel	96	70	69	120	No				6.8	1.8	0.4	20.5
GARFIELD AVE	N PARK AVE	Southeast	Yes	Yes	Yes	Perpendicular	93	76	45	115	No				7.4	2.3	0.3	19.7
PARK AVE	LYMAN AVE	Southwest	Yes	Yes	Yes	Perpendicular	74	76	96	108	No				5.1	0.1	1.9	19.7
W CANTON AVE	N PARK AVE	Northwest	Yes	Yes	Yes	Parallel	94	60	70	120	No				7.8	3	0.1	22.6
N PARK AVE	W CANTON AVE	Northeast	Yes	Yes	Yes	Parallel	93	60	81	120	No				6.6	6.7	0.6	21.1
COLE AVE	N PARK AVE	Southeast	Yes	Yes	Yes	Perpendicular	75	60	54	120	No				9	4.8	1.4	17.9
LINCOLN AVE	N PARK AVE	Northwest	Yes	Yes	Yes	Parallel	96	67	71	118	No				1.7	4.4	1.1	13.2
N PARK AVE	W CANTON AVE	Northwest	Yes	Yes	Yes	Parallel	91	70	56	120	No				11.8	3.7	9.3	14.5
W CANTON AVE		South	Yes	Yes	No	Perpendicular	95	53	58		No				8.8	2.6	1.7	
N PARK AVE	E MORSE BLVD	Northeast	Yes	Yes	Yes	Parallel	93	77	57	120	No				3	1	0.4	12.3
GARFIELD AVE	PARK AVE	Southwest	Yes	Yes	Yes	Perpendicular	91	68	63	115	No				8.9	3.9	1.6	18.3
LINCOLN AVE	N CENTER ST	Southeast	Yes	Yes	No	Parallel	86	58	58	62	No				8.6		3.7	
W CANTON AVE	N VIRGINIA AVE	Southeast	Yes	Yes	Yes	Diagonal	53	75	49	108	No				16.4	1.5	3	15.8

Street	Cross Street	Location	Curb Ramp	Side walk	Marked PedCrossing	Ramp Type	Ramp Length	Ramp Width	Top Landing Width	Bottom Landing Width	Warnings	Warnings Color	Warnings Placement	Notes	Ramp Slope	Gutter Slope	Cross Slope	Flare Slope
N NEW YORK AVE	CAROLINA AVE	Northwest	Yes	Yes	Yes	Parallel	91	113	58	100	No				6.3	9.3	0.8	34.1
N PARK AVE	W MORSE BLVD	Northwest	Yes	Yes	Yes	Perpendicular	92	69	46	120	No				7.9	1.7	1	15.7
N NEW YORK AVE	W CANTON AVE	Southeast	Yes	Yes	Yes	Diagonal	61	138	60	74	No				8.1	9.9	0.5	21.7
W CANTON AVE		Northwest	Yes	Yes		Parallel	112	75	96		No				3.5	4.1	3.5	28.5
N PARK AVE	LINCOLN AVE	Northeast	Yes	Yes	Yes	Parallel	90	68	51	118	No				7.4	5.6	0.4	24
LINCOLN AVE	N CENTER ST	Northwest	Yes	Yes	No	Parallel	69	41	50	60	No				12.7	1.5	1.7	
W CANTON AVE	N PARK AVE	Southeast	Yes	Yes	Yes	Parallel	89	70	114	120	No				9.6	1.2	0.9	18.5
W CANTON AVE	N PARK AVE	Northeast	Yes	Yes	Yes	Parallel	91	69	36	120	No				6.2	3	1.3	20.7
LINCOLN AVE	N PARK AVE	Northeast	Yes	Yes	Yes	Parallel	89	62	125	120	No				9.3	4.4	2	18.7
E NEW ENGLAND AVE	S CENTER ST	Northwest	Yes	Yes	No	Other	98	78	93	60	No				8.6	0.7	4.4	9.4
LINCOLN AVE	N PARK AVE	Southwest	Yes	Yes	Yes	Parallel	93	68	47	118	No				3.1	10	0.1	12.9
N NEW YORK AVE		West	Yes	Yes	Yes	Perpendicular	60	57	60	193	No				3.6		0.6	
W CANTON AVE		Southeast	Yes	Yes		Parallel	93	52	58		No				2.7	2.3	0.5	
PARK AVE	W COMSTOCK AVE	Northwest	Yes	Yes	Yes	Diagonal	74	74	106	120	No				9.2	5.3	1.4	18.4
N NEW YORK AVE	W CANTON AVE	Northeast	Yes	Yes	Yes	Diagonal	70	75	60	74	No				8.8	13.6	2.1	17.3
PARK AVE	E SWOPE AVE	Southwest	Yes	Yes	Yes	Diagonal	91	63	46	120	No				6.2	5.2	0.1	17.8
N PARK AVE	GARFIELD AVE	Northwest	Yes	Yes	Yes	Parallel	86	73	141	120	No				5	21.5	2.8	15.5
E CANTON AVE	N KNOWLES AVE	Northwest	Yes	Yes	Yes	Diagonal	70	69	53	72	No				9.6	8.6	0.7	15.8
N NEW YORK AVE	W CANTON AVE	Southwest	Yes	Yes	Yes	Diagonal	69	52	61	60	No				7.3	11.4	3	18.2
LINCOLN AVE	N CENTER ST	Northeast	Yes	Yes	No	Parallel	99	57	50	60	No				7.4	3	2.5	5.5
LYMAN AVE	PARK AVE	Southwest	Yes	Yes	Yes	Perpendicular	73	63	145	120	No				6.9	4.1	1.3	16.3
PARK AVE	LYMAN AVE	Southeast	Yes	Yes	Yes	Diagonal	83	70	102	120	No				10.1	3.4	0.1	19.6

Street	Cross Street	Location	Curb Ramp	Side walk	Marked PedCrossing	Ramp Type	Ramp Length	Ramp Width	Top Landing Width	Bottom Landing Width	Warnings	Warnings Color	Warnings Placement	Notes	Ramp Slope	Gutter Slope	Cross Slope	Flare Slope
E MORS E BLVD	N PARK AVE	Northeast	Yes	Yes	Yes	Parallel	63	55	105	120	No				5.1	5.2	1.2	20.5
E MORS E BLVD	S PARK AVE	Southeast	Yes	Yes	Yes	Parallel	93	74	65	120	No				6.7	7.7	1.3	14.5
N NEW YORK AVE	CAROLINA AVE	Northeast	Yes	Yes	No	Parallel	108	49	60		No				8.1	8.1	0.4	9.8
PARK AVE	COLE AVE	Northwest	Yes	Yes	Yes	Diagonal	90	56	64	120	No				6.7	4.4	1.7	14.3
E NEW ENGLAND AVE	S CENTER ST	Northeast	Yes	Yes	No	Other	66	62	61	60	No				9.2	2.4	1.1	12.4
N PARK AVE	LINCOLN AVE	Southeast	Yes	Yes	Yes	Parallel	96	65	54	118	No				8.3	3	3.2	21.5
PARK AVE	LYMAN AVE	Northeast	Yes	Yes	Yes	Perpendicular	77	73	120	120	No				10	1.7	0.4	19
N NEW YORK AVE	W CANTON AVE	Northwest	Yes	Yes	Yes	Diagonal	80	110	61	60	No			Pole is in the way	4.9	11.2	4.4	11.2
PARK AVE	W COMSTOCK AVE	Southwest	Yes	Yes	Yes	Diagonal	72	70	139	120	No				6.7	3.1	1	13.8
N VIRGINIA AVE	CAROLINA AVE	Southeast	Yes	Yes		Parallel	65	52	54	98	No				4.1	8.3	1.3	22.6
N VIRGINIA AVE	CAROLINA AVE	Northeast	Yes	Yes	Yes	Parallel	49	66	47	98	No				7.2	11.5	1.7	22.5
W MORS E BLVD	N VIRGINIA AVE	Southwest	Yes	Yes	Yes	Diagonal	54	98	36	21	Yes	Brick-Red			1	2.8	1	14.3
W MORS E BLVD	N NEW YORK AVE	Northwest	Yes	Yes	Yes	Perpendicular	56	172	55	100	Yes	Other	15		3.3	10.9	1	11.5
W MORS E BLVD	N VIRGINIA AVE	Northeast	Yes	Yes	Yes	Diagonal	92	65	62	120	Yes	Brick-Red		4.3' button	9.2	5	1.6	24.2
E NEW ENGLAND AVE	S KNOWLES AVE	North	Yes	Yes	Yes	Parallel	65	49	54	72	Yes	Brick-Red	9		4.6	4.9	1.6	36.4
E MORS E BLVD	N CENTER ST	Northwest	Yes	Yes	No	Perpendicular	61	65	32	60	Yes	Brick-Red	8		2.8	5.7	1.7	
W MORS E BLVD	N CAPE N AVE	Southwest	Yes	Yes	Yes	Diagonal	56	84	51	72	Yes	Brick-Red			7.7	8.9	1.1	21.5
E MORS E BLVD	N CENTER ST	Northeast	Yes	Yes	No	Diagonal	82	77	127	60	Yes	Brick-Red	6		5.3	5	0.4	13.3
E MORS E BLVD	S CENTER ST	Southwest	Yes	Yes	No	Perpendicular	51	73	42	60	Yes	Brick-Red	9		0.8	2.6	3.2	
N NEW YORK AVE	W MORS E BLVD	Southwest	Yes	Yes	No	Parallel	79	47	97	98	Yes	Brick-Red	13		8.3	1.5	3.4	33.5
W MORS	N PENNSYLVANIA AVE	Southwest	Yes	Yes	Yes	Diagonal	64	63	75	120	Yes	Brick-Red		4.3' button	11.1	2.5	0.4	14.6

Street	Cross Street	Location	Curb Ramp	Side walk	Marked PedCrossing	Ramp Type	Ramp Length	Ramp Width	Top Landing Width	Bottom Landing Width	Warnings	Warnings Color	Warnings Placement	Notes	Ramp Slope	Gutter Slope	Cross Slope	Flare Slope
E BLVD	NIA AVE													from bottom				
W MORS E BLVD	N VIRGINIA AVE	Northwest	Yes	Yes	Yes	Diagonal	50	92	48		Yes	Brick-Red			1	2.6	1	8.5
W MORS E BLVD	N NEW YORK AVE	Southwest	Yes	Yes	Yes	Parallel	73	48	97	94	Yes	Brick-Red	11		9.6	1.1	0.6	33.5
E MORS E BLVD	N CENTER ST	Northwest	Yes	Yes	No	Perpendicular	72	61	95	60	Yes	Brick-Red	8		2.9	5.8	1.7	
W MORS E BLVD	N CAPE N AVE	Northeast	Yes	Yes	Yes	Diagonal	58	63	45	72	Yes	Brick-Red			5.9	6.1	1.7	17.4
W MORS E BLVD	N PENNSYLVANIA AVE	Southeast	Yes	Yes	Yes	Diagonal	64	63	89	120	Yes	Brick-Red		4.5' button from bottom	4.4	3	0.4	16.4
S KNOX WLES AVE	E NEW ENGLAND AVE	Northwest	Yes	Yes	Yes	Perpendicular	81	60	60	104	Yes	Brick-Red	9		14.1	3.4	2.1	23.7
N NEW YORK AVE	CAROLINA AVE	Southeast	Yes	Yes	No	Parallel	96	58	60		Yes	Brick-Red	10		4.4	8.2	1.3	15.4
W MORS E BLVD	N CAPE N AVE	Southeast	Yes	Yes	Yes	Diagonal	57	87	48	72	Yes	Brick-Red			5	10.5	2.5	15.9
W MORS E BLVD	N NEW YORK AVE	Northeast	Yes	Yes	Yes	Diagonal	52	83	53	100	Yes	Brick-Red	7		4.7	8.5	0.1	10.6
E MORS E BLVD	S CENTER ST	Southeast	Yes	Yes	No	Diagonal	70	74	121	60	Yes	Brick-Red			8.7	3.8	1.7	9.7
N NEW YORK AVE	W MORS E BLVD	Southeast	Yes	Yes	Yes	Diagonal	66	50	60	97	Yes	Brick-Red	11		8.8	2.1	2.2	29.5
E MORS E BLVD	S CENTER ST	Southwest	Yes	Yes	No	Perpendicular	66	72	50	60	Yes	Brick-Red	6		5.4	1.2	1.4	
W MORS E BLVD	N PENNSYLVANIA AVE	Northwest	Yes	Yes	Yes	Diagonal	66	63	59	120	Yes	Brick-Red		button 4.15' from bottom	13.5	5.2	1.1	13.8
E CANTON AVE	N KNOX WLES AVE	Southwest	Yes	Yes	Yes	Diagonal	74	100	53	72	Yes	Brick-Red	8		3.8	9.3	0.9	17.9
E NEW ENGLAND AVE	S KNOX WLES AVE	Northwest	Yes	Yes	Yes	Parallel	70	61	60	72	Yes	Brick-Red	30		14.3	2.5	2.4	21.8
N VIRGINIA AVE	GARFIELD AVE	Southeast	Yes	Yes	Yes	Parallel	85	52		96	Yes	Brick-Red			6.1	5.9	2.6	28.3
N VIRGINIA AVE	GARFIELD AVE	Northeast	Yes	Yes	Yes	Parallel	91	60			Yes	Brick-Red			14.2	8	1.4	29.7
W MORS E BLVD	N CAPE N AVE	Northwest	Yes	Yes	Yes	Diagonal	42	71		72	Yes	Brick-Red		Need top	8.2	2.4	0.3	20.6

## Pedestrian Crossing

STREET	CROSS STREET	Surface Material	MIDBLOCK	Marked Crosswalk	PADDLE	WALKSIGNAL	SIGN	FLASHER	Location	Curbside Ramp	Crosswalk Width	Buttons	Notes	Slope	Cross Slope
N PARK AVE	LINCOLN AVE	Other	No	Yes	No	No	No	No	South	Yes	118	No		3.3	0.2
S NEW YORK AVE	N NEW YORK AVE	Asphalt	No	Yes	No	No	No	No	South	Yes	94	No		4.8	0.3
LINCOLN AVE	N PARK AVE	Other	No	Yes	No	No	No	No	East	Yes	124	No		5.6	0.5
N PARK AVE	E MORSE BLVD	Other	No	Yes	No	Yes	No	No	North	Yes	120	No		4.4	0.5
N NEW YORK AVE	W CANTON AVE	Asphalt	No	Yes	No	No	No	No	North	Yes	75	No		4.4	1
W CANTON AVE	N NEW YORK AVE	Asphalt	No	Yes	No	No	No	No	East	Yes	74	No		3.4	1
S PARK AVE	E LYMAN AVE	Other	No	Yes	No	Yes	No	No	North	Yes	120	No		2.3	1
W MORSE BLVD	N NEW YORK AVE	Asphalt	No	Yes	No	No	No	No	East	Yes	97	No		3.7	1.1
CAROLINA AVE	N NEW YORK AVE	Asphalt	No	Yes	No	No	No	No	West	Yes	100	No		3.7	1.1
W CANTON AVE	E CANTON AVE	Other	No	Yes	No	Yes	No	No	West	Yes	120	No		3.3	1.1
W MORSE BLVD	N VIRGINIA AVE	Asphalt	No	Yes	No	No	No	No	West	Yes	98	No		5	1.2
GARFIELD AVE	N NEW YORK AVE	Asphalt	No	Yes	No	No	No	No	West	Yes	101	No		4.6	1.2
W LYMAN AVE	E LYMAN AVE	Other	No	Yes	No	Yes	No	No	West	Yes	108	No		3.1	1.3
N NEW YORK AVE	GARFIELD AVE	Other	Yes	Yes	Yes	No	Yes	Yes		Yes	193	No		1.7	1.4
N PARK AVE	LINCOLN AVE	Other	No	Yes	No	No	No	No	North	Yes	120	No		4.6	1.5
N PARK AVE	E SWOOP E AVE	Other	No	Yes	No	No	No	No	South	Yes	120	No		7.7	1.6
N PARK AVE	GARFIELD AVE	Other	No	Yes	No	No	No	No	South	Yes	115	No		3.9	1.7
CAROLINA AVE	N VIRGINIA AVE		No		No			No	East	Yes	98	No		2.2	1.7
E CANTON AVE	N KNOWLES AVE	Asphalt	No	Yes	No	No	No	No	North	Yes	72	No		2.3	1.7
N NEW YORK AVE	W CANTON AVE	Asphalt	No	Yes	No	No	No	No	South	Yes	76	No		2.3	1.7
GARFIELD AVE	N VIRGINIA AVE	Asphalt	No	Yes	No	No	No	No	East	Yes	96	No		3.3	1.7
E NEW ENGLAND AVE	S CENTER ST	Other	No	No	No	No	No	No	North	Yes		No		4.4	1.7
N PARK AVE	COLE AVE	Other	No	Yes	No	No	No	No	North	Yes	120	No		2.2	1.7
COLE AVE	N PARK AVE	Other	No	Yes	No	No	No	No	West	Yes	120	No		5.5	1.7
N PARK AVE	E CANTON AVE	Other	No	Yes	No	Yes	No	No	North	Yes	120	No		1.7	1.8
E COMSTOCK AVE	S PARK AVE	Other	No	Yes	No	No	No	No	East	Yes	120	No		1.2	1.9
GARFIELD AVE	N PARK AVE	Other	No	Yes	No	No	No	No	West	Yes	120	No		2.3	1.9
W CANTON AVE	N NEW YORK AVE	Asphalt	No	No	No	No	No	No	West	Yes	60	No		3	2

STREET	CROSS STREET	Surface Material	MIDBLOCK	Marked Crosswalk	PADDLE	WALKSIGNAL	SIGN	FLASHER	Location	CurbRamp	CrosswalkWidth	Button	Notes	Slope	CrossSlope
E CANTON AVE	N PARK AVE	Other	No	Yes	No	Yes	No	No	East	Yes	120	No		6.7	2.1
S PARK AVE	E MORSE BLVD	Other	No	Yes	No	Yes	No	No	South	Yes	120	No		6.1	2.1
E NEW ENGLAND AVE	S KNOWLES AVE	Other	No	Yes	No	No	Yes	No	West	Yes	104	No		7	2.1
W MORSE BLVD	N CAPEN AVE	Asphalt	No	Yes	No	No	No	No	West	Yes	72	No		6.7	2.1
N PARK AVE	COLE AVE	Other	No	Yes	No	No	No	No	South	Yes	120	No		6.1	2.2
W CANTON AVE	N VIRGINIA AVE	Other	No	Yes	No	No	No	No	East	Yes	108	No		5.5	2.2
E LYMAN AVE	S PARK AVE	Other	No	Yes	No	Yes	No	No	East	Yes	120	No		3.7	2.2
S KNOWLES AVE	E NEW ENGLAND AVE	Asphalt	No	Yes	No	No	No	No	North	Yes	72	No		1.4	2.3
S KNOWLES AVE	E NEW ENGLAND AVE	Other	No	Yes	No	No	No	No	South	Yes	111	No		1.4	2.4
E MORSE BLVD	N CENTER ST	Other	No	No	No	No	No	No	West	Yes		No		2.7	2.4
E CANTON AVE	N KNOWLES AVE	Asphalt	No	Yes	No	No	No	No	West	Yes	72	No		4.6	2.4
LINCOLN AVE	N CENTER ST	Asphalt	No	No	No	No	No	No	North	Yes	0	No		1.5	2.5
S PARK AVE	E LYMAN AVE	Other	No	Yes	No	Yes	No	No	South	Yes	120	No		5.2	2.6
W CANTON AVE	N VIRGINIA AVE	Other	No	Yes	No	No	No	No	West	Yes	108	No		4.8	2.6
N NEW YORK AVE	S NEW YORK AVE	Asphalt	No	Yes	No	No	No	No	North	Yes	100	No		5.6	2.6
S PARK AVE	E COMSTOCK AVE	Other	No	Yes	No	No	No	No	North	Yes	120	No		4.8	2.8
N KNOWLES AVE	E CANTON AVE	Asphalt	No	Yes	No	No	No	No	South	Yes	72	No		3.8	3
S PARK AVE	E COMSTOCK AVE	Other	No	Yes	No	No	No	No	South	Yes	120	No		2.1	3.1
N CAPEN AVE	S CAPEN AVE	Asphalt	No	Yes	No	No	No	No	North	Yes	72	No		5	3.3
E MORSE BLVD	N PARK AVE	Other	No	Yes	No	Yes	No	No	East	Yes	120	No		10.2	3.4
N PARK AVE	E CANTON AVE	Other	No	Yes	No	Yes	No	No	South	Yes	120	No		2.2	3.5
S KNOWLES AVE	E LYMAN AVE	Asphalt	No	Yes	No	No	No	No	North	Yes	74	No		2.3	3.9
S CAPEN AVE	N CAPEN AVE	Asphalt	No	Yes	No	No	No	No	South	Yes	72			4.7	4.1
E MORSE BLVD	S CENTER ST	Other	No	No	No	No	No	No	South	Yes		No		6.9	4.2
W MORSE BLVD	N PENNSYLVANIA AVE	Other	No	Yes	No	Yes	No	No	East	Yes	120	Yes		8.2	4.4
N VIRGINIA AVE	W CANTON AVE	Other	No	Yes	No	No	No	No	North	Yes	114	No		0.4	4.8
N VIRGINIA AVE	W CANTON AVE	Other	No	Yes	No	No	No	No	South	Yes	116			2.2	4.8

STREET	CROSS STREET	Surface Material	MIDBLOCK	Marked Crosswalk	PADDLE	WALKSIGN	SIGN	FLASHER	Location	Curb Ramp	Crosswalk Width	Button	Notes	Slope	Cross Slope
W COMSTOCK AVE	E COMSTOCK AVE	Other	No	Yes	No	No	No	No	West	Yes	120	No		4.8	5.3
CAROLINA AVE	N NEW YORK AVE	Asphalt	No	No	No	No	No	No	East	Yes		No		5.6	5.5
LINCOLN AVE	N CENTER ST	Concrete	No	No	No	No	No	No	South	Yes	62	No		3.9	5.8
N PENNSYLVANIA AVE	S PENNSYLVANIA AVE	Other	No	Yes	No	Yes	No	No	North	Yes	125	Yes		7.4	6
S PENNSYLVANIA AVE	N PENNSYLVANIA AVE	Other	No	Yes	No	Yes	No	No	South	Yes	120	Yes		5	7.3

## 6.3 Appendix C - ADA Coordinator Contact

### Program Responsibility – ADA Coordinator

The official responsible for implementation of the City of Winter Park's ADA Transition Plan for Public Rights of Way is the Transportation Manager:  
VACANT  
Transportation Manager,  
401 South Park Avenue  
Winter Park, FL 32789

As this official position is vacant, in the interim, the two officials responsible for this Plan are:

Donald Marcotte, P.E.  
City Engineer, Public Works Department  
401 South Park Avenue  
Winter Park, FL 32789  
(407) 599-3425

Hongmyung Lim, E.I.T.  
Engineer I, Planning & Transportation Department  
401 South Park Avenue  
Winter Park, FL 32789  
(407) 599-3521



## 6.4 Appendix D - Public Outreach

Summary of any Public Comments will be provided here when updated.

## 6.5 Appendix E - Grievance Procedure

### Public Notice

In accordance with the requirements of Title II of the Americans with Disabilities Act of 1990, the City of Winter Park will not discriminate against qualified individuals with disabilities on the basis of disability in City of Winter Park public rights of way services, programs, or activities.

**Employment:** The City of Winter Park does not discriminate on the basis of disability in its hiring or employment practices and complies with all regulations promulgated by the U.S. Equal Employment Opportunity Commission under title I of the Americans with Disabilities Act (ADA).

**Effective Communication:** The City of Winter Park will generally, upon request, provide appropriate aids and services leading to effective communication for qualified persons with disabilities so they can participate equally in the City's programs, services, and activities, including qualified sign language interpreters, documents in Braille, and other ways of making information and communications accessible to people who have speech, hearing, or vision impairments.

**Modifications to Policies and Procedures:** The City of Winter Park will make all reasonable modifications to policies and programs to ensure that people with disabilities have an equal opportunity to enjoy all City programs, services, and activities.

Anyone who requires an auxiliary aid or service for effective communication, or a modification of policies or procedures to participate in a City program, service, or activity, should contact the City of Winter Park's designated ADA Coordinator, as soon as possible but no later than 48 hours before the scheduled event.

The ADA does not require the City to take any action that would fundamentally alter the nature of its programs or services, or impose an undue financial or administrative burden.

The City will not place a surcharge on a particular individual with a disability or any group of individuals with disabilities to cover the cost of providing auxiliary aids/services or reasonable modifications of policy, such as retrieving items from locations that are open to the public but are not accessible to persons who use wheelchairs.

### The City of Winter Park, Florida

### Grievance Procedure under the Americans with Disabilities Act

This Grievance Procedure is established to meet the requirements of the Americans with Disabilities Act of 1990 ("ADA"). It may be used by anyone who wishes to file a complaint alleging discrimination on the basis of disability in the provision of services, activities, programs, or benefits by the City of Winter Park. The City of Winter Park's Personnel Policy governs employment-related complaints of disability discrimination.

The complaint should be in writing and contain information about the alleged discrimination such as name, address, phone number of complainant and location, date, and description of the problem. Alternative means of filing complaints, such as personal interviews or a tape recording of the complaint, will be made available for persons with disabilities upon request.

The complaint should be submitted by the grievant and/or their designee as soon as possible but no later than 60 calendar days after the alleged violation to:

**Donald Marcotte, P.E.**  
**City Engineer, Public Works Department**  
**Interim ADA Coordinator**  
**401 South Park Avenue**  
**Winter Park, Florida 32789**  
[ADACoordinator@cityofwinterpark.org](mailto:ADACoordinator@cityofwinterpark.org)

Within 15 calendar days after receipt of the complaint, the designated ADA Coordinator or their designee will meet with the complainant to discuss the complaint and the possible resolutions. Within 15 calendar days of the meeting, the designated ADA Coordinator or their designee will respond in writing, and where appropriate, in a format accessible to the complainant, such as large print, Braille, or audio tape. The response will explain the position of the City of Winter Park and offer options for substantive resolution of the complaint.

If the response by the designated ADA Coordinator or their designee does not satisfactorily resolve the issue, the complainant and/or their designee may appeal the decision within 15 calendar days after receipt of the response to the City Manager or their designee.

Within 15 calendar days after receipt of the appeal, the City Manager or their designee will meet with the complainant to discuss the complaint and possible resolutions. Within 15 calendar days after the meeting, the City Manager or their designee will respond in writing, and, where appropriate, in a format accessible to the complainant, with a final resolution of the complaint.

All written complaints received by designated ADA Coordinator or their designee, appeals to the City Manager or their designee, and responses from these two offices will be retained by the City of Winter Park for at least three years.