

Shady Park Community Input Meeting

September 24, 2021



Community Input and Survey Results

Nice Grass Spaces

Arts and Culture

**History and
Heritage**

Interactive Kids Features

**Flowers, Roses, better
landscape**

**Updated Benches
and Additional
Seating Areas**





Shady Park Update Park Site Overview

Key Highlights:

- Heritage and History Memorial
- Increased greenspace and event space
- Elevated landscape in key areas
- Replacement of sod and trees
- Hardscape and site amenity improvements
- ADA accessibility improvements
- Addition of interactive gaming spaces
- Rehabilitation and Highlighting of current historic markers

Increased Green/Event Space



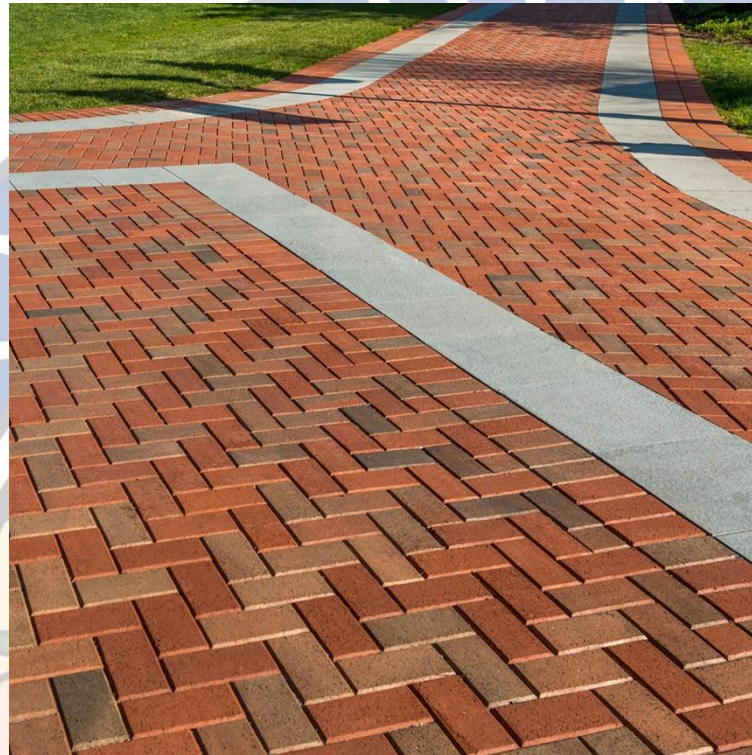
Elevated Landscape



Improved Hardscape and Gathering Space



- Increased size
- Added decorative pavers
- New benches, trash cans, and picnic tables



ADA Accessibility and Site Amenities



- Replacement and repositioning of benches, picnic tables, trash cans
- Addition of bollard lighting throughout park

Addition of Interactive Gaming Tables and Yard Games



Hannibal Square Shady Park



Discovering the Hidden Treasure by empowering and preserving arts, culture and history of West Winter Park

What's behind the name?

August 1990 Miss Stephanie Moore named Shady Park in honor of the tall trees.



Committee's Objective:

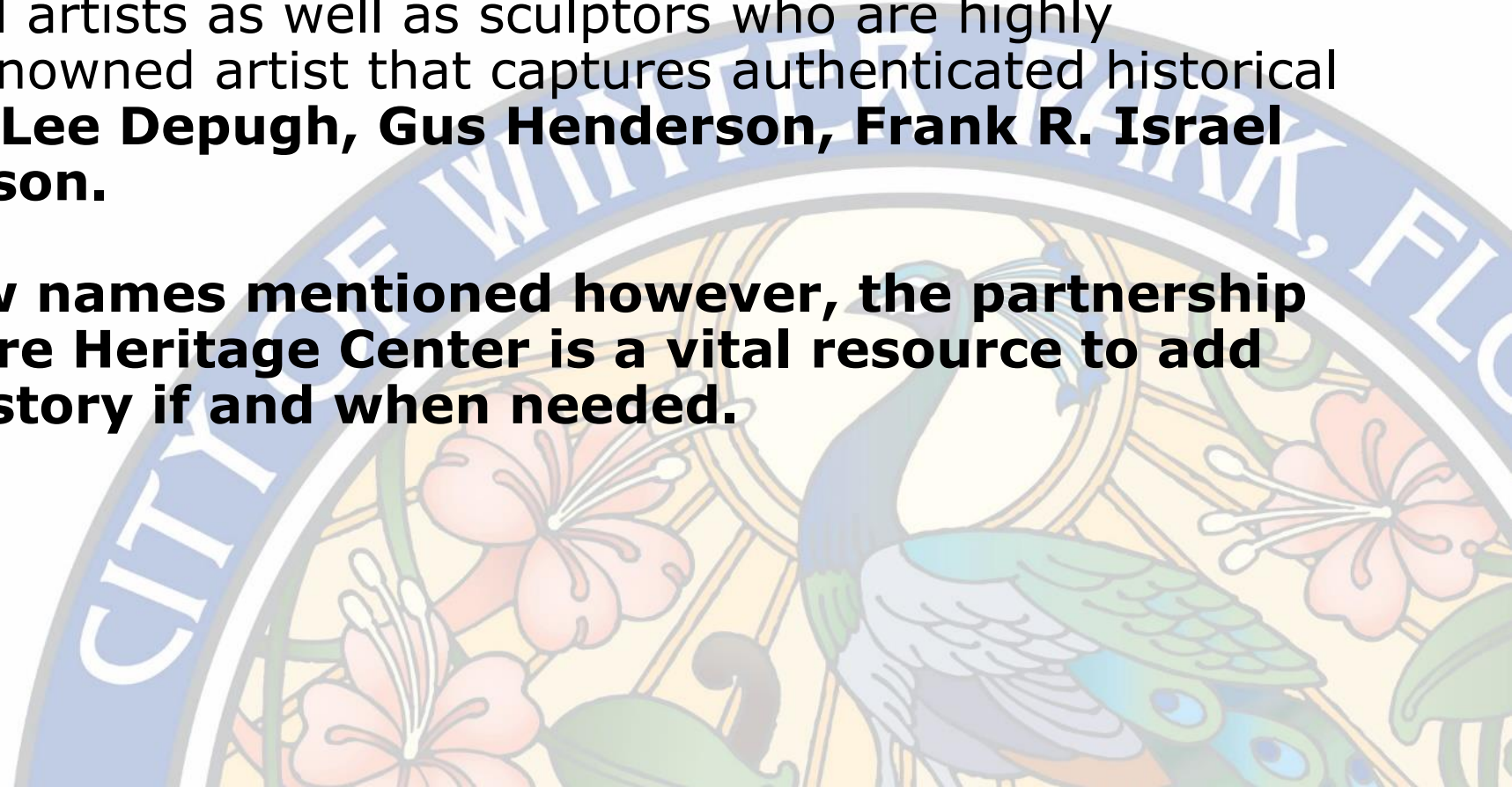
- Preserving African-American Historic places and people.
- To educate city leadership, residents and visitors of the impact and contributions of Hannibal Square west side residents & pillars of the community.
- To enhance the existing Historical Hannibal Square markers that have been strategically placed throughout the Hannibal Square community.
- To empower the community with historical visual arts and accurate history of west Winter Park.
- Restore current markers and art that is currently in Shady Park.
- Provide the public with accurate information of Hannibal Square past, present and future.



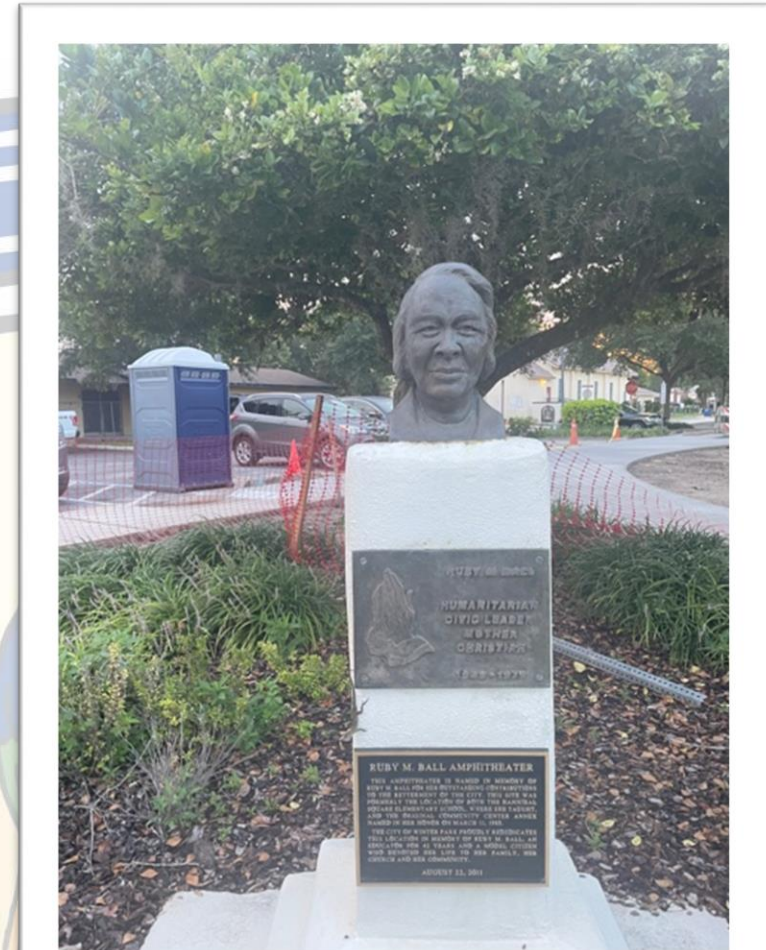
The Vision-What we would like to see....

The Shady Park committee with the help of The Heritage Center has identified several local artists as well as sculptors who are highly qualified and world renowned artist that captures authenticated historical figures such as **Mary Lee Depugh, Gus Henderson, Frank R. Israel and Walter B. Simpson.**

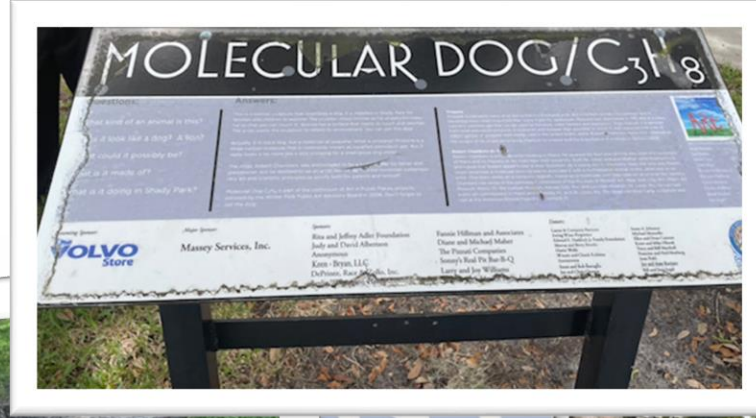
These are just a few names mentioned however, the partnership with Hannibal Square Heritage Center is a vital resource to add more names and history if and when needed.



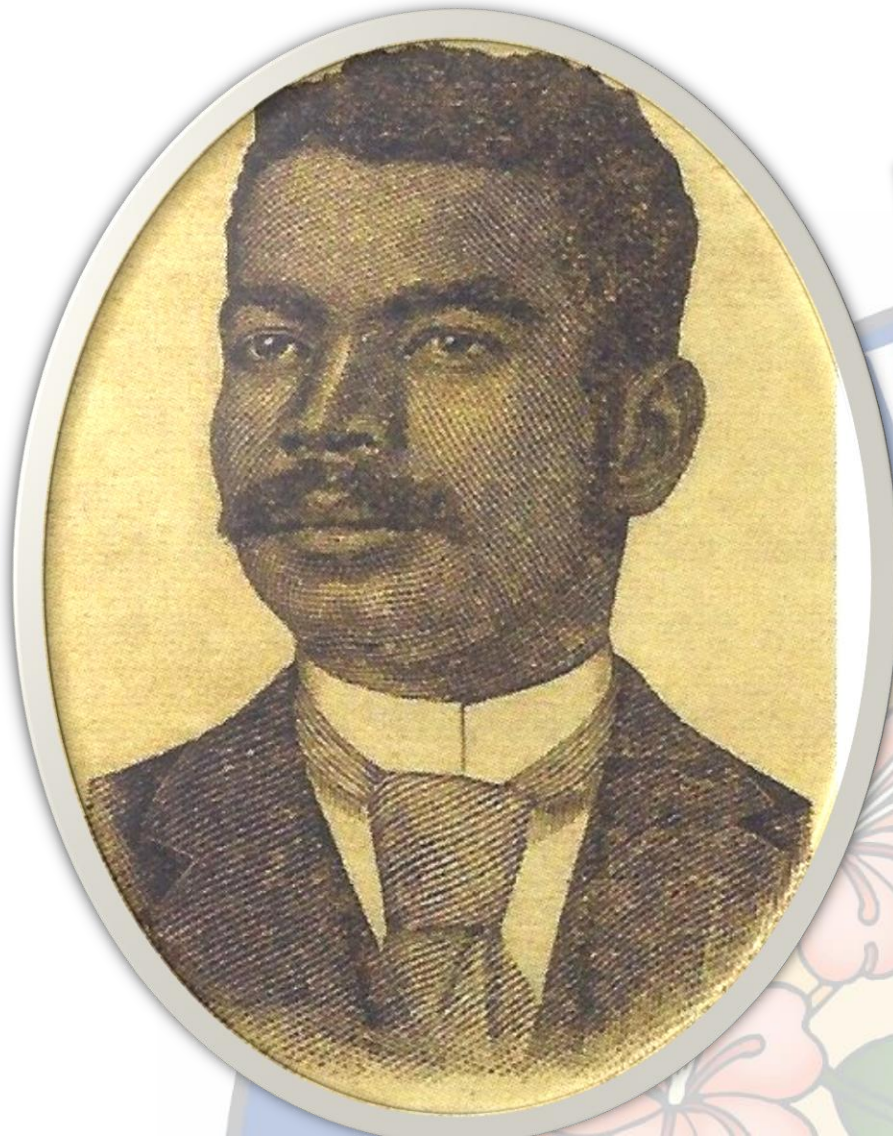
Existing Art/Sculptor



Existing Art/Sculptor



Historical Figures



Mary Lee Depugh



Depugh, a domestic worker, and her husband, Baker, moved to Winter Park from Evanston, Illinois, in 1937 to join her newly widowed former employer Maud Kraft (for whom Kraft Azalea Gardens would be named). The Depugh's settled in a home the Kraft family bought for them on Fairbanks Avenue. Mary Lee, an active clubwoman in Illinois, quickly recognized the need for a local organization of "ambitious community women" of color.

she established the Ideal Woman's Club and was elected its first president. The club became a vehicle through which African-American women could socialize and initiate west side civic improvement projects. An offshoot, the Benevolent Club held fundraisers to assist the elderly at a time when medical facilities were segregated, and professional healthcare was unavailable or unaffordable for many African-Americans.

Depugh began what is now known as The Garden as a neighborhood mission. It officially became a nursing home in 1956, as Florida's first state-approved facility serving the African-American community.

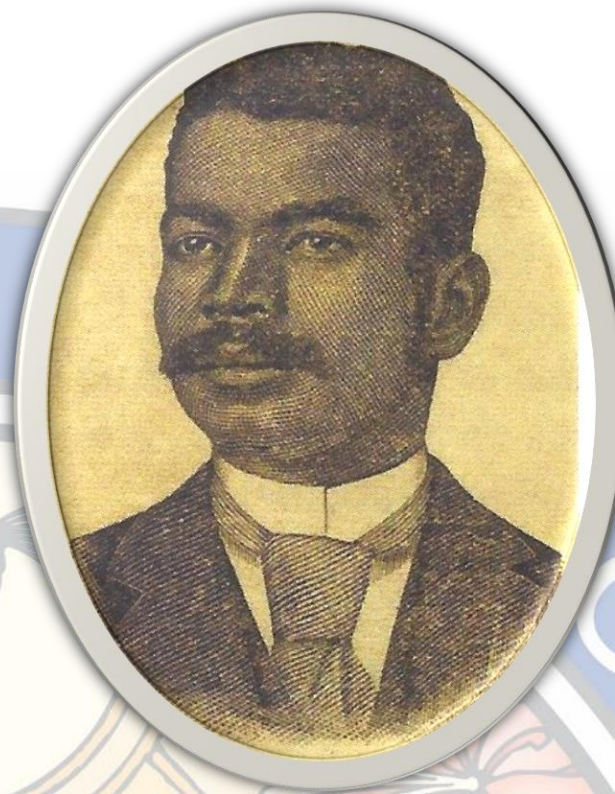
Mary Daniels

Gus Henderson

GUS HENDERSON - Gustavus C. Henderson (1862-1917)

supported the efforts of Winter Park founders, Loring Chase and Oliver Chapman. Henderson led 64 registered black voters to the meeting to cast their ballots. In addition to the 47 white voters, they passed the legislation incorporating Winter Park and ensuring that Hannibal Square was included.

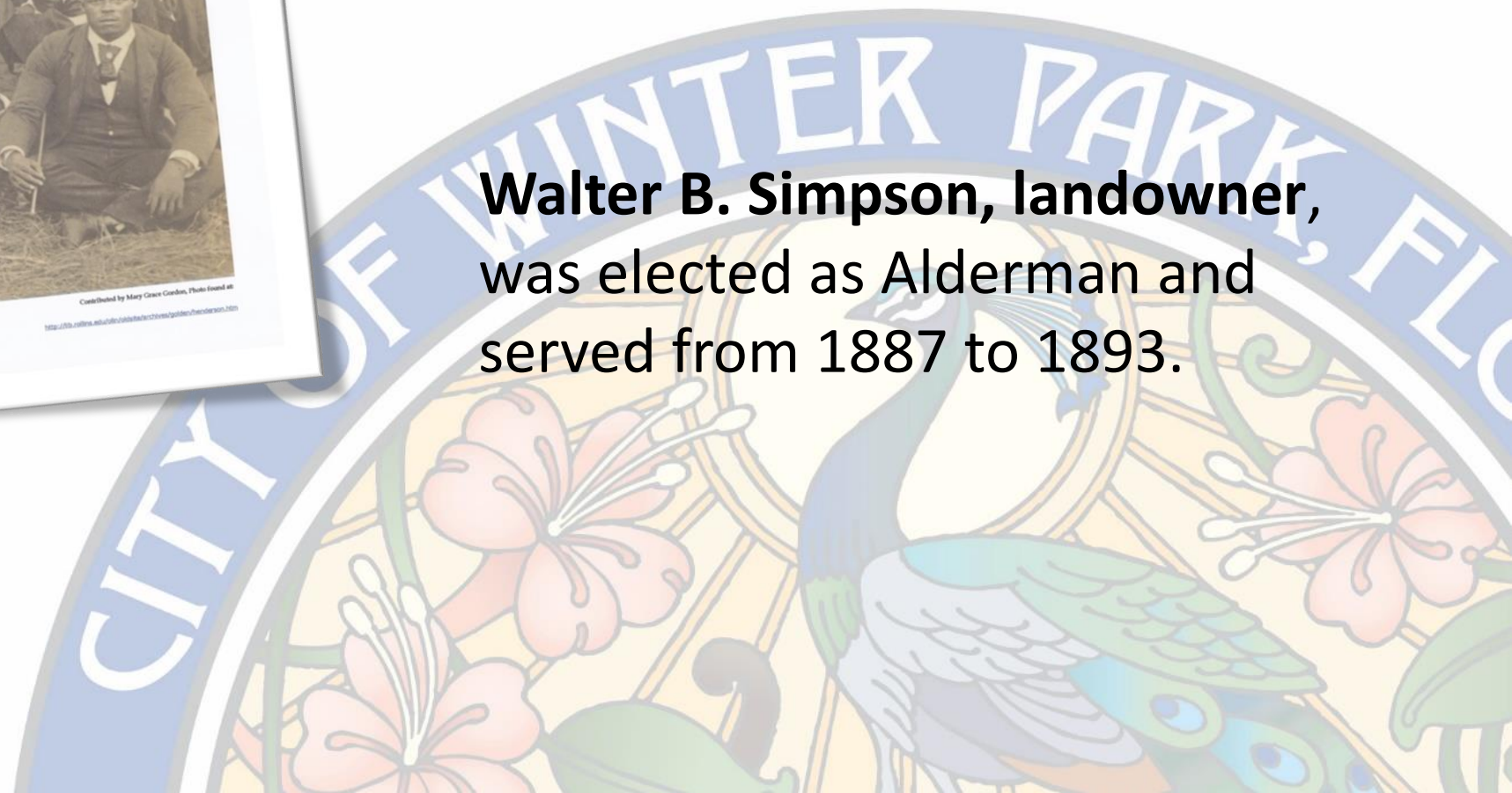
created a new path as an entrepreneur, printer, publisher and editor what is now know as Hannibal Square. A vigorous community activist and writer, he was crucial in advocating for education and voting rights among African-Americans.



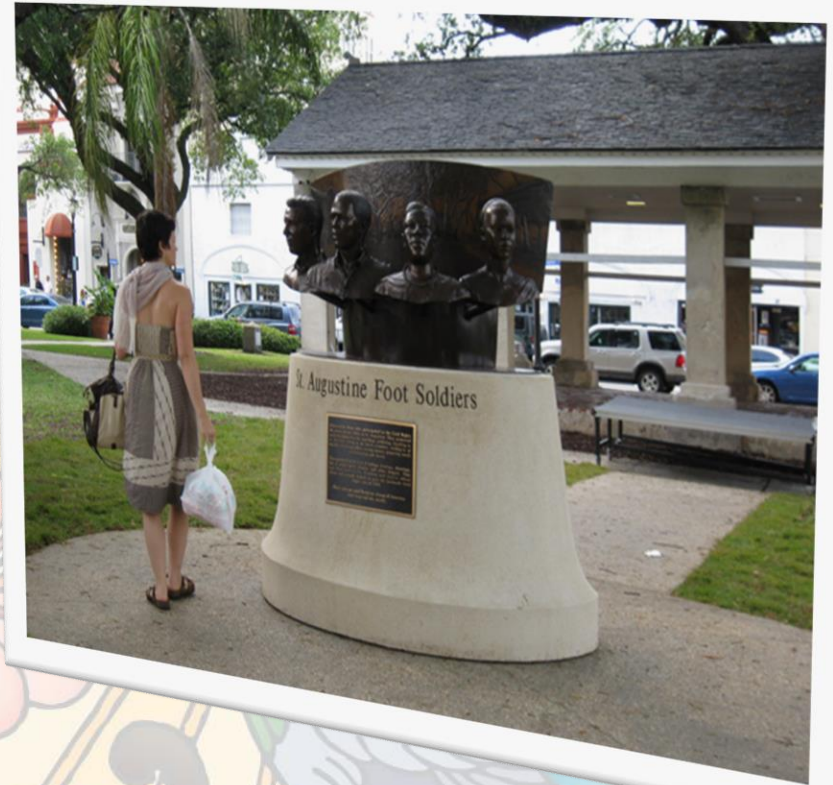
Frank R. Israel, landowner, was elected as Alderman and served from 1887 to 1893.



Walter B. Simpson, landowner,
was elected as Alderman and
served from 1887 to 1893.



Foot Soldier Statue-by Brian Owens



Shady Park

Concept Design:

- Heritage and History Memorial
- Increased greenspace and event space
- Elevated landscape in key areas
- Replacement of sod and trees
- Hardscape and site amenity improvements
- ADA accessibility improvements
- Addition of interactive gaming spaces
- Rehabilitation and Highlighting of current historic markers



*Slide updated since presentation

Conclusion

- Local artists have been very instrumental in guiding our efforts as we work with the City of Winter Park to preserve the rich history of Hannibal Square through outdoor art and monuments.
- We aim to uncover some of the Hidden Treasures of our beautiful City by empowering and preserving arts, culture and history of West Winter Park.
- We also recommend that this historical park have pertinent information on the historical markers placed in a brochure to be accessed at the community center and online.

