

# LAKE SUE

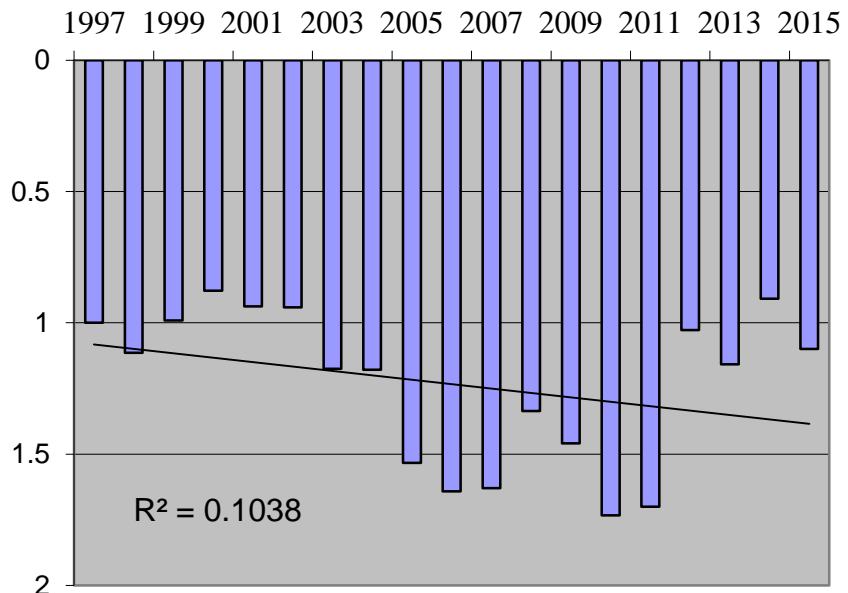
**Surface Area:**  
142 acres

**Drainage Basin:**  
450 acres

**Average Depth:**  
9 feet (approx.)

**OHW Elevation:**  
71.5 feet NGVD

**Lake Sue water clarity 1997 through 2015 (in meters)**



**General Information:** Lake Sue is the uppermost lake in the Winter Park chain of lakes. Approximately 30 percent of the surface area of Lake Sue lies within Winter Park. The remainder of the lake is split between Orange County and the City of Orlando. Lake Sue is part of the Howell Branch Creek system, and receives water from Lake Rowena, the most immediate upstream lake. Water leaves Lake Sue via the creek, and flows through Mead Garden, and into Lake Virginia. Lake Sue is a water table lake, and its level is dependent on rainfall, surface flow and groundwater levels. Lake Sue does not have deepwater access to other lakes. Lake Rowena upstream is accessible by small boats, and Lake Virginia only by canoe or kayak (portages may be required during low water periods).

**Water Quality:** Water quality in Lake Sue is heavily affected by flow from upstream lakes and stormwater runoff from within its own 450 acre drainage basin. Trend analysis of monthly Secchi disk data from 1997 through 2015 indicates no statistical change in water clarity.

**Management Efforts:** A coordinated plant management program has been established between the City of Winter Park, The City of Orlando and Orange County. Under this program the City of Winter park performs plant management activities on the entire lake, and bills Orlando and Orange County for work performed in their areas of the lake. Major plant control efforts focus on controlling exotic plants such as hydrilla and water hyacinth. Occasional control of native plants like pondweed is required to maintain boating access. A CDS stormwater treatment system was recently constructed at Fawsett and Forrest. Additional stormwater management within the Winter Park portion of the drainage basin consists of leaf and sediment traps at all of the outfalls from Winter Park, and street sweeping to prevent materials from entering the stormwater system. The City of Orlando is in the process of installing several stormwater treatment systems in this basin, upstream of Lake Sue. These projects should eventually help to improve water quality in Lake Sue.