

LAKE OSCEOLA

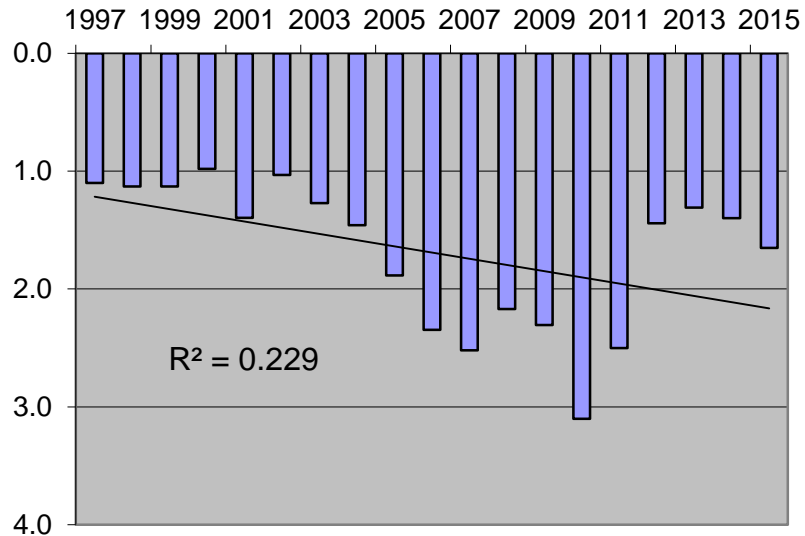
Lake Osceola water clarity 1997 through 2015 (in meters)

Surface Area:
156 acres

Drainage Basin:
567 acres

Average Depth:
14 feet (approx.)

OHW Elevation:
66.5 feet NGVD



General Information: Part of the Howell Branch Creek system, Lake Osceola is the middle lake in the Winter Park chain of lakes. The lake receives water from stormwater runoff, groundwater seepage and flow Lake Virginia via the Fern Canal. Water leaves Lake Osceola through the Venetian Canal, which flows to Lake Maitland. The canals to Lakes Virginia and Maitland are both navigable, and provide access to a total of five lakes in Winter Park and Maitland. A prominent City landmark, and eco-tourism business, the Scenic Boat Tour, is based on Lake Osceola, at the east end of Morse Boulevard.

Water Quality: Water quality in Lake Osceola is influenced primarily by stormwater runoff and flow received from Lake Virginia. Statistical analysis of annual average Secchi disk transparency values from 1997 through 2015 shows no trend in water clarity.

Management Efforts: Stormwater retrofits currently in place on Lake Osceola include two alum stations, one at Morse Boulevard that treats three outfalls, and the other at Webster Avenue that includes a large in-line baffle box for debris removal. There is also a CDS unit at Elizabeth Drive, and a large exfiltration system at Trismen Terrace and Lakewood Drive and a baffle box on Palmer Avenue. Baffle boxes have also been constructed for the outfalls at Alexander Place, Morse Boulevard and Canton Avenue to remove leaves and debris from alum treated stormwater.

The Webster alum station has recently been rebuilt to improve efficiency and the Morse station is scheduled for upgrades this year.