

LAKE CHELTON

Lake Chelton water clarity 1997 through 2015 (in meters)

Size:

4.6 acres

Drainage Basin:

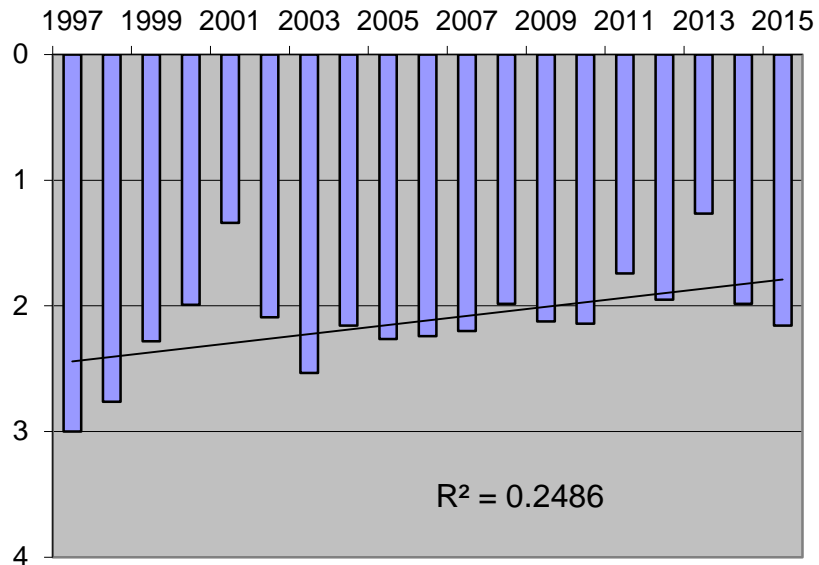
10 acres

Average Depth:

12 feet (approx.)

OHW Elevation:

80 feet NGVD



General Information: Lake Chelton is a sinkhole lake. The water level in the lake is dependent on groundwater levels, which are ultimately dependent on rainfall. Four stormwater outfalls convey runoff to Lake Chelton. There are no permanent surface inflows to, or outfalls from, the lake. The land between the lake and Lake Chelton Circle is a city park, and offers passive recreational opportunities for residents of the surrounding neighborhood.

Water Quality: Water quality in Lake Chelton is primarily affected by stormwater runoff. While water quality has remained good, there has been a measured decline in clarity over the period of record. Annual average Secchi disk transparency data from 1997 through 2015 show a weak statistical trend toward lower clarity.

Management Efforts: The four outfalls to the lake have been retrofitted with underground baffle boxes, which catch the leaves at the top of the bank, before they can be transported to the lake. It is hoped the new systems will help improve water clarity in the lake over the next few years. Other management efforts conducted on the lake focus on the maintenance of shoreline vegetation, including the spraying and removal of exotic species, and the planting of native plants.