

LAKE BERRY

Lake Berry water clarity 1997 through 2015 (in meters)

Size:

68 acres

Drainage Basin:

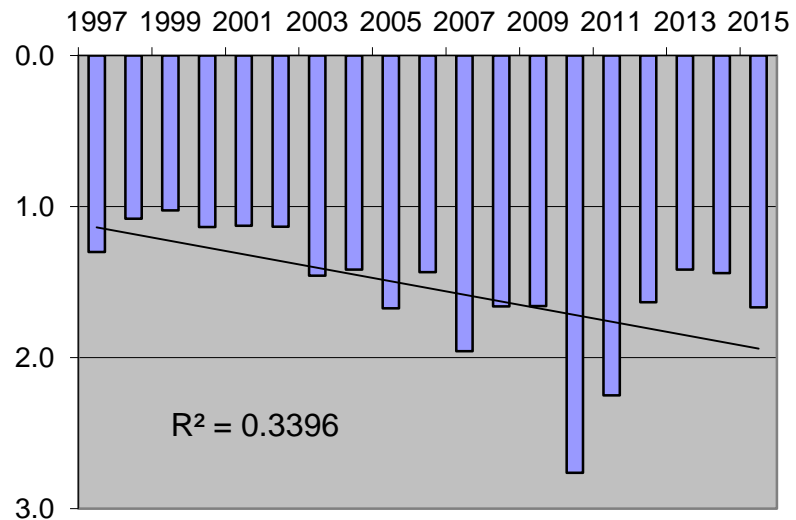
441 acres

Average Depth:

10 feet (approx.)

OHW Elevation:

70.2 feet NGVD



General Information: Lake Berry has no permanent inflows and the water level is dependent on the elevation of ground water in the area. Water enters through ground water seepage and rainfall runoff. When the water elevation is high, water flows out through a ditched wetland system, into Lake Virginia. The normal elevation of Lake Virginia is 66.5, nearly four feet below Lake Berry. A portion of the basin, along the western shore of the lake, remains undeveloped. Approximately 30 percent of Lake Berry's drainage basin either meets current stormwater treatment requirements, or is undeveloped.

Water Quality: Water quality in Lake Berry is primarily affected by stormwater runoff. Annual average Secchi disk transparency data from 1997 through 2015 show a slight statistical trend toward improving water clarity.

Management Efforts: A large exfiltration system under Banchory Road (between Lakemont and Langholm) was constructed in 2008 and two baffle box systems for Balmoral Road drainage were been constructed in 2013. Other activities on the lake include exotic plant control. Water hyacinth and hydrilla are two noxious, non-native plants that occur in Lake Berry. Left untreated, these plants can render entire lakes impassable to boats. The lake is surveyed quarterly, and plants are sprayed as needed. The lakes division also responds to resident reports of nuisance plants in the lake.