

W. P. RACQUET CLUB POND

WPRC Pond water clarity 1998 through 2015 (in meters)

Size:

1.4 acres

Drainage Basin:

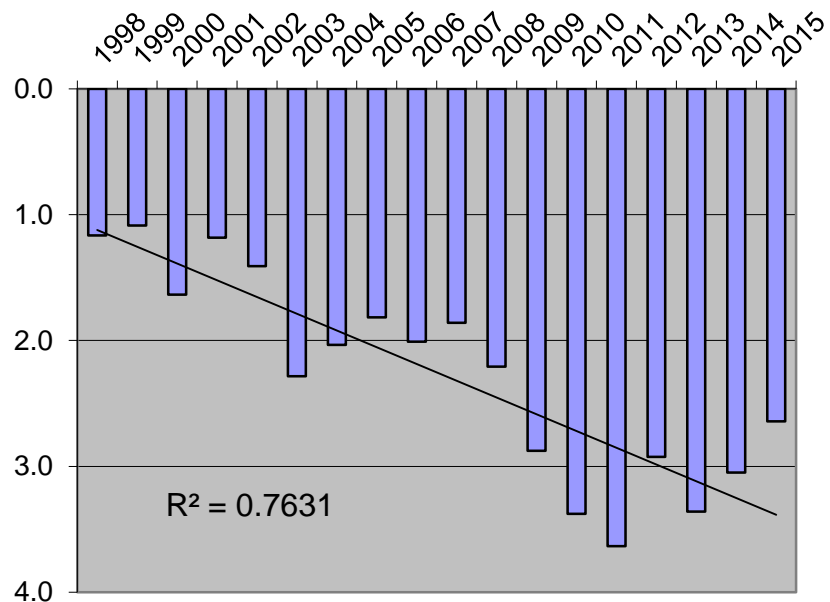
4.3 acres

Average Depth:

6 feet (approx.)

OHW Elevation:

not determined



General Information: The unnamed pond north of the entrance to the Winter Park Racquet Club has two stormwater outfalls discharging to it. One drains water from the racquet club's retention pond, and the other from the neighborhoods to the east of Via Tuscany. Water is automatically pumped from the pond during high water condition to Howell Branch Creek by a permanent underground pump station.

Water Quality: The largest factor affecting water quality in this pond is stormwater runoff. Annual average Secchi disk transparency data from 1998 through 2015 show a strong statistical trend toward improving water clarity.

Management Efforts: The city maintains leaf traps on the two stormwater outfalls to the pond. An aeration system has been installed to reduce the frequency of filamentous algae blooms. Street improvements included curbing to help channel water to the trap structures rather than flowing over the banks of the pond. This was done to reduce bank erosion and turbidity and sedimentation within the pond. Lakes division crews also maintain native plant stands on the eastern shore along Via Tuscany.