

RESOLUTION NO. 2062-10

A RESOLUTION OF THE CITY COMMISSION OF THE CITY OF WINTER PARK, FLORIDA SUPPORTING A WAYFINDING SIGN SYSTEM PLAN TO EFFICIENTLY AND SAFELY GUIDE MOTORISTS AND PEDESTRIANS TO KEY PUBLIC FACILITIES INCLUDING CIVIC, CULTURAL, VISITOR AND RECREATIONAL DESTINATIONS WITHIN THE CITY OF WINTER PARK; APPROVING CRITERIA FOR DESTINATIONS SHOWN ON SUCH WAYFINDING SIGN SYSTEM PLAN; PROVIDING AN EFFECTIVE DATE.

WHEREAS, the City Commission of the City of Winter Park, Florida supports a Wayfinding Sign System Plan to efficiently and safely guide motorists and pedestrians to key civic, cultural, visitor and recreational destinations within the City of Winter Park; and

WHEREAS, the City Commission also supports a preliminary location area map for such wayfinding signs along Lee Rd./S.R. 423, Orlando Ave./S.R. 600/U.S. 17-92, and Fairbanks Ave./S.R. 426, in which specific site plans showing specific location requirements will be further developed after approval by the Florida Department of Transportation ("FDOT"); and

WHEREAS, the City Commission also supports the design and engineering of the wayfinding signs to meet all applicable design and engineering standards of FDOT;

WHEREAS, pursuant to F.A.C. 14-51.051(3), the City Commission approves the wayfinding sign evaluation criteria to evaluate and process destination sign requests under the Wayfinding Sign System Plan; and

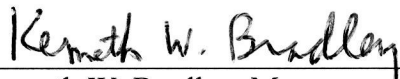
WHEREAS, the City Commission previously approved Resolution 2020-09 adopting a preliminary Wayfinding Sign System Plan that has been revised based on discussions with Florida Department of Transportation;

NOW, THEREFORE, BE IT RESOLVED BY THE CITY COMMISSION OF THE CITY OF WINTER PARK, FLORIDA, THAT:

Section 1. The City Commission hereby supports the revised Wayfinding Sign System Plan attached hereto as Appendix "A" and incorporated herein by reference (the "Plan"), which Plan includes the signage design and the preliminary sign location map along Lee Rd./S.R. 423, Orlando Ave./S.R. 600/U.S. 17-92, and Fairbanks Ave./S.R. 426, and hereby approves the wayfinding evaluation criteria to evaluate and process destination sign requests under such Plan.

Section 2. This Resolution shall take effect immediately upon its passage and adoption.

ADOPTED at a regular meeting of the City Commission of the City of Winter Park, Florida held in City Hall, Winter Park, Florida this 12th day of July, 2010.


Kenneth W. Bradley, Mayor

Attest: 
Cynthia S. Bonham, City Clerk

Appendix A

Wayfinding Sign Plan

AUGUST 2010





Wayfinding Signage System Plan

WAYFINDING SIGN EVALUATION AND CRITERIA

A. What is a wayfinding sign?

A wayfinding sign is a directional sign that efficiently and safely guides the motorists and pedestrians to key public facilities including civic, cultural, visitor, commercial and recreational destinations within the City of Winter Park.

B. What is the wayfinding sign evaluation process?

1. Written requests for the installation of wayfinding signs shall include a site plan showing the destination and sign location(s). Existing signs and traffic control devices shall be identified on the site plan and any separation distance(s).
2. Submit the written request and site plan to:
City of Winter Park
Community Redevelopment Department
401 Park Avenue South
Winter Park, FL 32789
407-599-3567 PHONE
407-599-3499 FAX
3. The written request shall be evaluated according to the following criteria:
 - a. The addition of the sign for the subject destination or service provides a benefit to the motoring public.
 - b. The supplemental sign shall meet the Wayfinding Destination Criteria list (see Section C).
 - c. The existing wayfinding signage contains space for additional signs or legend at the desired location.
 - d. Wayfinding signage shall not interfere with the visibility of traffic control devices, existing signs or violate minimum spacing distances.

C. What are the destinations that qualify for wayfinding signage?

1. To qualify for wayfinding signage, the destination must be one of the following destinations:
 - a. Government Offices/Services/Properties
 - City Facilities/Properties
 - Post Offices
 - Public Libraries
 - City Parking Lots/Garages
 - Train Station/Rail stops
 - b. Recreational, Cultural & Commercial Attractions
 - Downtown Winter Park
 - Public Golf Courses
 - Non-profit Museums with annual attendance above 10,000 persons
 - Recreational/Cultural attractions open year-round, with annual attendance above 10,000 persons
 - Major shopping centers/areas with a distinct defined area, established name and at least 500,000 square feet of leasable space
 - Historic Districts officially declared by City resolution and appearing in the National Register of Historic Places.
 - c. Educational & Medical Facilities
 - Accredited non-profit Colleges and Universities with a physical main campus in Winter Park and enrollment over 1,000 persons
 - Technical/Vocational Schools with a physical main campus in Winter Park and enrollment over 1,000 persons
 - Medical Facilities with a minimum of 250 beds and 24/7 open emergency room
 - d. Lodging
 - Hotels/Motels with a minimum of 100 beds

Wayfinding Sign Plan

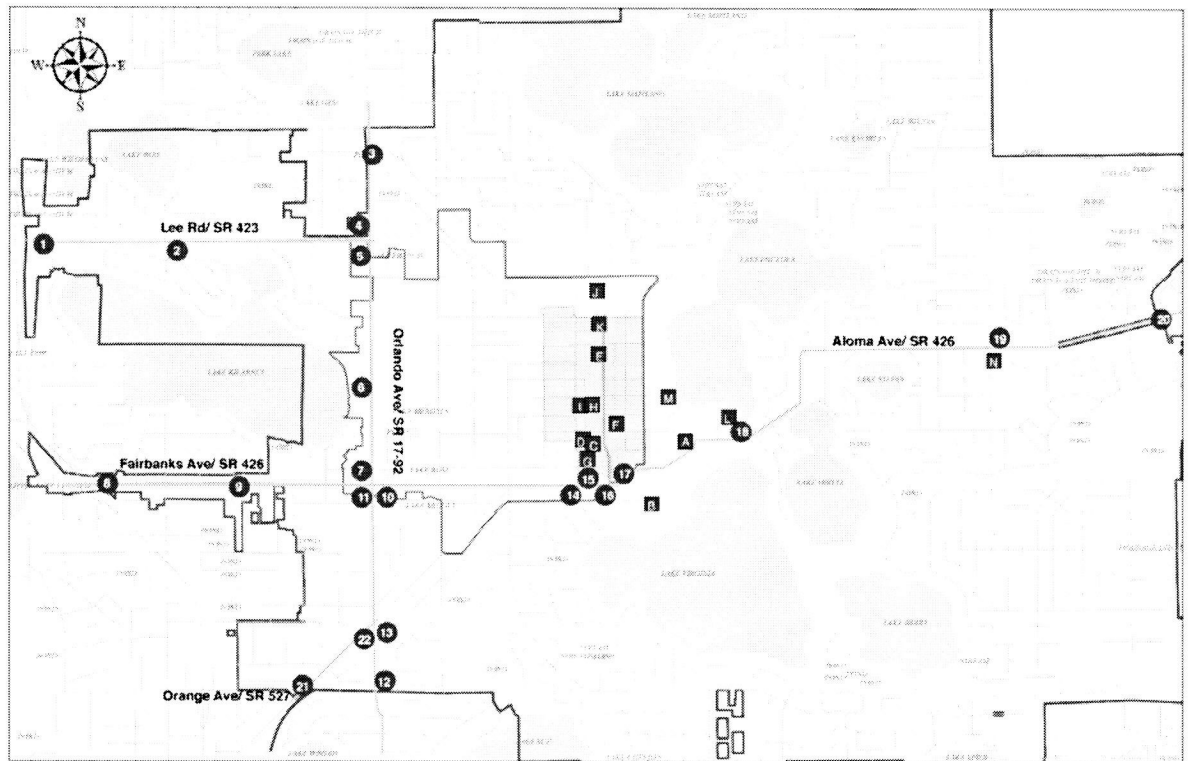
DRAFT 2



AUG
2010

City of Winter Park

Wayfinding Signage System Plan



Legend

Destinations

- A. Public Library
- B. Rollins College
- C. Welcome Center
- D. Farmers' Market/Historical Museum
- E. Parking (Park Place)
- F. Parking (Bank of America)
- G. Parking (City Hall)
- H. Train Station
- I. Parking (Lot A)
- J. Golf Course
- K. Morse Museum
- L. Polasek Museum
- M. Scenic Boat Tour
- N. Hospital

City Limits

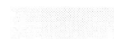
Downtown

Park Avenue

State Roads

Sign Locations

A



1

Wayfinding Sign Plan

Wayfinding sign ratio & specs



DRAFT 2



AUG
2010

City of Winter Park

1. All sign panels and graphics will have 3M High Intensity Grade Prismatic Reflective Sheeting applied that meets ASTM D4956 requirements. Sign color will be BLUE 294.
2. Rear of sign to be matte finish painted equivalent to PMS 294 blue.
3. Sign sizes are as follows:
 - a. Welcome ~ large, 2-post 53"x72"
 - b. Welcome ~ small, 1-post 48"x57"
 - c. Directional ~ two sizes, 4@60"x60" and 12@60"x72"
4. Signs will be placed at 7ft. height on posts, except large Welcome 2-post sign, to FDOT specifications.
5. Round aluminum "break away" posts with cover. Diameter will meet FDOT specifications, including 90 MPH wind loading requirements.
6. Steel reinforced concrete footing engineered to FDOT specifications.

NOTE: Specific materials and structural engineering will be detailed in the construction drawings that will be submitted for permit.



Directional sign specs



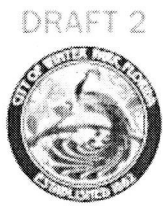
1. Five (5) directional signs are 60"x60".
2. Decorative items:
 - a. City seal is 22.5" round and overlaps 7.5" onto main sign
 - b. Filigree pieces attach to city seal and top of main sign
3. Font is Highway Gothic E.



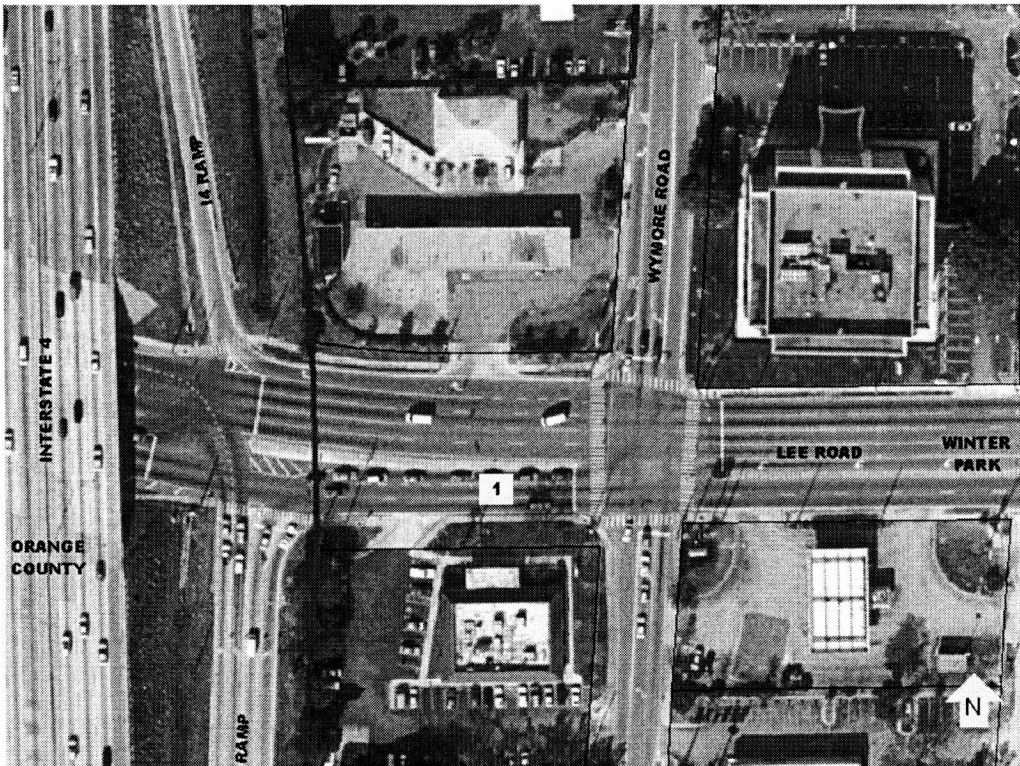
Directional sign specs



1. Remainder of directional signs (12) are 60"x72".
2. Decorative items:
 - a. City seal is 22.5" round and overlaps 7.5" onto main sign
 - b. Filigree pieces attach to city seal and top of main sign
3. Font is Highway Gothic E.



AUG
2010



Wayfinding Sign Plan

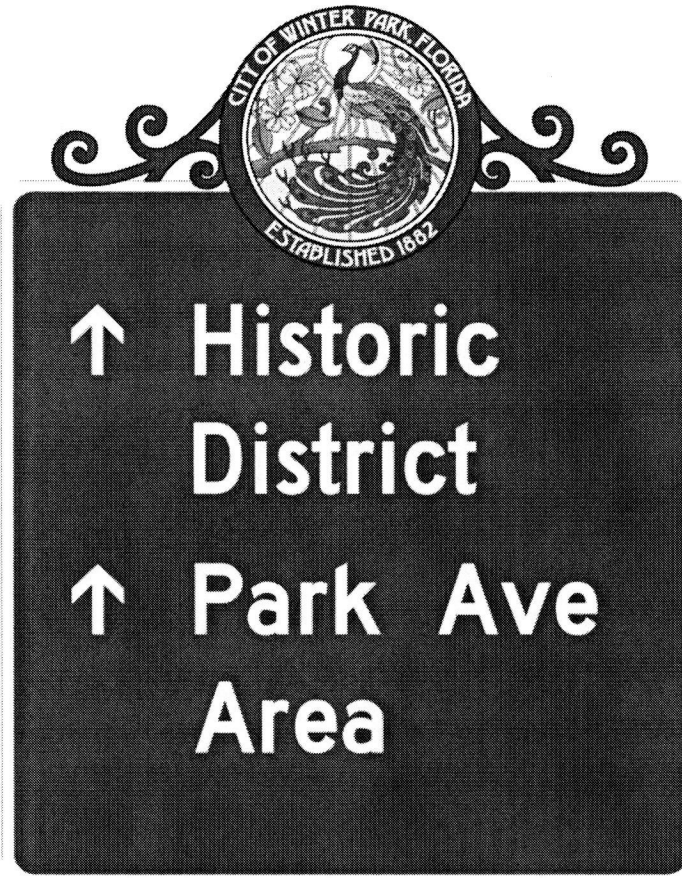
DRAFT 2



AUG
2010

City of Winter Park

Lee Road
(midpoint)



Wayfinding Sign Plan

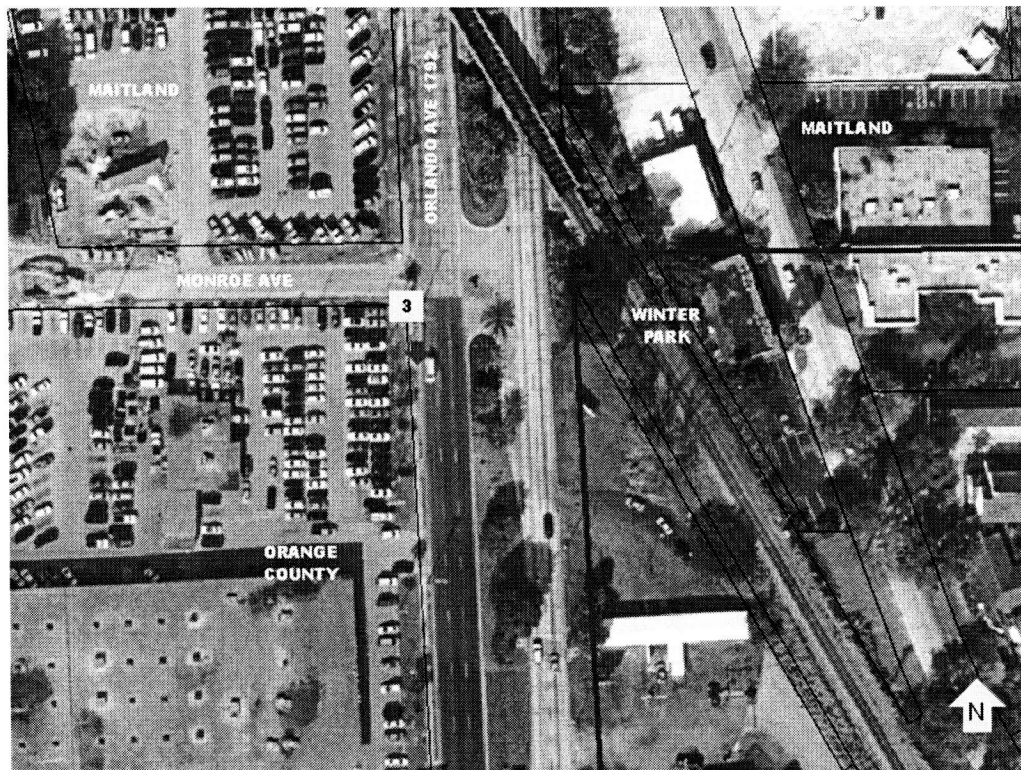
DRAFT 2



AUG
2010

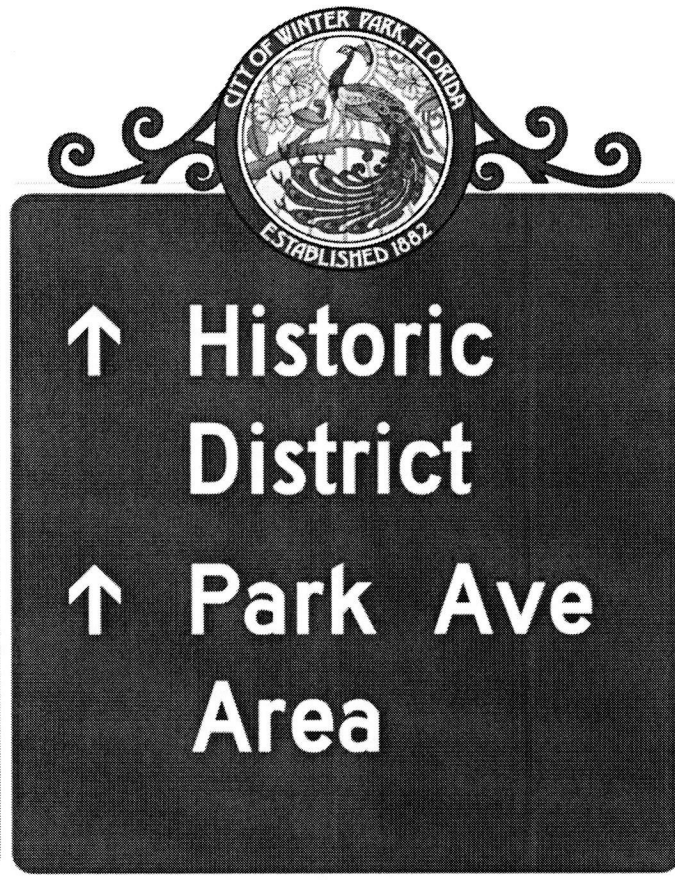
City of Winter Park

Highway 17-92 & Elvin Avenue



Wayfinding Sign Plan

Highway 17-92 & Lee Road

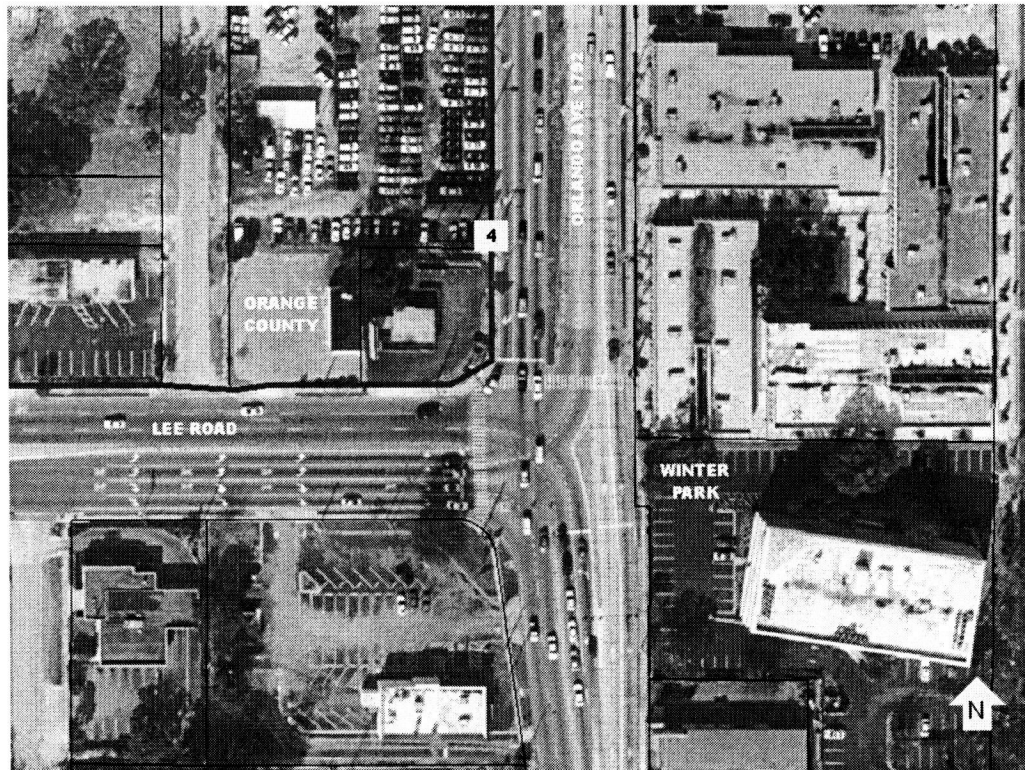


DRAFT 2



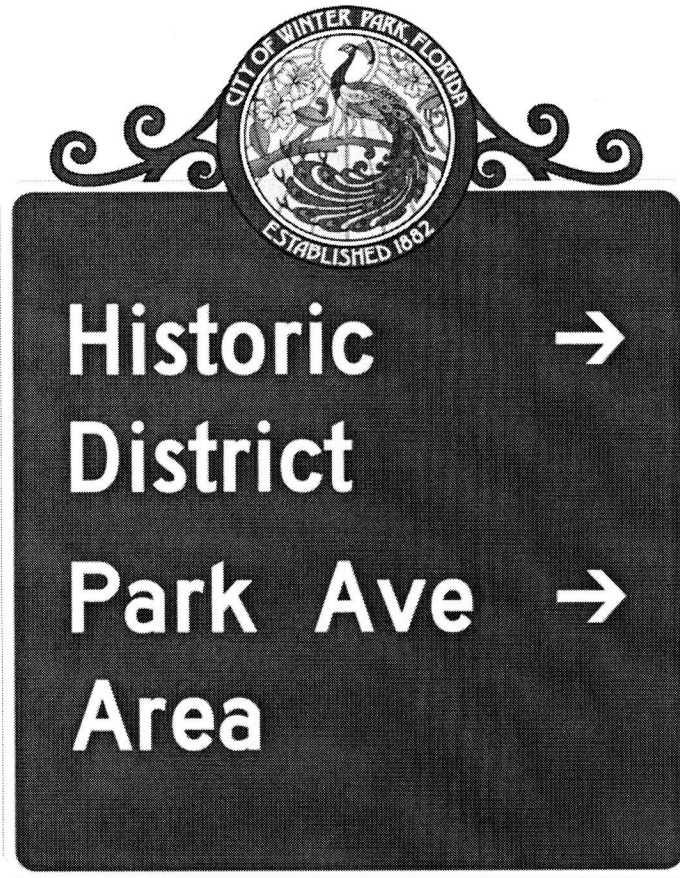
AUG
2010

City of Winter Park



Wayfinding Sign Plan

Lee Road & Highway 17-92

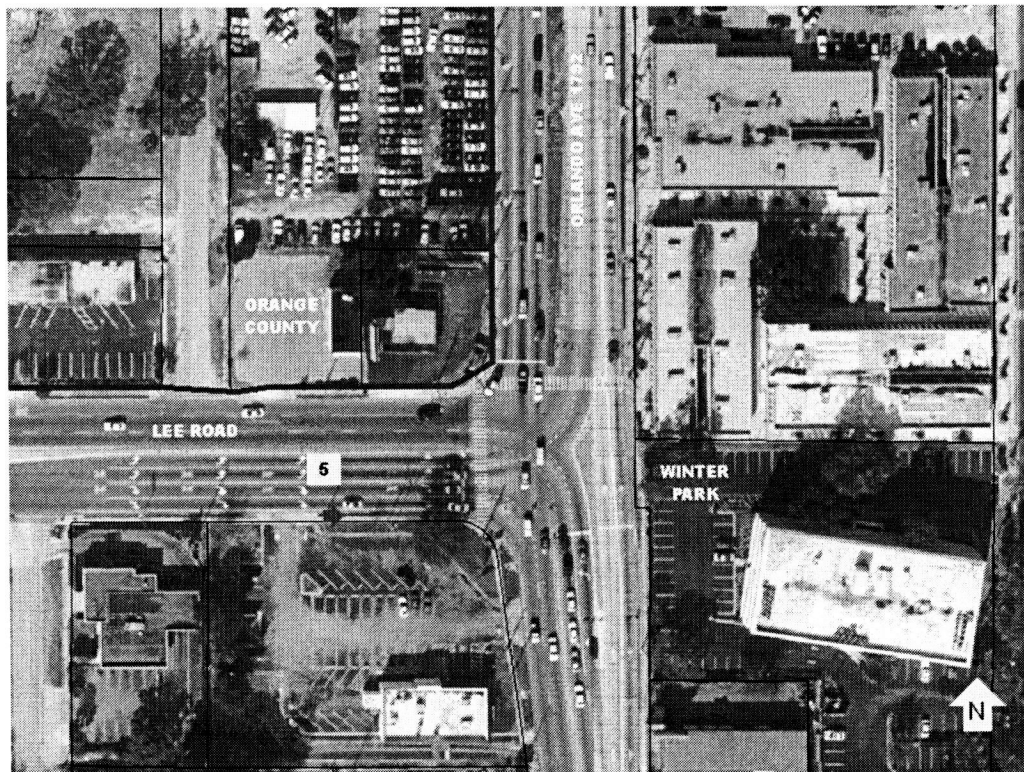


DRAFT 2



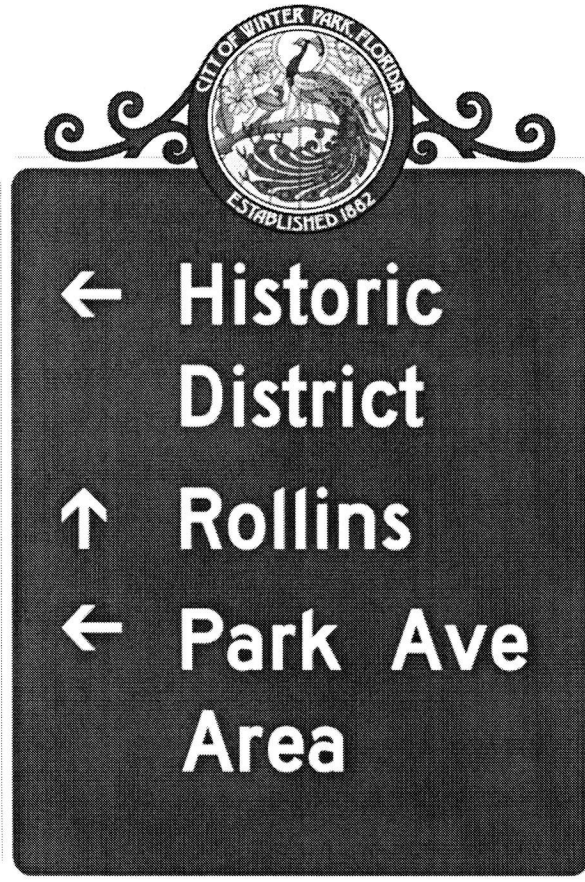
AUG
2010

City of Winter Park



Wayfinding Sign Plan

Highway 17-92 & Morse Boulevard



DRAFT 2



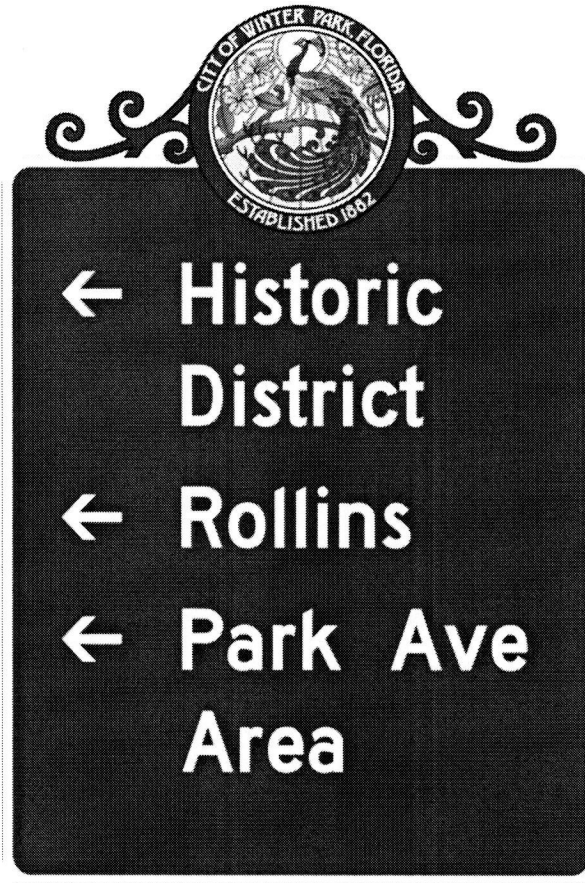
AUG
2010

City of Winter Park



Wayfinding Sign Plan

Highway 17-92 & Fairbanks Avenue

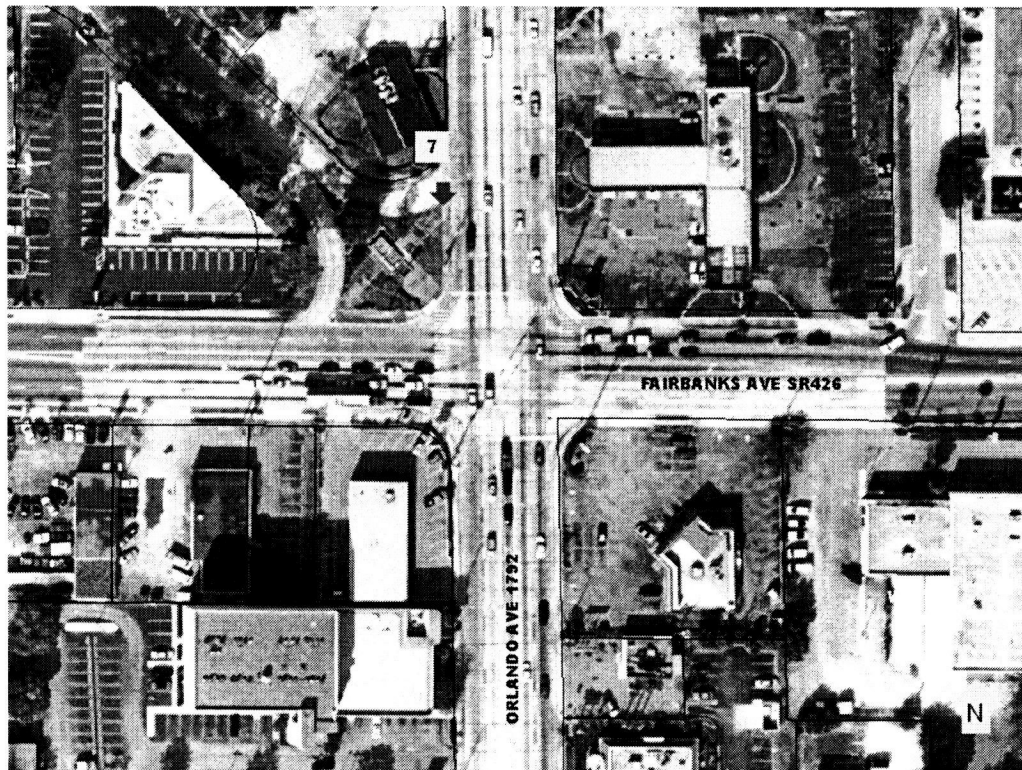


DRAFT 2



AUG
2010

City of Winter Park



Wayfinding Sign Plan

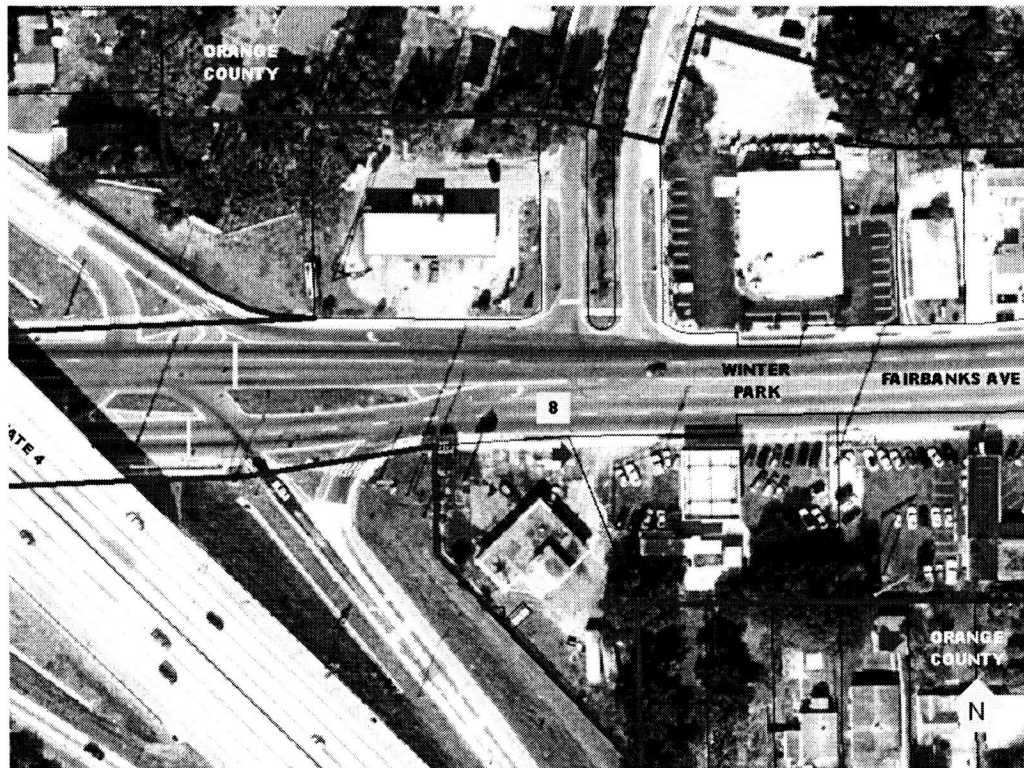
DRAFT 2



AUG
2010

City of Winter Park

Fairbanks Avenue & Interstate 4



Wayfinding Sign Plan

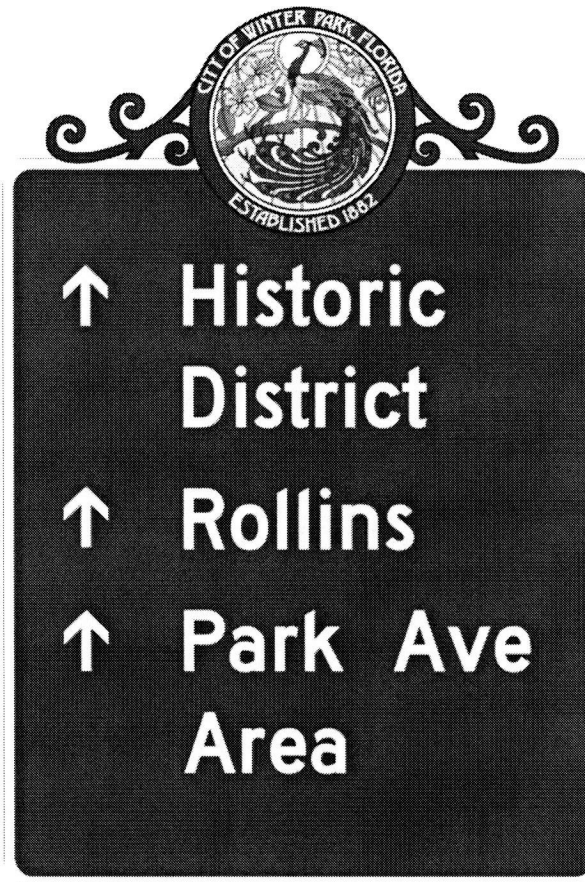
DRAFT 2



AUG
2010

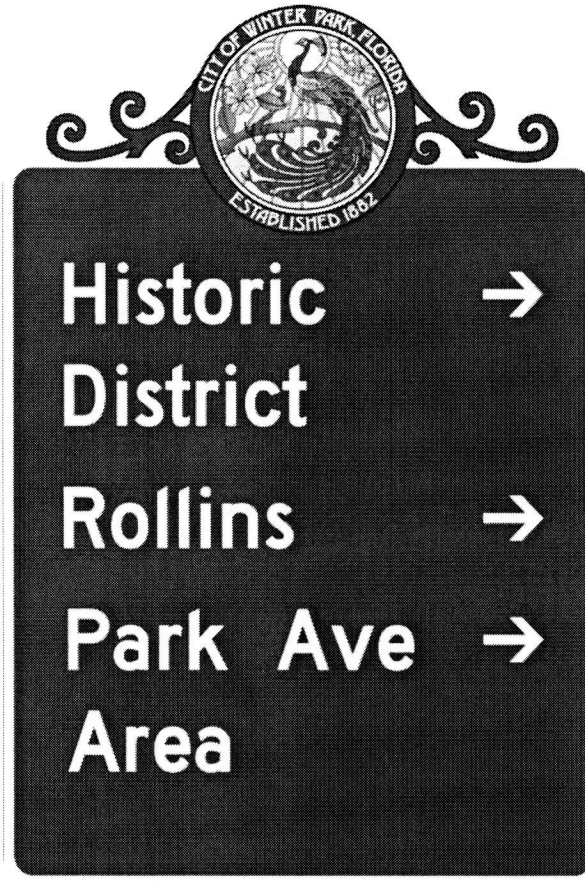
City of Winter Park

Fairbanks Avenue
(midpoint)



Wayfinding Sign Plan

Highway 17-92 & Fairbanks Avenue

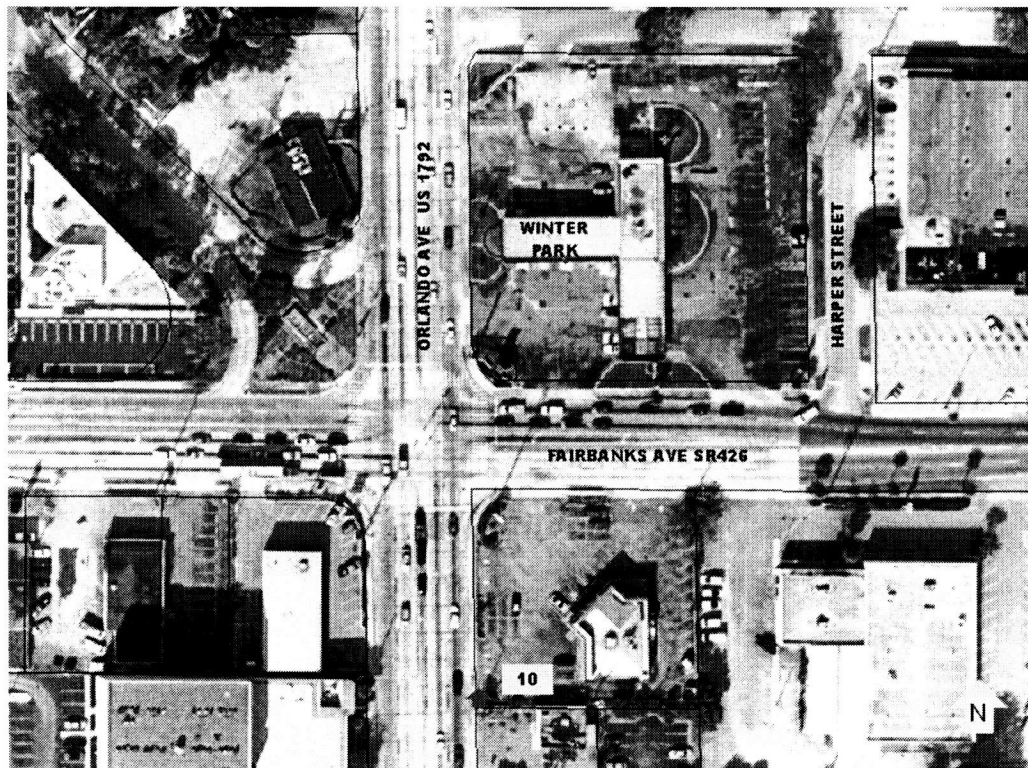


DRAFT 2



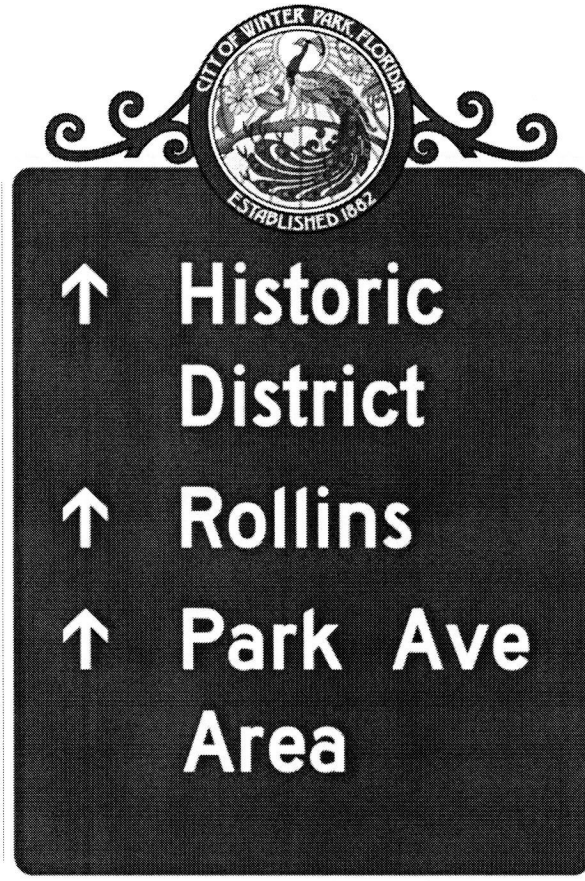
AUG
2010

City of Winter Park



Wayfinding Sign Plan

Fairbanks Avenue & Highway 17-92

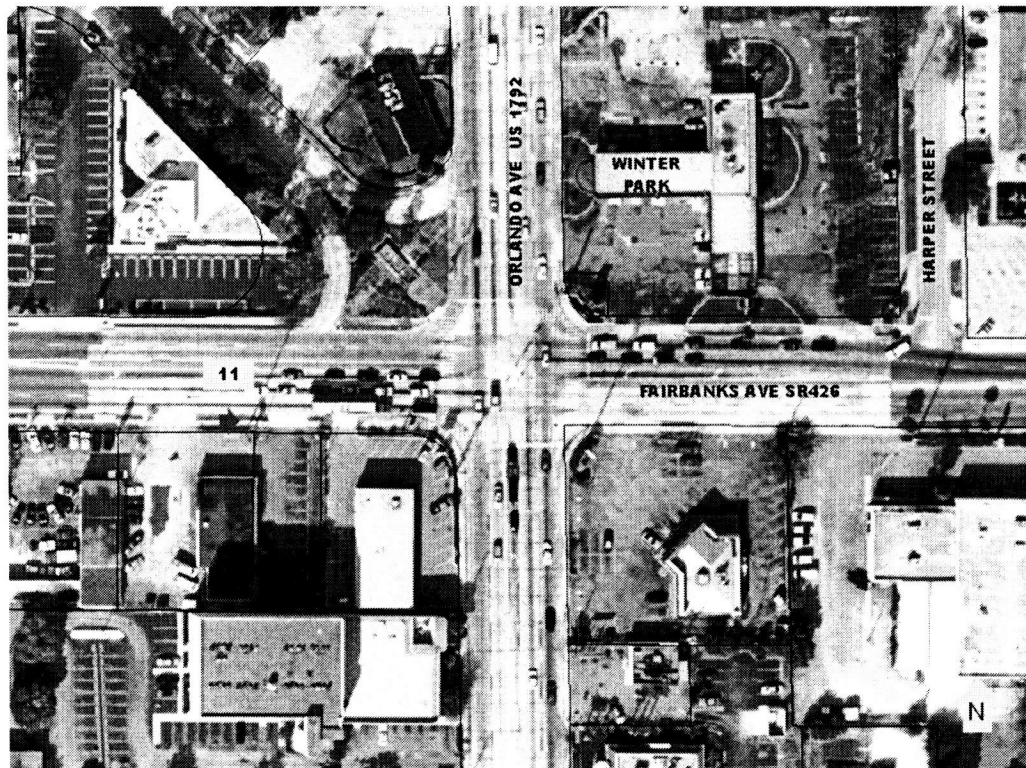


DRAFT 2



AUG
2010

City of Winter Park



DRAFT 2



AUG
2010

Highway 17-92 & Garden Drive



Wayfinding Sign Plan

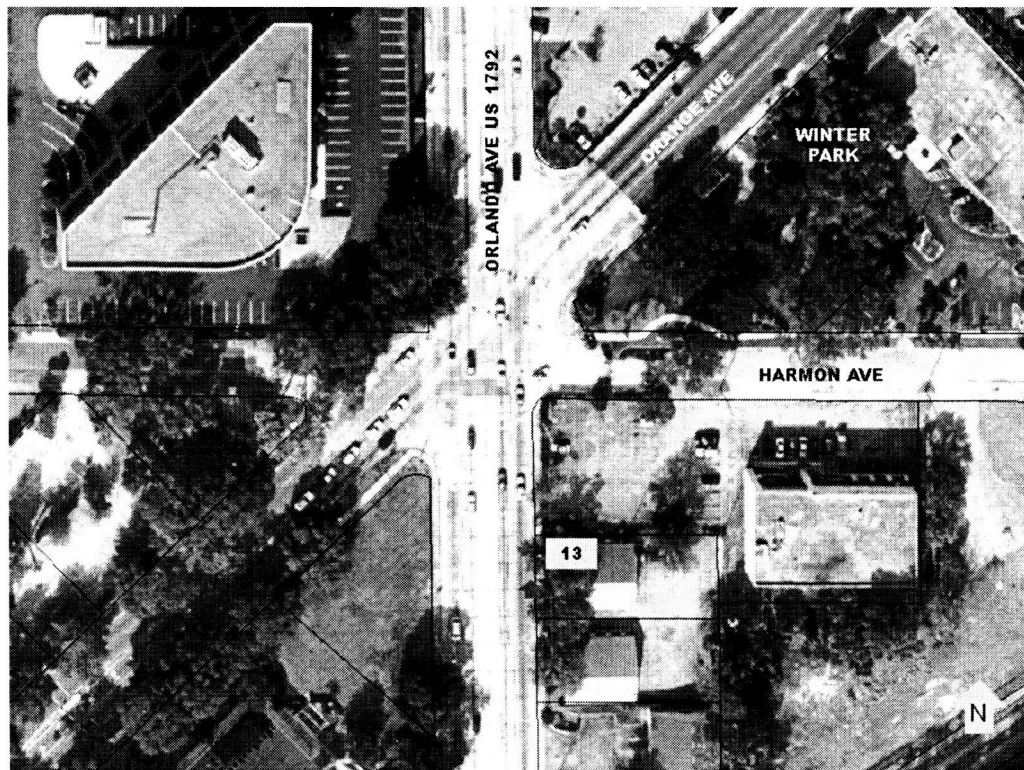
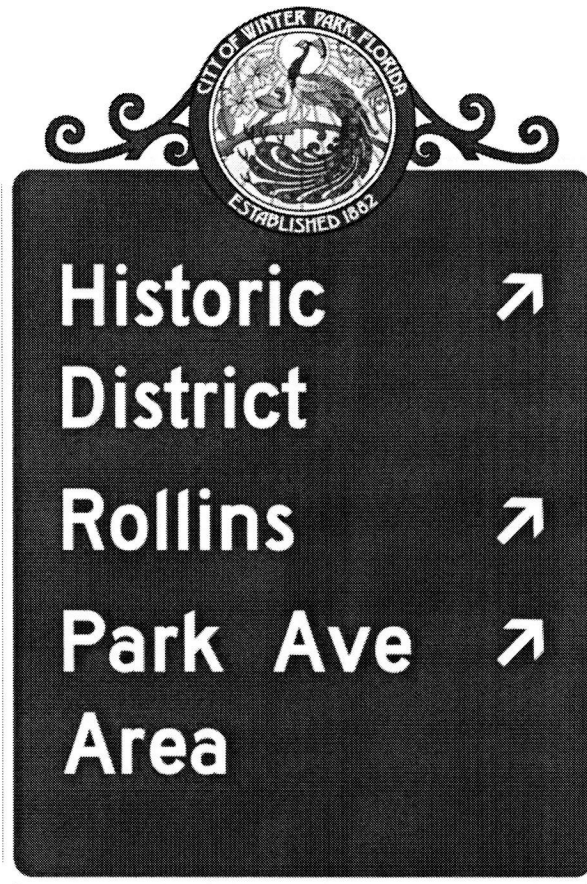
DRAFT 2



AUG
2010

City of Winter Park

Highway 17-92 & Harmon Avenue



Wayfinding Sign Plan

DRAFT 2



AUG
2010

City of Winter Park

Fairbanks & New York Avenues



Wayfinding Sign Plan

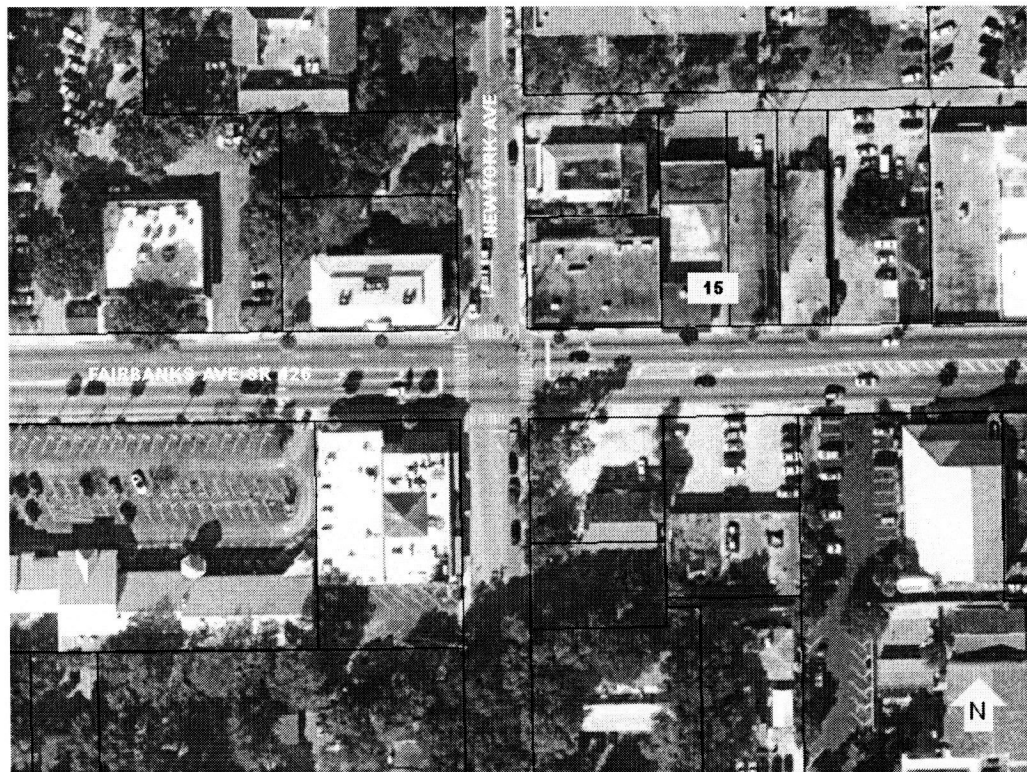
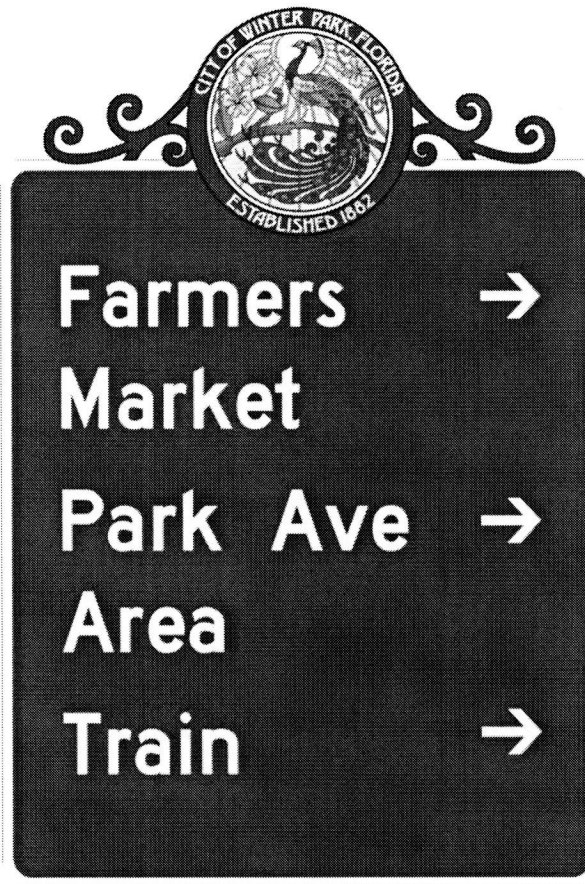
DRAFT 2

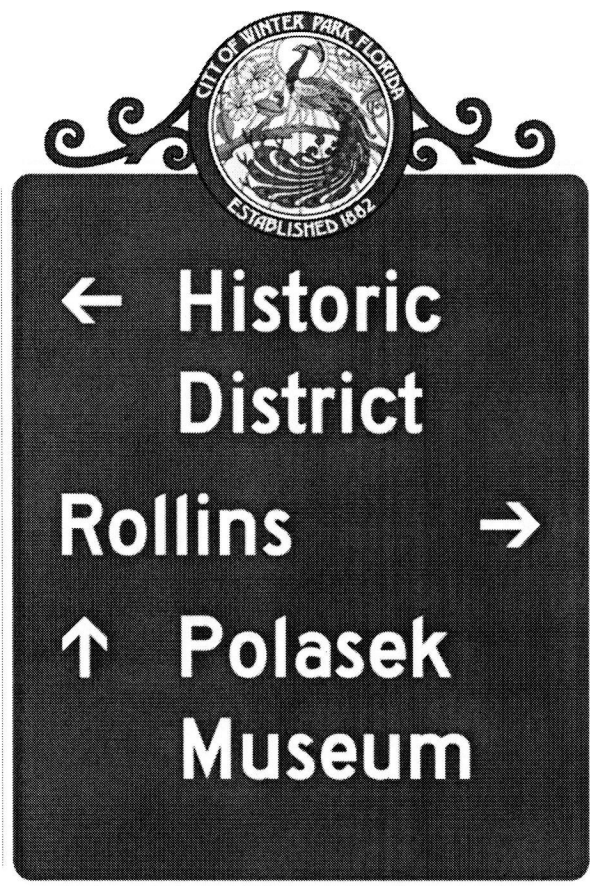


AUG
2010

City of Winter Park

Fairbanks & New York Avenues





Wayfinding Sign Plan

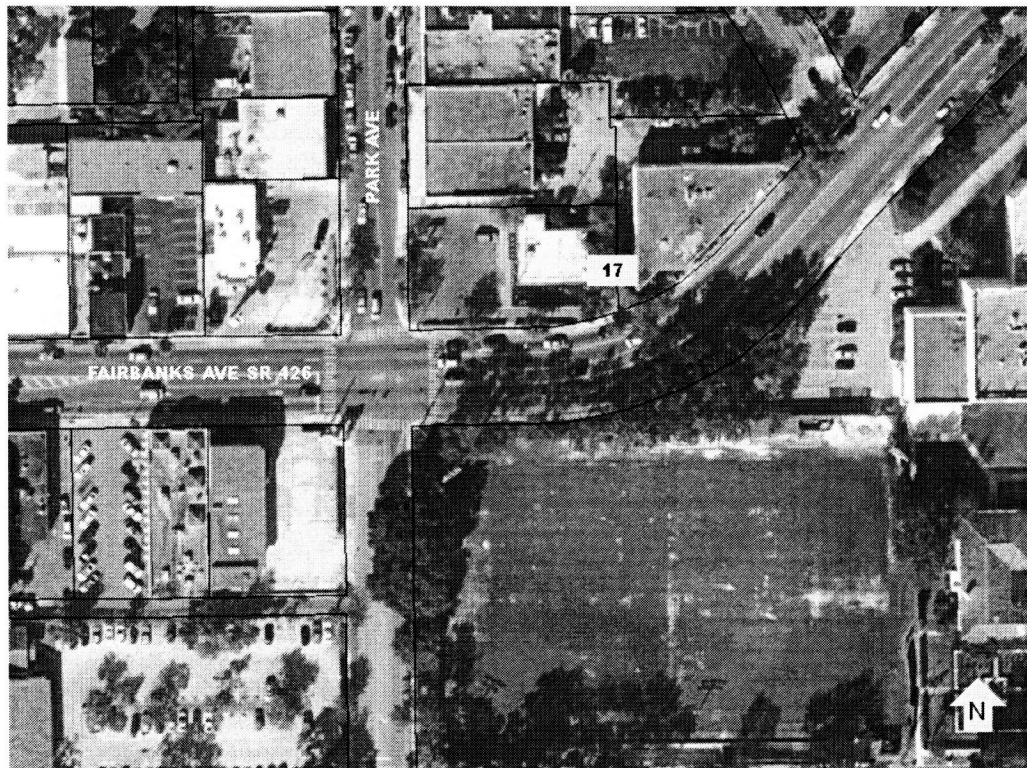
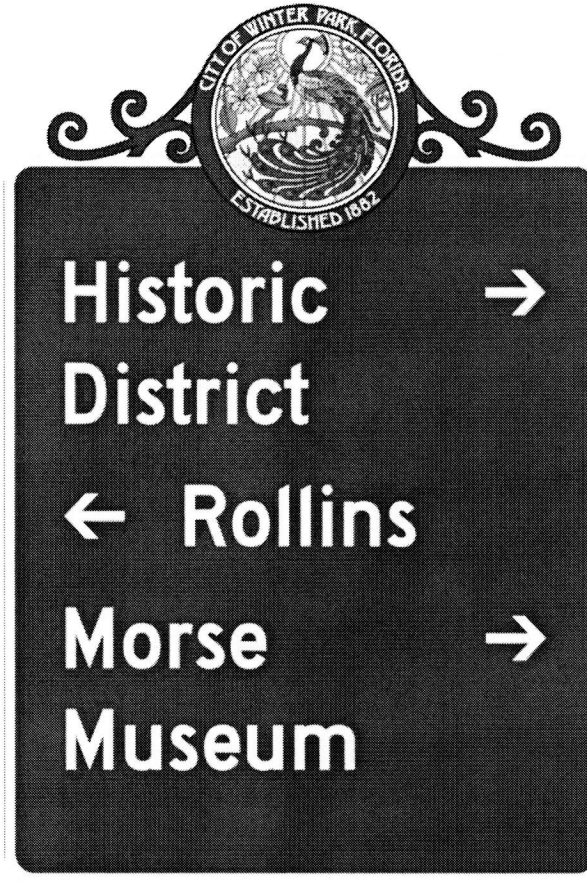
DRAFT 2



AUG
2010

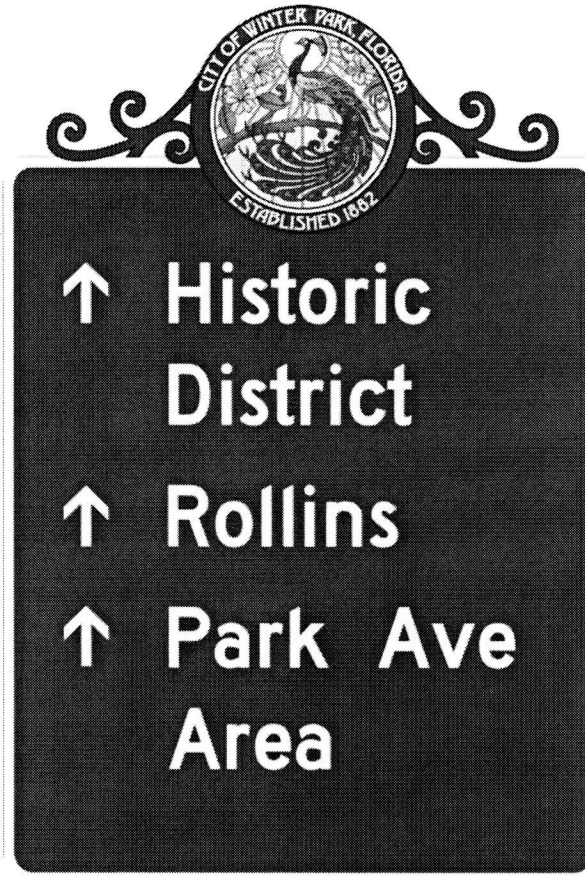
City of Winter Park

Fairbanks & Park Avenues



Wayfinding Sign Plan

Osceola Avenue
(near Polasek Museum)



DRAFT 2



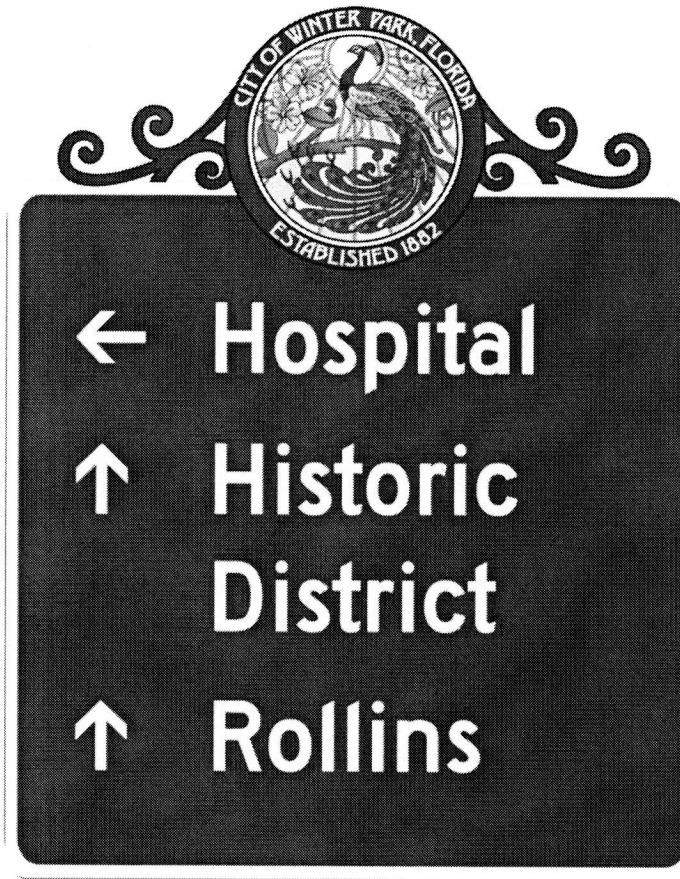
AUG
2010

City of Winter Park



Wayfinding Sign Plan

Aloma & Lakemont Avenues



DRAFT 2



AUG
2010

City of Winter Park



Wayfinding Sign Plan

DRAFT 2



AUG
2010

City of Winter Park

Aloma Avenue & Balfour Drive



Wayfinding Sign Plan

DRAFT 2



AUG
2010

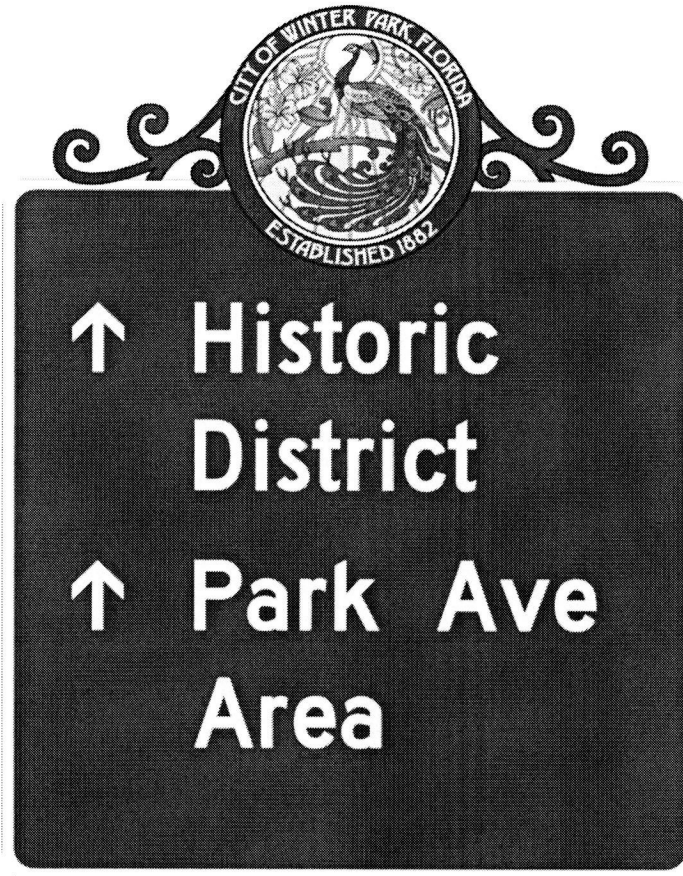
City of Winter Park

Orange & Berkshire Avenues



Wayfinding Sign Plan

Orange Avenue & Highway 17-92



DRAFT 2



AUG
2010

City of Winter Park

