

RESOLUTION NO. 2005-08

A RESOLUTION OF THE CITY COMMISSION OF THE CITY OF WINTER PARK, FLORIDA, PURSUANT TO CHAPTER 170.03, FLORIDA STATUTES, CONFIRMING THE SPECIAL ASSESSMENTS FOR THE INSTALLATION OF STREET BRICK ON TUSCANY PLACE, EAST OF VIA TUSCANY, GENERALLY DESCRIBED AS ADJACENT TO THOSE PROPERTIES ON TUSCANY PLACE, EAST OF VIA TUSCANY, PROVIDING AN EFFECTIVE DATE.

WHEREAS, the City Commission of the City of Winter Park, Florida has determined and does hereby determine, to make and fund certain public improvements and municipal services authorized by Section 170.01 and 170.201, Florida Statutes, consisting of street bricking on a portion of Tuscany Place, generally described as adjacent to those properties on Tuscany Place, east of Via Tuscany, more specifically indicated hereafter, such public improvements to be hereinafter referred to as the "Project"; and

WHEREAS, a portion of the expenses of the Project are to be defrayed by special assessments; and

WHEREAS, Section 170.07, Florida Statutes, requires that a public hearing be conducted with respect to the special assessment roll which has heretofore been filed with the City Clerk; and

WHEREAS, Section 170.08, Florida Statutes, requires that at said public hearing the City Commission of the City of Winter Park meet as an equalizing board to hear and consider any and all complaints as to such special assessments; and to adjust and equalize the said assessments when necessary on a basis of justice and right; and

WHEREAS, the City Commission of the City of Winter Park has met as such equalizing board and has heard and considered all complaints as to such special assessments raised by the owners of property to be assessed and other interested persons.

NOW, THEREFORE, be it resolved by the City Commission of the City of Winter Park, Florida as follows:

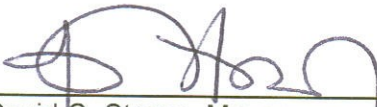
Section 1. The City Commission of the City of Winter Park, after hearing and considering all complaints brought before it as to the special assessments to be charged against property owners for the installation of and funding of capital improvements and municipal services consisting of street bricking on a portion of Tuscany Place, east of Via Tuscany, does hereby approve and confirm the special assessments as contained in the Special Assessment Rolls filed with the City Clerk of the City of Winter Park.

Section 2. By being so approved and confirmed, such assessments shall become legal, valid and binding first liens, upon the property against which such assessments are made, until paid.

Section 3. The City Clerk shall cause such approved and confirmed special assessments to be duly recorded in a special book to be known as the "improvement lien book". The record of the lien in said book shall constitute prima facie evidence of its validity.

Section 4. This Resolution shall become effective immediately upon its passage and adoption.

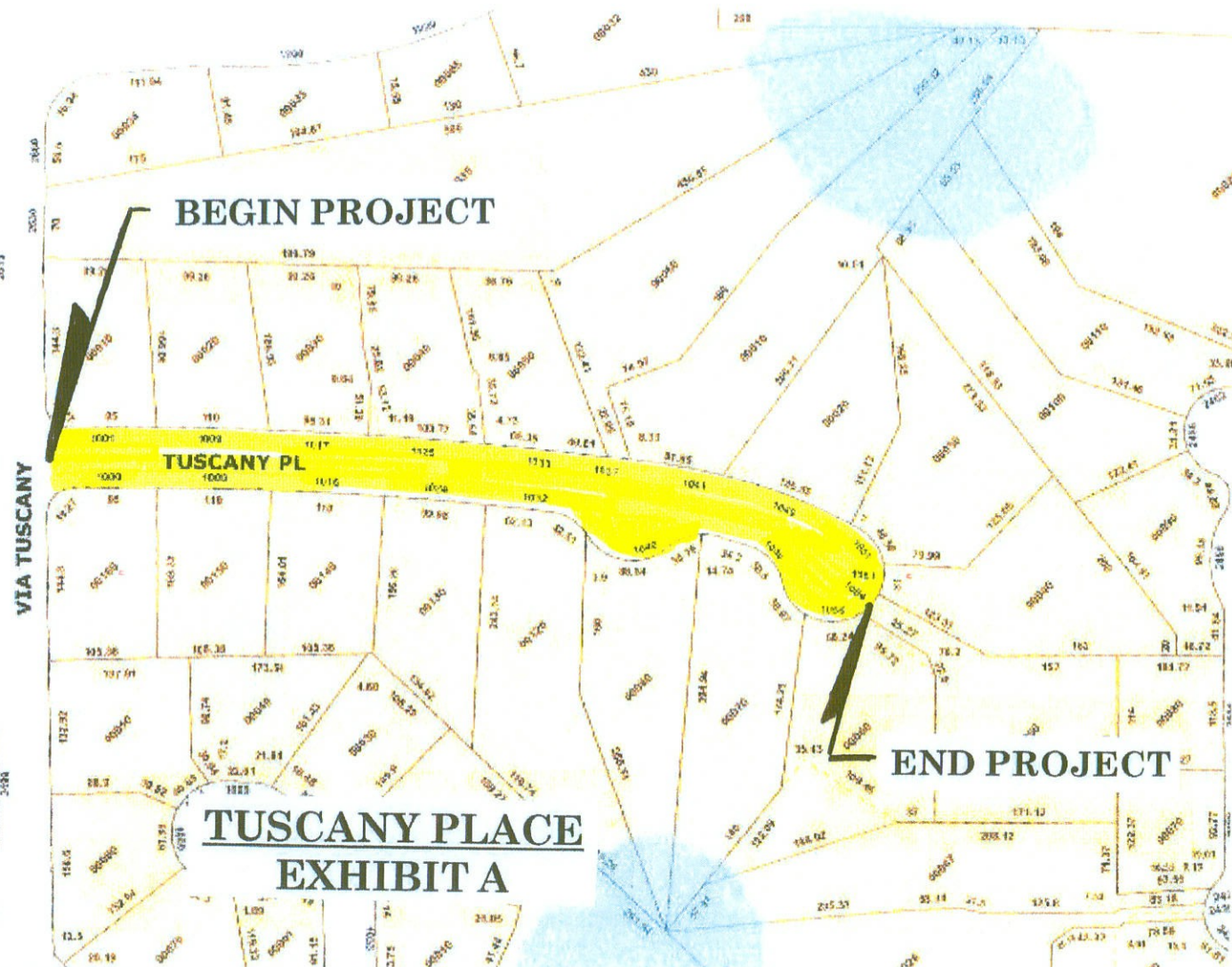
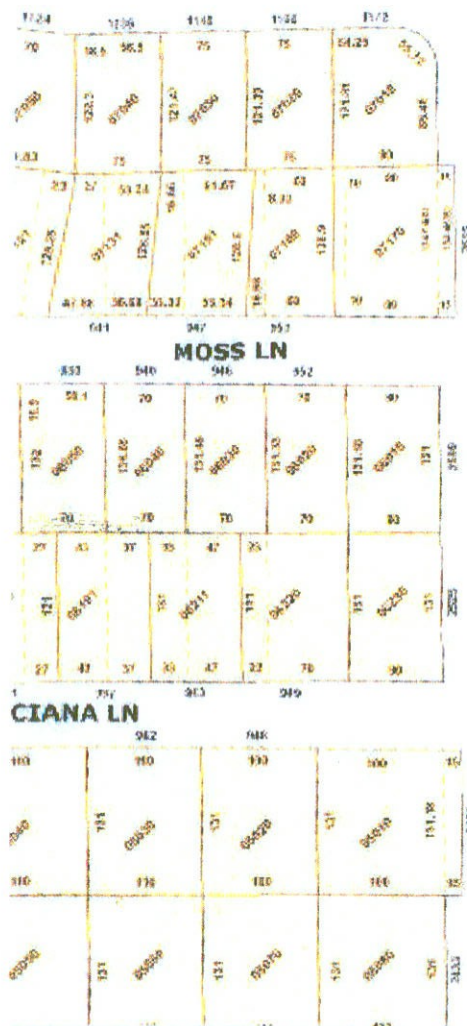
ADOPTED at a regular meeting of the City Commission of the City of Winter Park, Florida, held at City Hall, Winter Park, Florida, on the 14th day of July, 2008.



David C. Strong, Mayor

Attest: 

Cynthia S. Bonham, City Clerk



TUSCANY PLACE					
EAST, FROM VIA TUSCANY					
#	PARCEL ID	Address	CITY, STATE, ZIP	Total Per Property Owner	Annual Pymt. For 10 Yrs. @ 6% Interest
1)	32-21-30-8786-001-60	1000 TUSCANY PLACE	WINTER PARK FL 32789	\$6,962.31	(\$892.41)
2)	32-21-30-8786-000-10	1001 TUSCANY PLACE	WINTER PARK FL 32789	\$6,962.31	(\$892.41)
3)	32-21-30-8786-001-50	1008 TUSCANY PLACE	WINTER PARK FL 32789	\$6,962.31	(\$892.41)
4)	32-21-30-8786-000-20	1009 TUSCANY PLACE	WINTER PARK FL 32789	\$6,962.31	(\$892.41)
5)	32-21-30-8786-001-40	1016 TUSCANY PLACE	WINTER PARK FL 32789	\$6,962.31	(\$892.41)
6)	32-21-30-8786-000-30	1017 TUSCANY PLACE	WINTER PARK FL 32789	\$6,962.31	(\$892.41)
7)	32-21-30-8786-001-30	1024 TUSCANY PLACE	WINTER PARK FL 32789	\$6,962.31	(\$892.41)
8)	32-21-30-8786-000-40	1025 TUSCANY PLACE	WINTER PARK FL 32789	\$6,962.31	(\$892.41)
9)	32-21-30-8786-001-20	1032 TUSCANY PLACE	WINTER PARK FL 32789	\$6,962.31	(\$892.41)
10)	32-21-30-8786-000-50	1033 TUSCANY PLACE	WINTER PARK FL 32789	\$6,962.31	(\$892.41)
11)	32-21-30-8786-000-60	1037 TUSCANY PLACE	WINTER PARK FL 32789	\$6,962.31	(\$892.41)
12)	32-21-30-8787-000-80	1040 TUSCANY PLACE	WINTER PARK FL 32789	\$6,962.31	(\$892.41)
13)	32-21-30-8787-000-10	1041 TUSCANY PLACE	WINTER PARK FL 32789	\$6,962.31	(\$892.41)
14)	32-21-30-8787-000-70	1048 TUSCANY PLACE	WINTER PARK FL 32789	\$6,962.31	(\$892.41)
15)	32-21-30-8787-000-20	1049 TUSCANY PLACE	WINTER PARK FL 32789	\$6,962.31	(\$892.41)
16)	32-21-30-8787-000-30	1055 TUSCANY PLACE	WINTER PARK FL 32789	\$6,962.31	(\$892.41)
17)	32-21-30-8787-000-60	1056 TUSCANY PLACE	WINTER PARK FL 32789	\$6,962.31	(\$892.41)
18)	32-21-30-8787-000-40	1061 TUSCANY PLACE	WINTER PARK FL 32789	\$6,962.31	(\$892.41)
19)	32-21-30-8787-000-50	1064 TUSCANY PLACE	WINTER PARK FL 32789	\$6,962.31	(\$892.41)